

Parts Manual

# RV602

Collection Vacuum





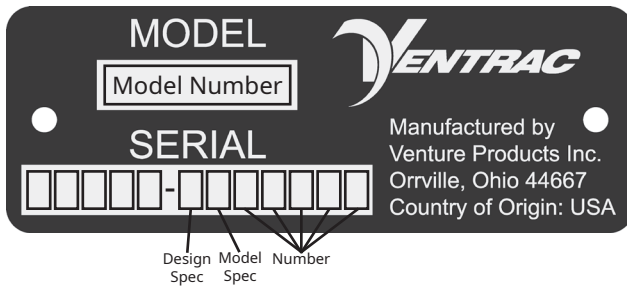
500 Venture Drive  
Orrville Oh 44667  
www.ventrac.com

View all manuals



Visit [ventrac.com/manuals](http://ventrac.com/manuals) for the latest version of this parts manual. A downloadable operator's manual is also available.

### Serial Number Description



### Notes

- If any component requires replacement, use only original Ventrac replacement parts.
- When ordering new components, be sure to order all required safety decals. All current safety decals must be affixed to the replacement components prior to installation of the component.

# TABLE OF CONTENTS

---

<b>PARTS</b>	<b>PAGE 5</b>
Electrical Diagram .....	5
Collection Bin - Front Panel .....	6
Collection Bin - Left Panel & Brace .....	8
Collection Bin - Right Panel & Brace.....	10
Collection Bin - Floor Panel & Front Window .....	12
Collection Bin - Door & Latch (Serial # 01001 - 01369) .....	14
Collection Bin - Door & Latch (Serial # 01370 -) .....	16
Collection Bin Door Hydraulics.....	18
Main Frame & Collection Bin Lift Arm Frame .....	20
Collection Bin Lift Hydraulics.....	22
Tractor Mount (Hitch and Roll Bar) .....	24
Engine & Guard.....	26
Engine Controls & Electrical Components .....	28
Battery Cable Connector .....	30
Fan Housing, Fan, & Upper Chute.....	32
Vacuum Hose & Support Arm .....	34
Storage Stands with Casters.....	36
70.8090 HM602 Vacuum Boot .....	38
70.8091 HM/HP722 Vacuum Boot .....	40
70.8092 Docking Station Base.....	42
70.8092 Docking Station Latch .....	44
70.8169 MS/MT Vacuum Boot .....	46
70.8210 Vacuum Boot MS/MT Mowers.....	48



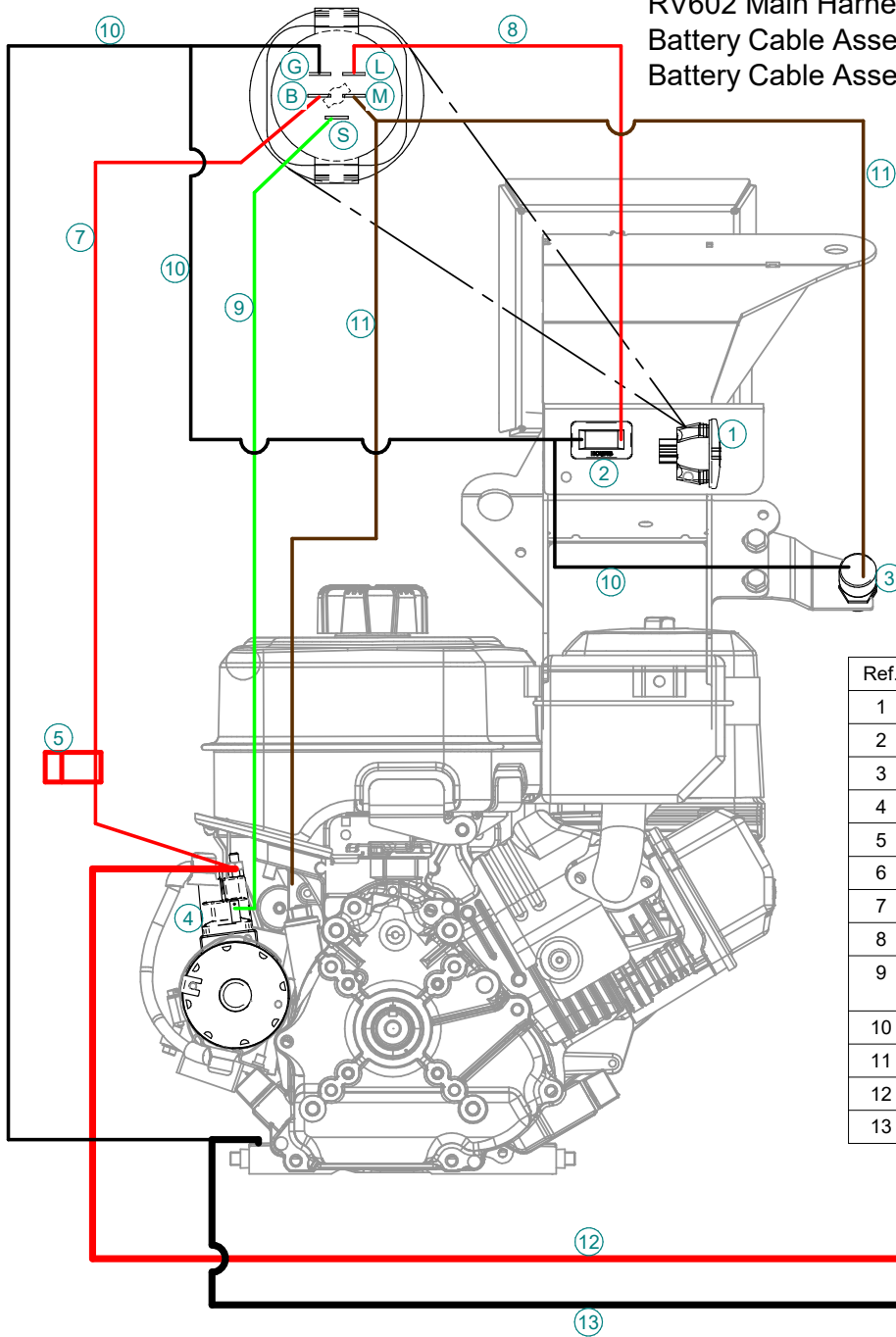
# PARTS

## Electrical Diagram

RV602 Main Harness - 32.0096

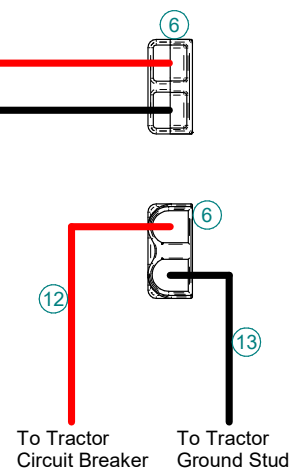
Battery Cable Assembly Vac/Tractor - 32.0094

Battery Cable Assembly Vac/Engine - 32.0095



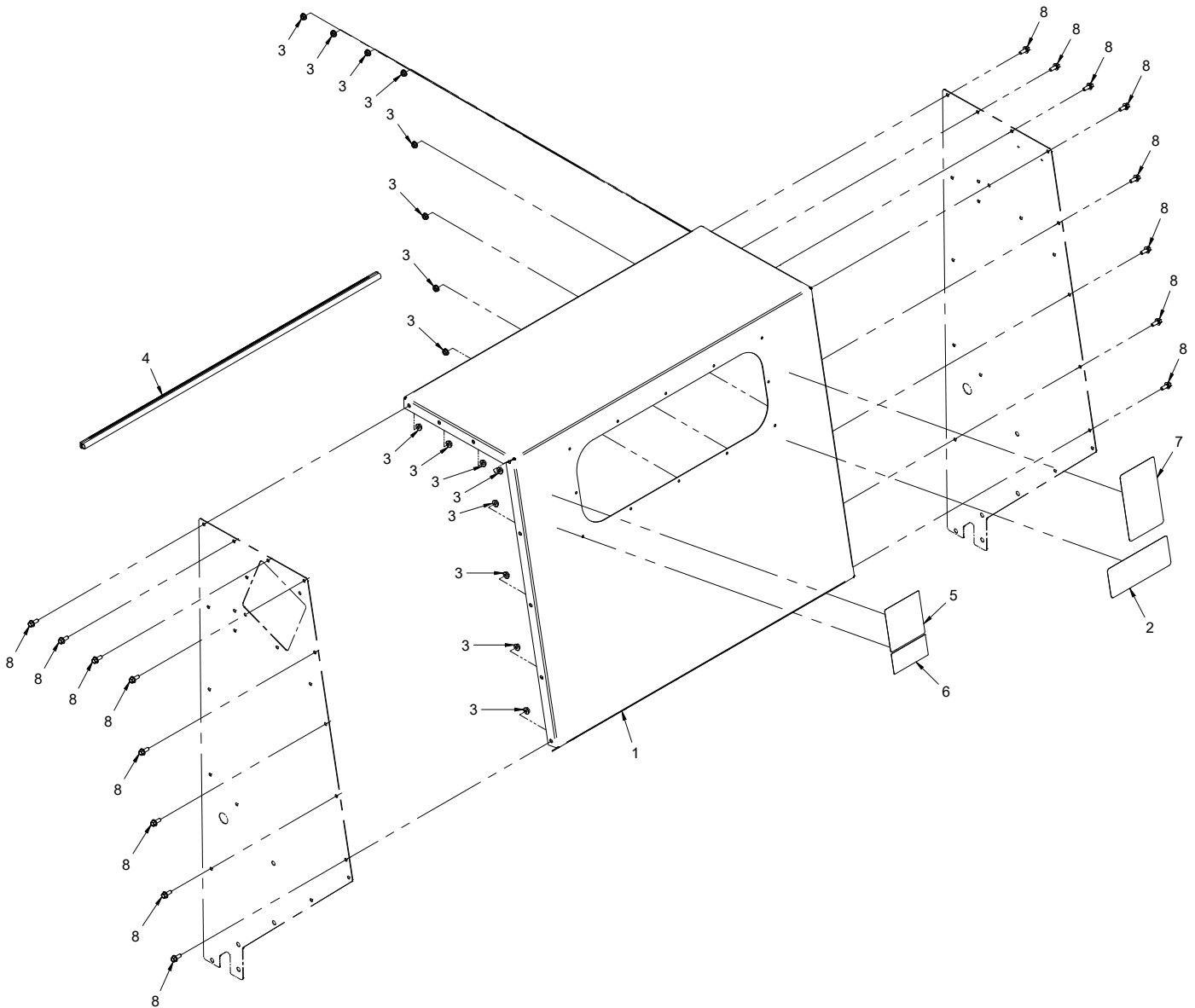
Ref.	Description
1	Ignition Switch
2	Hour Meter
3	Shut-Off Switch
4	Engine Solenoid
5	20 Amp Fuse
6	Battery Cable Connector
7	12 Ga Red Wire - Supply
8	18 Ga Red Wire
9	14 Ga Green Wire W/Yellow Stripe - Solenoid Trigger
10	14 Ga Black Wire - Ground
11	14 Ga Brown Wire - Ignition Shut-Off
12	Positive Battery Cable - Red
13	Negative Battery Cable - Black

Refer to the **Engine Controls & Electrical Components** and **Battery Cable Connector** pages for part numbers and locations.



# PARTS

## ILLUSTRATED DRAWING Collection Bin - Front Panel



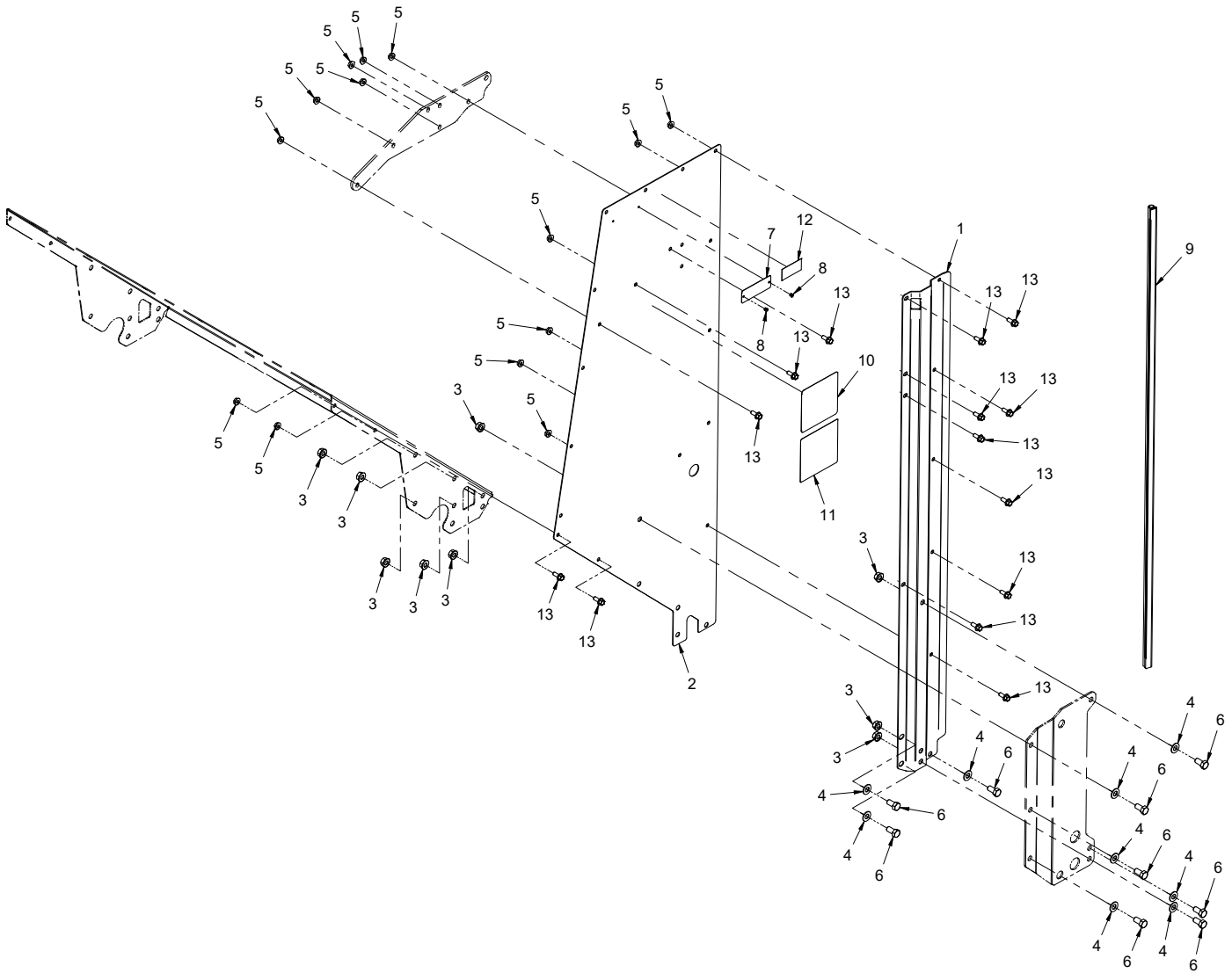
# PARTS

## Collection Bin - Front Panel

REF.	PART NO.	DESCRIPTION	QTY.
1	60.1011	PANEL, COLLECTION BIN TOP/FRONT	1
2	00.0350	DECAL, MAINTENANCE RV602	1
3	99.SF04	NUT, SRF 1/4-20 USS	16
4	06.0049-35IN	TRIM, 7/16" BULB SEAL SIDE 1/16T X 35"	1
5	00.0103	DECAL, HAZARD - HIGH PRESS. FLUID (Serial # 01001-01919)	1
5	00.0621	DECAL, HIGH PRESSURE FLUID HAZARD (Serial # 01920-)	1
6	00.0220	DECAL, GENERAL SAFETY (Serial # 01001-01919)	1
6	00.0632	DECAL, MOVING PARTS HAZARD (Serial # 01920-)	1
7	00.0269	DECAL, COLLECTION SYSTEM RV600 (Serial # 01001-01919)	1
7	00.0747	DECAL, COLLECTION SYSTEM RV602 (Serial # 01920-)	1
8	99.SF0405-1	BOLT, SMF 1/4-20 X 5/8	16

# PARTS

## ILLUSTRATED DRAWING Collection Bin - Left Panel & Brace





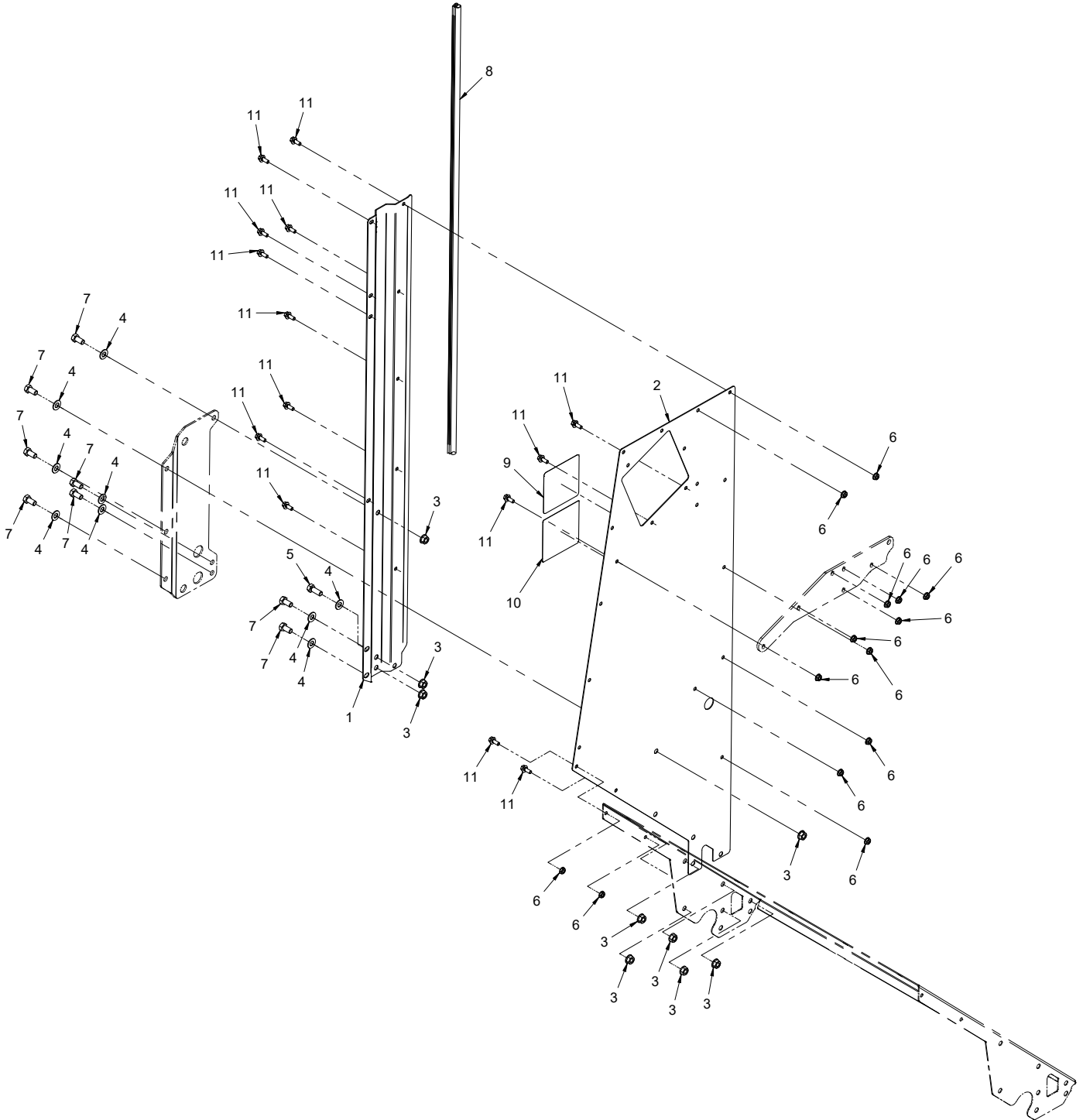
# PARTS

## Collection Bin - Left Panel & Brace

REF.	PART NO.	DESCRIPTION	QTY.
1	64.1351	.BRACE, BIN OUTER LEFT	1
2	60.1010	.PANEL, COLLECTION BIN LEFT	1
3	99.SF06	.NUT, SRF 3/8-16 USS	9
4	95.06	.WASHER, FLAT 3/8 SAE	9
5	99.SF04	.NUT, SRF 1/4-20 USS	14
6	90.0606	.BOLT, 3/8-16 USS X 3/4	9
7	00.0128	.PLATE, VENTRAC SERIAL NUMBER	1
8	04.0007	.RIVET, POP DOME 1/8 X 1/8 S.S.	2
9	06.0049-42IN	.TRIM, 7/16" BULB SEAL SIDE 1/16T X 42"	1
10	00.0267	.DECAL, DANGER RV600 (Serial # 01001-01919)	1
10	00.0748	.DECAL, BIN SAFETY (Serial # 01920-)	1
11	00.0102	.DECAL, DANGER - PINCHING HAZARDS (Serial # 01001-01919)	1
11	00.0620	.DECAL, PINCHING OR CRUSHING HAZARD (Serial # 01920-)	1
12	00.0100	.DECAL, MADE IN USA	1
13	99.SF0405-1	.BOLT, SMF 1/4-20 X 5/8	14

# PARTS

## ILLUSTRATED DRAWING Collection Bin - Right Panel & Brace



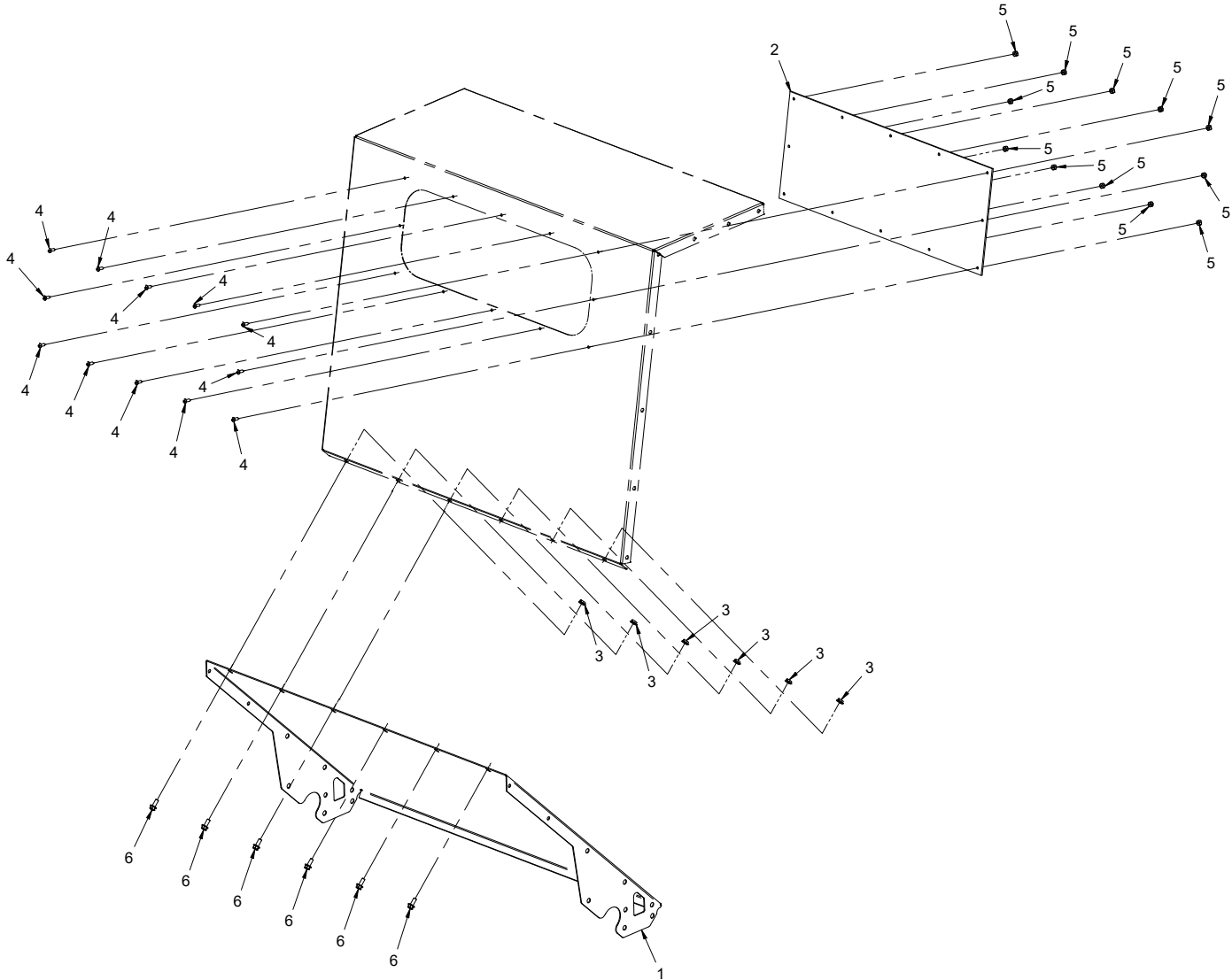
# PARTS

## Collection Bin - Right Panel & Brace

REF.	PART NO.	DESCRIPTION	QTY.
1	64.1350	.BRACKET, BIN OUTER RIGHT.	1
2	60.1009	.PANEL, COLLECTION BIN RIGHT.	1
3	99.SF06	.NUT, SRF 3/8-16 USS.	9
4	95.06	.WASHER, FLAT 3/8 SAE	9
5	90.0608	.BOLT, 3/8-16 USS X 1.	1
6	99.SF04	.NUT, SRF 1/4-20 USS.	14
7	90.0606	.BOLT, 3/8-16 USS X 3/4	8
8	06.0049-42IN	.TRIM, 7/16" BULB SEAL SIDE 1/16T X 42"	1
9	00.0267	.DECAL, DANGER RV600 (Serial # 01001-01919).	1
9	00.0748	.DECAL, BIN SAFETY (Serial # 01920-).	1
10	00.0102	.DECAL, DANGER - PINCHING HAZARDS (Serial # 01001-01919)	1
10	00.0620	.DECAL, PINCHING OR CRUSHING HAZARD (Serial # 01920-)	1
11	99.SF0405-1	.BOLT, SMF 1/4-20 X 5/8	14

# PARTS

## ILLUSTRATED DRAWING Collection Bin - Floor Panel & Front Window



# PARTS

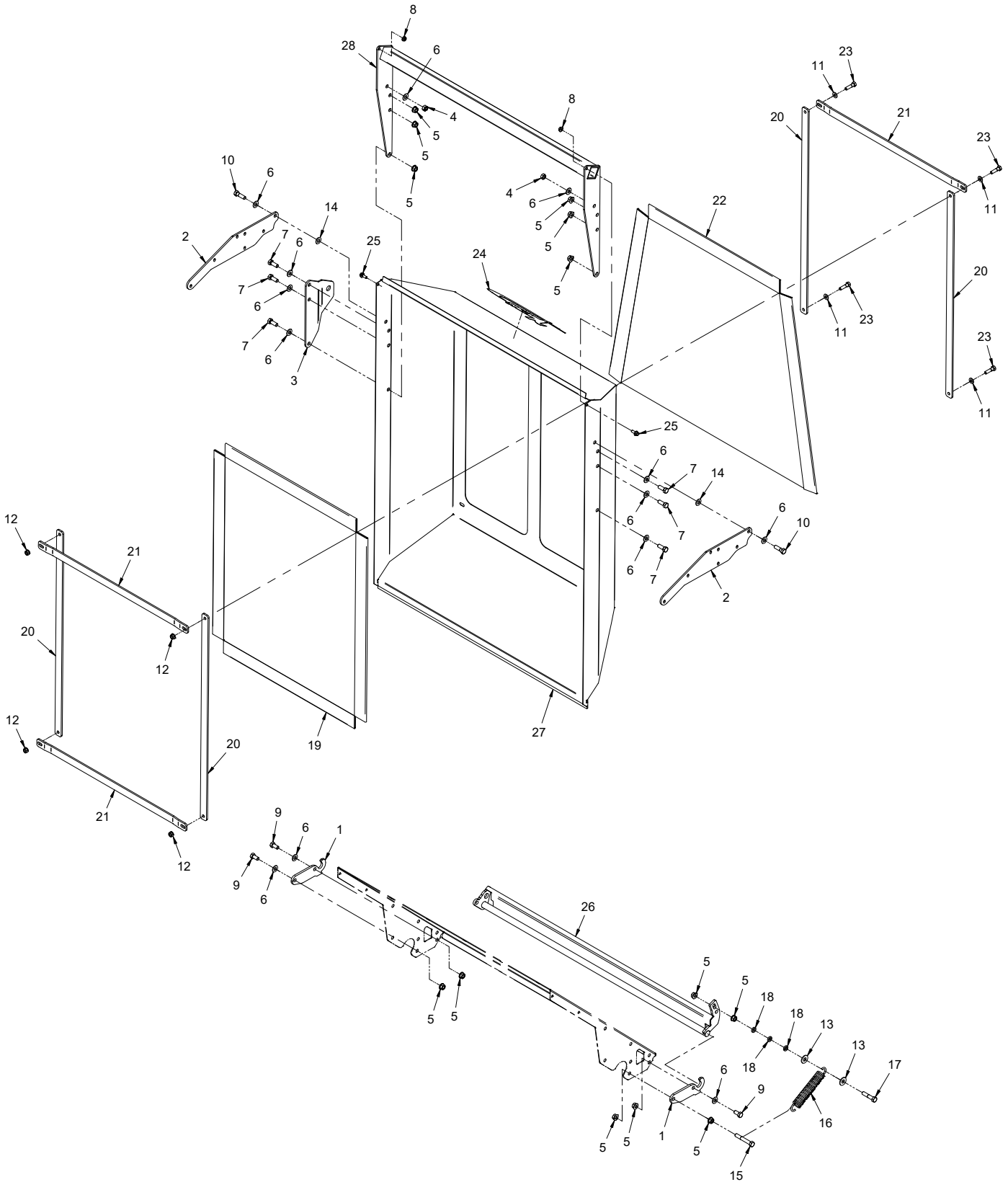
## Collection Bin - Floor Panel & Front Window

REF.	PART NO.	DESCRIPTION	QTY.
1	60.1014	PANEL, COLLECTION BIN FLOOR	1
2	44.0255	WINDOW, COLLECTION BIN	1
3	99.SF04	NUT, SRF 1/4-20 USS.	6
4	99.K0062	MACHINE SCREW, #10-32 X 1/2.	12
5	99.A1032N	LOCKNUT, NYLON 10-32 STAINLESS.	12
6	99.SF0405-1	BOLT, SMF 1/4-20 X 5/8	6

# PARTS

## ILLUSTRATED DRAWING

### Collection Bin - Door & Latch (Serial # 01001 - 01369)



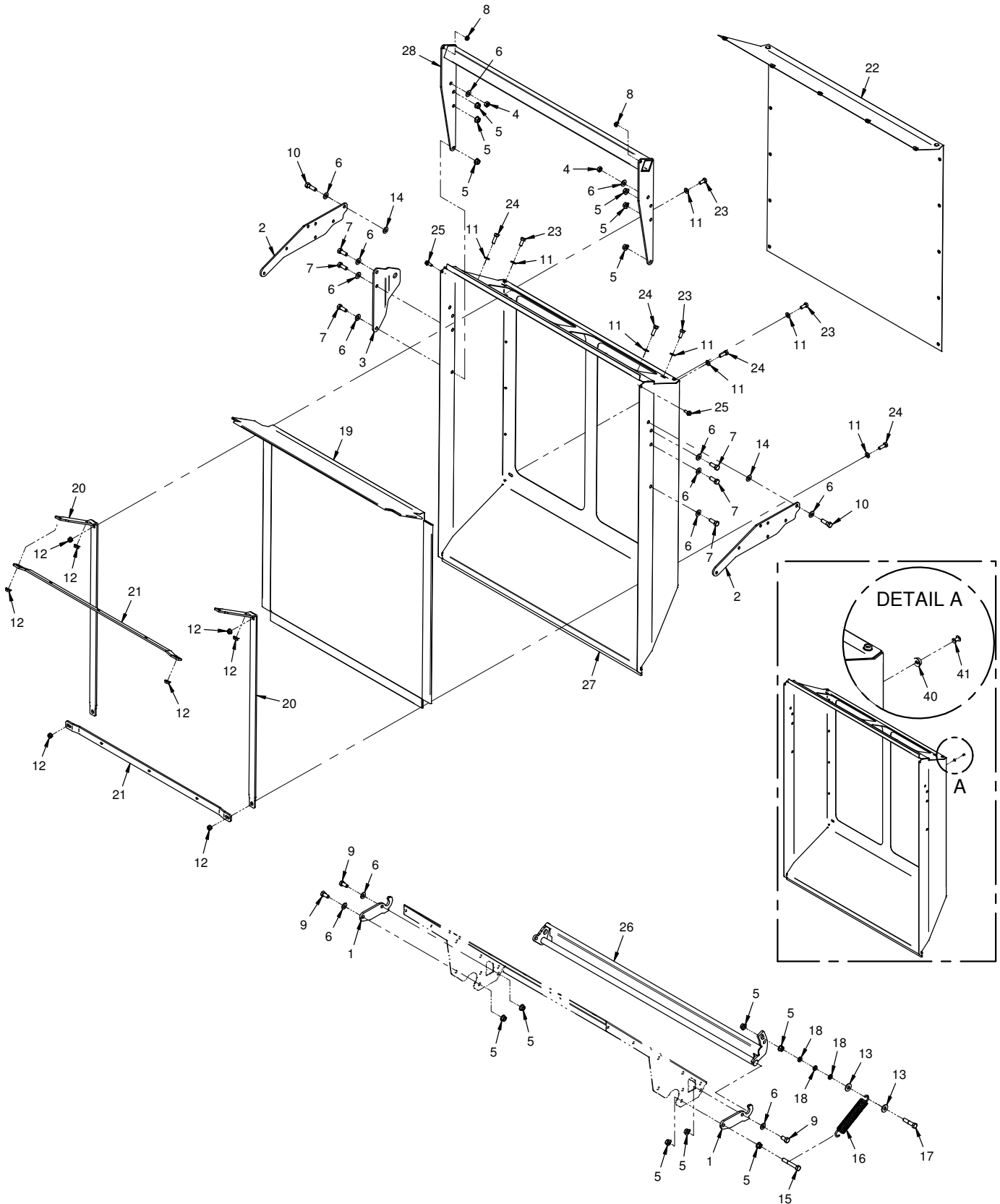
# PARTS

## Collection Bin - Door & Latch (Serial # 01001 - 01369)

REF.	PART NO.	DESCRIPTION	QTY.
1	64.1346	.HINGE, LATCH RETAINER	2
2	64.1347	.MOUNT, COLLECTION BIN DOOR	2
3	64.1358	.MOUNT, DOOR CYLINDER	1
4	99.A06	.LOCKNUT, STOVER 3/8-16 USS	2
5	99.SF06	.NUT, SRF 3/8-16 USS	13
6	95.06	.WASHER, FLAT 3/8 SAE	13
7	90.0608	.BOLT, 3/8-16 USS X 1	6
8	99.SF04	.NUT, SF 1/4-20 USS	2
9	90.0606	.BOLT, 3/8-16 USS X 3/4	3
10	90.0610	.BOLT, 3/8-16 USS X 1-1/4	2
11	95.05	.WASHER, FLAT 5/16 SAE	4
12	99.SF05	.NUT, SRF 5/16-18 USS	4
13	94.06	.WASHER, FLAT 3/8 USS	2
14	05.0083	.WASHER, PVC .375ID X .875 X .0625	2
15	90.0620	.BOLT, 3/8-16 USS X 2-1/2	1
16	41.0048	.SPRING, EXT. 1 OD X 6	1
17	90.0614	.BOLT, 3/8-16 USS X 1-3/4	1
18	05.0119	.WASHER, NYLON	3
19	44.0253	.SCREEN, COLLECTION OUTLET	1
20	64.1348	.CLAMP, SIDE CURTAIN	4
21	64.1349	.CLAMP, TOP CURTAIN	3
22	44.0252	.CANVAS, COLLECTION OUTLET	1
23	90.0510	.BOLT, 5/16-18 USS X 1-1/4"	4
24	00.0189	.DECAL, VENTRAC ORBITAL	1
25	99.SF0405-1	.BOLT, SMF 1/4-20 X 5/8	2
26	64.1345	.LATCH, BIN DOOR RV	1
27	60.1012	.DOOR, COLLECTION BIN	1
28	62.1278	.FRAME, COLLECTION DOOR	1

# PARTS

## ILLUSTRATED DRAWING Collection Bin - Door & Latch (Serial # 01370 -)





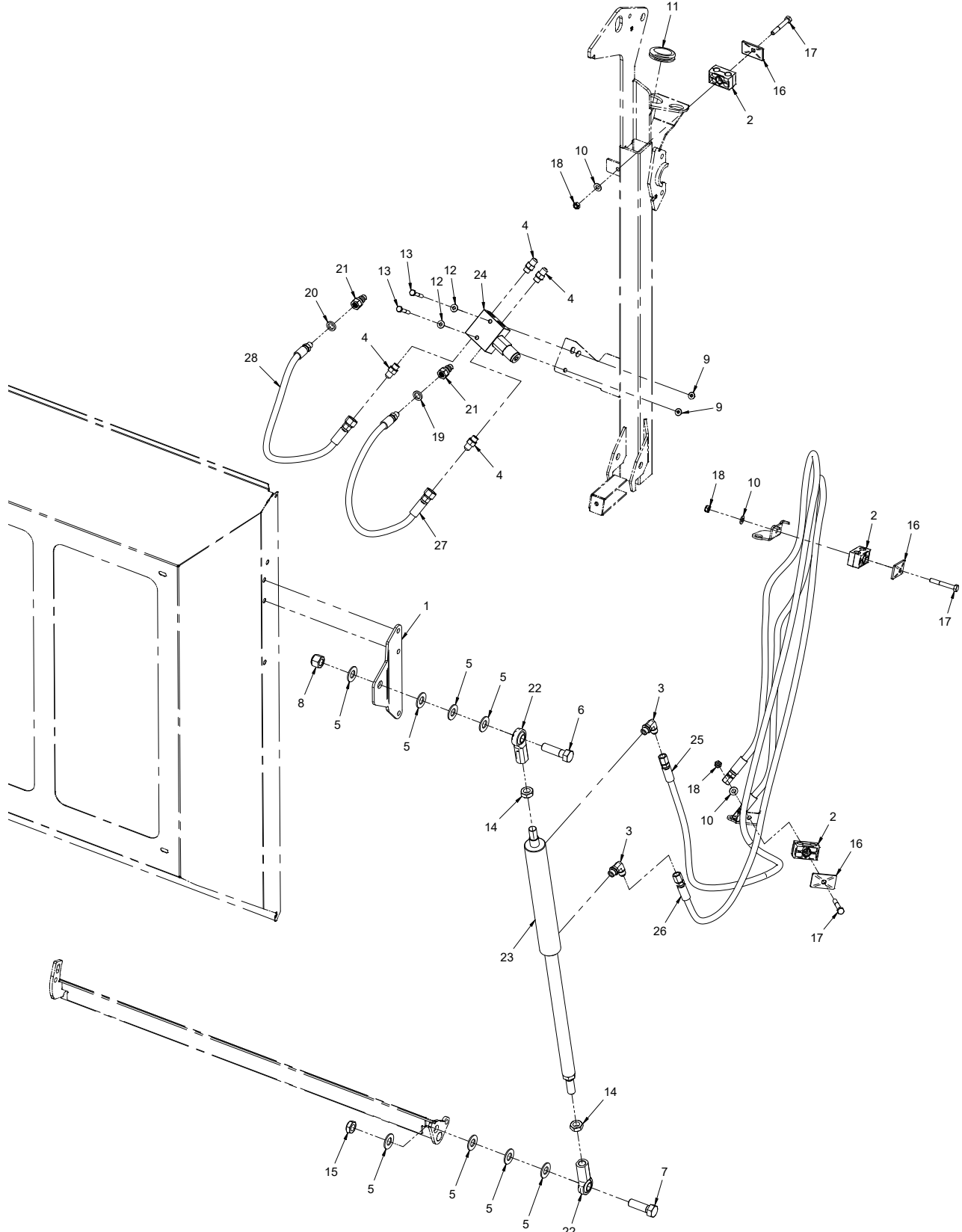
# PARTS

## Collection Bin - Door & Latch (Serial # 01370 -)

REF.	PART NO.	DESCRIPTION	QTY.
1	64.1346	.HINGE, LATCH RETAINER	2
2	64.1347	.MOUNT, COLLECTION BIN DOOR	2
3	64.1358	.MOUNT, DOOR CYLINDER	1
4	99.A06	.LOCKNUT, STOVER 3/8-16 USS	2
5	99.SF06	.NUT, SRF 3/8-16 USS	13
6	95.06	.WASHER, FLAT 3/8 SAE	13
7	90.0608	.BOLT, 3/8-16 USSX 1	6
8	99.SF04	.NUT, SRF 1/4-20 USS	2
9	90.0606	.BOLT, 3/8-16 USS X 3/4	3
10	90.0610	.BOLT, 3/8-16 USS X 1-1/4	2
11	95.05	.WASHER, FLAT 5/16 SAE	8
12	99.SF05	.NUT, SRF 5/16-18 USS	8
13	94.06	.WASHER, FLAT 3/8 USS	2
14	05.0083	.WASHER, PVC .375ID X .875 X .0625	2
15	90.0620	.BOLT, 3/8-16 USS X 2-1/2	1
16	41.0048	.SPRING, EXT. 1 OD X 6	1
17	90.0614	.BOLT, 3/8-16 USS X 1-3/4	1
18	05.0119	.WASHER, NYLON	3
19	44.0407	.SCREEN, COLLECTION OUTLET	1
20	64.2009	.CLAMP, VERTICAL SCREEN	2
21	64.2010	.CLAMP, HORIZONTAL SCREEN	2
22	44.0406	.CANVAS, COLLECTION OUTLET	1
23	90.0506	.BOLT, 5/16-18 USS X 3/4"	4
24	90.0508	.BOLT, 5/16-18 USS X 1"	4
25	99.SF0405-1	.BOLT, SMF 1/4-20 X 5/8	2
26	64.1345	.LATCH, BIN DOOR RV	1
27	70.8196	.KIT, COLLECTION BIN DOOR (Door, Canvas, Screen, & Clamps)	1
28	62.1278	.FRAME, COLLECTION DOOR	1
40	04.0020	.SNAP, STUD 3/8 X 9/16 SS	17
41	04.0029	.RIVET, POP 1/8" X 1/4" SS	17

# PARTS

## ILLUSTRATED DRAWING Collection Bin Door Hydraulics



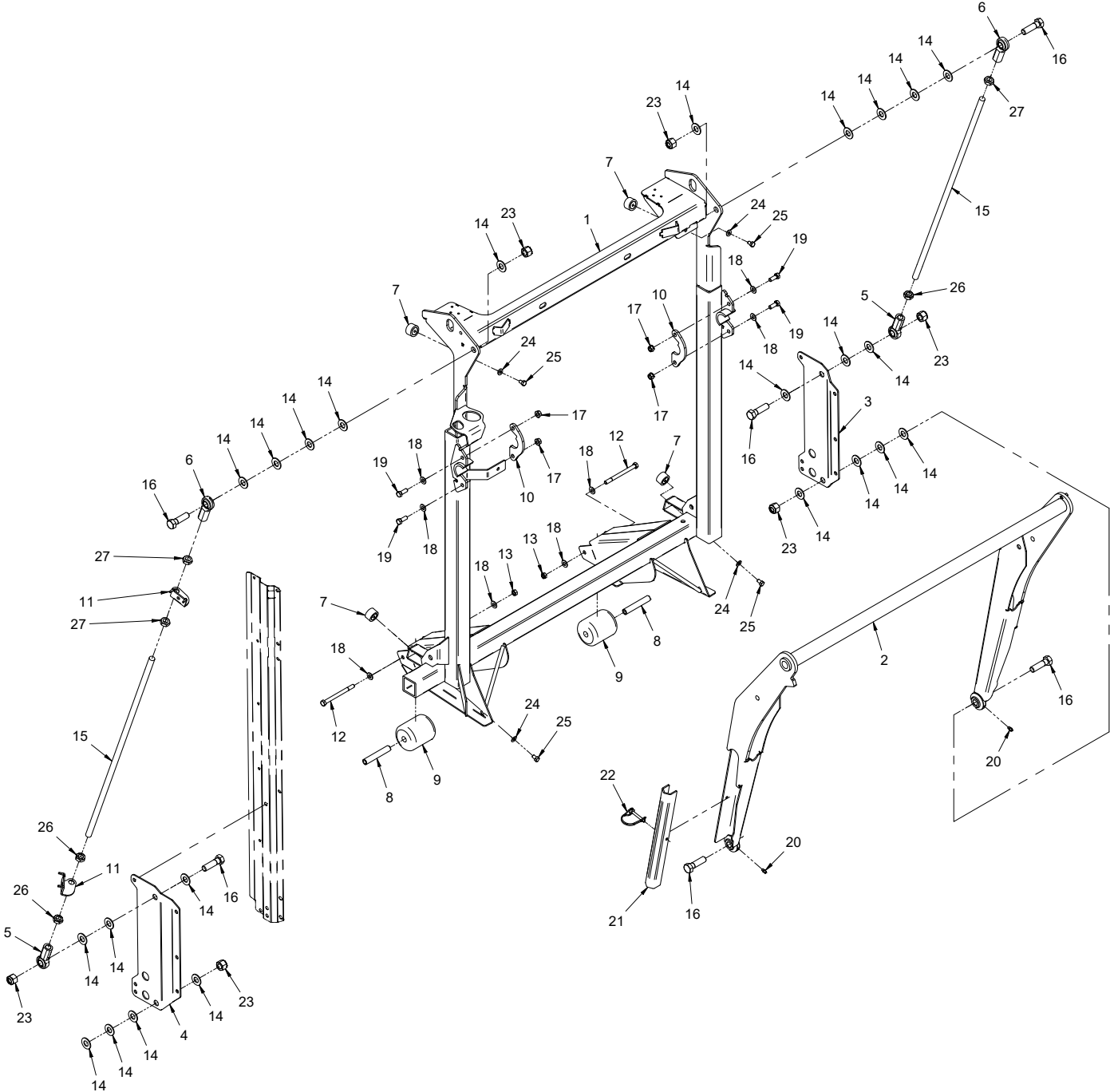
# PARTS

## Collection Bin Door Hydraulics

REF.	PART NO.	DESCRIPTION	QTY.
1	64.1358	.MOUNT, DOOR CYLINDER	1
2	44.0256	.CLAMP, HYD HOSE 12.7MM ID GRN	3
3	25.6801-06-06	.FITTING, 90 ME 3/8 X 3/8	2
4	25.6400-06-06	.FITTING, M CONN 3/8 X 3/8	4
5	95.10	.WASHER, FLAT 5/8 SAE	8
6	91.1018	.BOLT, 5/8-11 USS X 2-1/4	1
7	91.1016	.BOLT, 5/8-11 USS X 2	1
8	99.A10NFN	.LOCKNUT, NYLON 5/8-18 SAE ZP	1
9	99.SF04	.NUT, SRF 1/4-20 USS	2
10	95.05	.WASHER, FLAT 5/16 SAE	3
11	05.0036	.GROMMET, 1 1/2ID,2 1/8OD,9/16T	1
12	95.04	.WASHER, FLAT 1/4 SAE	2
13	90.0414	.BOLT, 1/4-20 USS X 1-3/4"	2
14	99.E0011	.NUT, JAM 5/8 SAE	2
15	99.E0092	.NUT, JAM 5/8-18 SAE LOCKING	1
16	44.0229	.COVER PLATE, 2D GROUP	3
17	90.0518	.BOLT, 5/16-18 USS X 2-1/4"	3
18	99.A05	.LOCKNUT, STOVER 5/16-18 USS	3
19	05.0116	.WASHER, .544 ID X .817 X .14 RED	1
20	05.0117	.WASHER, .544 ID X .817 X .14 YEL	1
21	23.0104	.COUPLER, HYDRAULIC QUICK - 1/4 MALE	2
22	43.010	.ROD END, 5/8 SPHERICAL	4
23	23.0148	.CYLINDER, 1-1/2" X 8" VAC	1
24	23.0149	.VALVE, DOUBLE RELIEF (Serial # 01001-01239)	1
24	23.0178	.VALVE, DOUBLE RELIEF (Serial # 01240-)	1
25	20.0279	.HOSE, 1/4X94.00 SAE 100R17AR	1
26	20.0280	.HOSE, 1/4X84.00 SAE 100R17AR	1
27	20.0283	.HOSE, 1/4X25.00 SAE 100R17AR	1
28	20.0283	.HOSE, 1/4X25.00 SAE 100R17AR	1

# PARTS

## ILLUSTRATED DRAWING Main Frame & Collection Bin Lift Arm Frame



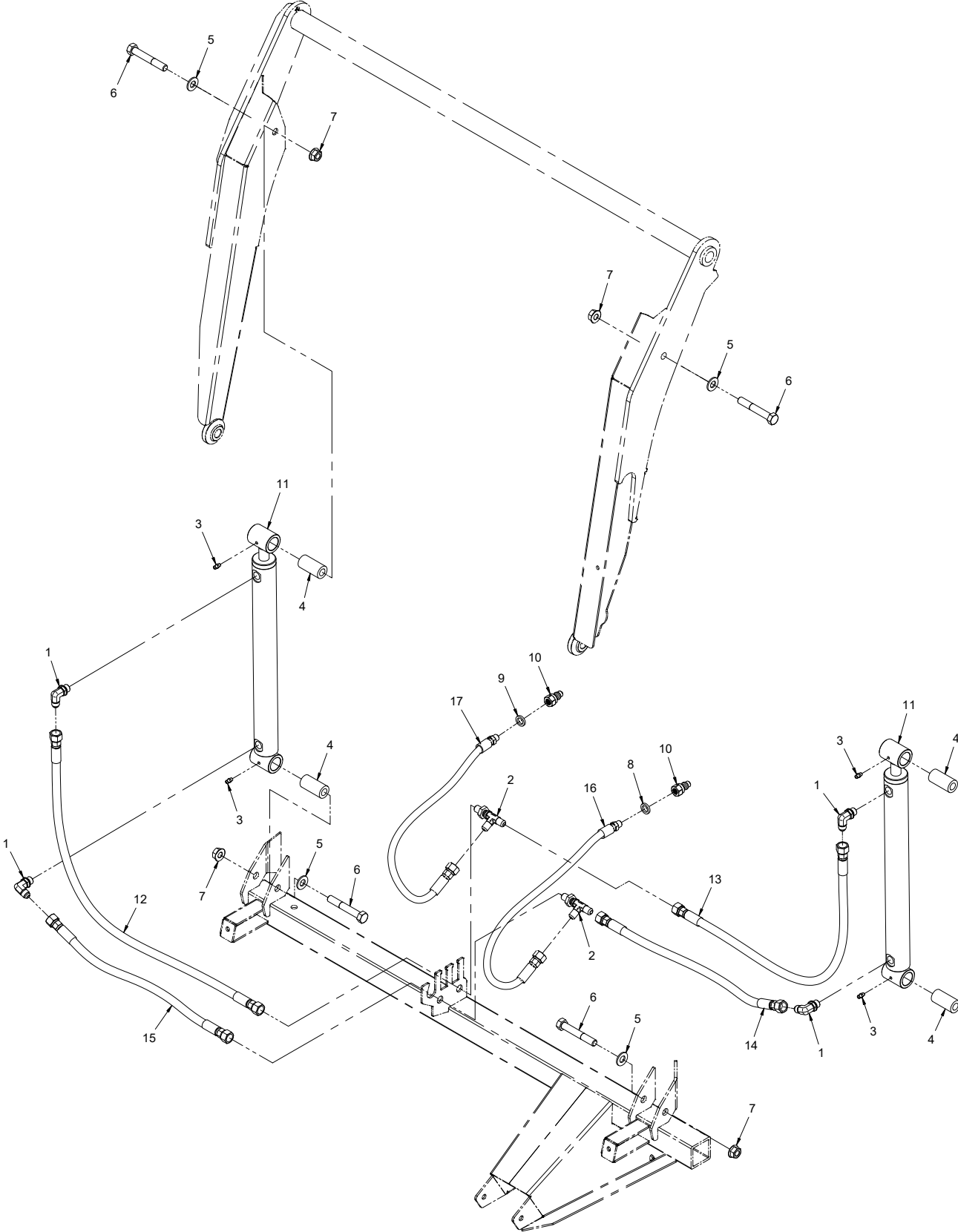
# PARTS

## Main Frame & Collection Bin Lift Arm Frame

REF.	PART NO.	DESCRIPTION	QTY.
1	62.1396	.FRAME, MAIN	1
2	62.1283	.FRAME, LIFT ARM RV600	1
3	64.1353	.MOUNT, BIN LIFTING LEFT	1
4	64.1352	.MOUNT, BIN LIFTING RIGHT	1
5	43.010L	.ROD END, 5/8 SPHERICAL	2
6	43.010	.ROD END, 5/8 SPHERICAL	2
7	05.0118	.BUMPER, RUBBER CYLINDRICAL	4
8	50.0046	.TUBE, AXLE FRONT ROLLER	2
9	50.0047	.ROLLER, FRONT 3" DIA X 3-1/2"	2
10	64.1362	.RETAINER, LIFT ARM HINGE	2
11	64.1437	.BRACKET, HOSE BLOCK HOLDER	2
12	90.0636	.BOLT, 3/8-16 USS X 4-1/2	2
13	99.A06	.LOCKNUT, STOVER 3/8-16 USS	2
14	95.10	.WASHER, FLAT 5/8 SAE	24
15	42.0538	.ROD, THREAD 5/8-18 X 30 RH/LH	2
16	91.1018	.BOLT, 5/8-18 USS X 2-1/4	6
17	99.SF06	.NUT, SRF 3/8-16 USS	4
18	95.06	.WASHER, FLAT 3/8 SAE	8
19	90.0608	.BOLT, 3/8-16 USS X 1	4
20	29.GF0001	.GREASE FTG, 1/4 SAE ST	2
21	64.1454	.SUPPORT, CYLINDER LOCKOUT	1
22	03.0009	.PIN, SAFETY SNAP 1/4 X 1-3/8	1
23	99.A10NFN	.LOCKNUT, NYLON 5/8-18 SAE ZP	6
24	95.05	.WASHER, FLAT 5/16 SAE	4
25	90.0504	.BOLT, 5/16-18 USS X 1/2"	4
26	99.E0090	.NUT, JAM 5/8-18 SAE LH	3
27	99.E0011	.NUT, JAM 5/8 SAE	3

# PARTS

## ILLUSTRATED DRAWING Collection Bin Lift Hydraulics



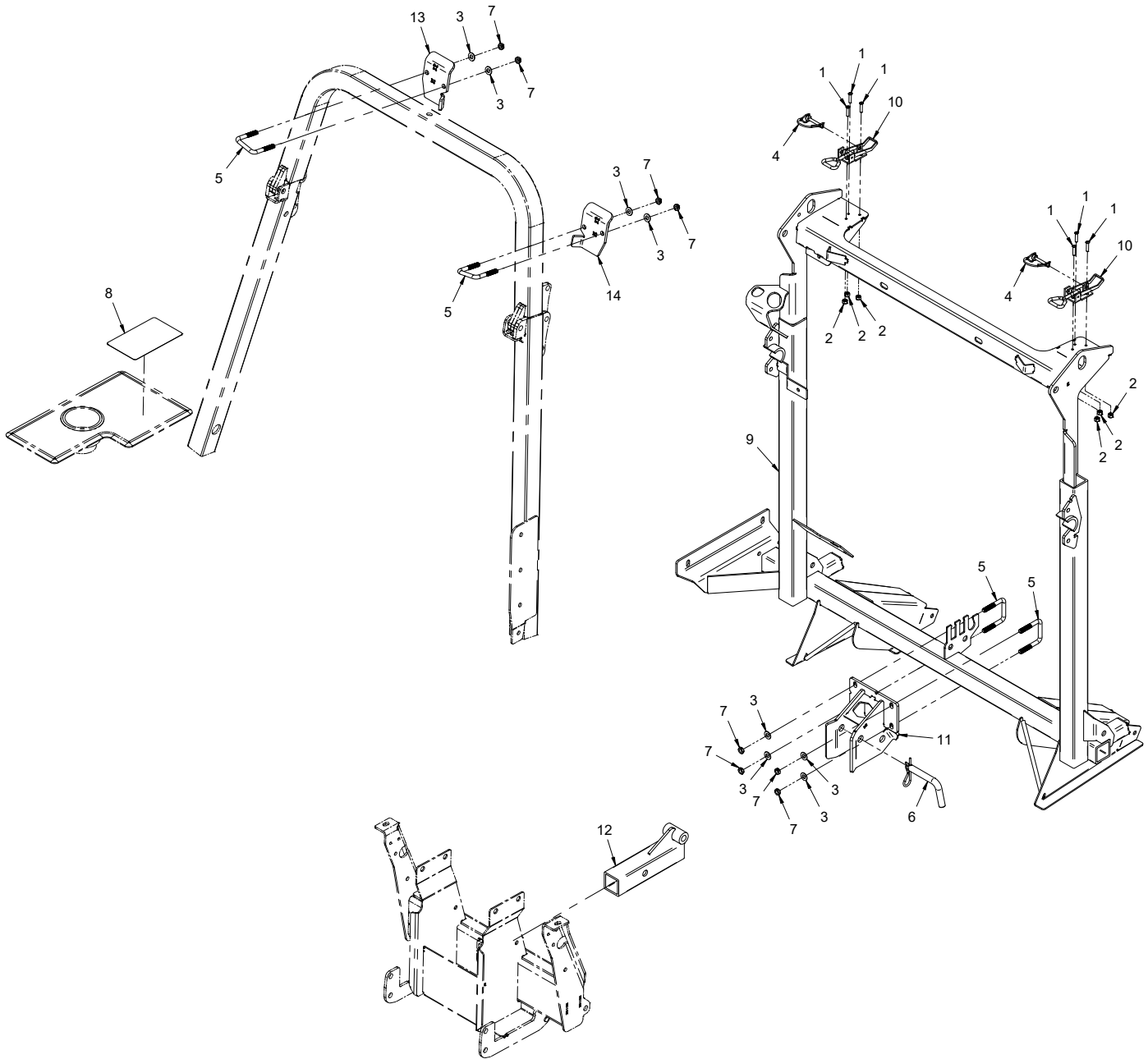
# PARTS

## Collection Bin Lift Hydraulics

REF.	PART NO.	DESCRIPTION	QTY.
1	25.6801-06-06	.FITTING, 90 ME 3/8 X 3/8	4
2	25.2704-6-6-6LN	.FITTING, BULKHEAD T 3/8 W/LNUT	2
3	29.GF0001	.GREASE FTG, 1/4 SAE ST	4
4	64.1459	.BUSHING, 9/16 X 1 X 2L	4
5	95.08	.WASHER, FLAT 1/2 SAE	4
6	90.0826	.BOLT, 1/2-13 USS X 3-1/4	4
7	99.SF08	.NUT, SRF 1/2-13 USS	4
8	05.0116	.WASHER, .544 ID X .817 X .14 RED	1
9	05.0117	.WASHER, .544 ID X .817 X .14 YEL	1
10	23.0104	.COUPLER, HYDRAULIC QUICK - 1/4 MALE	2
11	23.0144	.CYLINDER, 1-1/2" X 14"	2
12	20.0281	.HOSE, 1/4X33.00 SAE 100R17AR	1
13	20.0281	.HOSE, 1/4X33.00 SAE 100R17AR	1
14	20.0282	.HOSE, 1/4X19.00 SAE 100R17AR	1
15	20.0282	.HOSE, 1/4X19.00 SAE 100R17AR	1
16	20.0283	.HOSE, 1/4X25.00 SAE 100R17AR	1
17	20.0283	.HOSE, 1/4X25.00 SAE 100R17AR	1

# PARTS

## ILLUSTRATED DRAWING Tractor Mount (Hitch and Roll Bar)





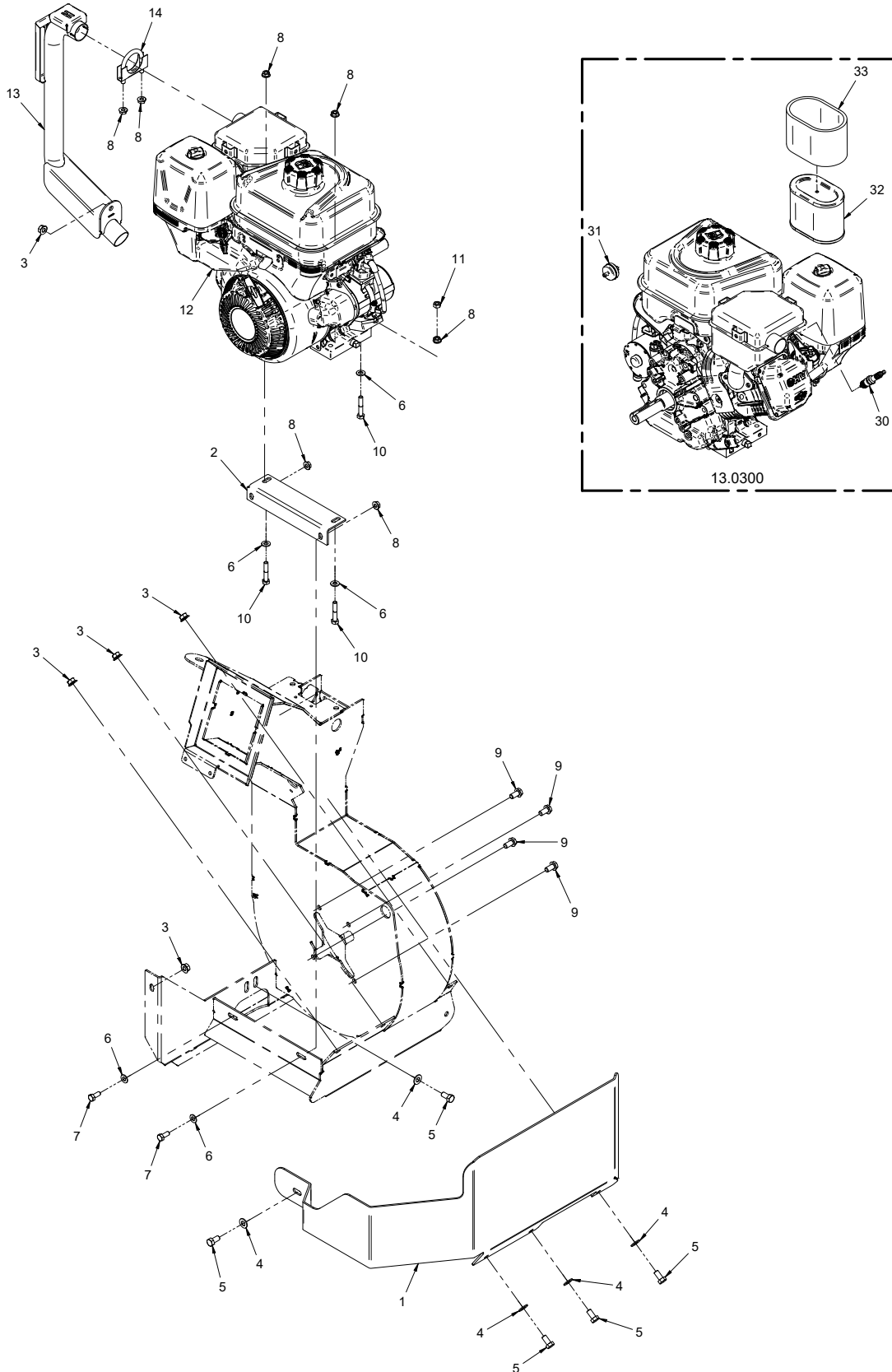
# PARTS

## Tractor Mount (Hitch and Roll Bar)

REF.	PART NO.	DESCRIPTION	QTY.
1	99.K0102	MACHINE SCREW, #12-24 X 3/4 ZP.	6
2	99.E0089	LOCKNUT, NYLON 12-24 ZP.	6
3	95.06	WASHER, FLAT 3/8 SAE	8
4	03.0009	PIN, SAFETY SNAP 1/4 X 1-3/8.	2
5	11.0053	U-BOLT, 3/8-16 2-1/16" ID SQ BEND.	4
6	03.0014	PIN, HITCH 5/8" X 3" USABLE.	1
7	99.A06C	LOCKNUT, CENTER 3/8-16.	8
8	00.0268	DECAL, COLLECTION SYSTEM RV600 (Serial # 01001-01919)	1
8	00.0746	DECAL, COLLECTION SYSTEM RV602 (Serial # 01920-)	1
9	62.1396	FRAME, MAIN RV602.	1
10	47.0273	LATCH, OVER CENTER ADJUSTABLE	2
11	62.1316	HITCH, COLLECTION BASIC	1
12	62.1317	HITCH, TRACTOR RV BASIC	1
13	64.1747	MOUNT, ROLLBAR RIGHT	1
14	64.1748	MOUNT, ROLLBAR LEFT	1

# PARTS

## ILLUSTRATED DRAWING Engine & Guard



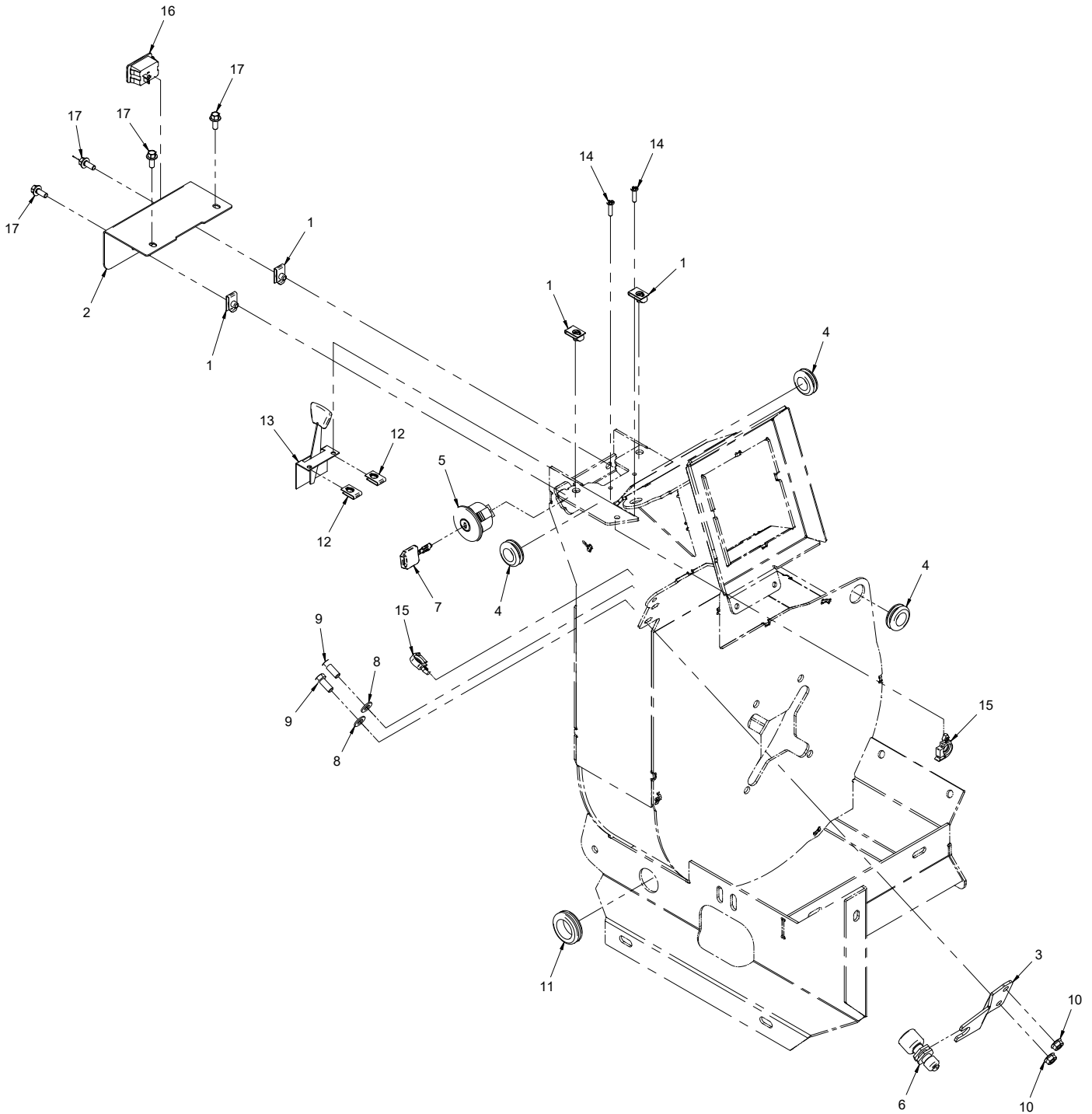
# PARTS

## Engine & Guard

REF.	PART NO.	DESCRIPTION	QTY.
1	62.1410	.BUMPER, ENGINE/FAN GUARD	1
2	64.1450	.BRACKET, ENGINE MOUNT	1
3	99.SF06	.NUT, SRF 3/8-16 USS	5
4	95.06	.WASHER, FLAT 3/8 SAE	5
5	90.0606	.BOLT, 3/8-16 USS X 3/4	5
6	95.05	.WASHER, FLAT 5/16 SAE	5
7	90.0506	.BOLT, 5/16-18 USS X 3/4"	2
8	99.SF05	.NUT, SRF 5/16-18 USS	7
9	99.SF0606	.BOLT, SRF 3/8-16 USS X 3/4	4
10	90.0514	.BOLT, 5/16-18 USS X 1-3/4"	3
11	92.05	.NUT, 5/16-18 USS	1
12	13.0300	.ENGINE, B&S VANG 10HP GAS AC	1
13	13.0234	.TUBE, EXHAUST FOR 13.0233	1
14	11.0039	.CLAMP, EXH. 5/16 X 1 1/2 ASM.	1
30	13.491055S	.PLUG, SPARK	1
31	13.394358S	.FILTER, FUEL	1
32	13.797032	.FILTER, AIR	1
33	13.798795	.FILTER, AIR PRE CLEANER	1

# PARTS

## ILLUSTRATED DRAWING Engine Controls & Electrical Components



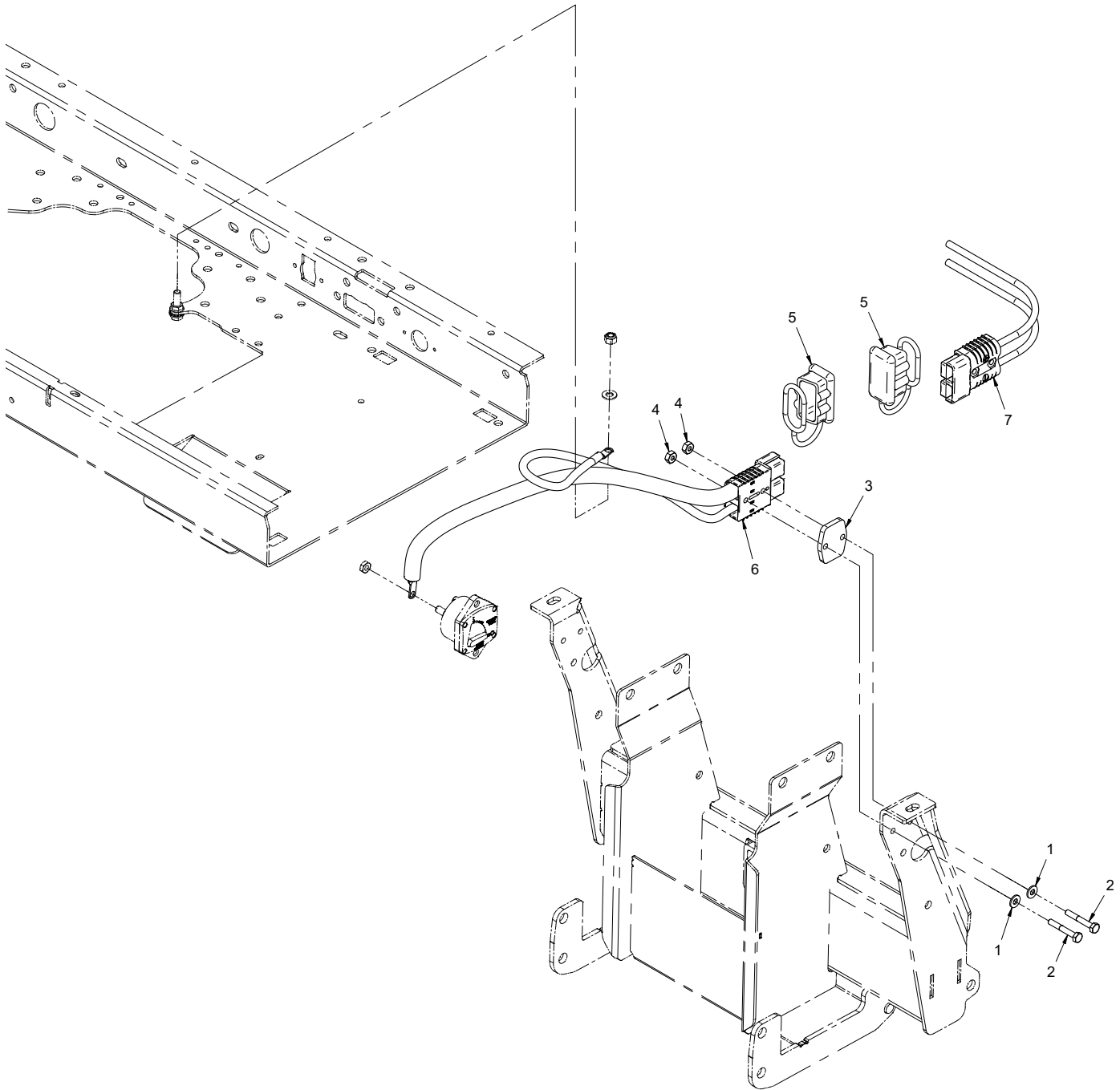
# PARTS

## Engine Controls & Electrical Components

REF.	PART NO.	DESCRIPTION	QTY.
1	99.E0046	.NUT, "U" 1/4-20 EXTRUDED	4
2	60.1199	.COVER, IGNITION SWITCH	1
3	64.1778	.BRACKET, SHUTOFF SWITCH MOUNT	1
4	05.0045	.GROMMET, 3/4ID, 1 3/8OD, 1/2THK	3
5	13.0078	.SWITCH, IGNITION DELTA	1
6	31.0048	.SWITCH, ENGINE SHUTOFF - NC	1
7	13.0080	.KEY, IGNITION DELTA	1
8	95.05	.WASHER, FLAT 5/16 SAE	2
9	90.0506	.BOLT, 5/16-18 USS X 3/4"	2
10	99.SF05	.NUT, SRF 5/16-18 USS	2
11	05.0060	.GROMMET, 1-1/8 ID, 1-3/4 OD	1
12	99.E0091	.NUT, "U" #10-24 EXTRUDED	2
13	47.0179	.CABLE, THROTTLE 40" 1-5/8 TRAV.	1
14	99.K0106	.MACHINE SCREW, #10-24 X 3/4	2
15	30.0135	.CLAMP, LOOM 3/8 ROSEBUD MOUNT	2
16	35.0138	.GAUGE, HOUR METER 12V	1
17	99.SF0405-1	.BOLT, SMF 1/4-20 X 5/8	4

# PARTS

## ILLUSTRATED DRAWING Battery Cable Connector



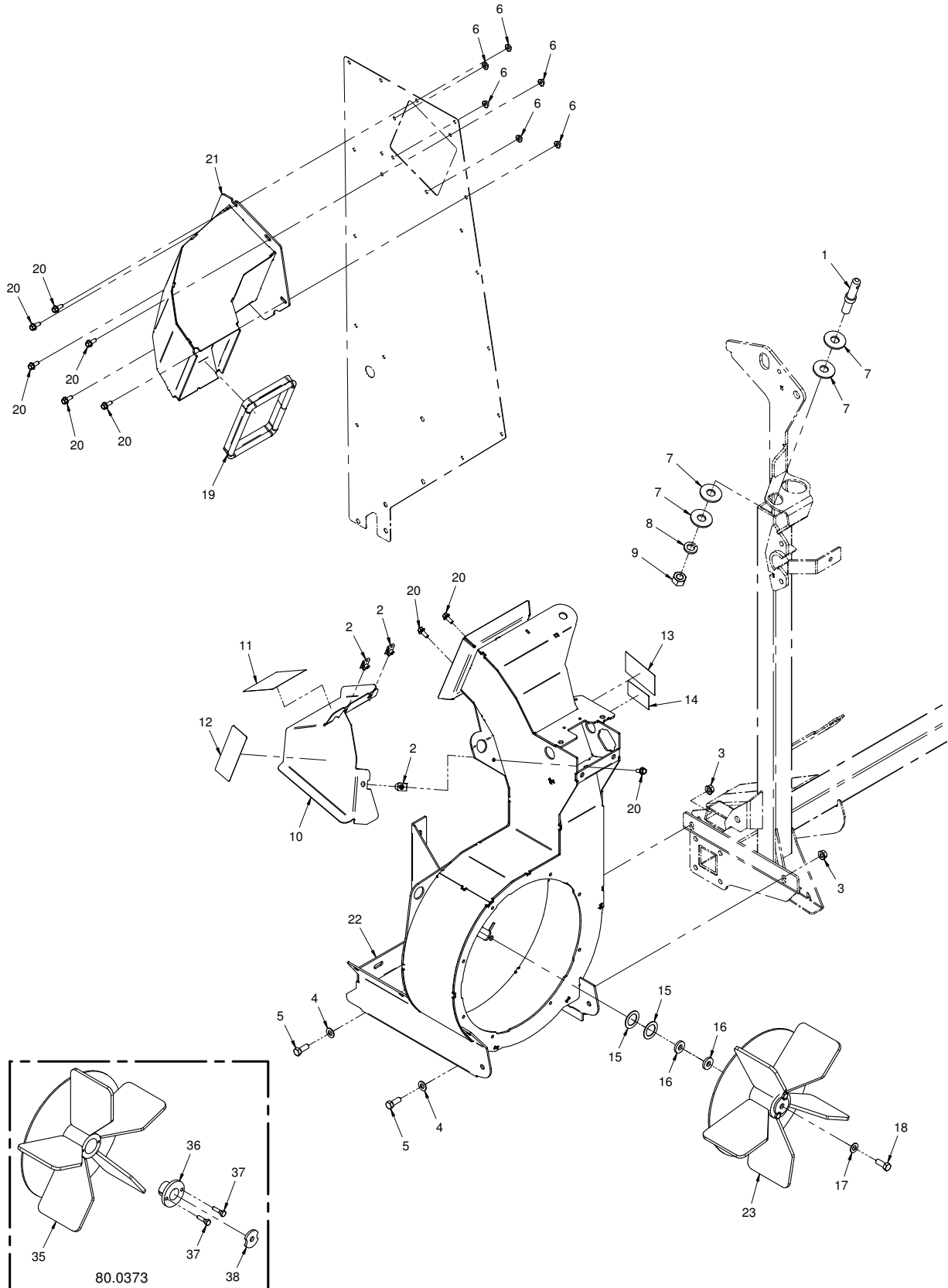
# PARTS

## Battery Cable Connector

REF.	PART NO.	DESCRIPTION	QTY.
1	95.04	WASHER, FLAT 1/4 SAE	2
2	90.0414	BOLT, 1/4-20 USS X 1-3/4"	2
3	64.1433	PLATE, BATTERY CONNECTOR MOUNT	1
4	92.04H	NUT, HEAVY 1/4-20 USS	2
5	30.0315	COVER, SB 175 CONNECTOR	2
6	32.0094	CABLE, ASM BATTERY VAC/TRACTOR	1
7	32.0095	CABLE, ASM BATTERY VAC/ENGINE	1

# PARTS

## ILLUSTRATED DRAWING Fan Housing, Fan, & Upper Chute





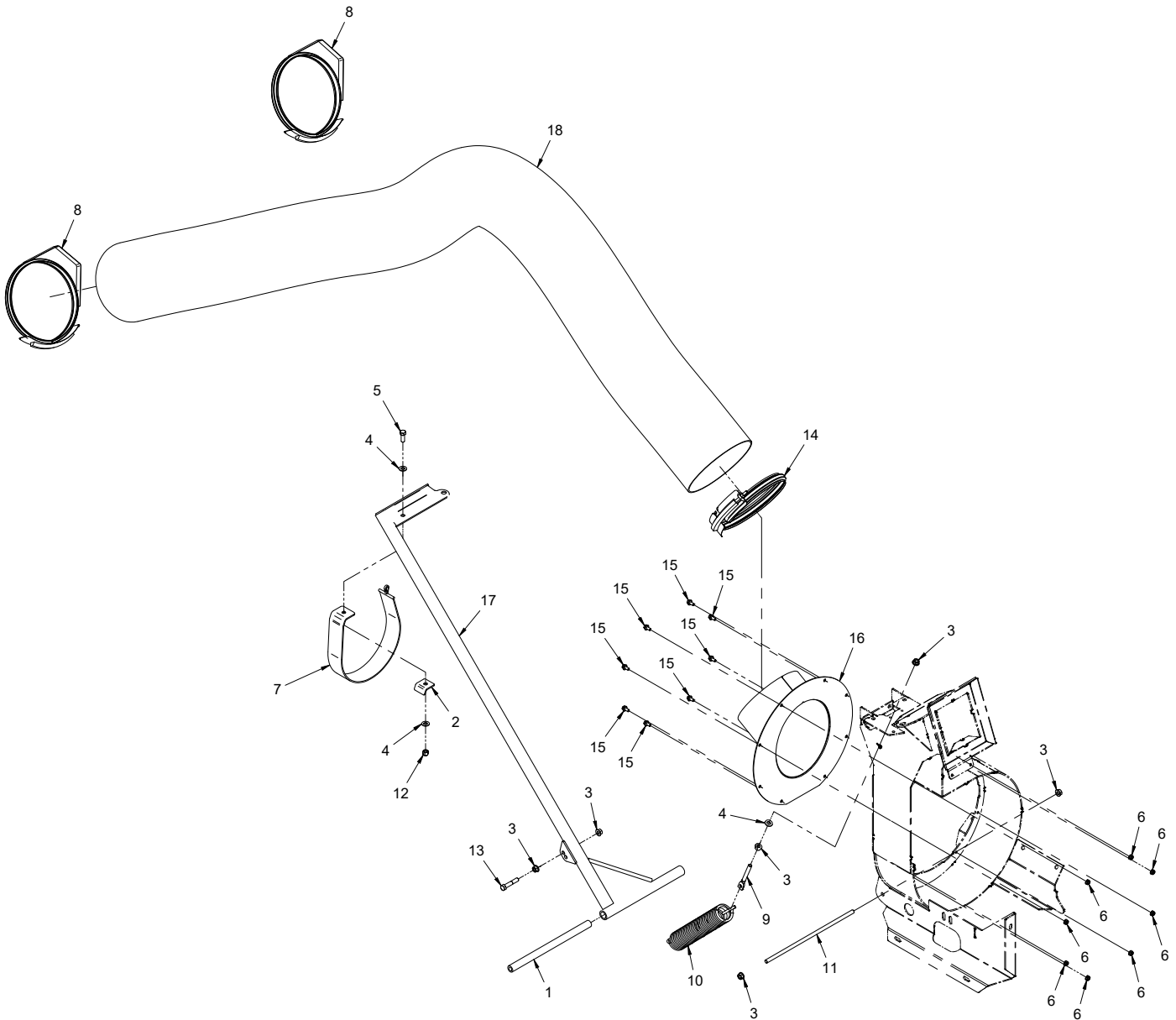
# PARTS

## Fan Housing, Fan, & Upper Chute

REF.	PART NO.	DESCRIPTION	QTY.
1	03.0016	.PIN, LIFT ARM 5/8 X 3-7/8	1
2	99.E0046	.NUT, "U" 1/4-20 EXTRUDED	3
3	99.SF06	.NUT, SRF 3/8-16 USS	2
4	95.06	.WASHER, FLAT 3/8 SAE	2
5	90.0608	.BOLT, 3/8-16 USS X 1	2
6	99.SF04	.NUT, SRF 1/4-20 USS	6
7	94.10	.WASHER, FLAT 5/8 USS	4
8	96.10	.WASHER, LOCK 5/8	1
9	92.10	.NUT, 5/8-11 USS	1
10	60.1183	.SHIELD, ENGINE EXHAUST	1
11	00.0122	.DECAL, THROWN OBJECT HAZARD (Serial # 01001-01919)	1
11	00.0674	.DECAL, THROWN OBJECTS (Serial # 01920-)	1
12	00.0332	.DECAL, GASOLINE ONLY (Serial # 01001-01919)	1
12	00.0457	.DECAL, GASOLINE SAFETY (Serial # 01920-)	1
13	00.0217	.DECAL, WARNING READ OWNERS MAN (Serial # 01001-01919)	1
13	00.0619	.DECAL, READ OPERATOR'S MANUAL (Serial # 01920-)	1
14	00.0219	.DECAL, WARNING DO NOT REACH (Serial # 01001-01919)	1
14	00.0632	.DECAL, MOVING PARTS HAZARD (Serial # 01920-)	1
15	99.B0017	.WASHER, MACH 1" 18GA	2
16	99.G0014	.WASHER, 3/8 USS FW .165 THK	2
17	99.B0047	.WASHER, FLAT 3/8 SAE GRADE 8	1
18	99.K0104	.BOLT, 3/8-24 X 1 GRD 8	1
19	06.0043-22.5IN	.TRIM, 7/16" BULB SEAL TOP 1/16T X 22-1/2"	1
20	99.SF0405-1	.BOLT, SMF 1/4-20 X 5/8	9
21	60.1182	.DUCT, COLLECTION BIN	1
22	62.1395	.HOUSING, COLLECTION FAN	1
23	80.0373	.FAN, COLLECTION SYSTEM ASM	1
35	80.0373-1	.FAN, COLLECTION SYSTEM	1
36	80.0373-2	.BUSHING, 1" TAPER HUB	1
37	90.0408	.BOLT, 1/4-20 USS X 1"	2
38	80.0373-3	.WASHER, COLLECTION FAN	1

# PARTS

## ILLUSTRATED DRAWING Vacuum Hose & Support Arm



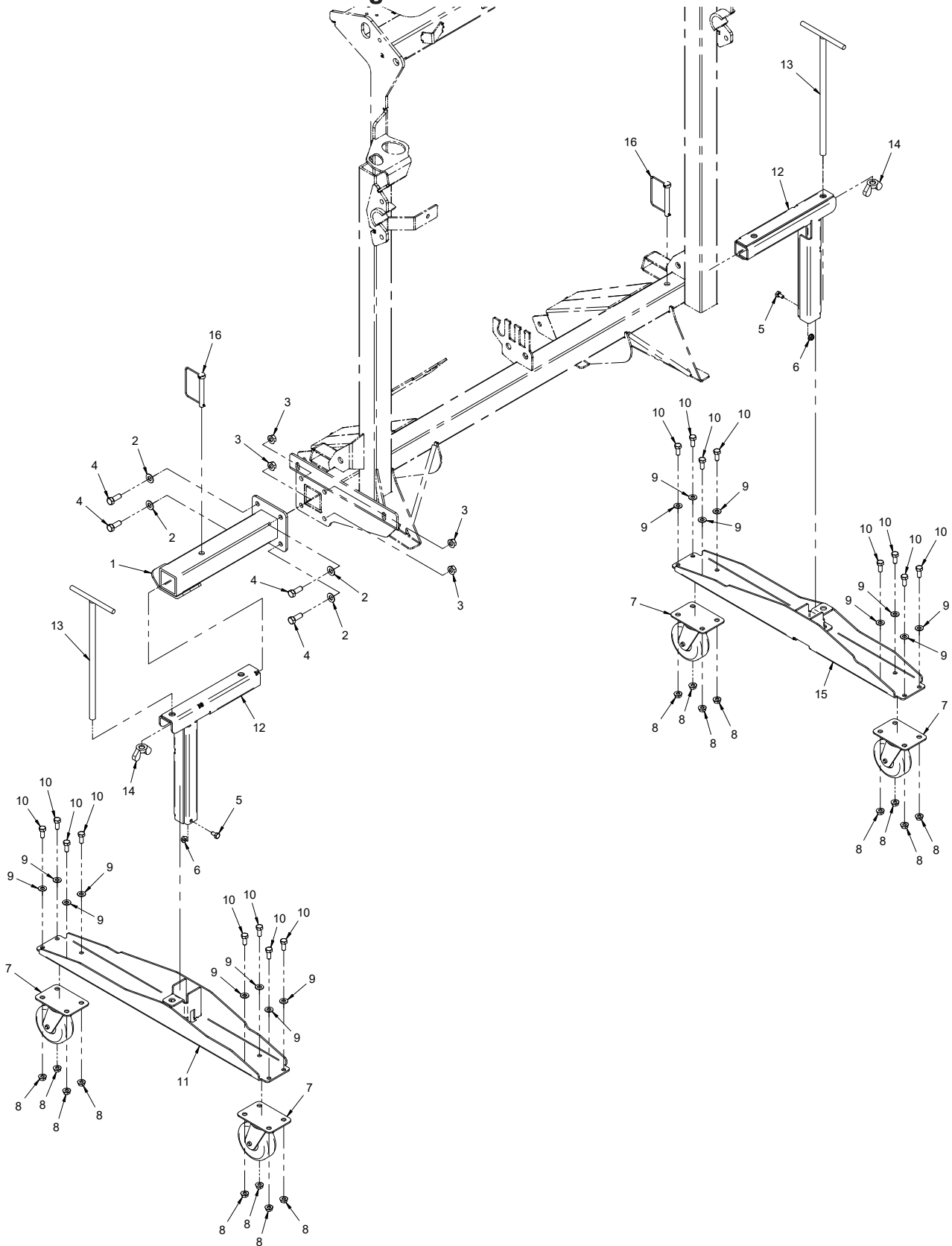
# PARTS

## Vacuum Hose & Support Arm

REF.	PART NO.	DESCRIPTION	QTY.
1	64.1440	.TUBE, 3/4OD X 7/16ID X 11-3/4L	1
2	64.1451	.CLAMP, STRAP	1
3	99.SF06	.NUT, SRF 3/8-16 USS	6
4	95.06	.WASHER, FLAT 3/8 SAE	3
5	90.0608	.BOLT, 3/8-16 USS X 1	1
6	99.SF04	.NUT, SRF 1/4-20 USS	8
7	44.0254	.STRAP, HOSE RETAINER	1
8	11.0066	.CLAMP, HOSE 8" V-BAND W/ LATCH	2
9	99.K0094	.BOLT, HANGER 3/8-16 X 4	1
10	41.0076	.SPRING, EXT 2" OD X 12-3/8 LG	1
11	42.0543	.ROD, THREAD 3/8-16 X 13 ALL THREAD	1
12	99.A06N	.LOCKNUT, NYLON 3/8-16 USS	1
13	90.0616	.BOLT, 3/8-16 USS X 2	1
14	11.0067	.CLAMP, HOSE 8" V-BAND W/ NUT	1
15	99.SF0404-1	.BOLT, SMF 1/4-20 X 1/2	8
16	60.1040	.DUCT, FAN INLET RV	1
17	42.0540	.ARM, COLLECTION HOSE SUPPORT	1
18	47.0270	.HOSE, 8" COLLECTION 9' 4" DUCT	1

# PARTS

## ILLUSTRATED DRAWING Storage Stands with Casters



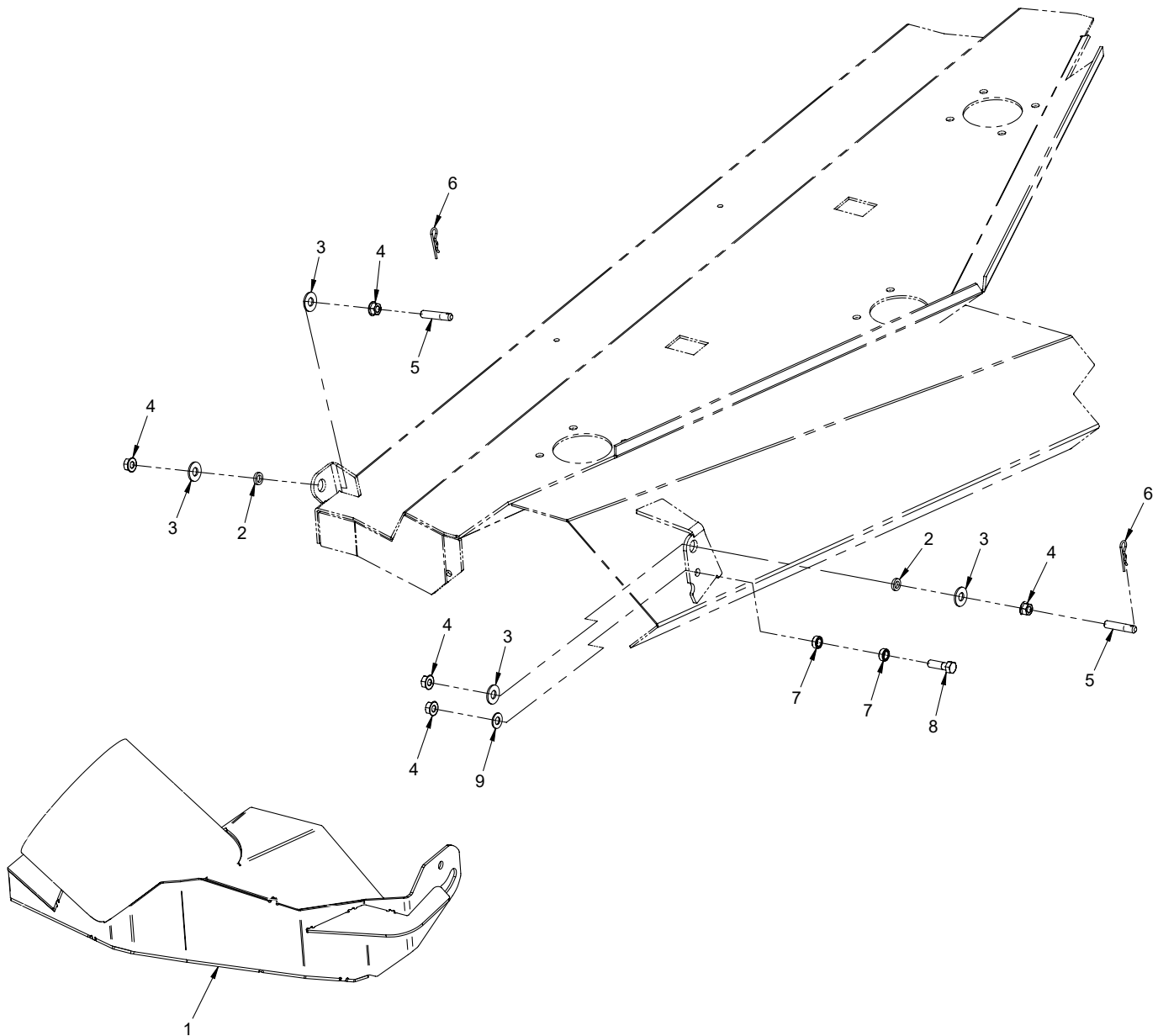
# PARTS

## Storage Stands with Casters

REF.	PART NO.	DESCRIPTION	QTY.
1	64.1460	.FRAME, MAIN EXTENSION - RV	1
2	95.06	.WASHER, FLAT 3/8 SAE	4
3	99.SF06	.NUT, SRF 3/8-16 USS	4
4	90.0608	.BOLT, 3/8-16 USS X 1	4
5	90.0404	.BOLT, 1/4-20 USS X 1/2"	2
6	99.SF04	.NUT, SRF 1/4-20 USS	2
7	53.0136	.WHEEL, CASTER 3-1/2 DIA X 1-1/4	4
8	99.SF05	.NUT, SRF 5/16-18 USS	16
9	95.05	.WASHER, FLAT 5/16 SAE	16
10	90.0506	.BOLT, 5/16-18 USS X 3/4"	16
11	62.1310	.STAND, RV STORAGE LEFT	1
12	62.1311	.STAND, STORAGE LEG	2
13	42.0539	.ADJUSTER, RV STORAGE STAND	2
14	99.E0093	.NUT, WING 1/2-13 USS	2
15	62.1309	.STAND, RV STORAGE RIGHT	1
16	03.0015	.PIN, SAFETY SNAP 3/8 X 3"	2

# PARTS

## ILLUSTRATED DRAWING 70.8090 HM602 Vacuum Boot



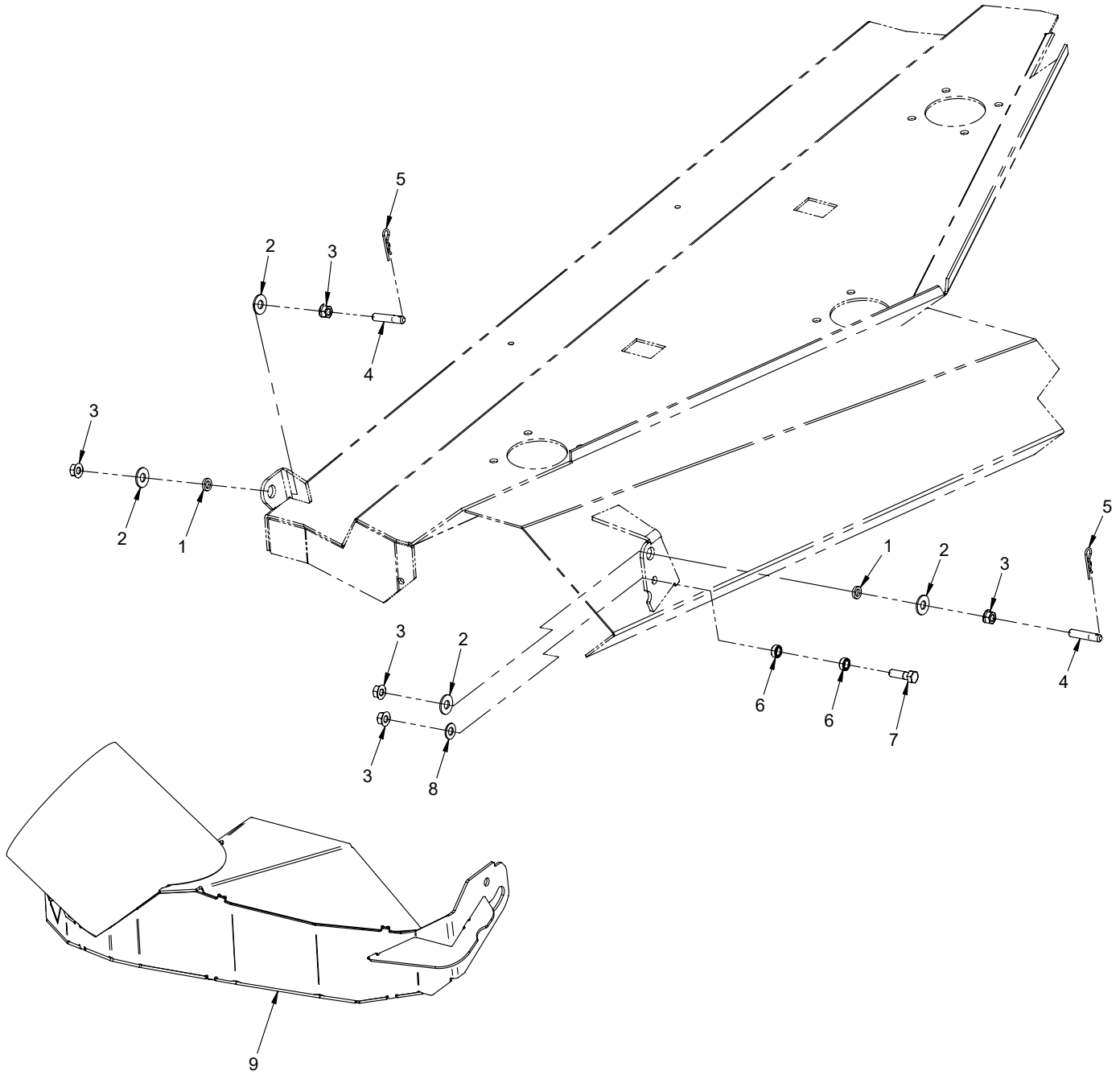
# PARTS

## 70.8090 HM602 Vacuum Boot

REF.	PART NO.	DESCRIPTION	QTY.
1	62.1305	.BOOT, COLLECTION - HM602	1
2	05.0119	.WASHER, NYLON	2
3	94.06	.WASHER, FLAT 3/8 USS	4
4	99.SF06	.NUT, SRF 3/8-16 USS	5
5	99.F0042	.PIN, LIFT ARM 3/8-16 X 1-7/8	2
6	02.HP0313	.HAIRPIN, 3/32 X 1-5/8	2
7	64.0602	.BUSHING, 3/8 X 5/8 X .265	2
8	90.0610	.BOLT, 3/8-16 USS X 1-1/4	1
9	95.06	.WASHER, FLAT 3/8 SAE	1

# PARTS

## ILLUSTRATED DRAWING 70.8091 HM/HP72 Vacuum Boot





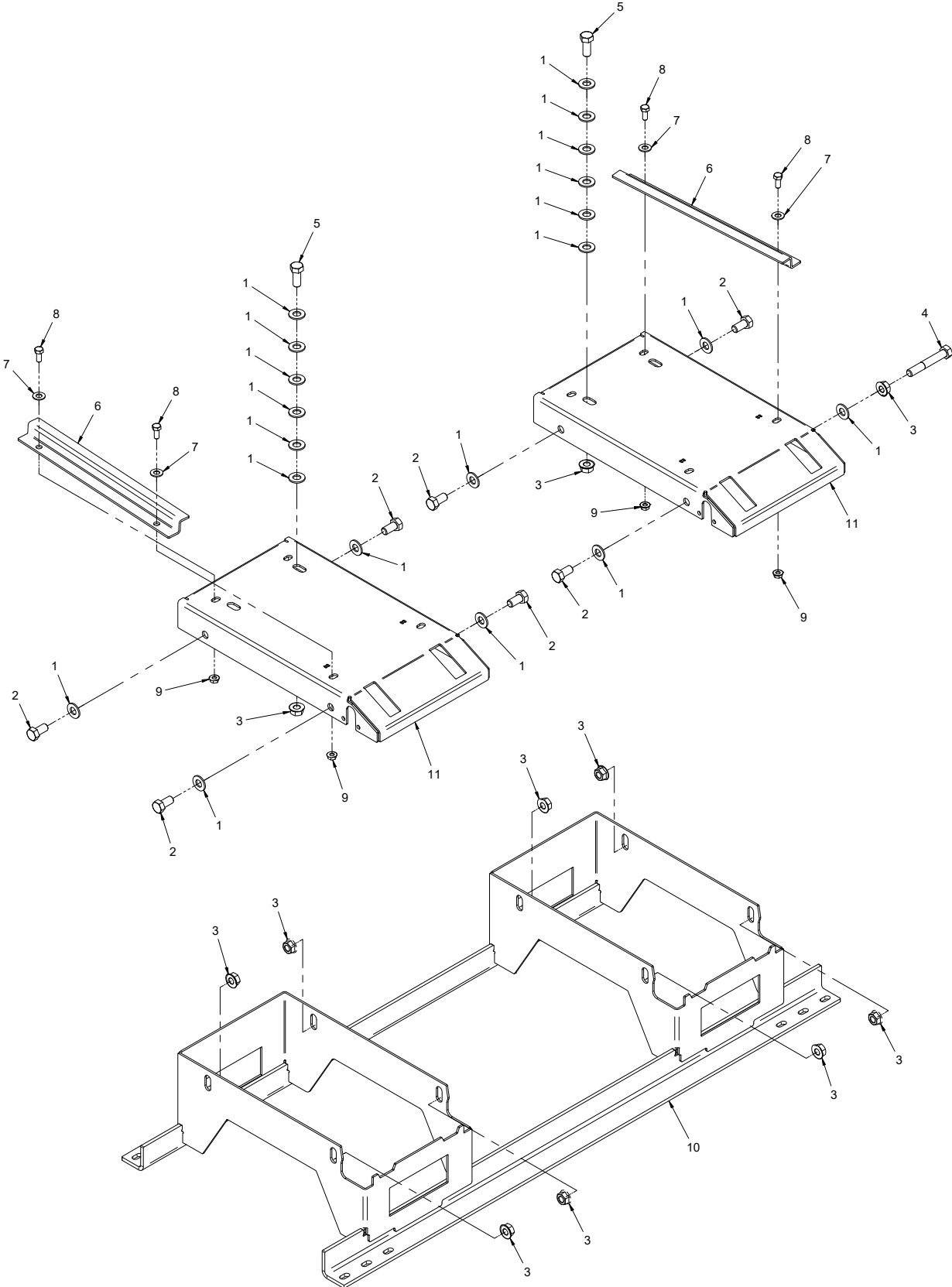
# PARTS

## 70.8091 HM/HP722 Vacuum Boot

REF.	PART NO.	DESCRIPTION	QTY.
1	05.0119	WASHER, NYLON	2
2	94.06	WASHER, FLAT 3/8 USS	4
3	99.SF06	NUT, SRF 3/8-16 USS	5
4	99.F0042	PIN, LIFT ARM 3/8-16 X 1-7/8	2
5	02.HP0313	HAIRPIN, 3/32 X 1-5/8	2
6	64.0602	BUSHING, 3/8 X 5/8 X .265	2
7	90.0610	BOLT, 3/8-16 USS X 1-1/4	1
8	95.06	WASHER, FLAT 3/8 SAE	1
9	62.1315	BOOT, COLLECTION - HM/HP722	1

# PARTS

## ILLUSTRATED DRAWING 70.8092 Docking Station Base



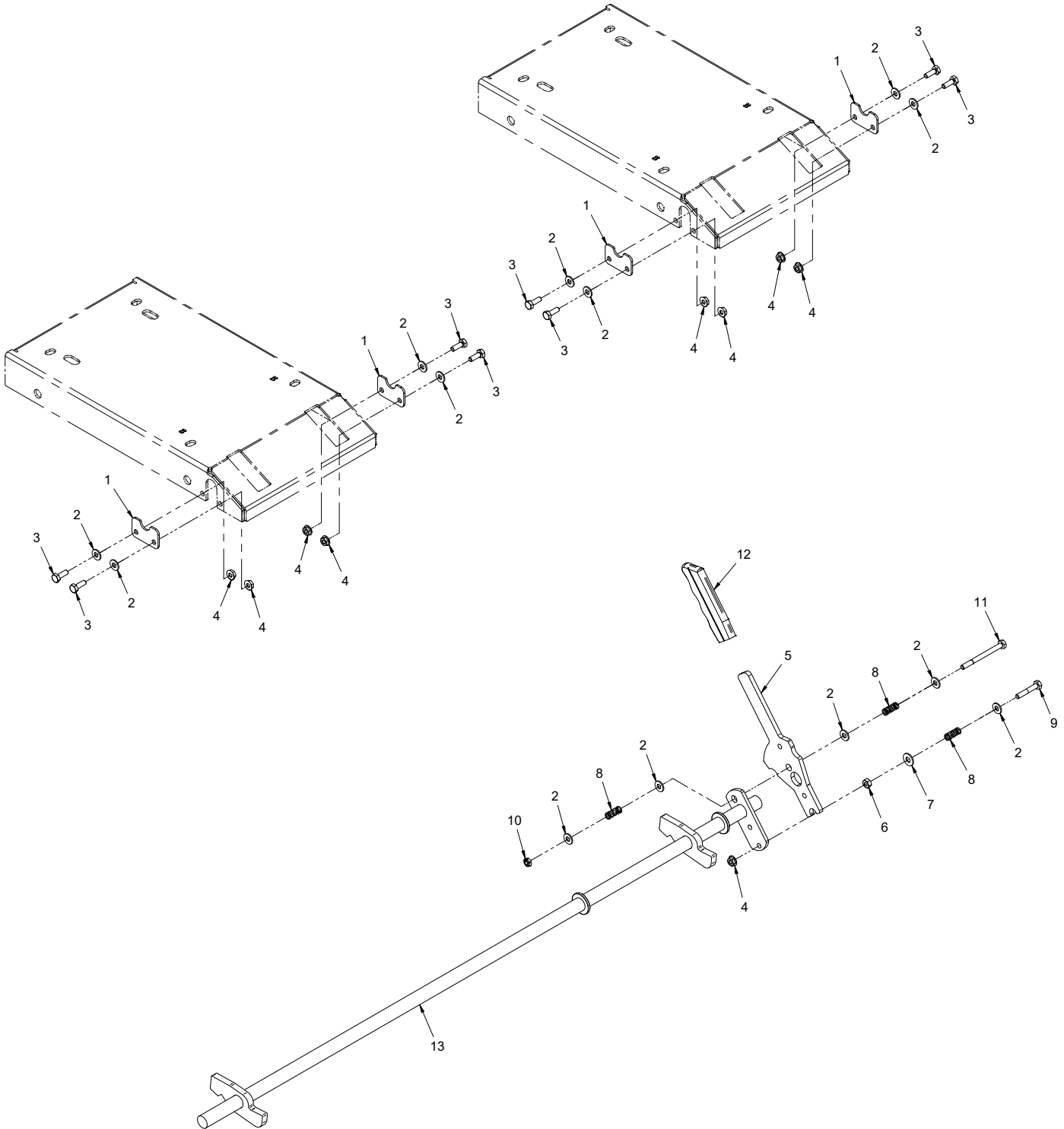
# PARTS

## 70.8092 Docking Station Base

REF.	PART NO.	DESCRIPTION	QTY.
1	95.08	WASHER, FLAT 1/2 SAE	20
2	90.0808	BOLT, 1/2-13 USS X 1	7
3	99.SF08	NUT, SRF 1/2-13 USS	11
4	90.0826	BOLT, 1/2-13 USS X 3-1/4	1
5	90.0810	BOLT, 1/2-13 USS X 1-1/4	2
6	42.0541	GUIDE, STORAGE STAND	2
7	95.06	WASHER, FLAT 3/8 SAE	4
8	90.0506	BOLT, 5/16-18 USS X 3/4"	4
9	99.SF05	NUT, SRF 5/16-18 USS	4
10	62.1313	FRAME, STORAGE STAND	1
11	62.1314	STAND, ROLLER RAMP	2

# PARTS

## ILLUSTRATED DRAWING 70.8092 Docking Station Latch



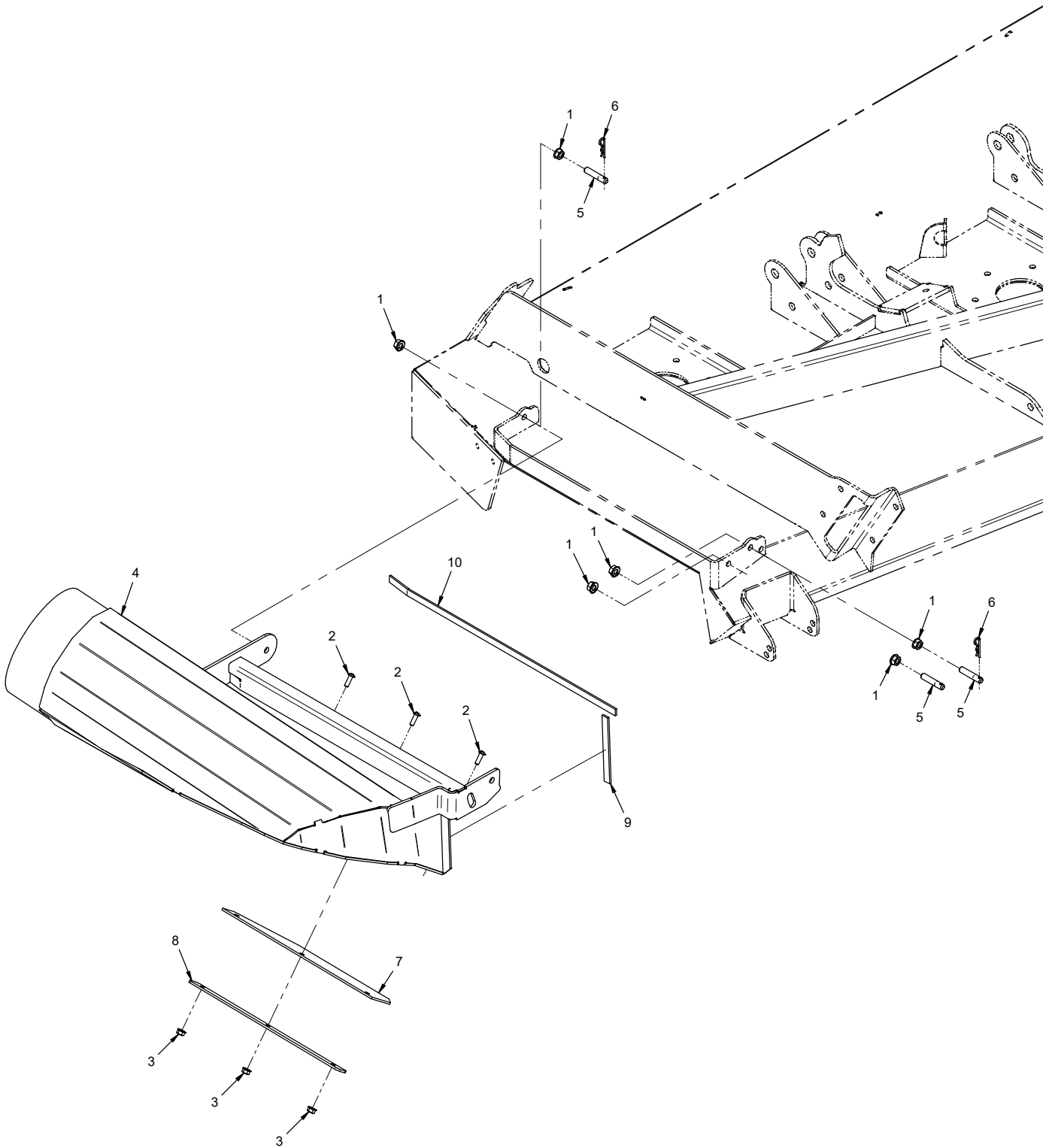
# PARTS

## 70.8092 Docking Station Latch

REF.	PART NO.	DESCRIPTION	QTY.
1	64.1439	.RETAINER, STORAGE LATCH	4
2	95.04	.WASHER, FLAT 1/4 SAE	13
3	90.0406	.BOLT, 1/4-20 USS X 3/4"	8
4	99.SF04	.NUT, SRF 1/4-20 USS	9
5	40.0358	.HANDLE, STORAGE LATCH	1
6	92.04	.NUT, 1/4-20 USS	1
7	94.04	.WASHER, FLAT 1/4 USS	1
8	41.0094	.SPRING, COMP 3/8 OD X 1" LG	3
9	90.0412	.BOLT, 1/4-20 USS X 1-1/2"	1
10	99.A04	.LOCKNUT, STOVER 1/4-20 USS	1
11	90.0424	.BOLT, 1/4-20 USS X 3"	1
12	47.0086	.GRIP, SLIP-ON HANDLE - BLACK	1
13	64.1438	.LATCH, STORAGE STAND	1

# PARTS

## ILLUSTRATED DRAWING 70.8169 MS/MT Vacuum Boot



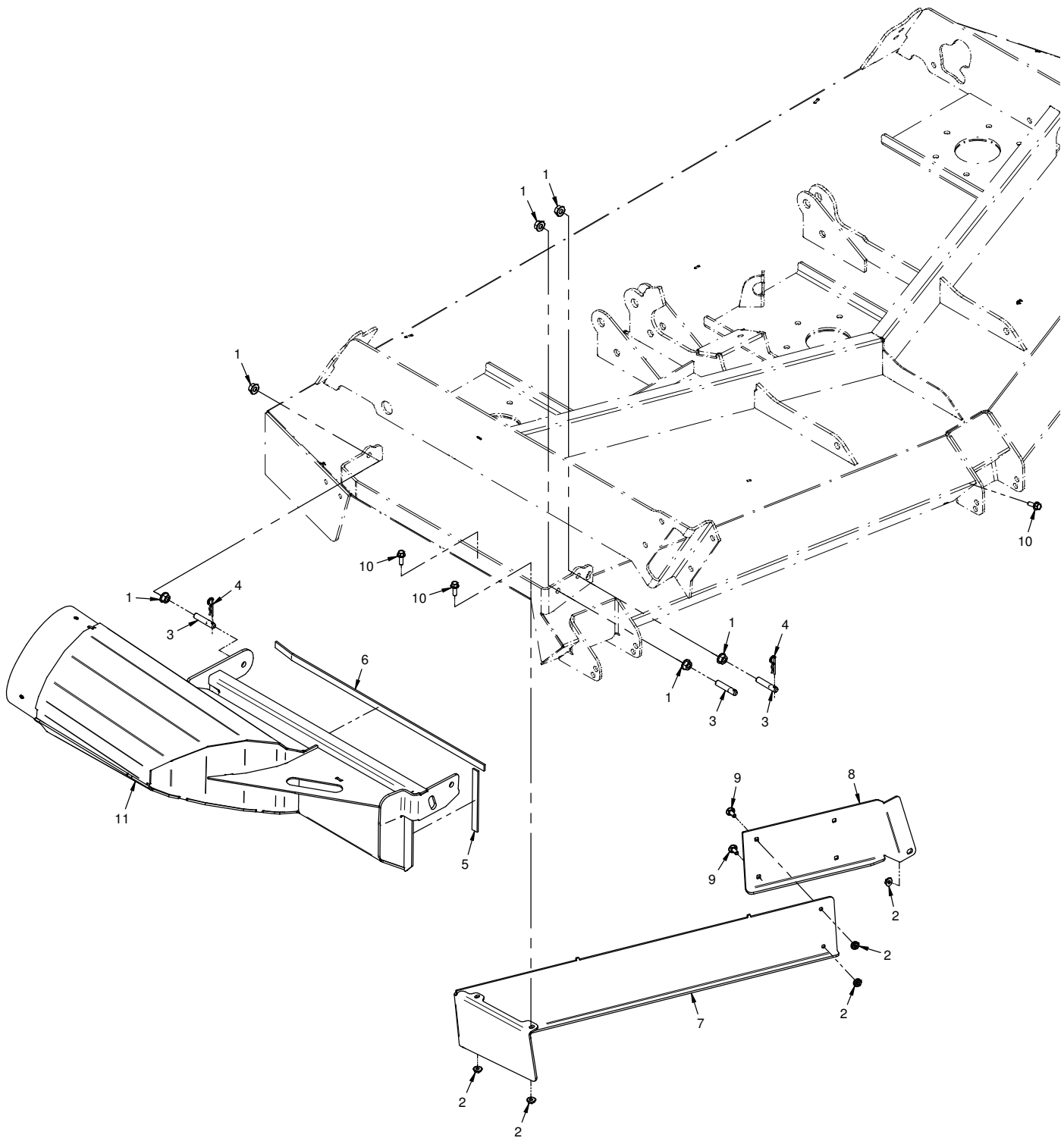
# PARTS

## 70.8169 MS/MT Vacuum Boot

REF.	PART NO.	DESCRIPTION	QTY.
1	99.SF06	.NUT, SRF 3/8-16 USS.	6
2	99.0406	.BOLT, 1/4-20 X 3/4 BSCS.	3
3	99.E0101	.NUT, LOCKING FLANGE 1/4-20	3
4	62.1490	.BOOT COLLECTION MS/MT.	1
5	99.F0042	.PIN, LIFT ARM 3/8-16 X 1-7/8	3
6	02.HP0313	.HAIRPIN, 3/32 X 1-5/8	2
7	44.0390	.BELTING, VAC CHUTE	1
8	64.1996	.BRACKET, STRAP	1
9	06.0078-5IN	.WEATHERSTRIP, 1/8 X 1/2 X 5"	1
10	06.0078-20.75IN	.WEATHERSTRIP, 1/8 X 1/2 X 20-3/4"	1

# PARTS

## ILLUSTRATED DRAWING 70.8210 Vacuum Boot MS/MT Mowers





# PARTS

## 70.8210 Vacuum Boot MS/MT Mowers

REF.	PART NO.	DESCRIPTION	QTY.
1	99.SF06	.NUT, SRF 3/8-16 USS.	6
2	99.SF04	.NUT, SRF 1/4-20 USS.	5
3	99.F0042	.PIN, LIFT ARM 3/8-16 X 1-7/8	3
4	02.HP0313	.HAIRPIN, 3/32 X 1-5/8	2
5	06.0078-5IN	.WEATHERSTRIP, 1/8 X 1/2 X 5"	1
6	06.0078-20.75IN	.WEATHERSTRIP, 1/8 X 1/2 X 20-3/4"	1
7	MS-298	.BAFFLE, DISCHARGE MS/MT	1
8	MS-299	.BAFFLE, FRONT DISCHARGE MS/MT	1
9	97.0406	.BOLT, CARRIAGE 1/4 X 3/4	2
10	99.SF0406-1	.BOLT, SMF 1/4-20 X 3/4	3
11	62.1505	.BOOT COLLECTION MS/MT	1