

Parts Manual

DR540

Ballpark Groomer





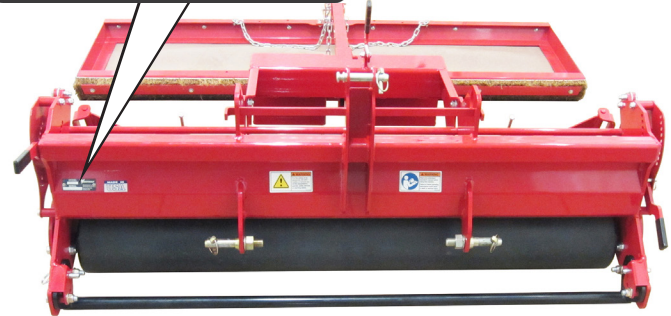
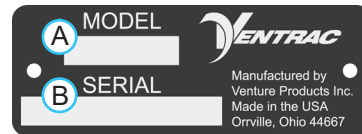
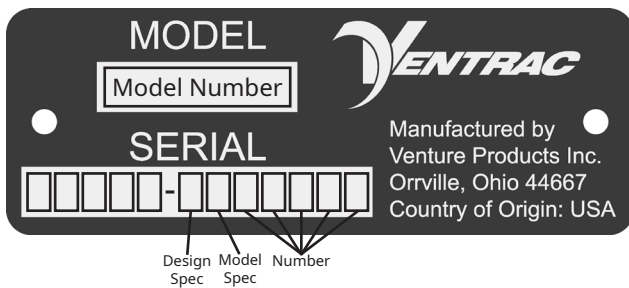
500 Venture Drive
Orrville Oh 44667
www.ventrac.com

View all manuals



Visit ventrac.com/manuals for the latest version of this parts manual. A downloadable operator's manual is also available.

Serial Number Description



Notes

- If any component requires replacement, use only original Ventrac replacement parts.
- When ordering new components, be sure to order all required safety decals. All current safety decals must be affixed to the replacement components prior to installation of the component.

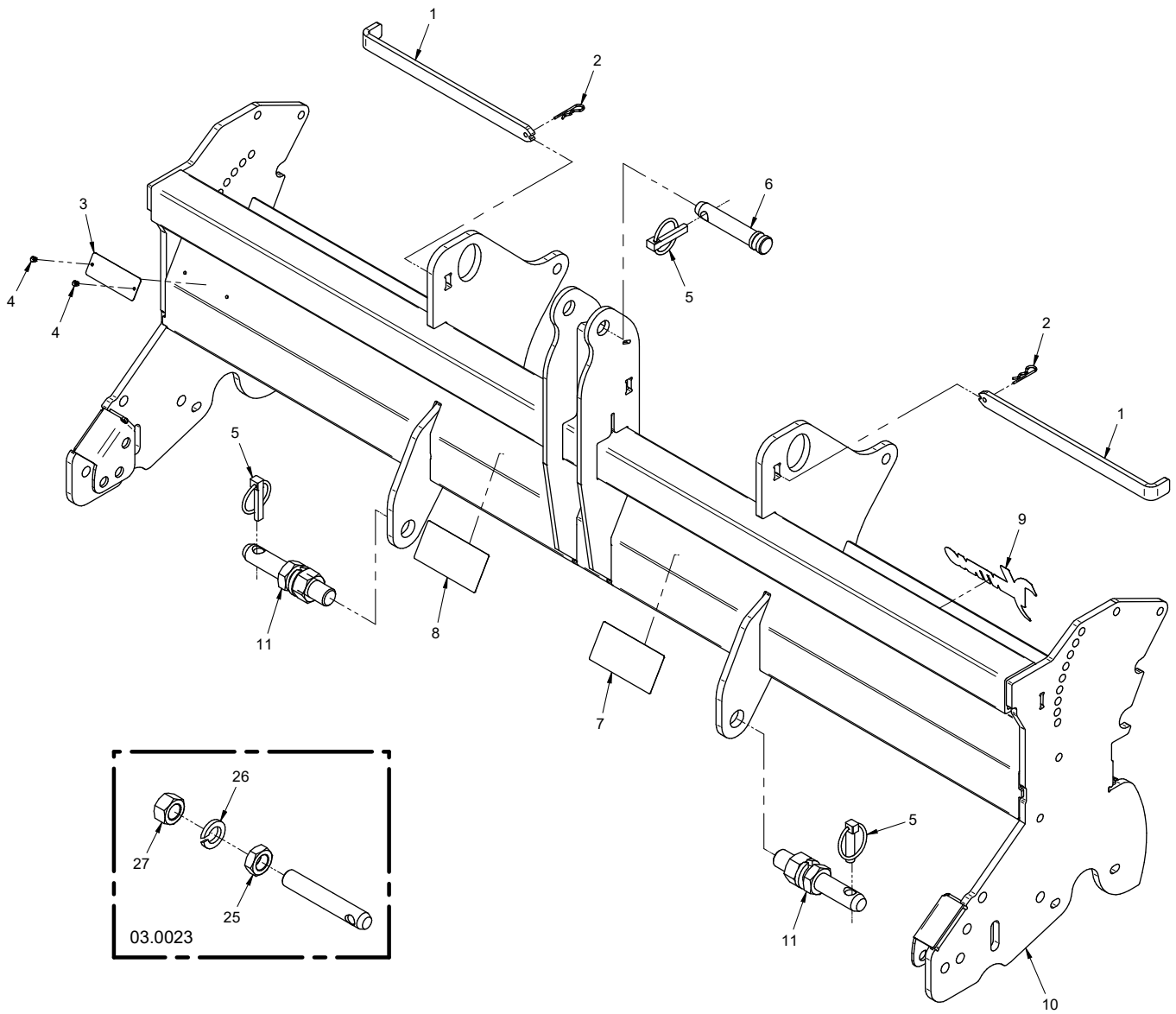
TABLE OF CONTENTS

PARTS	PAGE 4
Main Frame	4
Leveling Bar	6
Rear Roller	8
Spike Bar.....	10

OPTIONS	PAGE 12
70.8156 Groomer Brush Frame & Wings.....	12
70.8156 Groomer Brush Adjustment Linkage	14
70.8154 Groomer Drag Frame & Arm	16
70.8154 Groomer Steel Drag	18
70.8154 Groomer Coco Mat Drag.....	20

PARTS

ILLUSTRATED DRAWING Main Frame



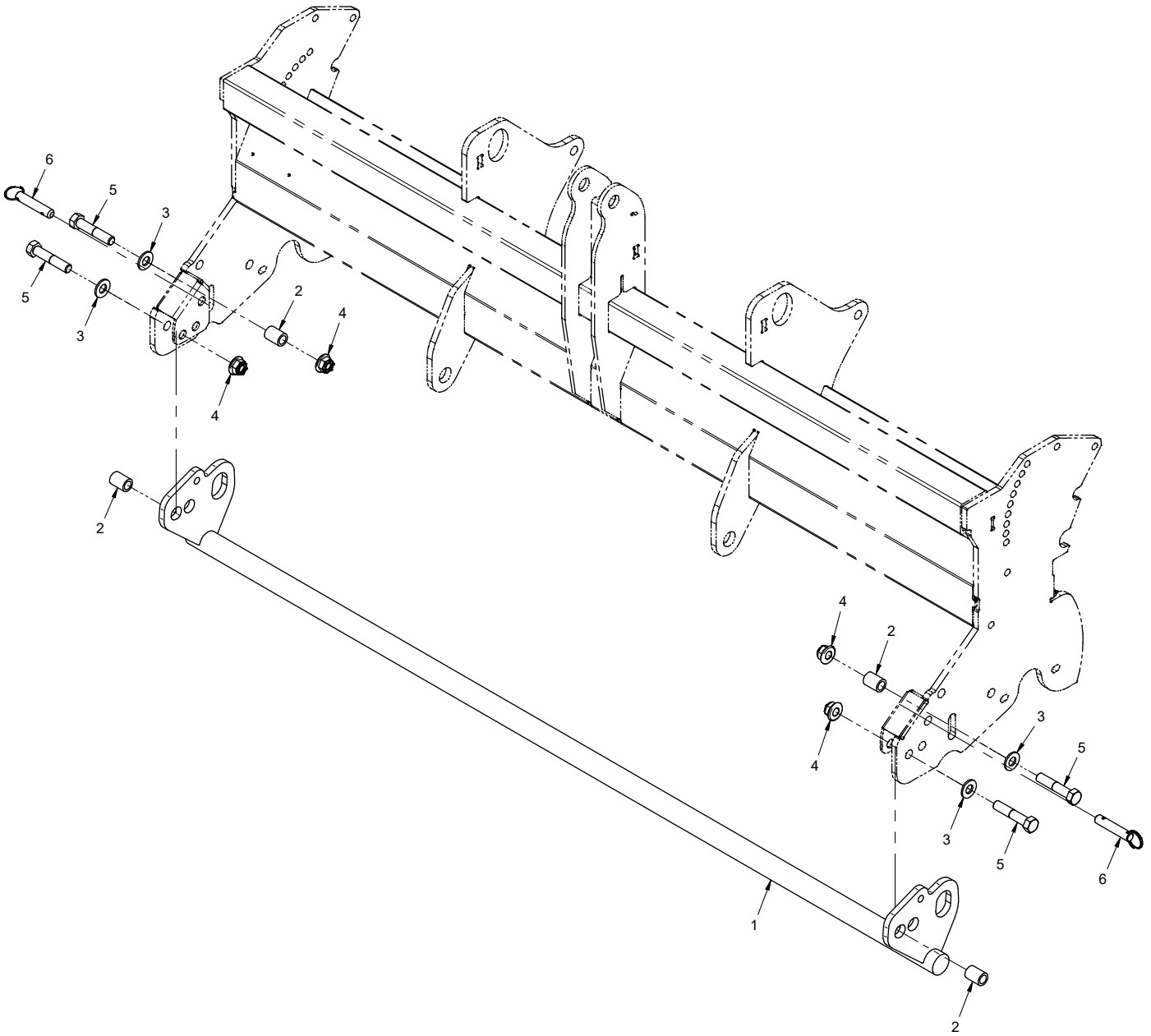
PARTS

Main Frame

REF.	PART NO.	DESCRIPTION	QTY.
1	64.1312	.PIN, WEIGHT RETAINER	2
2	02.HP0313	.HAIRPIN, 3/32 X 1-5/8	2
3	N/A	.PLATE, VENTRAC SERIAL NUMBER	1
4	04.0007	.RIVET, POP DOME 1/8 X 1/8 S.S.	2
5	03.0005	.PIN, LINCH	3
6	03.0004	.PIN, TOP LINK CATEGORY 1	1
7	00.0217	.DECAL, WARNING READ OWNERS MAN (Serial # 01001-01541)	1
7	00.0619	.DECAL, WARNING READ OWNERS MAN (Serial # 01542-)	1
8	00.0220	.DECAL, GENERAL SAFETY (Serial # 01001-01541)	1
8	00.0632	.DECAL, GENERAL SAFETY (Serial # 01542-)	1
9	00.0382	.DECAL, VENTRAC	1
10	62.1429	.FRAME, MAIN DR540	1
11	03.0023	.PIN, LIFT ARM 7/8" X 5-3/4	2
25	99.E0074	.NUT, JAM 7/8-14 SAE	1
26	96.14	.WASHER, LOCK 7/8	1
27	93.14	.NUT, 7/8-14 SAE	1

PARTS

ILLUSTRATED DRAWING Leveling Bar



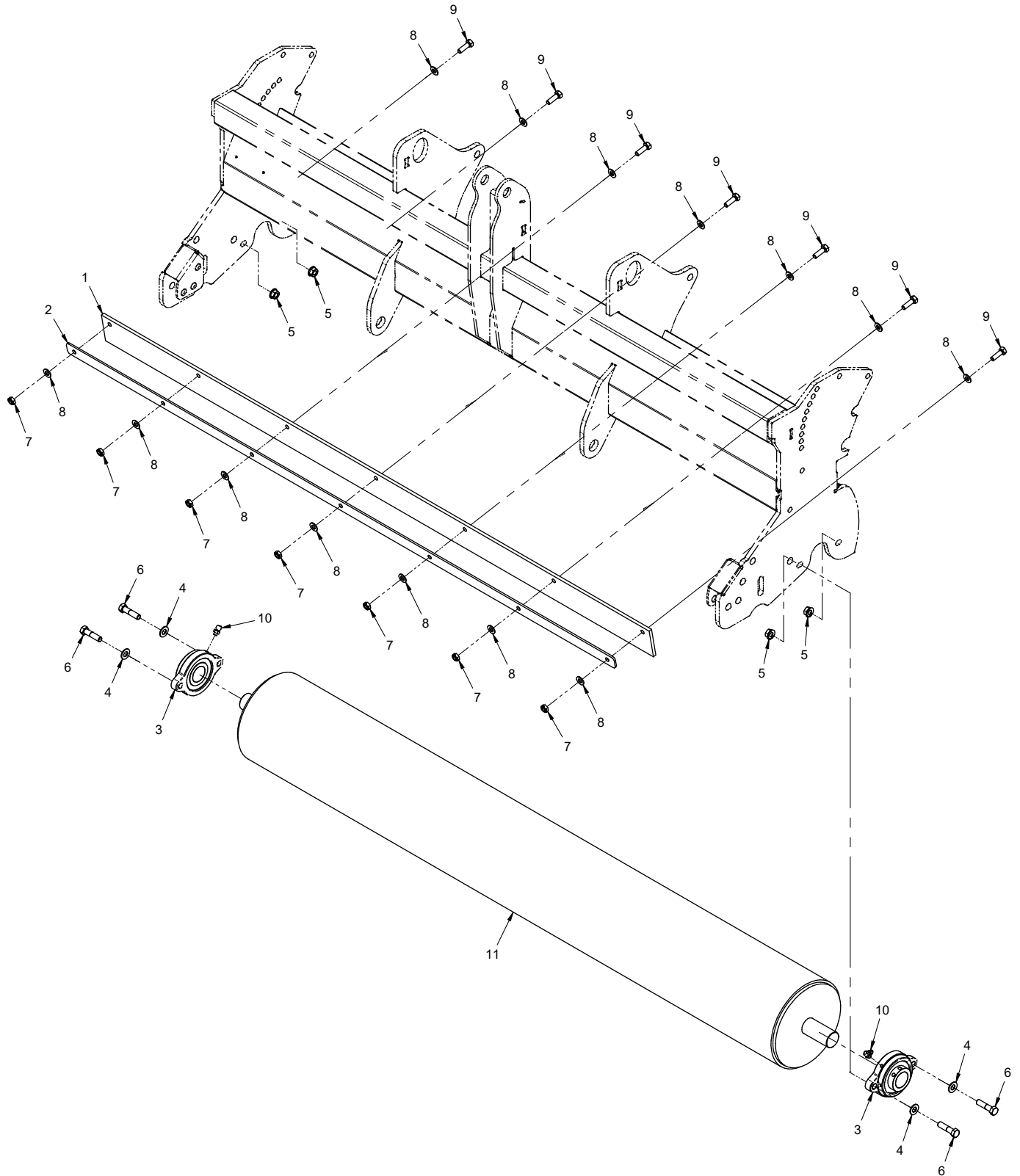
PARTS

Leveling Bar

REF.	PART NO.	DESCRIPTION	QTY.
1	62.1430	.FRAME, LEVELING BAR	1
2	64.1877	.BUSHING, LEVELING BAR PIVOT	4
3	95.08	.WASHER, FLAT 1/2 SAE	4
4	99.E0119	.LOCKNUT, NYLON - FLANGE 1/2-13	4
5	90.0820	.BOLT, 1/2-13 USS X 2-1/2	4
6	03.0007	.PIN, BALL 1/2 X 1.8"	2

PARTS

ILLUSTRATED DRAWING Rear Roller



PARTS

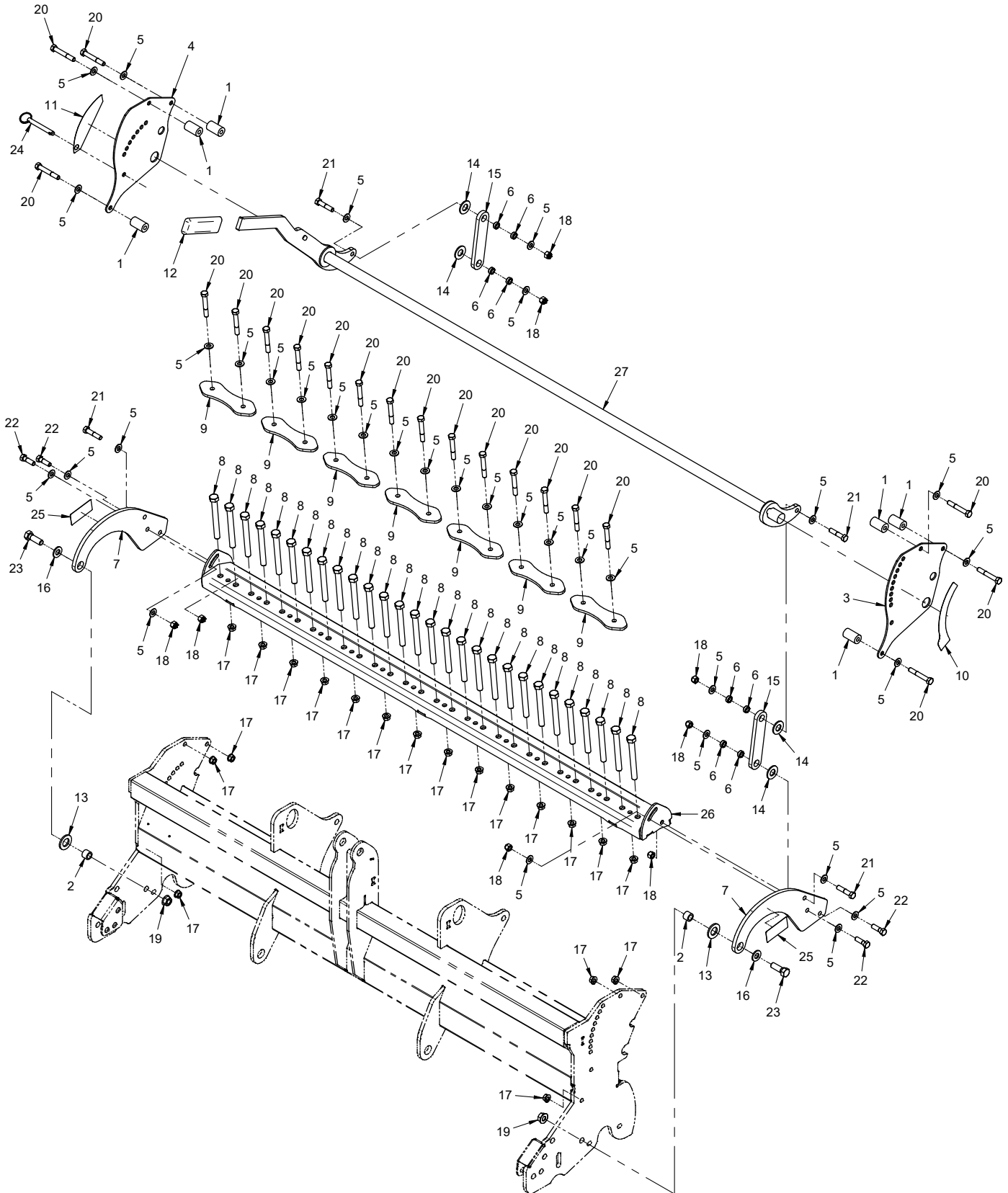
Rear Roller

REF.	PART NO.	DESCRIPTION	QTY.
1	44.0361	.BELTING, ROLLER WIPER	1
2	64.1871	.CLAMP, ROLLER WIPER	1
3	55.FB16020	.BEARING, FLANGE BLOCK 1-1/4"	2
4	95.06	.WASHER, FLAT 3/8 SAE	4
5	99.SF06	.NUT, SRF 3/8-16 USS	4
6	90.0612	.BOLT, 3/8-16 USS X 1-1/2	4
7	99.A05	.LOCKNUT, STOVER 5/16-18 USS	7
8	95.05	.WASHER, FLAT 5/16 SAE	14
9	90.0508	.BOLT, 5/16-18 USS X 1"	7
10	29.GF0002	.GREASE FTG, 1/4 SAE 90	2
11	80.0386	.ROLLER, REAR 7"	1

PARTS

ILLUSTRATED DRAWING

Spike Bar



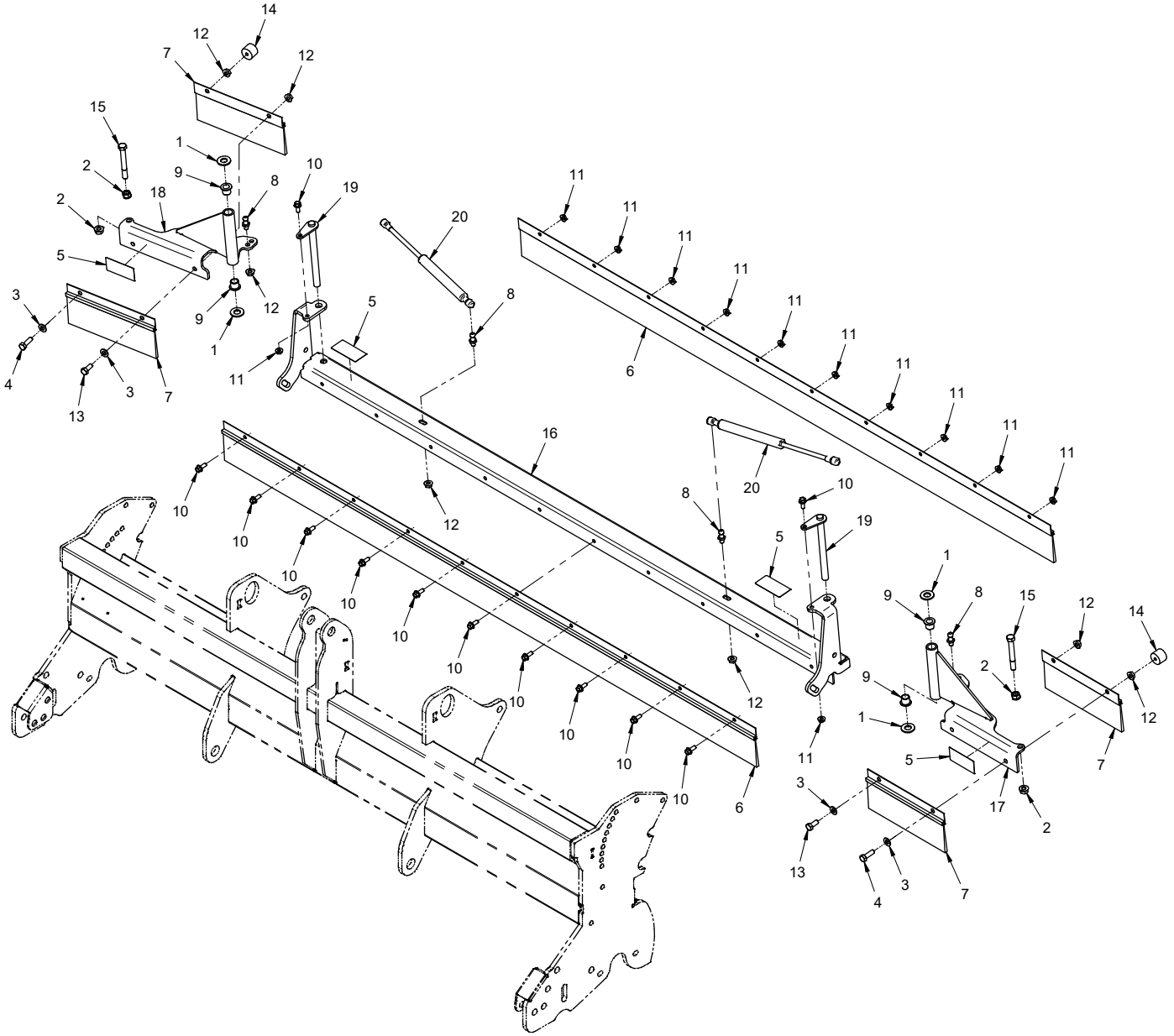
PARTS

Spike Bar

REF.	PART NO.	DESCRIPTION	QTY.
1	64.1873	.SPACER, SELECTOR PLATE	6
2	64.1894	.BUSHING, PIVOT SPIKE BAR	2
3	60.1261	.PLATE, BROOM SELECTOR	1
4	60.1262	.PLATE, SPIKE BAR SELECTOR	1
5	95.06	.WASHER, FLAT 3/8 SAE	34
6	64.0602	.BUSHING, 3/8 X 5/8 X .265	8
7	40.0397	.PLATE, SPIKE BAR MOUNT PIVOT	2
8	79.0095	.TINE, SPIKE	28
9	64.1872	.CLAMP, SPIKE TINES	7
10	00.0407	.DECAL, BRUSH HEIGHT ADJUST	1
11	00.0406	.DECAL, SPIKE BAR HEIGHT ADJUST	1
12	47.0377	.GRIP, HANDLE BLK FOAM 4-3/4 L	1
13	95.12	.WASHER, FLAT 3/4 SAE	2
14	95.10	.WASHER, FLAT 5/8 SAE	4
15	42.0575	.LINK, SPIKE BAR	2
16	95.08	.WASHER, FLAT 1/2 SAE	2
17	99.SF06	.NUT, SRF 3/8-16 USS	20
18	99.A06N	.LOCKNUT, NYLON 3/8-16	8
19	99.SF08	.NUT, SRF 1/2-13 USS	2
20	90.0620	.BOLT, 3/8-16 USS X 2-1/2	20
21	90.0614	.BOLT, 3/8-16 USS X 1-3/4	4
22	90.0610	.BOLT, 3/8-16 USS X 1-1/4	4
23	90.0812	.BOLT, 1/2-13 USS X 1-1/2	2
24	03.0011	.PIN, BALL 3/8 X 2-1/2	1
25	00.0218	.DECAL, WARNING PINCH POINT (Serial # 01001-01541)	2
25	00.0364	.DECAL, WARNING PINCH POINT (Serial # 01542-)	2
26	62.1431	.FRAME, SPIKE BAR	1
27	64.1875	.SHAFT, SPIKE BAR ROCKER	1

OPTIONS

ILLUSTRATED DRAWING 70.8156 Groomer Brush Frame & Wings



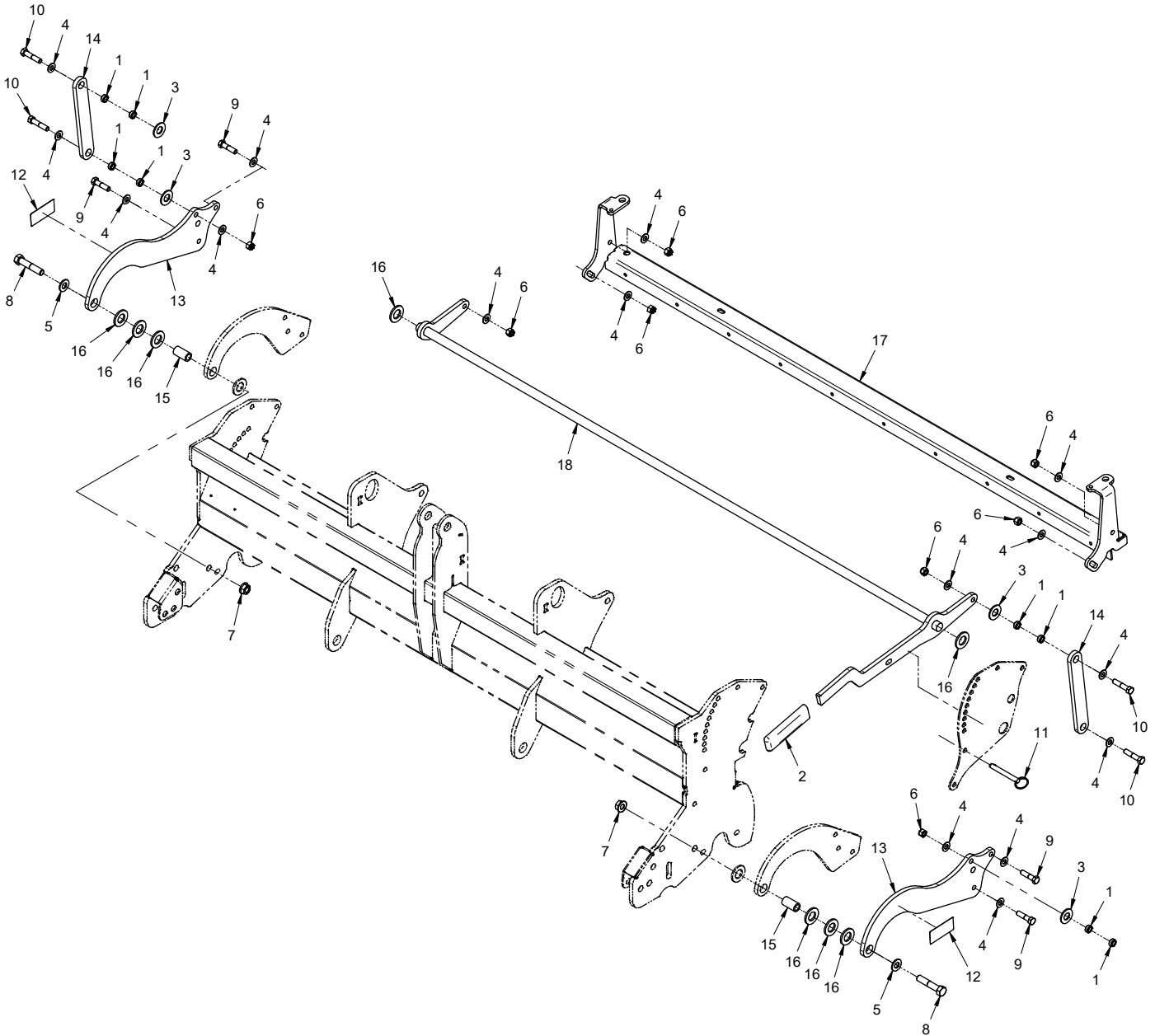
OPTIONS

70.8156 Groomer Brush Frame & Wings

REF.	PART NO.	DESCRIPTION	QTY.
1	95.08	WASHER, FLAT 1/2 SAE	4
2	99.SF06	NUT, SRF 3/8-16 USS	4
3	95.05	WASHER, FLAT 5/16 SAE	4
4	90.0508	BOLT, 5/16-18 USS X 1"	2
5	00.0364	DECAL, WARNING PINCH POINT	4
6	79.0099	BRUSH, GROOMER CENTER	2
7	79.0100	BRUSH, GROOMER WING	4
8	47.0225	STUD, BALL 10MM 5/16-18 THREAD	4
9	85.B0027	BUSHING, 1/2 ID X 5/8 OD X 5/8	4
10	99.SF0405-1	BOLT, SMF 1/4-20 X 5/8	12
11	99.SF04	NUT, SRF 1/4-20 USS	12
12	99.SF05	NUT, SRF 5/16-18 USS	8
13	90.0506	BOLT, 5/16-18 USS X 3/4"	2
14	05.0110	BUMPER, NEOPRENE 1" DIA.	2
15	90.0624	BOLT, 3/8-16 USS X 3	2
16	62.1432	FRAME, BRUSH MOUNT	1
17	62.1433	FRAME, BRUSH MOUNT WING LEFT	1
18	62.1434	FRAME, BRUSH MOUNT WING RIGHT	1
19	64.1881	PIN, RETAINER - BRUSH WING	2
20	47.0372	SHOCK, GAS SPRING	2

OPTIONS

ILLUSTRATED DRAWING 70.8156 Groomer Brush Adjustment Linkage



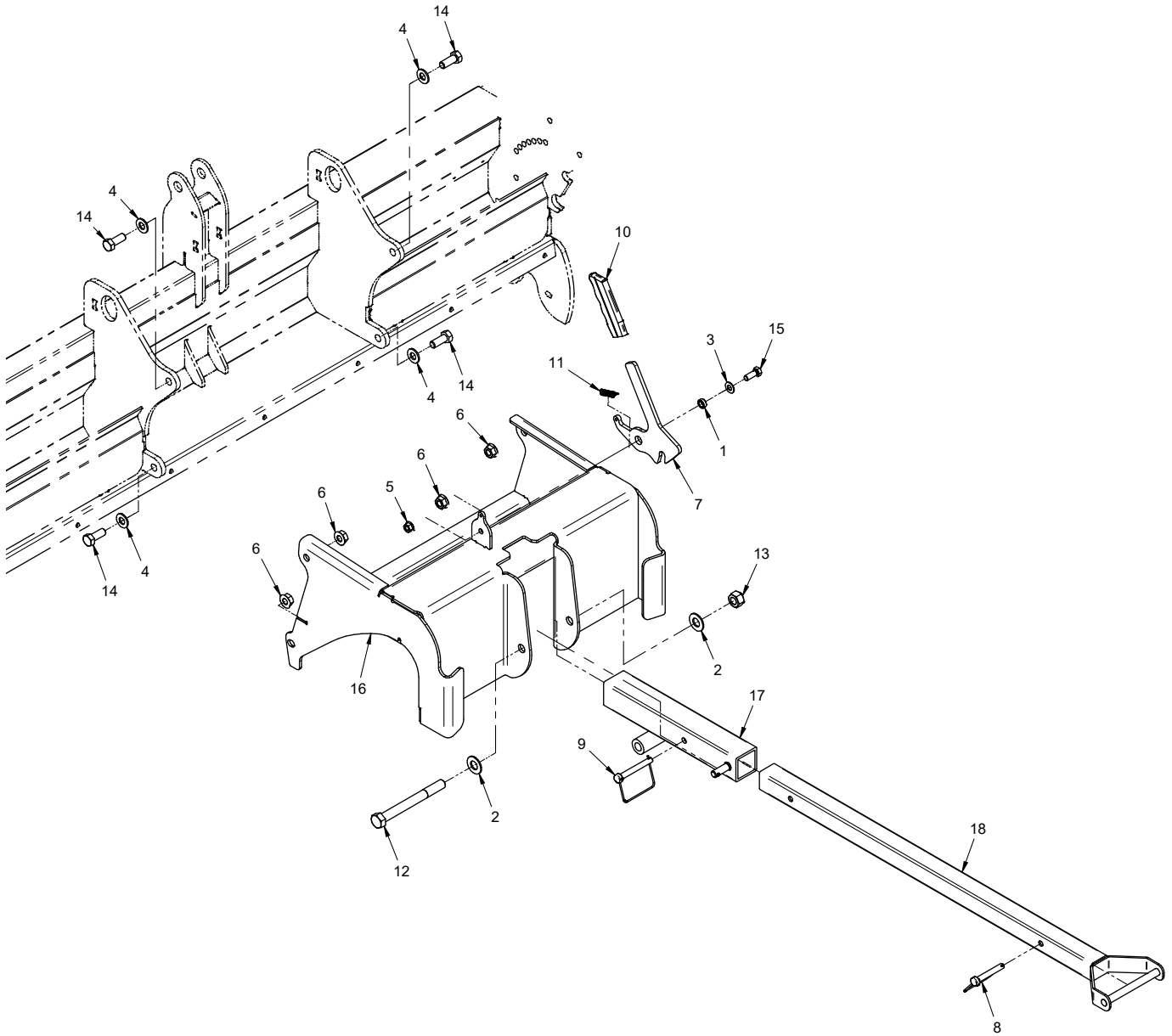
OPTIONS

70.8156 Groomer Brush Adjustment Linkage

REF.	PART NO.	DESCRIPTION	QTY.
1	64.0602	.BUSHING, 3/8 X 5/8 X .265	8
2	47.0377	.GRIP, HANDLE BLK FOAM 4-3/4 L	1
3	95.10	.WASHER, FLAT 5/8 SAE	4
4	95.06	.WASHER, FLAT 3/8 SAE	16
5	95.08	.WASHER, FLAT 1/2 SAE	2
6	99.A06N	.LOCKNUT, NYLON 3/8-16	8
7	99.SF08	.NUT, SRF 1/2-13 USS	2
8	90.0820	.BOLT, 1/2-13 USS X 2-1/2	2
9	90.0612	.BOLT, 3/8-16 USS X 1-1/2	4
10	90.0614	.BOLT, 3/8-16 USS X 1-3/4	4
11	03.0011	.PIN, BALL 3/8 X 2-1/2	1
12	00.0364	.DECAL, WARNING PINCH POINT	2
13	60.1263	.PLATE, BRUSH MOUNT PIVOT	2
14	42.0576	.LINK, BRUSH	2
15	64.1874	.BUSHING, PIVOT BRUSH	2
16	95.12	.WASHER, FLAT 3/4 SAE	8
17	62.1432	.FRAME, BRUSH MOUNT	1
18	64.1882	.SHAFT, BRUSH ROCKER	1

OPTIONS

ILLUSTRATED DRAWING 70.8154 Groomer Drag Frame & Arm



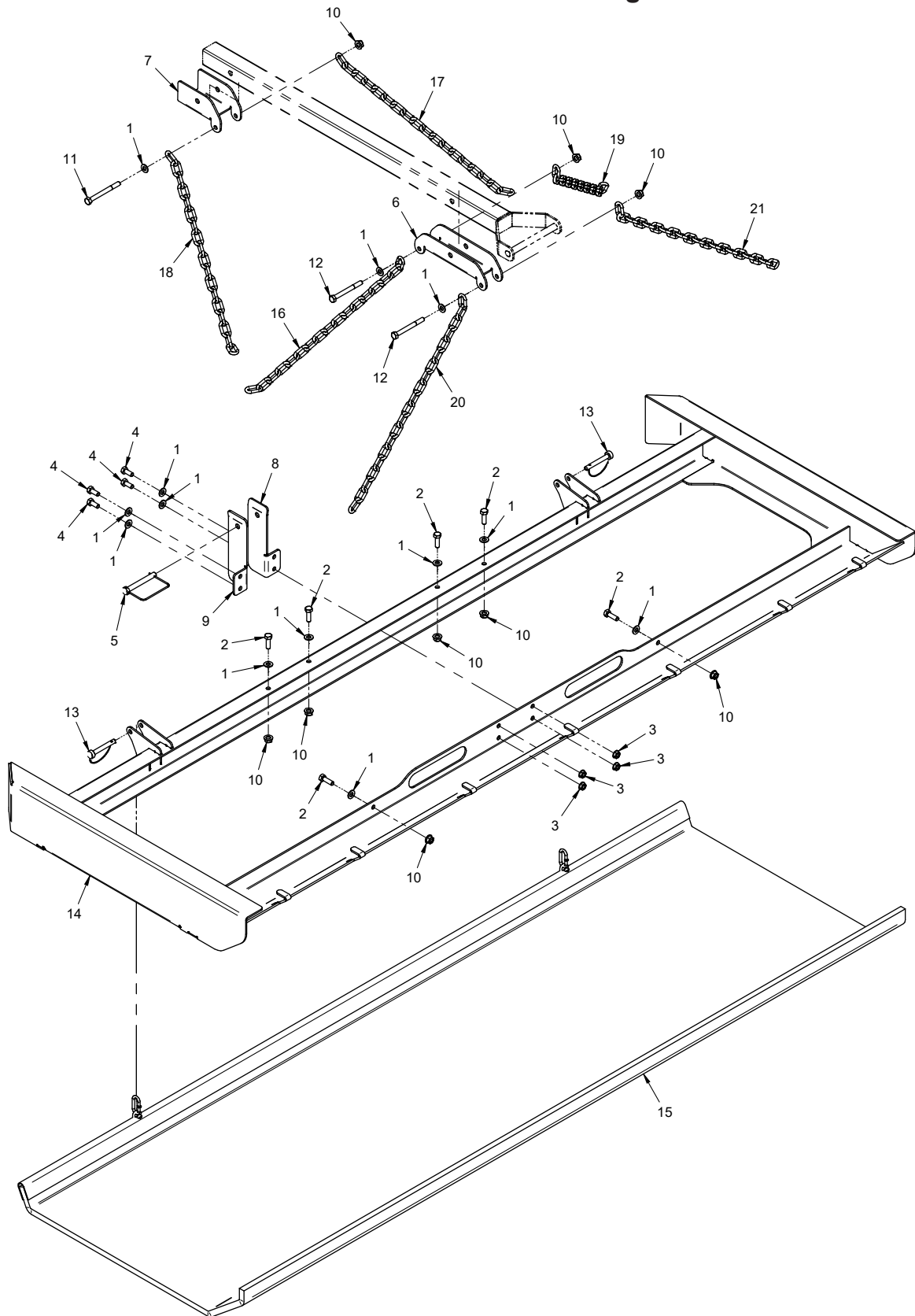
OPTIONS

70.8154 Groomer Drag Frame & Arm

REF.	PART NO.	DESCRIPTION	QTY.
1	64.0602	.BUSHING, 3/8 X 5/8 X .265	1
2	95.10	.WASHER, FLAT 5/8 SAE	2
3	95.06	.WASHER, FLAT 3/8 SAE	1
4	95.08	.WASHER, FLAT 1/2 SAE	4
5	99.SF06	.NUT, SRF 3/8-16 USS.	1
6	99.SF08	.NUT, SRF 1/2-13 USS.	4
7	64.1880	.LATCH, DRAG LIFT FRAME	1
8	03.0003	.PIN, SAFETY SNAP 3/8 X 2-1/2"	1
9	03.0015	.PIN, SAFETY SNAP 3/8 X 3"	1
10	47.0086	.GRIP, SLIP-ON HANDLE - BLACK	1
11	41.0112	.SPRING, EXT 3/8 X 1-1/2 LNG ZP	1
12	90.1048	.BOLT, 5/8-11 USS X 6	1
13	99.A10	.LOCKNUT, STOVER 5/8-11 USS.	1
14	90.0810	.BOLT, 1/2-13 USS X 1-1/4	4
15	90.0608	.BOLT, 3/8-16 USS X 1	1
16	62.1435	.FRAME, REAR DRAG HITCH	1
17	62.1436	.FRAME, DRAG LIFT	1
18	40.0398	.ARM, DRAG LIFT	1

OPTIONS

ILLUSTRATED DRAWING 70.8154 Groomer Steel Drag



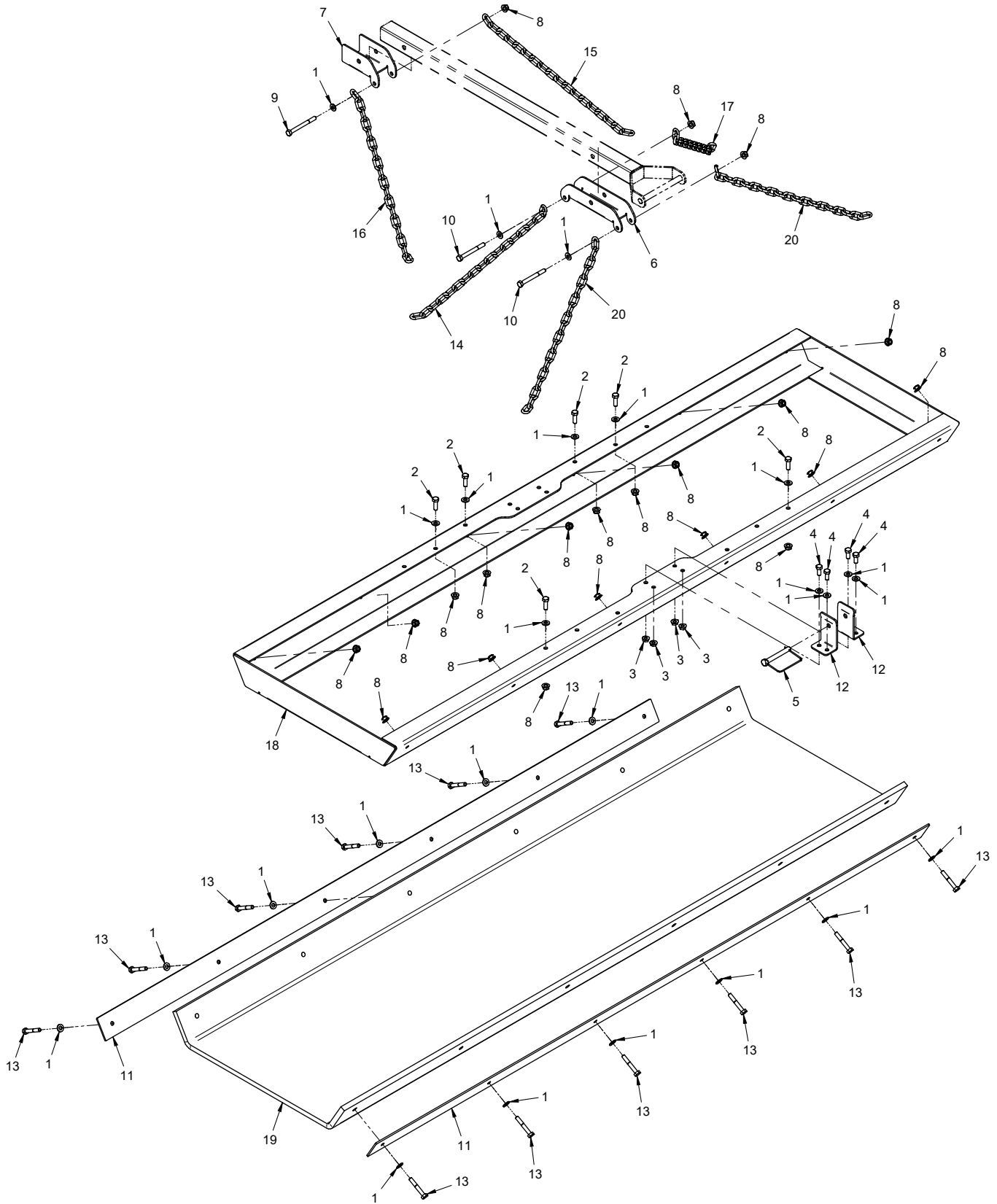
OPTIONS

70.8154 Groomer Steel Drag

REF.	PART NO.	DESCRIPTION	QTY.
1	95.05	WASHER, FLAT 5/16 SAE	13
2	90.0508	BOLT, 5/16-18 USS X 1"	6
3	99.SF05	NUT, SRF 5/16-18 USS	4
4	90.0506	BOLT, 5/16-18 USS X 3/4"	4
5	03.0015	PIN, SAFETY SNAP 3/8 X 3"	1
6	64.1876	BRACKET, DRAG LIFT	1
7	64.1895	BRACKET, DRAG PULL	1
8	64.1896	BRACKET, CHAIN DRAG LATCH RHT.	1
9	64.1897	BRACKET, CHAIN DRAG LATCH LFT	1
10	99.E0102	NUT, LOCKING FLANGE 5/16-18	9
11	90.0526	BOLT, 5/16-18 USS X 3-1/4"	1
12	90.0524	BOLT, 5/16-18 USS X 3"	2
13	03.0024	PIN, SAFETY SNAP 5/16 X 1-3/4	2
14	62.1437	FRAME, STEEL CHAIN DRAG	1
15	47.0374	DRAG, STEEL MAT - 72" X 26"	1
16	81.0158	CHAIN, 3/16 X 25" - 26 LINKS	2
17	81.0159	CHAIN, 3/16 X 16" - 18 LINKS	2
18	81.0159	CHAIN, 3/16 X 16" - 18 LINKS	2
19	81.0158	CHAIN, 3/16 X 25" - 26 LINKS	2
20	81.0158	CHAIN, 3/16 X 25" - 26 LINKS	1
21	81.0158	CHAIN, 3/16 X 25" - 26 LINKS	1

OPTIONS

ILLUSTRATED DRAWING 70.8154 Groomer Coco Mat Drag



OPTIONS

70.8154 Groomer Coco Mat Drag

REF.	PART NO.	DESCRIPTION	QTY.
1	95.05	WASHER, FLAT 5/16 SAE	25
2	90.0508	BOLT, 5/16-18 USS X 1"	6
3	99.SF05	NUT, SRF 5/16-18 USS	4
4	90.0506	BOLT, 5/16-18 USS X 3/4"	4
5	03.0015	PIN, SAFETY SNAP 3/8 X 3"	1
6	64.1876	BRACKET, DRAG LIFT	1
7	64.1895	BRACKET, DRAG PULL	1
8	99.E0102	NUT, LOCKING FLANGE 5/16-18	21
9	90.0526	BOLT, 5/16-18 USS X 3-1/4"	1
10	90.0524	BOLT, 5/16-18 USS X 3"	2
11	64.1898	CLAMP, COCOA DRAG MAT	2
12	64.1879	BRACKET, DRAG LATCH	2
13	90.0516	BOLT, 5/16-18 USS X 2"	12
14	81.0158	CHAIN, 3/16 X 25" - 26 LINKS	2
15	81.0159	CHAIN, 3/16 X 16" - 18 LINKS	2
16	81.0159	CHAIN, 3/16 X 16" - 18 LINKS	2
17	81.0158	CHAIN, 3/16 X 25" - 26 LINKS	2
18	62.1439	FRAME, COCOA MAT DRAG	1
19	47.0375	DRAG, COCOA MAT - 72" X 24"	1
20	81.0158	CHAIN, 3/16 X 25" - 26 LINKS	2