

Parts Manual

DG550

Ballpark Renovator





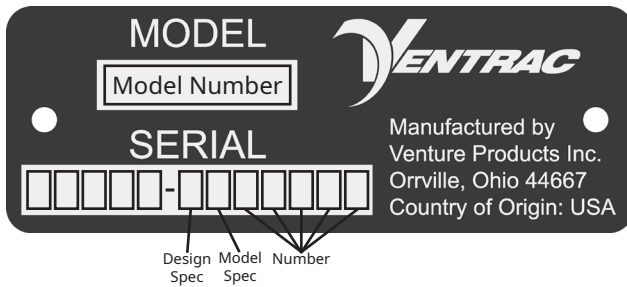
500 Venture Drive
Orrville Oh 44667
www.ventrac.com

[View all manuals](#)



Visit ventrac.com/manuals for the latest version of this parts manual. A downloadable operator's manual is also available.

Serial Number Description



Notes

- If any component requires replacement, use only original Ventrac replacement parts.
- When ordering new components, be sure to order all required safety decals. All current safety decals must be affixed to the replacement components prior to installation of the component.

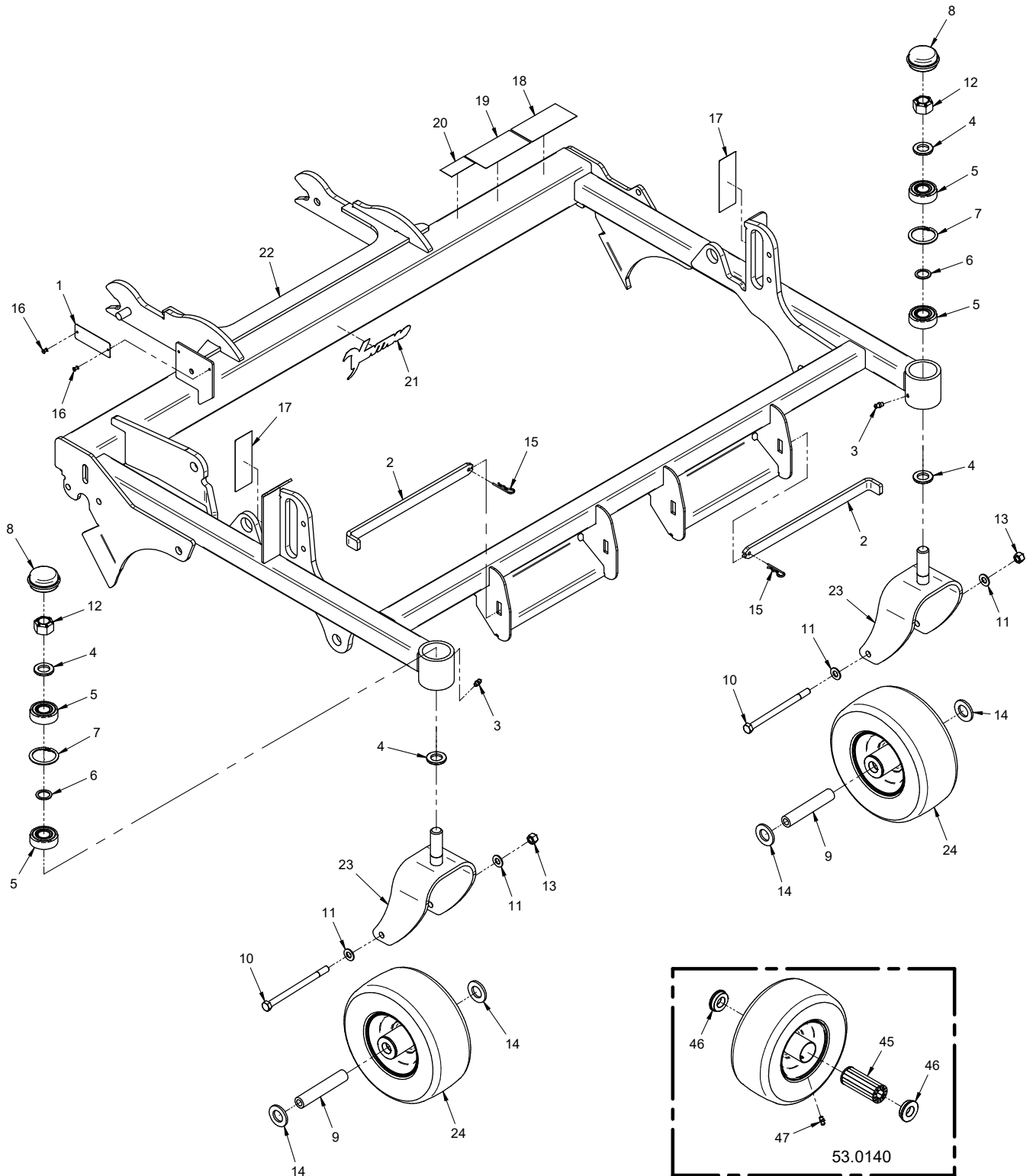
Venture Products Inc. reserves the right to make changes in design or specifications without obligation to make like changes on previously manufactured products.

TABLE OF CONTENTS

PARTS	PAGE 4
Main Frame & Front Wheels	4
Renovator Blades.....	6
Hydraulic Height Adjust.....	8
Scarifier Tines	10
Leveling Bar	12
OPTIONS	PAGE 14
70.4137 Mid Weight Bar 4500 Kit	14

PARTS

ILLUSTRATED DRAWING Main Frame & Front Wheels



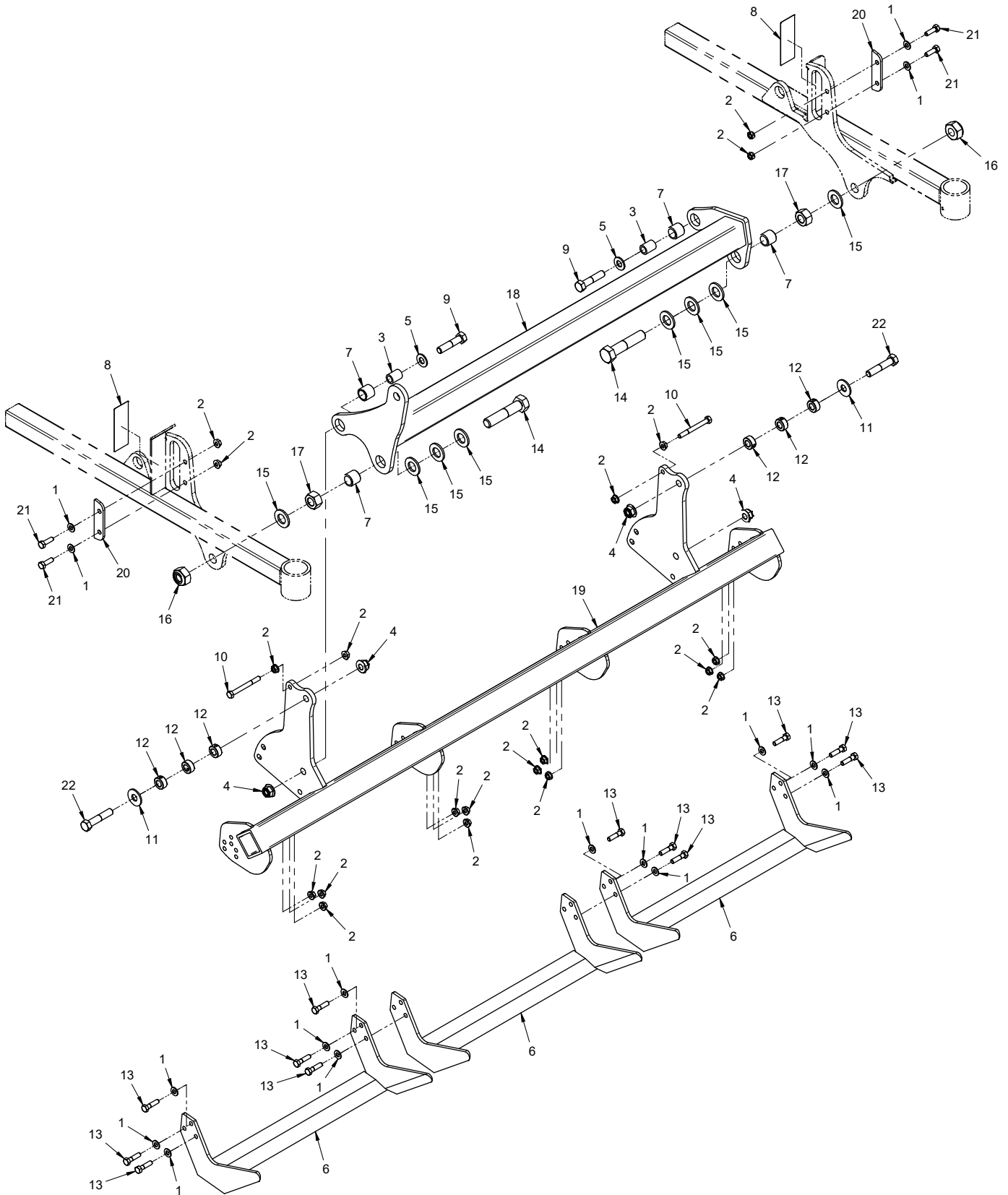
PARTS

Main Frame & Front Wheels

REF.	PART NO.	DESCRIPTION	QTY.
1	N/A	.PLATE, VENTRAC SERIAL NUMBER	1
2	64.1312	.PIN, WEIGHT RETAINER	2
3	29.GF0001	.GREASE FTG, 1/4 SAE ST	2
4	99.B0057-2	.WASHER, MACH 3/4 X 1-1/4 10 GA ZP	4
5	55.0023	.BEARING, BALL .75 ID X 1.78 OD	4
6	99.B0052	.SHIM, STEEL 3/4 X 1 X .062	2
7	04.0013	.SNAP RING, INT .062 X 1.75	2
8	53.0080	.DUST CAP, BEARING MOWER CASTER	2
9	50.0055	.TUBE, AXLE-WHEEL LM	2
10	90.0644	.BOLT, 3/8-16 USS X 5-1/2	2
11	95.06	.WASHER, FLAT 3/8 SAE	4
12	99.A12NF	.LOCKNUT, STOVER 3/4-16 SAE	2
13	99.A06N	.LOCKNUT, NYLON 3/8-16	2
14	95.12	.WASHER, FLAT 3/4 SAE	4
15	02.HP0313	.HAIRPIN, 3/32 X 1-5/8	2
16	04.0003	.RIVET, POP 1/8" X 3/8"	2
17	00.0401	.DECAL, CUTTING HEIGHT	2
18	00.0217	.DECAL, WARNING READ OWNERS MAN (Serial # 01001-01570)	1
18	00.0619	.DECAL, READ OPERATOR'S MANUAL(Serial # 01571-)	1
19	00.0220	.DECAL, GENERAL SAFETY (Serial # 01001-01570)	1
19	00.0632	.DECAL, MOVING PARTS HAZARD (Serial # 01571-)	1
20	00.0100	.DECAL, MADE IN USA	1
21	00.0382	.DECAL, VENTRAC	1
22	62.1442	.FRAME, CARRIER - DG550	1
23	50.0185	.SPINDLE, TIRE SWIVEL 9"	2
24	53.0140	.WHEEL, ASM 9 X 3.5 X4 FLATFREE	2
45	55.0071	.BEARING, ROLLER 3.25" LONG	1
46	55.0072	.BEARING, RETAINER 3/4"	2
47	29.GF0001	.GREASE FTG, 1/4 SAE ST	1

PARTS

ILLUSTRATED DRAWING Renovator Blades



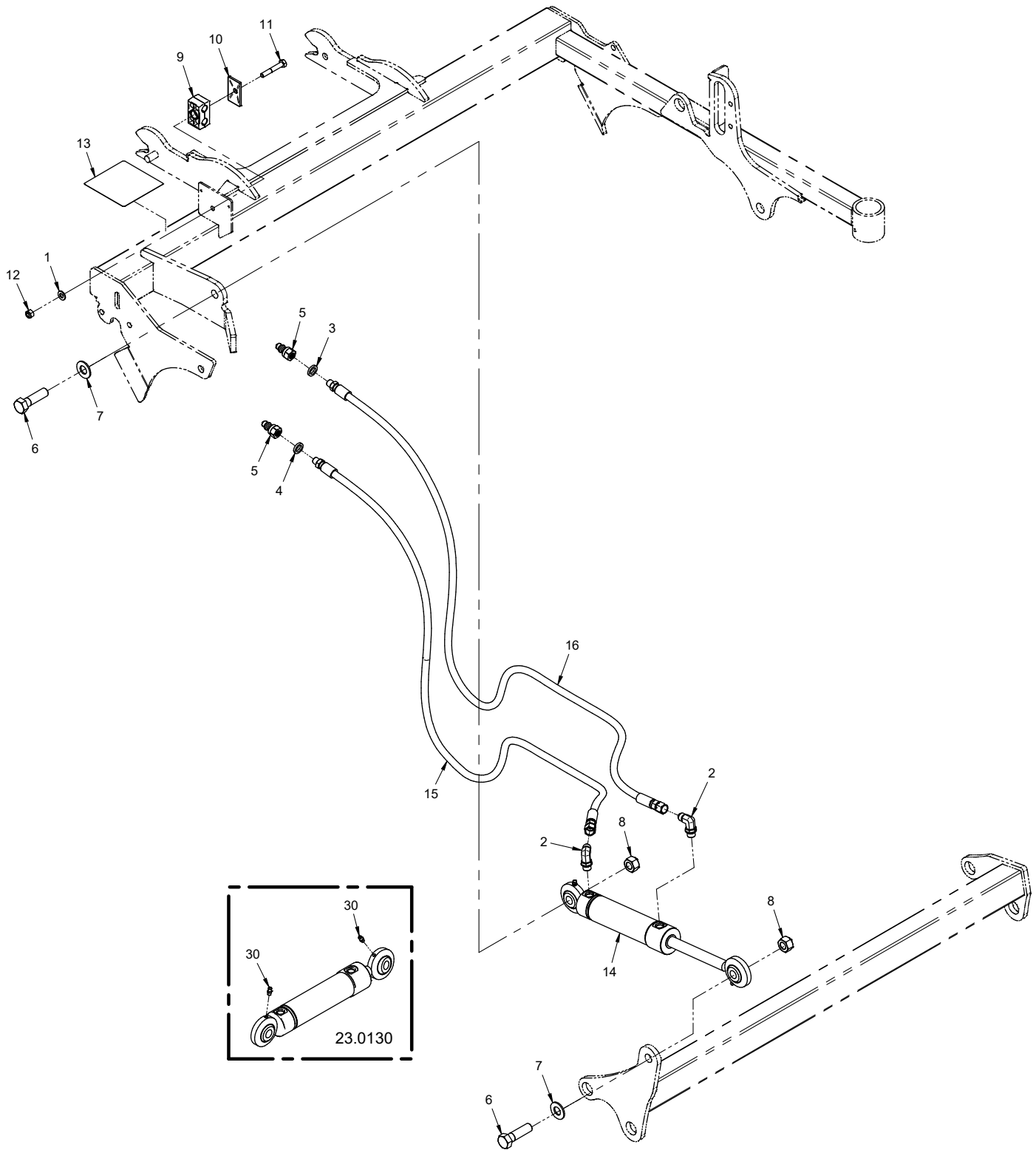
PARTS

Renovator Blades

REF.	PART NO.	DESCRIPTION	QTY.
1	95.05	WASHER, FLAT 5/16 SAE	16
2	99.SF05	NUT, SRF 5/16-18 USS	20
3	64.1889	BUSHING, PIVOT DG550	2
4	99.E0119	LOCKNUT, NYLON - FLANGE 1/2-13	4
5	95.08	WASHER, FLAT 1/2 SAE	2
6	79.0097	BLADE, CUTTING 18.50"	3
7	85.B0093	BUSHING, BRONZE SLEEVE	4
8	00.0401	DECAL, CUTTING HEIGHT	2
9	90.0818	BOLT, 1/2-13 USS X 2-1/4	2
10	90.0524	BOLT, 5/16-18 USS X 3"	2
11	94.08	WASHER, FLAT 1/2 USS	2
12	85.SC08	SET COLLAR, 1/2"	6
13	90.0510	BOLT, 5/16-18 USS X 1-1/4"	12
14	90.1228	BOLT, 3/4-10 USS X 3-1/2	2
15	95.12	WASHER, FLAT 3/4 SAE	8
16	99.E0115	NUT, JAM 3/4-10 NYLON LOCK WID	2
17	92.12	NUT, 3/4-10 USS	2
18	62.1444	FRAME, HEIGHT ADJUSTMENT PIVOT	1
19	62.1445	FRAME, CUTTER MOUNT	1
20	64.1884	PLATE, WEAR BAR	2
21	90.0508	BOLT, 5/16-18 USS X 1"	4
22	90.0820	BOLT, 1/2-13 USS X 2-1/2	2

PARTS

ILLUSTRATED DRAWING Hydraulic Height Adjust



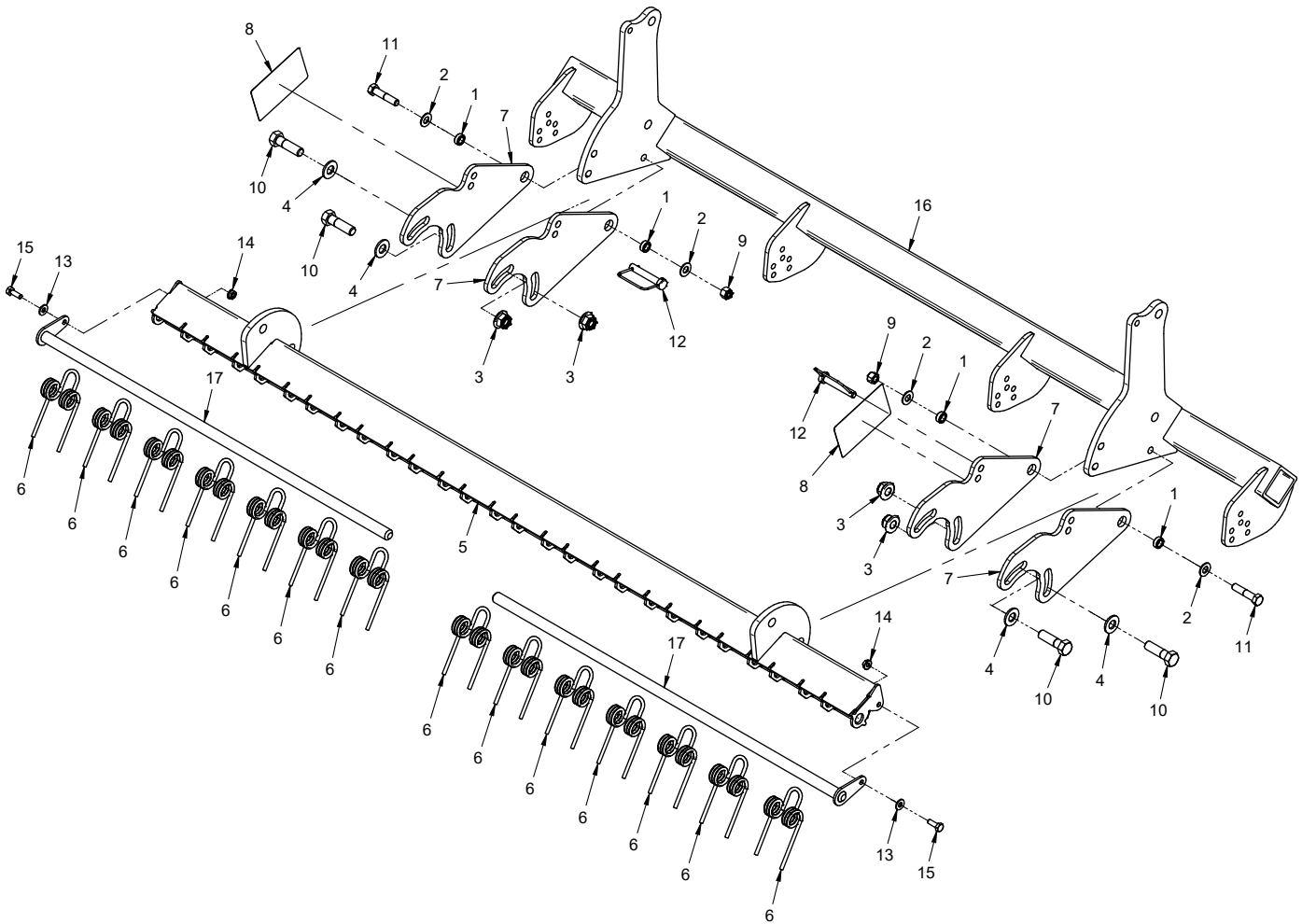
PARTS

Hydraulic Height Adjust

REF.	PART NO.	DESCRIPTION	QTY.
1	95.05	WASHER, FLAT 5/16 SAE	1
2	25.6801-06-06	FITTING, 90 ME 3/8 X 3/8	2
3	05.0117	WASHER, .544 ID X .817 X .14 YEL	1
4	05.0116	WASHER, .544 ID X .817 X .14 RED	1
5	23.0104	COUPLER, QUICK MALE 1/4	2
6	90.1018	BOLT, 5/8-11 USS X 2-1/4	2
7	95.10	WASHER, FLAT 5/8 SAE	2
8	99.A10	LOCKNUT, STOVER 5/8-11 USS	2
9	44.0256	CLAMP, HYD HOSE 12.7MM ID 2 CAVITY (SET OF 2)	1
10	44.0229	COVER PLATE, GROUP 2D (2 CAVITY)	1
11	90.0516	BOLT, 5/16-18 USS X 2"	1
12	99.A05N	LOCKNUT, NYLON 5/16-18 USS	1
13	00.0103	DECAL, HAZARD - HIGH PRESS. FLUID (Serial # 01001-01570)	1
13	00.0621	DECAL, HIGH PRESSURE FLUID HAZARD (Serial # 01571-)	1
14	23.0130	CYLINDER, 1-1/2" X 5"	1
15	20.0169	HOSE, 1/4X38.00 SAE 100R17 AR	1
16	20.0209	HOSE, 1/4X45.00 SAE 100R17 AR	1
30	29.GF0001	GREASE FTG, 1/4 SAE ST	2

PARTS

ILLUSTRATED DRAWING Scarifier Tines



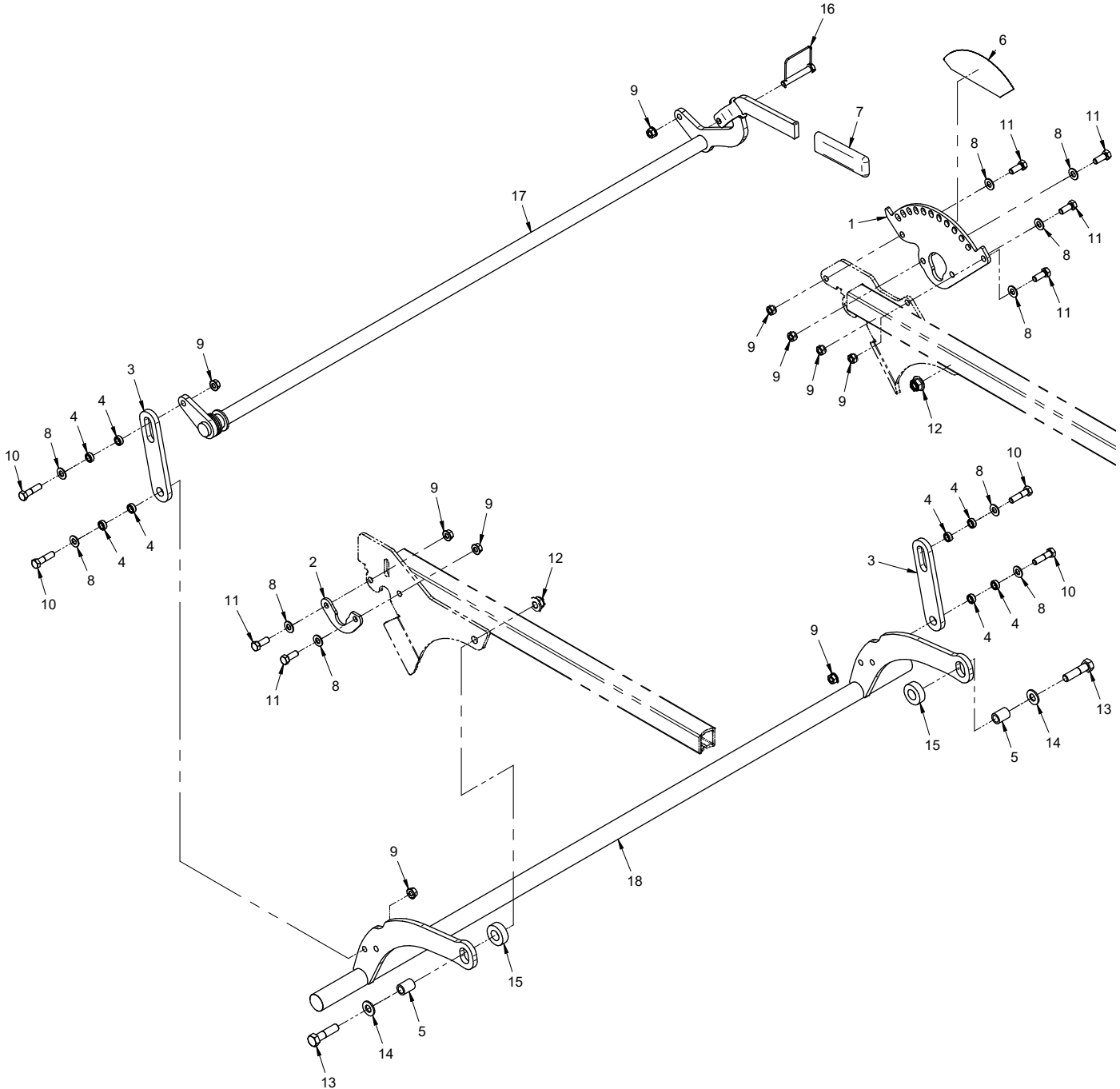
PARTS

Scarifier Tines

REF.	PART NO.	DESCRIPTION	QTY.
1	64.0602	.BUSHING, 3/8 X 5/8 X .265	4
2	95.06	.WASHER, FLAT 3/8 SAE	4
3	99.E0119	.LOCKNUT, NYLON - FLANGE 1/2-13	4
4	95.08	.WASHER, FLAT 1/2 SAE	4
5	62.1443	.FRAME, SCARIFIER TINE MOUNT	1
6	79.0101	.TINE, SCARIFIER SPRING	14
7	64.1887	.PLATE, SCARIFIER ADJUSTMENT	4
8	00.0402	.DECAL, SCARIFIER ADJUSTMENT	2
9	99.A06N	.LOCKNUT, NYLON 3/8-16 USS	2
10	90.0814	.BOLT, 1/2-13 USS X 1-3/4	4
11	90.0614	.BOLT, 3/8-16 USS X 1-3/4	2
12	03.0001	.PIN, SAFETY SNAP 3/8 X 1-3/4"	2
13	95.04	.WASHER, FLAT 1/4 SAE	2
14	99.SF04	.NUT, SRF 1/4-20 USS	2
15	90.0406	.BOLT, 1/4-20 USS X 3/4"	2
16	62.1445	.FRAME, CUTTER MOUNT	1
17	64.1888	.SHAFT, SCARIFIER TINE RETAINER	2

PARTS

ILLUSTRATED DRAWING Leveling Bar



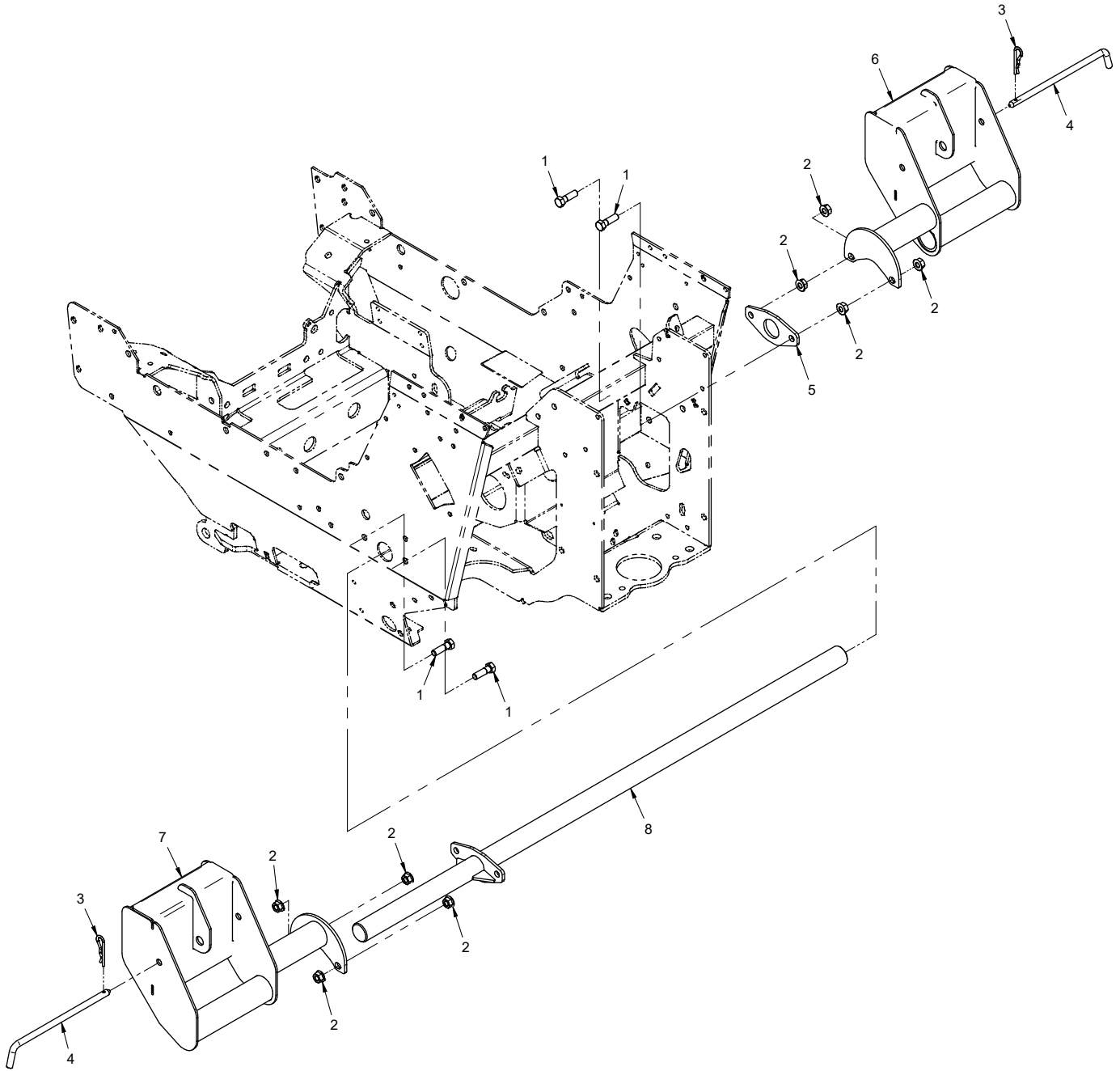
PARTS

Leveling Bar

REF.	PART NO.	DESCRIPTION	QTY.
1	64.1893	.PLATE, LEVELING BAR ADJUSTMENT	1
2	64.1886	.BRACKET, LEVEL SHAFT RETAINER	1
3	42.0577	.LINK, LEVELING BAR LIFT	2
4	64.0602	.BUSHING, 3/8 X 5/8 X .265	8
5	64.1889	.BUSHING, PIVOT DG550	2
6	00.0405	.DECAL, DRAG BAR HEIGHT ADJUST.	1
7	47.0377	.GRIP, HANDLE BLK FOAM 4-3/4 L	1
8	95.06	.WASHER, FLAT 3/8 SAE	10
9	99.SF06	.NUT, SRF 3/8-16 USS	10
10	90.0612	.BOLT, 3/8-16 USS X 1-1/2	4
11	90.0608	.BOLT, 3/8-16 USS X 1	6
12	99.E0119	.LOCKNUT, NYLON - FLANGE 1/2-13	2
13	90.0816	.BOLT, 1/2-13 USS X 2	2
14	95.08	.WASHER, FLAT 1/2 SAE	2
15	05.0159	.WASHER, NYLON .755IDX1.5ODX.5L	2
16	03.0003	.PIN, SAFETY SNAP 3/8 X 2-1/2"	1
17	62.1441	.SHAFT, LEVELING BAR ADJUSTMENT	1
18	62.1440	.FRAME, LEVELING BAR - DG550	1

OPTIONS

ILLUSTRATED DRAWING 70.4137 Mid Weight Bar 4500 Kit



OPTIONS

70.4137 Mid Weight Bar 4500 Kit

REF.	PART NO.	DESCRIPTION	QTY.
1	90.0610	.BOLT, 3/8-16 USS X 1-1/4	4
2	99.SF06	.NUT, SRF 3/8-16 USS	8
3	02.HP0416	.HAIRPIN, 1/8 X 2	2
4	64.0761	.PIN, WEIGHT SECURE 7.3" USABLE	2
5	64.1029	.PLATE, REAR CLAMP CROSSBAR MT	1
6	62.1449	.FRAME, WEIGHT MID RIGHT	1
7	62.1448	.FRAME, WEIGHT MID LEFT	1
8	42.0455	.SHAFT, REAR ANCHOR MOUNT	1