

Parts Manual

KL480

Tiller





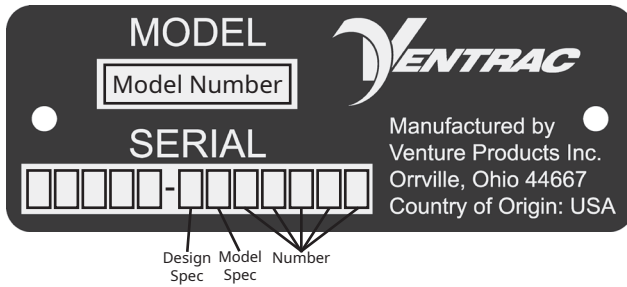
500 Venture Drive
Orrville Oh 44667
www.ventrac.com

View all manuals



Visit ventrac.com/manuals for the latest version of this parts manual. A downloadable operator's manual is also available.

Serial Number Description



Serial Plate Location



Notes

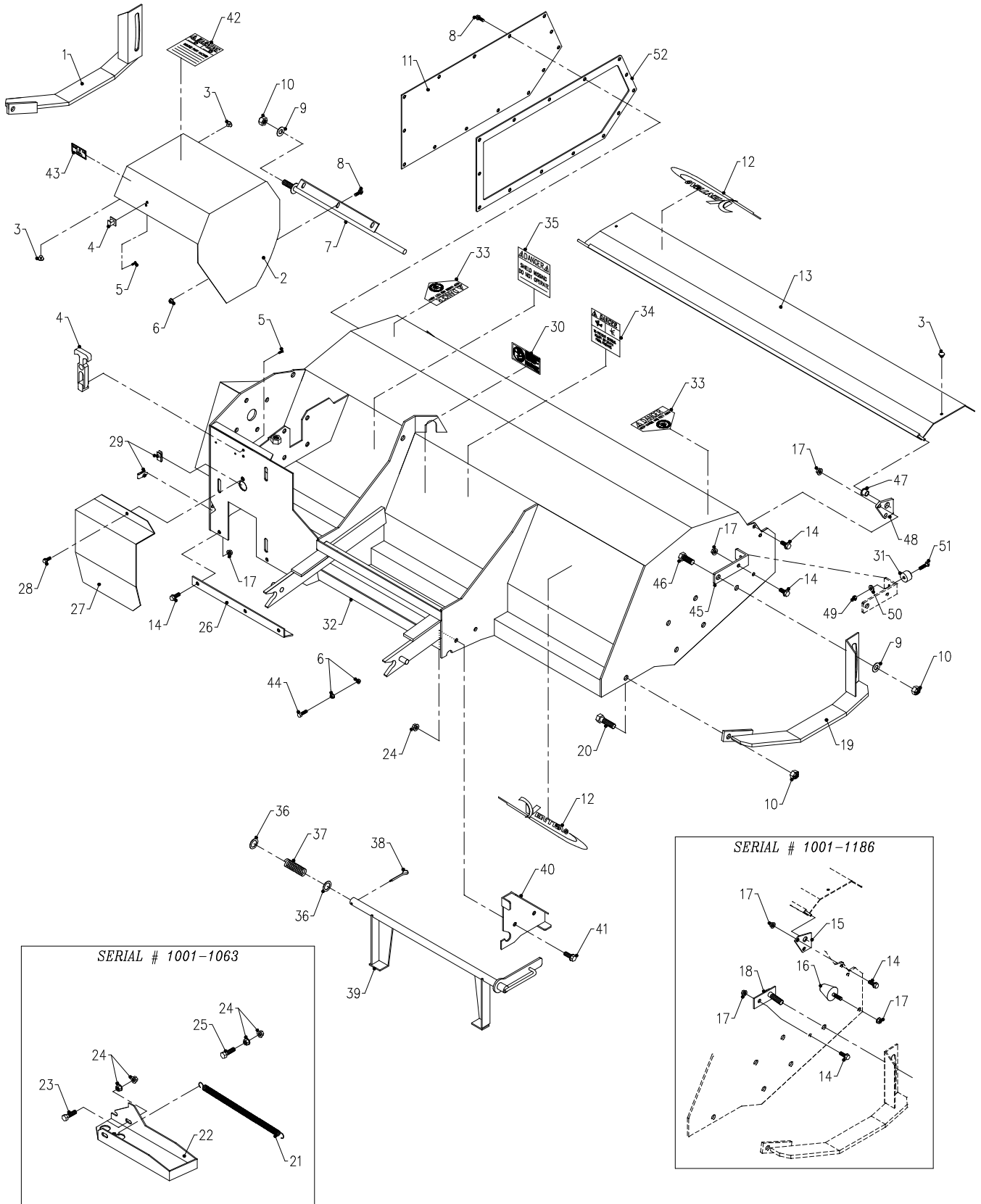
- If any component requires replacement, use only original Ventrac replacement parts.
- When ordering new components, be sure to order all required safety decals. All current safety decals must be affixed to the replacement components prior to installation of the component.

TABLE OF CONTENTS

PARTS	PAGE 4
Main Frame & Shields	4
Gearbox & Belt Drive	6
Rotor & Chain Drive	8

PARTS

ILLUSTRATED DRAWING Main Frame & Shields



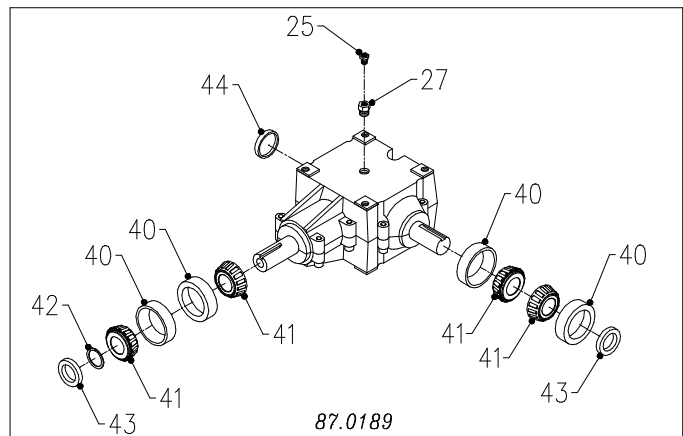
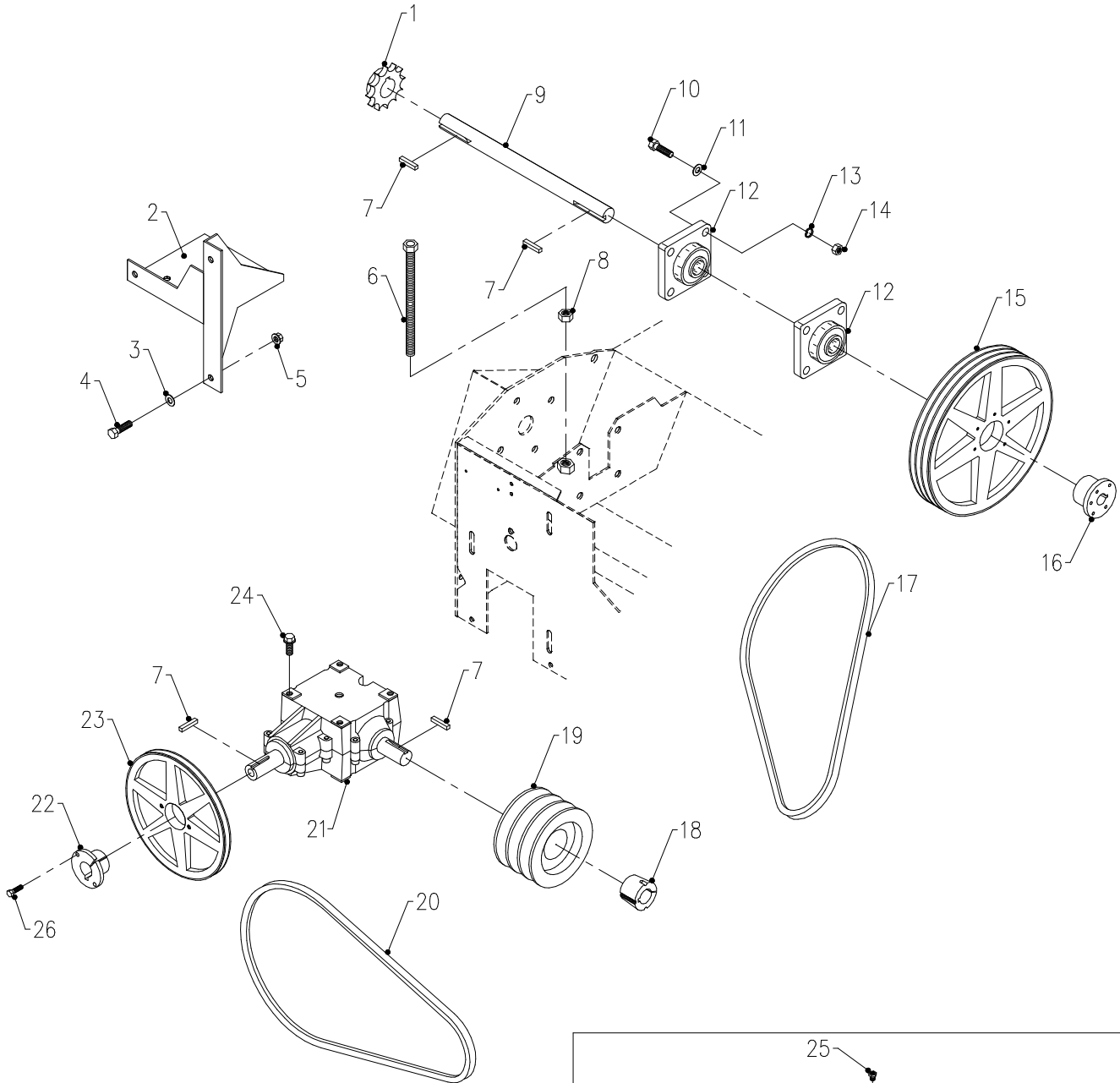
PARTS

Main Frame & Shields

REF.	PART NO.	DESCRIPTION	QTY.
1	62.0896	.SHOE, SKID LEFT KL480	1
2	60.0786	.COVER, BELTS & GEARBOX KL480	1
3	05.0062	.BUMPER, RUBBER SOLID STEM	6
4	47.0127	.LATCH, RUBBER DRAW T-HANDLE	1
5	99.K0072	.MACHINE SCREW, 10-24 X 1/2 ZP	3
6	99.SF04	.NUT, SF 1/4-20 USS	5
7	42.0434	.SHAFT, PIVOT - COVER KL480	1
8	99.SF0404-1	.BOLT, SF 1/4-20 X 1/2 W/RUBBER	17
9	95.08	.WASHER, FLAT 1/2 SAE	3
10	99.A08	.LOCKNUT, STOVER 1/2-13 USS	5
11	60.0787	.COVER, CHAIN KL480	1
12	00.0189	.DECAL, VENTRAC ORBITAL	2
13	60.0785	.FLAP, DIRT KL480	1
14	99.SF0506	.BOLT, SF 5/16-18 USS X 3/4	9
15	64.0907	.BRACKET, DIRT FLAP MOUNT KL480 (Serial # 1001-1186)	4
16	05.0061	.BUMPER, RUBBER CONICAL (Serial # 1001-1186)	2
17	99.SF05	.NUT, SF 5/16-18 USS	11
18	64.0911	.BRACKET, SHOE ANCHOR KL480 (Serial # 1001-1186)	2
19	62.0895	.SHOE, SKID RIGHT KL480	1
20	90.0808	.BOLT, 1/2-13 USS X 1	2
21	41.0045	.SPRING, 3/4 X 12 EXT .092-WIRE (Serial # 1001-1063)	1
22	60.0789	.LEG, PARK KL480 (Serial # 1001-1063)	1
23	90.0612	.BOLT, 3/8-16 USS X 1 1/2	3
24	99.SF06	.NUT, SF 3/8-16 USS	8
25	90.0616	.BOLT, 3/8-16 USS X 2	1
26	64.0906	.STIFFENER, HOUSING KL480	1
27	60.0788	.COVER, BELT KL480	1
28	99.SF0405-1	.BOLT, SF 1/4-20 X 5/8 W/RUBBER	2
29	99.E0046	.NUT, "U" 1/4-20 EXTRUDED	2
30	00.0217	.DECAL, WARNING READ OWNERS MAN (Serial # 1001-1928)	1
30	00.0619	.DECAL, READ OPERATOR'S MANUAL (Serial # 1929 -)	1
31	05.0095	.BUMPER, RUBBER CYLINDRICAL (Serial # 1187 -)	2
32	62.0893	.FRAME, MAIN KL480	1
33	00.0123	.DECAL, KEEP HAND AND FEET AWAY (Serial # 1001-1928)	2
33	00.0703	.DECAL, CUTTING/DISMEMBERMENT HAZARD (Serial # 1929 -)	2
34	00.0102	.DECAL, DANGER-PINCHING HAZARD (Serial # 1001-1928)	1
34	00.0620	.DECAL, PINCHING OR CRUSHING HAZARD (Serial # 1929 -)	1
35	00.0062	.DECAL, DANGER SHIELD MISSING (Serial # 1001-1928)	1
35	00.0625	.DECAL, SHIELD MISSING (Serial # 1929 -)	1
36	95.12	.WASHER, FLAT 3/4 SAE	2
37	41.0073	.SPRING, COMP 13/16 ID X 2-1/2L (Serial # 1064 -)	1
38	02.CP0508	.COTTER PIN, 5/32 X 1	1
39	62.1003	.STAND, JACK KL480 (SERIAL # 1064 -)	1
40	60.0880	.PLATE, JACK STAND MOUNTING (Serial # 1064 -)	1
41	99.SF0606	.BOLT, SF 3/8-16 USS X 3/4	2
42	00.0101	.DECAL, HAZARD-MOVING PART (Serial # 1001-1928)	1
42	00.0626	.DECAL, ENTANGLEMENT HAZARD (Serial # 1929 -)	1
43	00.0100	.DECAL, MADE IN USA	1
44	90.0414	.BOLT, 1/4-20 USS X 1 3/4	1
45	64.1372	.BRACKET, BUMPER (SERIAL # 1187 -)	2
46	90.0810	.BOLT, 1/2-13 USS X 1 1/4	2
47	85.B0027	.BUSHING, 1/2 ID X 5/8 OD X 5/8 (Serial # 1187 -)	2
48	64.1373	.MOUNT, DIRT FLAP (Serial # 1187 -)	2
49	99.A04	.LOCKNUT, STOVER 1/4-20 USS	2
50	95.04	.WASHER, FLAT 1/4 SAE	2
51	90.0408	.BOLT, 1/4-20 USS X 1	2
52	44.0268	.GASKET, OIL SEAL (Serial # 1234-)	1

PARTS

ILLUSTRATED DRAWING Gearbox & Belt Drive



87.0189

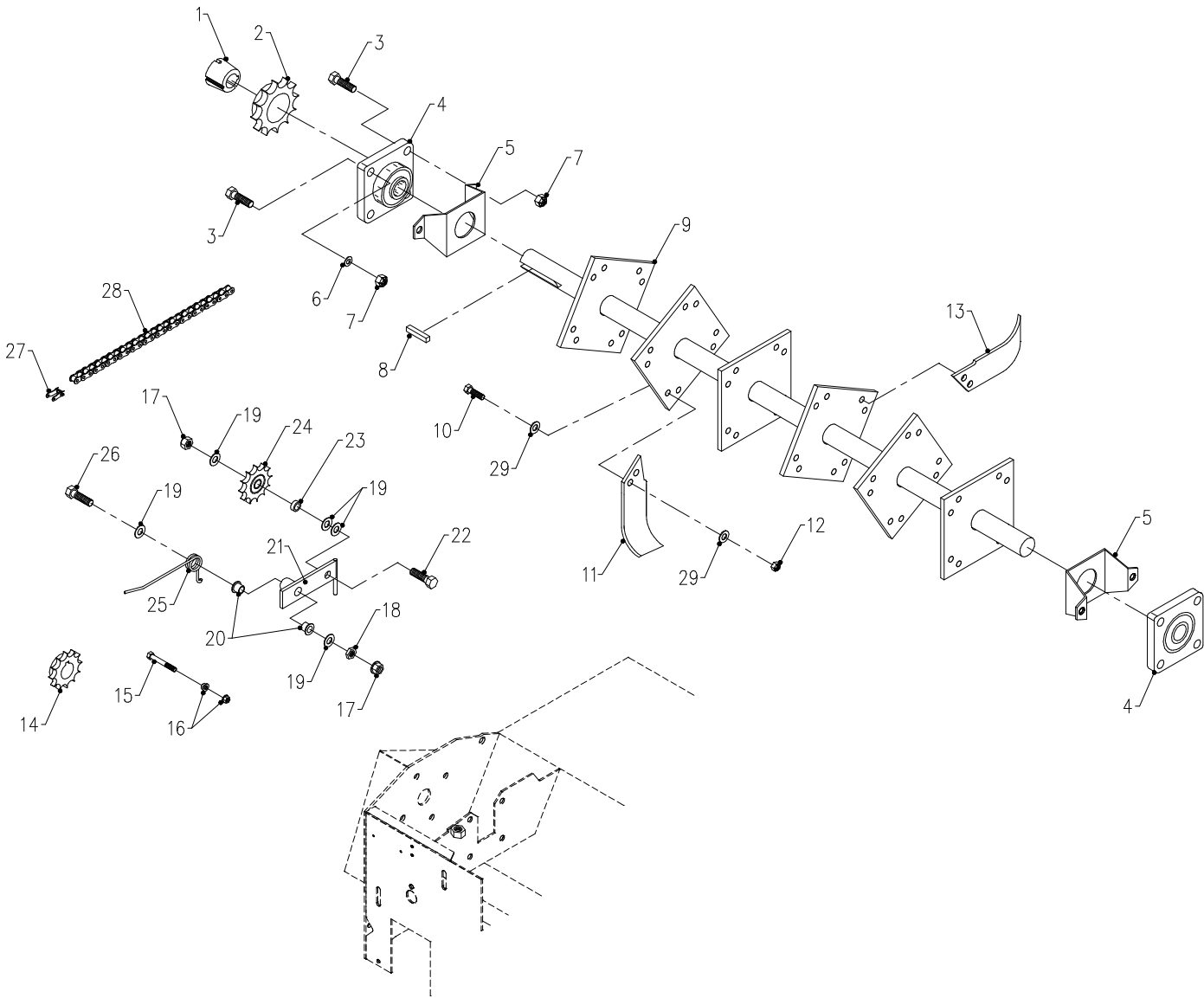
PARTS

Gearbox & Belt Drive

REF.	PART NO.	DESCRIPTION	QTY.
1	83.H800920	.SPROCKET,#80 9-T HRD 1-1/4 BOR	1
2	62.0894	.PLATE, GEARBOX MOUNT KL480	1
3	95.06	.WASHER, FLAT 3/8 SAE	3
4	90.0606	.BOLT, 3/8-16 USS X 3/4	3
5	99.SF06	.NUT, SF 3/8-16 USS	3
6	90.0864-4	.BOLT, 1/2-13 X 8 304SS	1
7	85.K0410	.KEY, 1/4 X 1 1/4	4
8	92.08	.NUT, 1/2-13 USS	1
9	80.0311	.SHAFT, JACK KL480	1
10	90.0712	.BOLT, 7/16-14 USS X 1 1/2	8
11	95.07	.WASHER, FLAT 7/16 SAE	8
12	55.FB22020S	.BEARING, FLANGE 1-1/4S	2
13	96.07	.WASHER, LOCK 7/16	8
14	92.07	.NUT, 7/16-14 USS	8
15	83.3TB94	.PULLEY, 3-GROOVE X 9.4" DIA	1
16	83.Q120	.BUSHING, 1 1/4" Q1	1
17	81.BX035	.BELT, BX35	1
18	83.121016	.BUSHING, 1210 X 1" TAPERD LOCK	1
19	83.3TB36TB	.PULLEY, 3B 3.6" TB-BUSHING	1
20	81.B066	.BELT, B66	1
21	87.0189	.GEARBOX, 1" SHAFT 2:1 CW/CCW (SERIAL # 1001-1168)	1
21	87.0219	.GEARBOX, CW/CCW 1" SHAFT 2:1 (SERIAL # 1169-1228)	1
21	87.0189	.GEARBOX, 1" SHAFT 2:1 CW/CCW (SERIAL # 1229-)	1
22	83.H16S	.BUSHING, 1" SPLIT 1/4" KEY	1
23	83.BK80H	.PULLEY, 8" H-BUSH	1
24	99.SF0608	.BOLT, SF 3/8-16 USS X 1	4
25	29.0090	.PIPE, BREATHER PLUG 1/8	1
26	90.0406	.BOLT, 1/4-20 USS X 3/4	2
27	29.B0204G	.PIPE, BUSHING 1/8 X 1/4 GALV	1
40	55.0076	.BEARING, CUP 1.980	4
41	55.0075	.BEARING, CONE 1.000	4
42	04.0026	.RETAINING RING, EXT 1.000 SHFT.	1
43	89.0075	.SEAL, OIL	2
44	89.0081	.SEAL, END CAP 1.50-25	1

PARTS

ILLUSTRATED DRAWING Rotor & Chain Drive



PARTS

Rotor & Chain Drive

REF.	PART NO.	DESCRIPTION	QTY.
1	83.161524	.BUSHING, 1615 X 1-1/2 TAPERLOC.	1
2	83.H80TB15	.SPROCKET, #80 15-T HRD	1
3	90.0812	.BOLT, 1/2-13 USS X 1 1/2.	8
4	55.FB22024	.BEARING, FLANGE BLOCK 1 1/2.	2
5	64.0908	.PROTECTOR, 1-1/2 BEARING KL	2
6	95.08	.WASHER, FLAT 1/2 SAE	4
7	99.A08	.LOCKNUT, STOVER 1/2-13 USS	8
8	85.K0610	.KEY, 3/8 X 1 1/4.	1
9	80.0310	.SHAFT, MAIN ROTOR KL480	1
10	91.0712-8	.BOLT, 7/16-20 SAE X 1-1/2 GRD8	48
11	79.0049-L	.TINE, TILLER L.H.	12
12	99.A07NFN	.LOCKNUT, NYLON 7/16-20 SAE	48
13	79.0049-R	.TINE, TILLER R. H.	12
14	83.H800920	.SPROCKET,#80 9-T HRD 1-1/4 BOR	1
15	90.0514	.BOLT, 5/16-18 USS X 1 3/4.	1
16	99.SF05	.NUT, SF 5/16-18 USS	2
17	99.SF08	.NUT, SF 1/2-13 USS	2
18	99.E0058	.NUT, JAM 1/2-13 USS	1
19	95.08	.WASHER, FLAT 1/2 SAE	5
20	85.B0027	.BUSHING, 1/2 ID X 5/8 OD X 5/8.	2
21	40.0290	.IDLER ARM, CHAIN KL480	1
22	90.0814	.BOLT, 1/2-13 USS X 1 3/4.	1
23	85.B0015	.BUSHING, 1/2 ID X 3/4 OD X 1/2.	1
24	83.8011012	.SPROCKET, IDLER #80 11-T.	1
25	41.0066	.SPRING, SINGLE TORSION LH	1
26	90.0824	.BOLT, 1/2-13 USS X 3.	1
27	81.0059	.LINK, CONN #80.	1
28	81.0138	.CHAIN, ROLLER #80 X 44" KL480	1
29	95.07	.WASHER, FLAT 7/16 SAE	96