

KW452

Weather Cab





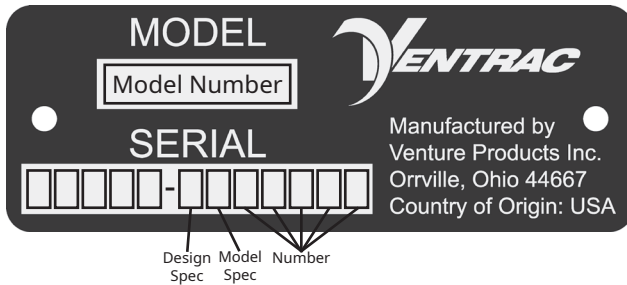
500 Venture Drive
Orrville Oh 44667
www.ventrac.com

View all manuals



Visit ventrac.com/manuals for the latest version of this parts manual. A downloadable operator's manual is also available.

Serial Number Description



Serial Plate Location



Notes

- If any component requires replacement, use only original Ventrac replacement parts.
- When ordering new components, be sure to order all required safety decals. All current safety decals must be affixed to the replacement components prior to installation of the component.

TABLE OF CONTENTS

PARTS	PAGE 4
Wiring Diagram Reference Key.....	4
Wiring Diagram	5
Wire Harness & Fuse Panel.....	6
Cab Frame & Mount.....	8
Cab Roof Mount.....	10
Main Switch Panel, Cover Plates, & Components	12
Front & Rear Work Lights.....	14
Canvas Bellows & Column Covers	16
Front Windshield & Windshield Wiper.....	18
Upper Door Frame & Latch	20
Lower Door.....	22
Left Rear Window.....	24
Rear Window.....	26
Right Rear Window	28
Right Front Window / Emergency Exit	30
Lower Right Window	32
Four Point Seatbelt	34
Fuel Tank Cover, Frame Seals, Decals	36
70.2006-6 Defrost Fan Kit.....	38
70.2006-4 Mirror Kit	40
70.8162 Cab Hazard Lights Kit	42
70.8161 Strobe Light Kit.....	44
70.8148 Windshield Washer Kit.....	46
70.8160 Console Fan/Heater Kit.....	48
Heater Blower Assembly	50
70.8136 Kubota Heater Install Kit	52
70.8137 Kawasaki Heater Install Kit	54
70.4146 Kubota Radiator Baffle Kit.....	56
70.4147 Kubota Radiator Baffle Kit.....	58

PARTS

Wiring Diagram Reference Key

Wire Reference Key

Harness Section Identifier

= 32.0175 - Harness, Windshield Washer
V = 32.0168 - Harness, Wire Cab (Common Harness)
W = 32.0169 - Harness, Wire KW452 Supply
X = 32.0170 - Harness, Wire LW452 Supply
Y = 32.0174 - Harness, Wire Heater Kit
Z = 32.0176 - Harness, Wire Hazard

Wire Color & Circuit Type

Black = Ground
Red = Secondary Power
White = Primary Power
Yellow = Light/Hazard

----- = *Black Wire
———— = White Wire
||| ——— = Ground
● = Splice or Connection

* All black wires that are part of the wire harness are part of the ground circuit. However, some components such as lights may be wired where black may be positive.

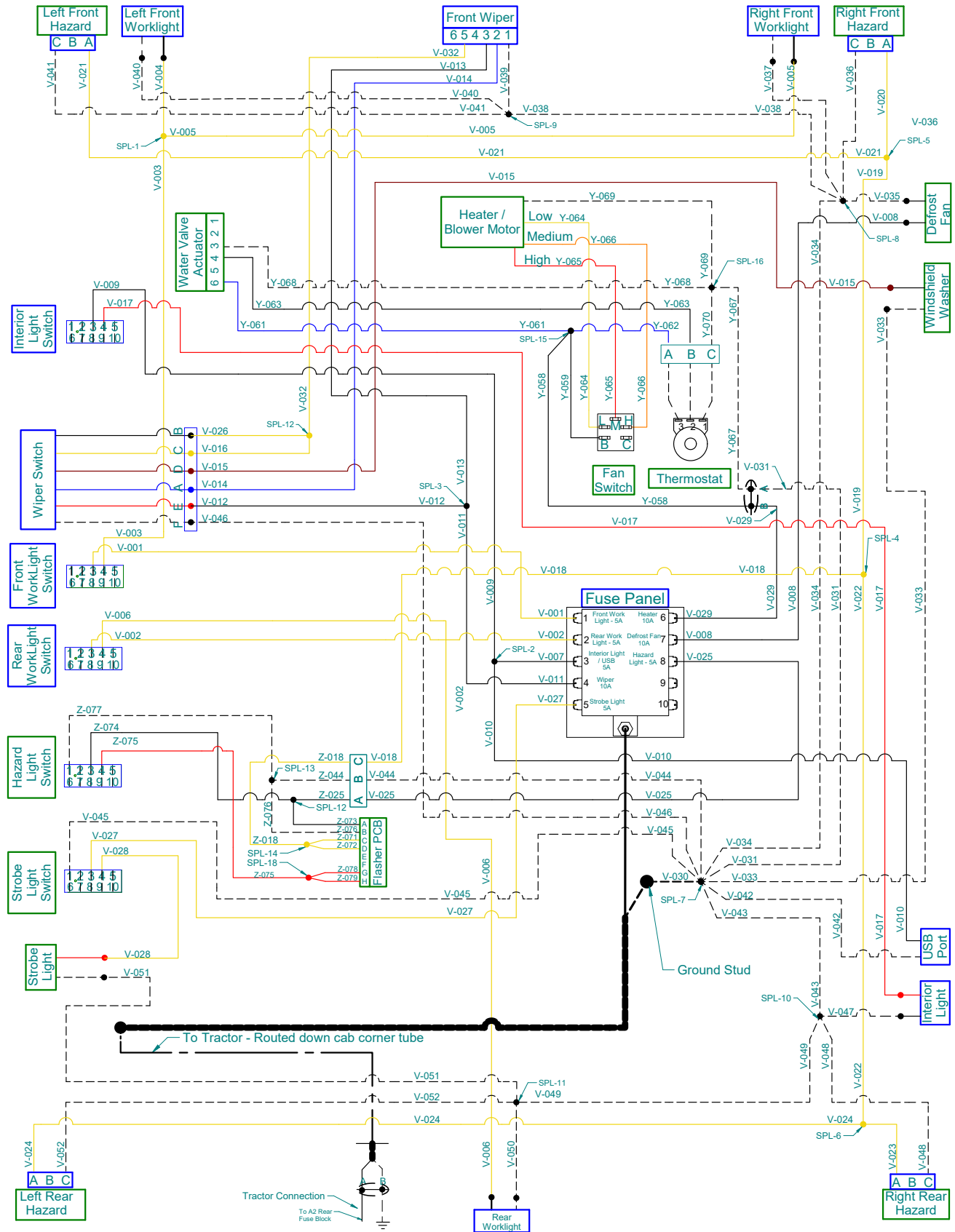
All other wires colors are as shown

Anything outlined with a blue box is a Standard Feature

Anything outlined with a Green box is a Option

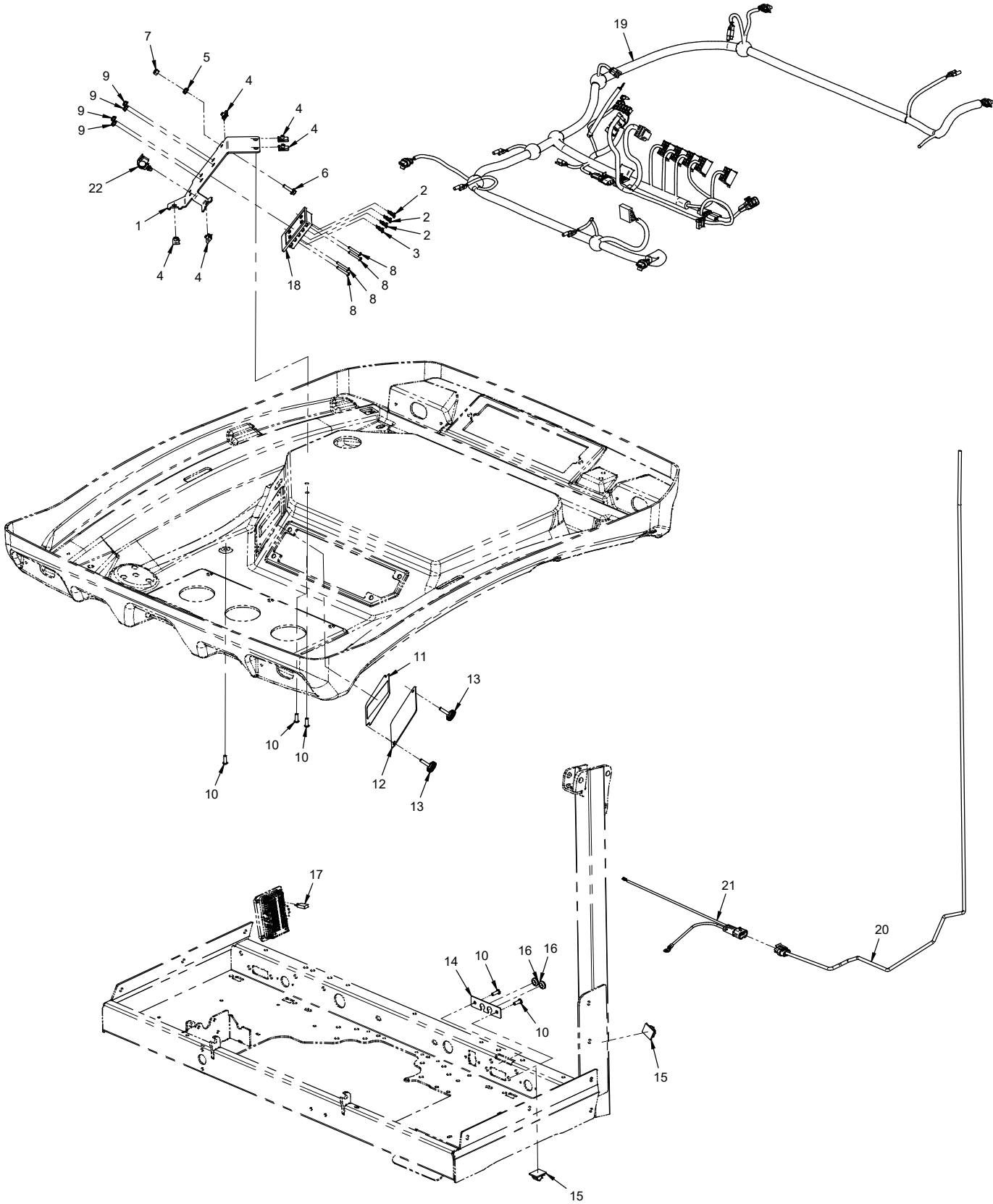
PARTS

Wiring Diagram



PARTS

ILLUSTRATED DRAWING Wire Harness & Fuse Panel



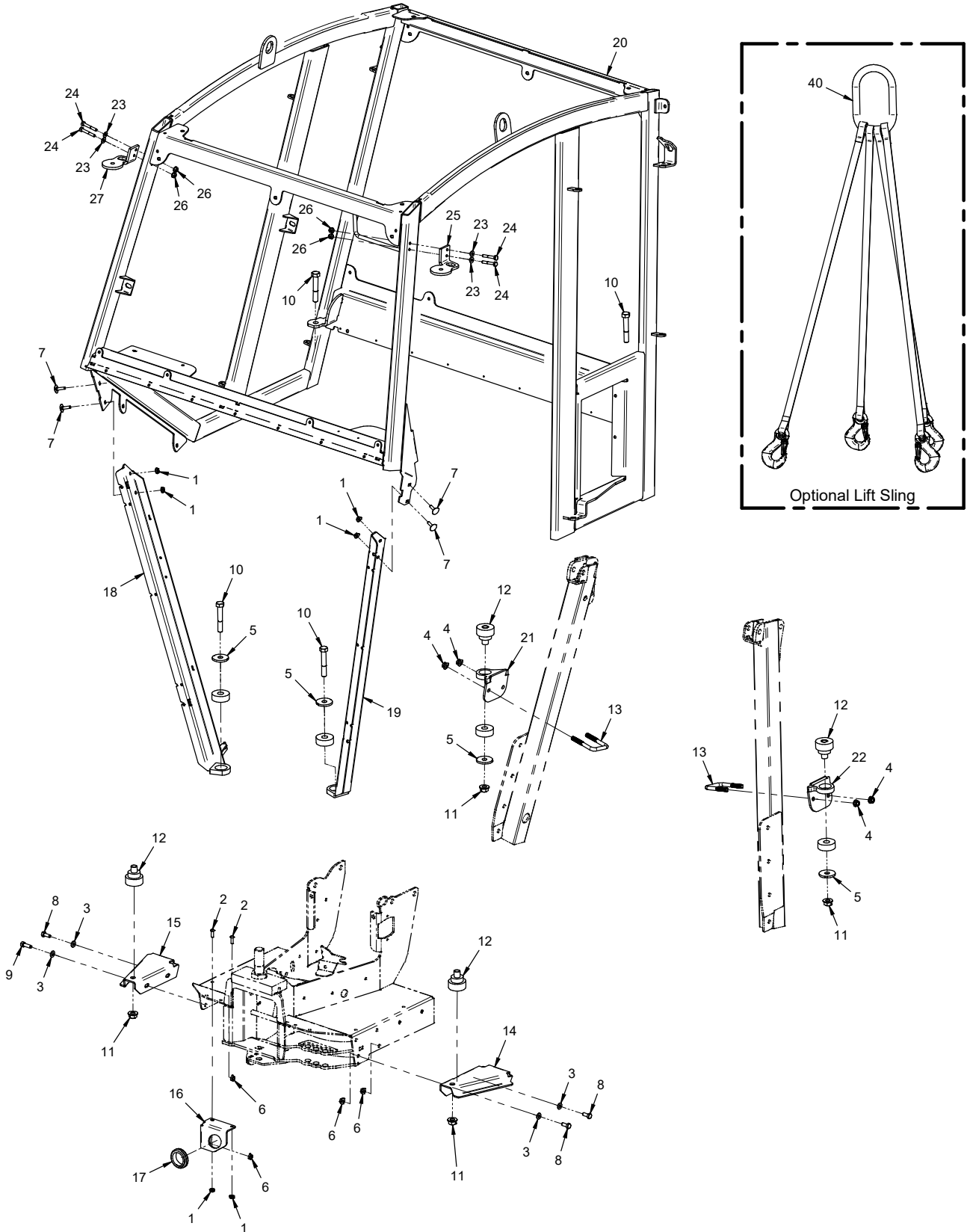
PARTS

Wire Harness & Fuse Panel

REF.	PART NO.	DESCRIPTION	QTY.
1	64.1913	.BRACKET, FUSE PANEL	1
2	30.0187	.FUSE, 5 AMP ATC BLADE - TAN.	3
3	30.0317	.FUSE, 10 AMP ATC BLADE - RED	1
4	99.E0046	.NUT, "U" 1/4-20 EXTRUDED	5
5	99.SF04	.NUT, SRF 1/4-20 USS.	1
6	99.SF0408	.BOLT, SRF 1/4 X 1 USS	1
7	99.A04N	.LOCKNUT, NYLON 1/4-20	1
8	99.K0144	.MACHINE SCREW, #10-32 X 1-1/4	4
9	99.E0035	.NUT, SRF #10-32	4
10	99.0406	.BOLT, 1/4-20 X 3/4 BSCS	5
11	00.0412	.DECAL, FUSE POSITION	1
12	60.1273	.COVER, FUSE PANEL	1
13	47.0399	.KNOB, 1/4-20 X 1 KNURLED	2
14	60.1175	.COVER, OPT. LIGHT KIT ACCESS (4500)	1
14	KN-1281	.COVER, WIRE HARNESS ACCESS (4520)	1
15	30.0217	.CLAMP, WIRE MT ADH. 1/2 GRAY	2
16	05.0136	.GROMMET, 7/16ID, 3/4OD, 1/4THK	2
17	30.0445	.BREAKER, CIRCUIT 30 AMP MINI	1
18	30.0499	.FUSE PANEL, 10 POS ATC	1
19	32.0168	.HARNESS, WIRE "2" SERIES CAB	1
20	32.0169	.HARNESS, WIRE KW452 SUPPLY	1
21	32.0129	.HARNESS, WIRE KW452/CANOPY FAN (4500, 4520 Serial # 01001-02232)	1
21	32.0243	.HARNESS, WIRE KW452/CANOPY FAN (4520 Serial # 02233-)	1
22	30.0135	.CLAMP, LOOM 3/8 ROSEBUD MOUNT	1

PARTS

ILLUSTRATED DRAWING Cab Frame & Mount



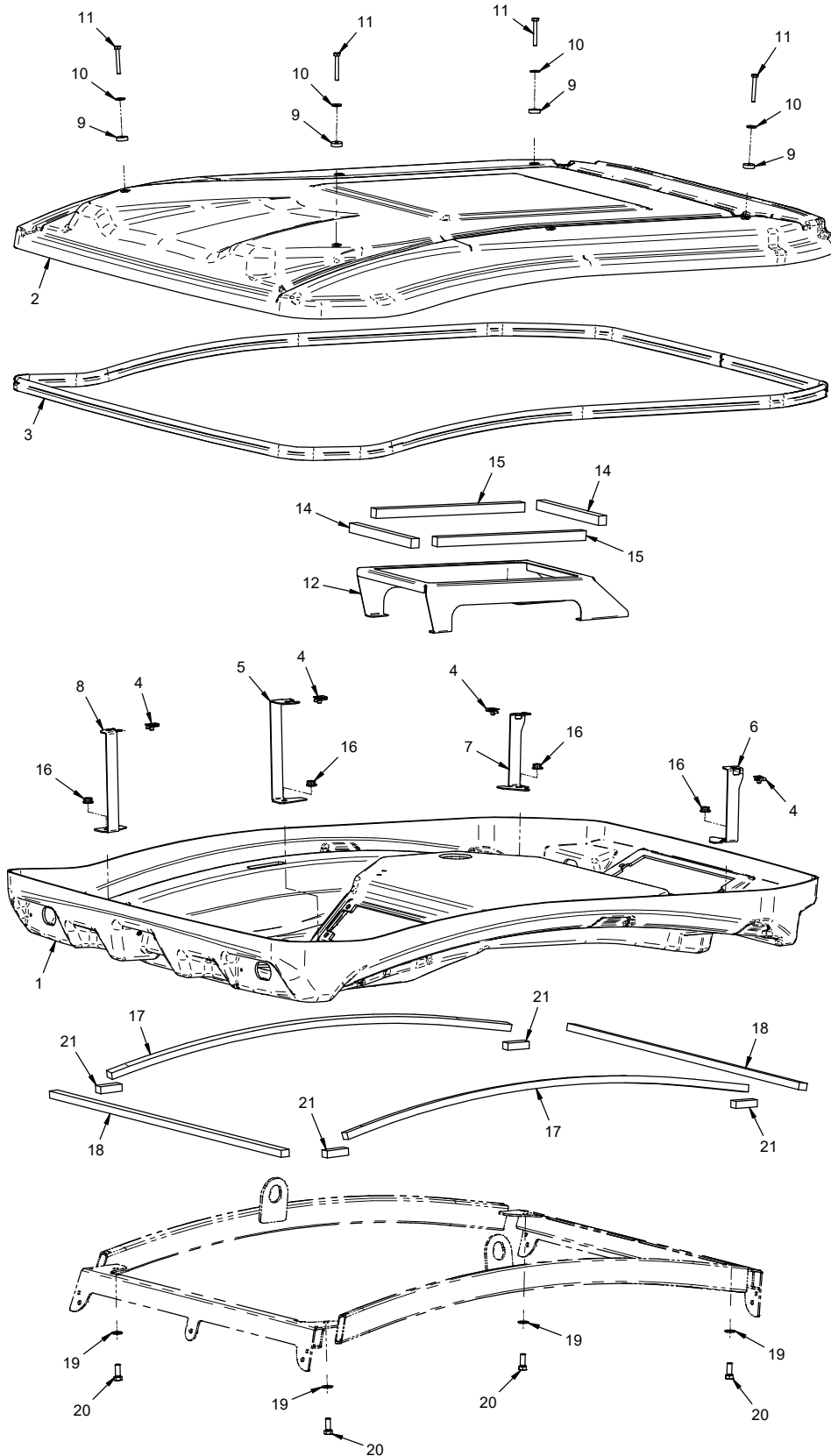
PARTS

Cab Frame & Mount

REF.	PART NO.	DESCRIPTION	QTY.
1	99.SF04	.NUT, SRF 1/4-20 USS	6
2	99.0406	.BOLT, 1/4-20 X 3/4 BSCS	2
3	95.05	.WASHER, FLAT 5/16 SAE	4
4	99.E0082	.NUT, LOCKING FLANGE 3/8-16	4
5	99.B0095	.WASHER, .531 X 1.75 3/16 THICK	4
6	99.SF05	.NUT, SRF 5/16-18 USS	4
7	99.K0143	.BOLT, STEP 1/4-20 X 1 BLK	4
8	90.0506	.BOLT, 5/16-18 USS X 3/4"	3
9	90.0508	.BOLT, 5/16-18 USS X 1"	1
10	90.0824	.BOLT, 1/2-13 USS X 3.	4
11	99.E0103	.NUT, LOCKING FLANGE 1/2-13	4
12	05.0123	.ISOLATOR, .53 ID X 1.87 OD	4
13	11.0053	.U-BOLT, 3/8-16 2-1/16" ID SQ BEND	2
14	64.1732	.MOUNT, CAB FRONT LEFT	1
15	64.1733	.MOUNT, CAB FRONT RIGHT	1
16	64.1738	.BRACKET, MOUNT SUPPORT	1
17	05.0036	.GROMMET, 1 1/2ID,2 1/8OD,9/16T	1
18	64.1474	.SUPPORT, CAB FRONT RH	1
19	64.1473	.SUPPORT, CAB FRONT LH	1
20	62.1463	.FRAME, MAIN KW452	1
21	64.1478	.MOUNT, CAB REAR RIGHT	1
22	64.1477	.MOUNT, CAB REAR LEFT	1
23	95.04	.WASHER, FLAT 1/4 SAE (Serial # 03584-)	4
24	90.0414	.BOLT, 1/4-20 USS X 1-3/4 (Serial # 03584-)	4
25	KW-256	.MOUNT,LEFT MIRROR (Serial # 03584-)	1
26	99.E0101	.NUT, LOCKING FLANGE 1/4-20 (Serial # 03584-)	4
27	KW-257	.MOUNT,RIGHT MIRROR (Serial # 03584-)	1
40	47.0381	.SLING, LIFT (OPTIONAL)	1

PARTS

ILLUSTRATED DRAWING Cab Roof Mount



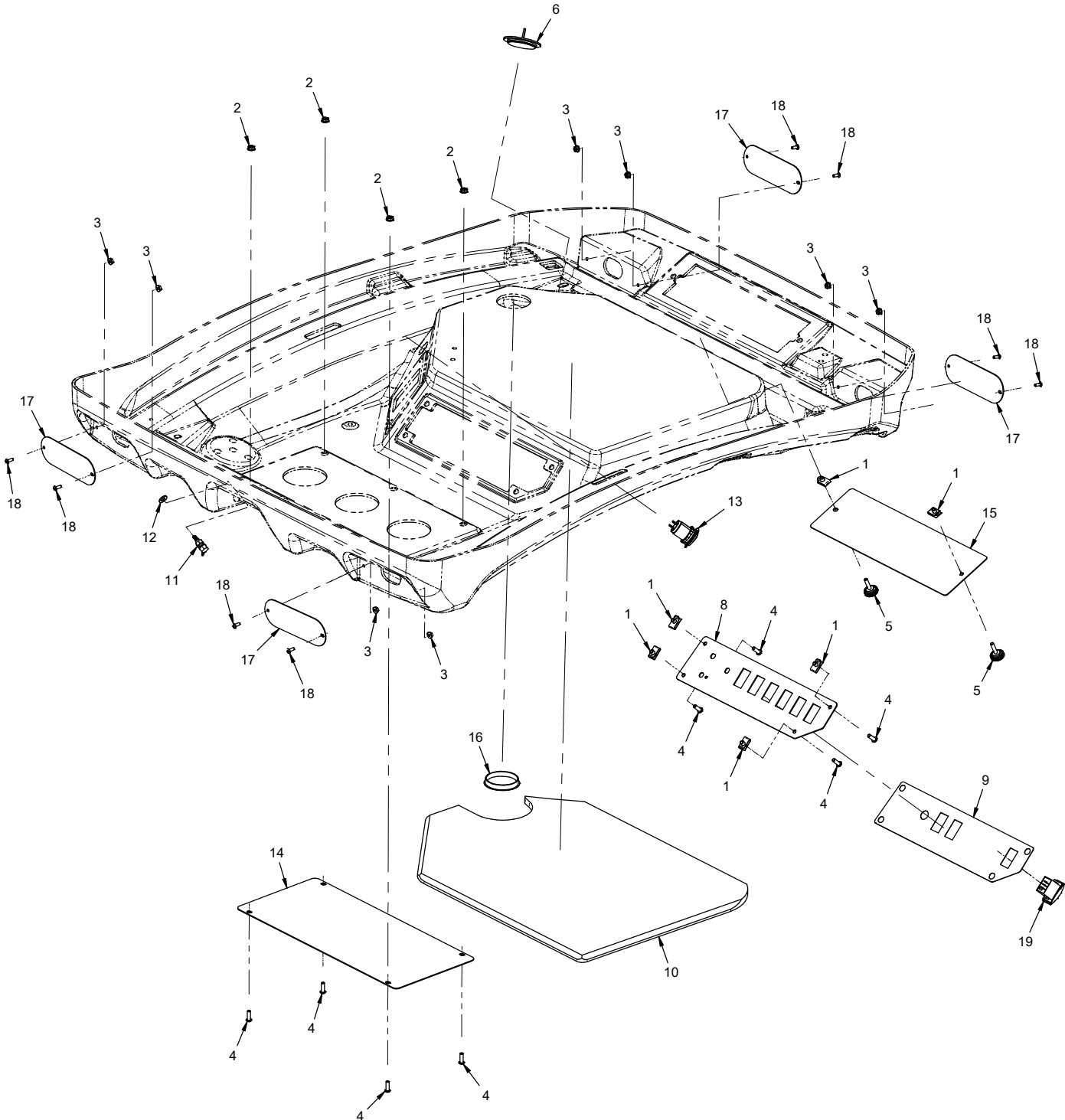
PARTS

Cab Roof Mount

REF.	PART NO.	DESCRIPTION	QTY.
1	44.0362	.HEADLINER, CAB	1
2	44.0363	.ROOF, CAB	1
3	06.0080-186IN	.TRIM, SEAL 7/16" BULB X 186"	1
4	99.E0046	.NUT, "U" 1/4-20 EXTRUDED	4
5	64.1918	.BRACKET, ROOF MNT FRONT LEFT	1
6	64.1919	.BRACKET, ROOF MNT REAR LEFT	1
7	64.1939	.BRACKET, ROOF MNT REAR RIGHT	1
8	64.1935	.BRACKET, ROOF MNT FRONT RIGHT	1
9	05.0168	.WASHER, 1/4 ID X 7/8 OD X 1/4T	4
10	94.04	.WASHER, FLAT 1/4 USS	4
11	90.0420-2	.BOLT, 1/4-20 X 2" TAP ZP	4
12	64.1945	.BRACKET, ROOF SUPPORT	1
14	06.0081-9IN	.WEATHERSTRIP, 3/4 X 3/4 FOAM X 9"	2
15	06.0081-14IN	.WEATHERSTRIP, 3/4 X 3/4 FOAM X 14"	2
16	99.E0082	.NUT, LOCKING FLANGE 3/8-16	4
17	06.0081-38IN	.WEATHERSTRIP, 3/4 X 3/4 FOAM X 38"	2
18	06.0081-34.25IN	.WEATHERSTRIP, 3/4 X 3/4 FOAM X 34-1/4"	2
19	95.06	.WASHER, FLAT 3/8 SAE	4
20	90.0608	.BOLT, 3/8-16 USS X 1	4
21	06.0081-2IN	.WEATHERSTRIP, 3/4 X 3/4 FOAM X 2"	4

PARTS

ILLUSTRATED DRAWING Main Switch Panel, Cover Plates, & Components



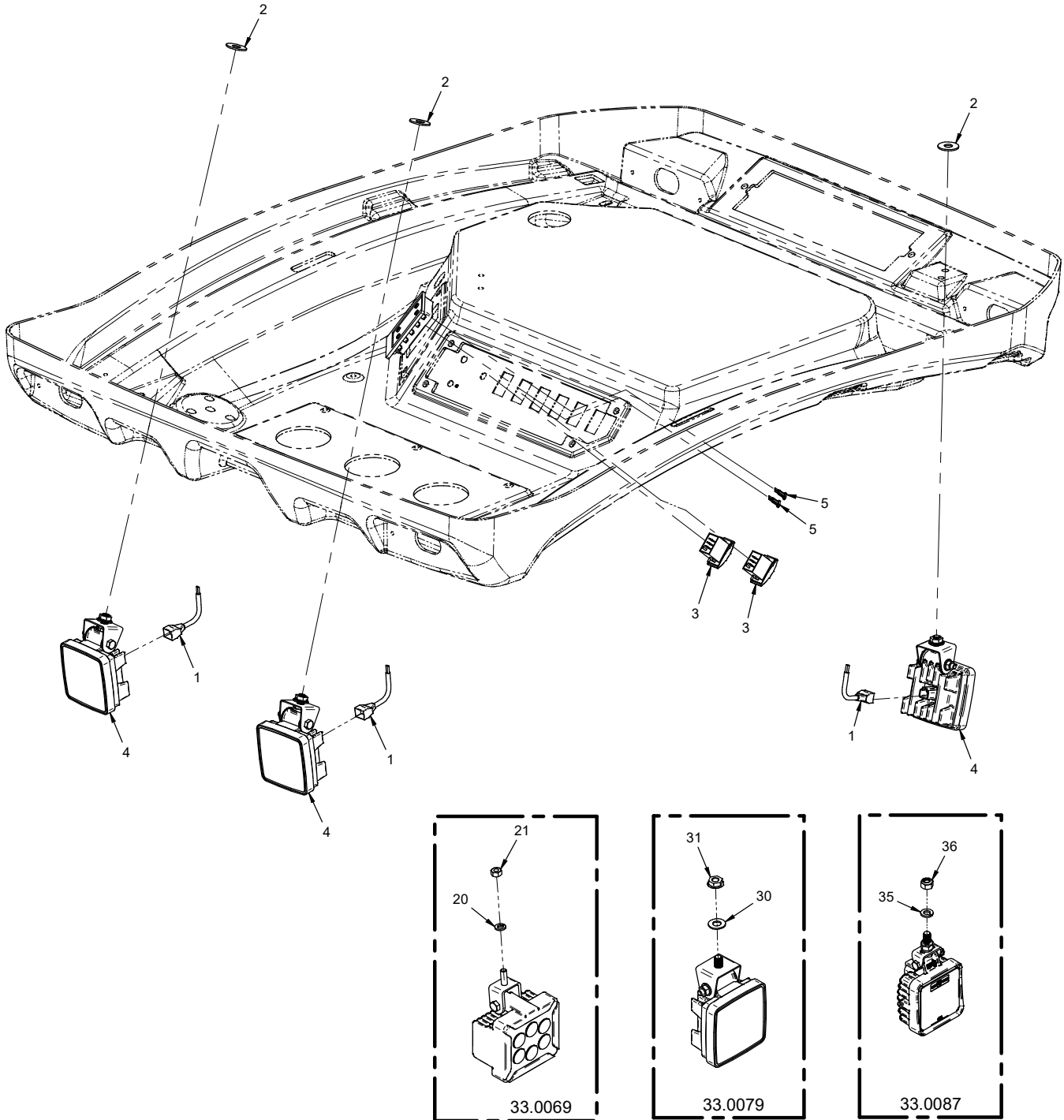
PARTS

Main Switch Panel, Cover Plates, & Components

REF.	PART NO.	DESCRIPTION	QTY.
1	99.E0046	.NUT, "U" 1/4-20 EXTRUDED	6
2	99.SF04	.NUT, SRF 1/4-20 USS	4
3	99.E0035	.NUT, SRF #10-32	8
4	99.0406	.BOLT, 1/4-20 X 3/4 BSCS (Serial # 01001-01286)	8
4	99.0406	.BOLT, 1/4-20 X 3/4 BSCS (Serial # 01287-)	4
5	47.0399	.KNOB, 1/4-20 X 1 KNURLED	2
6	33.0072	.LIGHT, INTERIOR DOME	1
8	64.1914	.PLATE, MAIN SWITCH PANEL	1
9	00.0413	.DECAL, MAIN SWITCH PANEL	1
10	44.0364	.UPHOLSTERY, HEADLINER	1
11	47.0402	.FITTING, BULKHEAD 90 DEG	1
12	95.05	.WASHER, FLAT 5/16 SAE	1
13	30.0480	.RECEPTACLE, USB DUAL	1
14	64.1920	.PLATE, FRONT VENT COVER (Serial # 01001-01286)	1
15	47.0385	.RETAINER, NO FILTER (SOLID) (Serial # 01001-01286)	1
16	05.0076	.PLUG, 2-1/2" HOLE, BLK PLASTIC (Serial # 01001-01286)	1
17	64.1922	.PLATE, LIGHT COVER	4
18	99.K0062	.MACHINE SCREW, #10-32 X 1/2	8
19	31.0053	.SWITCH, ROCKER ON/OFF	4

PARTS

ILLUSTRATED DRAWING Front & Rear Work Lights



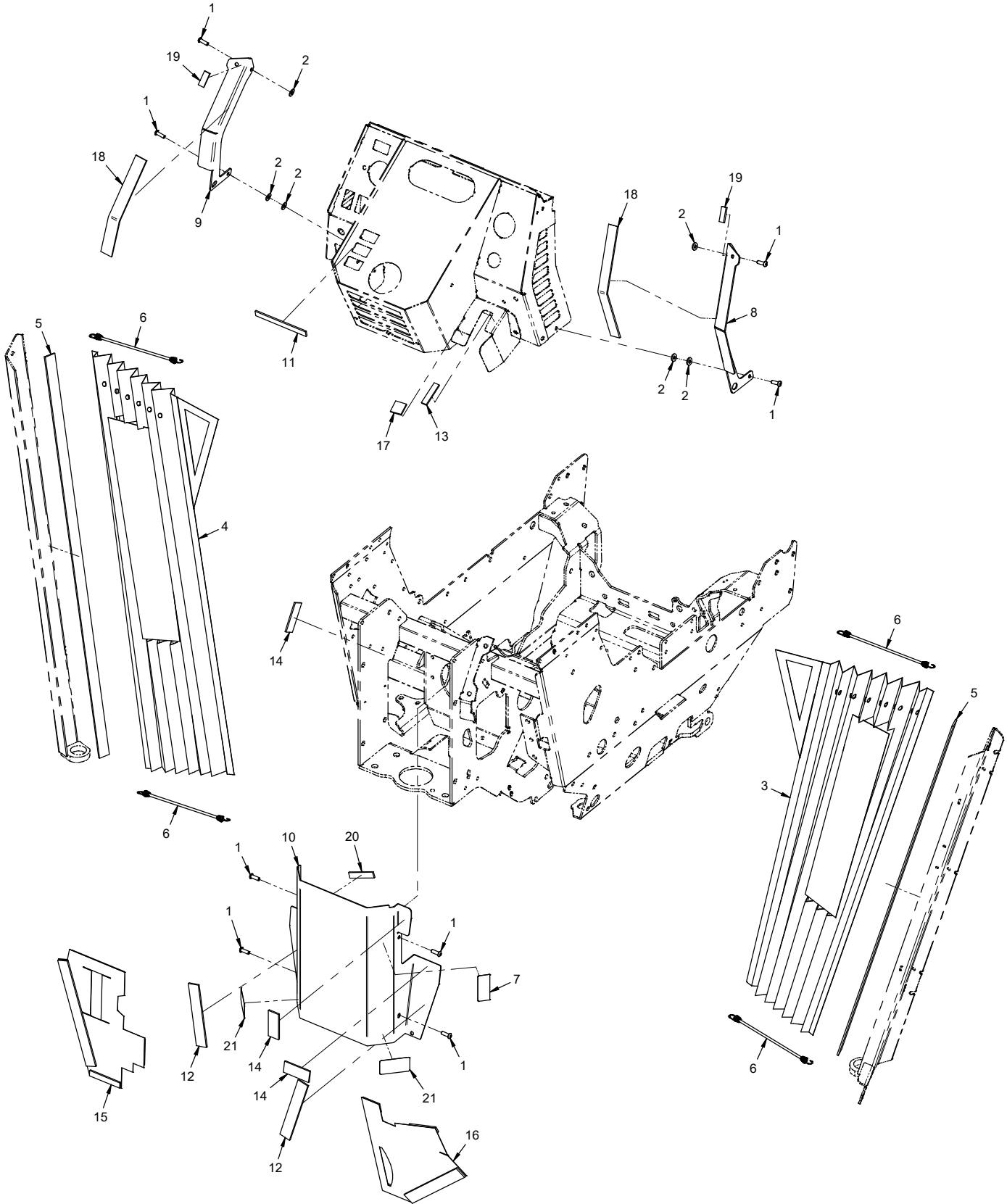
PARTS

Front & Rear Work Lights

REF.	PART NO.	DESCRIPTION	QTY.
1	32.0161	.HARNESS, WIRE 33.0069 BULLET (Serial # 01001-01316)	3
1	32.0177	.HARNESS, WIRE GROTE WORK LIGHT (Serial # 01317-)	3
2	99.B0118	.WASHER, FENDER 5/16 X 1-1/4 (Serial # 01001-01316)	3
2	94.07	.WASHER, FLAT 7/16 USS (Serial # 01317-03173)	3
2	94.06	.WASHER, FLAT 3/8 USS (03174-)	3
3	31.0053	.SWITCH, ROCKER ON/OFF	2
4	33.0069	.LIGHT, WORK 3 X 3 LED (Serial # 01001-01316)	3
4	33.0079	.LIGHT, LED WIDE FLOOD (Serial # 01317-03173)	3
4	33.0087	.LIGHT, LED FLOOD WITH BRACKET (03174-)	3
5	30.0187	.FUSE, 5 AMP ATC BLADE - TAN.	2
20	96.05	.WASHER, LOCK 5/16	1
21	99.M0025	.NUT, M8 X 1.25MM	1
30	95.07	.WASHER, FLAT 7/16 SAE	1
31	99.M0021	.NUT, SMF M10 X 1.5MM	1
35	96.05	.WASHER, LOCK 5/16	1
36	99.M0068	.NUT, M8 X 1.25 NYLON LOCK	1

PARTS

ILLUSTRATED DRAWING Canvas Bellows & Column Covers



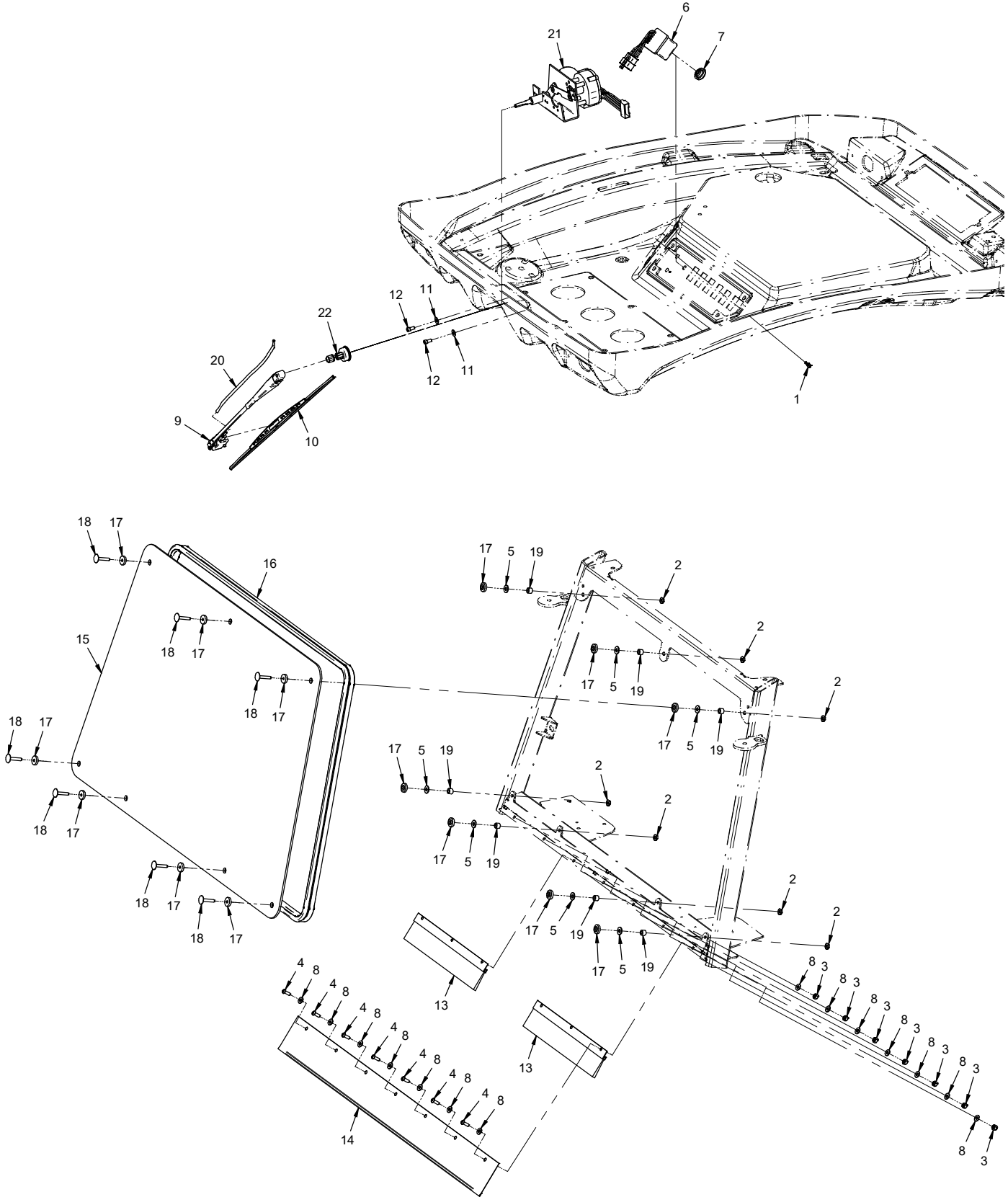
PARTS

Canvas Bellows & Column Covers

REF.	PART NO.	DESCRIPTION	QTY.
1	99.0406	.BOLT, 1/4-20 X 3/4 BSCS	8
2	95.04	.WASHER, FLAT 1/4 SAE	6
3	44.0326	.CANVAS, PLEATED RIGHT	1
4	44.0325	.CANVAS, PLEATED LEFT	1
5	06.0065-35IN	.VELCRO, LOOP 1" BLACK X 35"	2
6	47.0425	.STRAP, BELLOWS SUPPORT	4
7	00.0318	.DECAL, NEUTRAL ASSIST	1
8	64.1740	.MOUNT, CANVAS COLUMN RIGHT	1
9	64.1739	.MOUNT, CANVAS COLUMN LEFT	1
10	60.1180	.COVER, PUMP W/FLANGES	1
11	06.0071-5IN	.VELCRO, LOOP, 1/2" WIDE X 5"	1
12	06.0065-5.5IN	.VELCRO, LOOP, 1" BLACK X 5-1/2"	2
13	06.0071-2IN	.VELCRO, LOOP, 1/2" BLACK X 2"	1
14	06.0065-2.5IN	.VELCRO, LOOP 1" BLACK X 2-1/2"	3
15	44.0328	.CANVAS, COLUMN LEFT	1
16	44.0329	.CANVAS, COLUMN RIGHT	1
17	06.0065-1IN	.VELCRO, LOOP 1" BLACK X 1"	1
18	06.0065-9.75IN	.VELCRO, LOOP 1" BLACK X 9-3/4"	2
19	06.0071-1.25IN	.VELCRO, LOOP 1/2" BLACK X 1-1/4"	2
20	06.0071-2.5IN	.VELCRO, LOOP 1/2" BLACK X 2-1/2"	1
21	00.0639	.DECAL, PINCHING HAZARD FOOT	2

PARTS

ILLUSTRATED DRAWING Front Windshield & Windshield Wiper



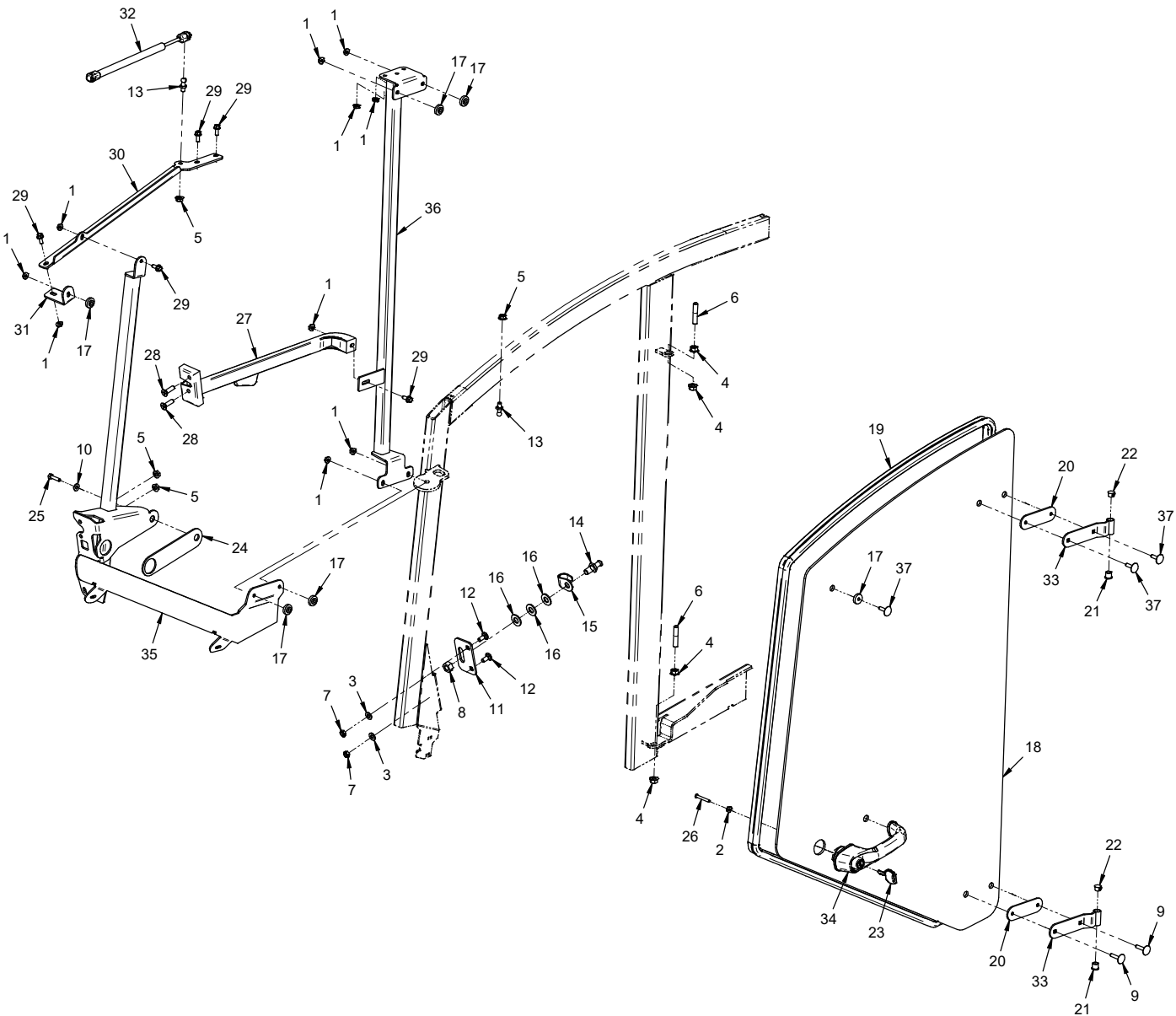
PARTS

Front Windshield & Windshield Wiper

REF.	PART NO.	DESCRIPTION	QTY.
1	30.0317	.FUSE, 10 AMP ATC BLADE - RED	1
2	99.SF04	.NUT, SRF 1/4-20 USS	7
3	99.A04N	.LOCKNUT, NYLON 1/4-20	7
4	99.0406	.BOLT, 1/4-20 X 3/4 BSCS	7
5	94.04	.WASHER, FLAT 1/4 USS	7
6	31.0069	.SWITCH, WIPER ROTARY W/WASHER	1
7	31.0069-1	.KNOB, WIPER SWITCH	1
8	95.04	.WASHER, FLAT 1/4 SAE	14
9	47.0403	.WIPER ARM, RADIAL 16" WET	1
10	47.0287	.WIPER BLADE, WINDSHIELD 21"	1
11	95.04-3	.WASHER, FLAT 1/4 SAE SS	2
12	99.K0142	.BOLT, SHCS 1/4-28 X 1/2 SS	2
13	79.0096	.BRUSH, CANVAS SUPPORT	2
14	44.0276	.CANVAS, WINDSHIELD BOTTOM	1
15	44.0306	.WINDOW, FRONT WINDSHIELD 3/16	1
16	06.0072-128IN	.TRIM, SEAL DOUBLE BULB 3/16 X 128"	1
17	85.B0098	.BUSHING, STEP 1/4 X 7/8 X 5/16H	14
18	99.K0119	.BOLT, STEP 1/4-20 X 1-1/2 BLK	7
19	05.0166	.SPACER, 1/4 X 1/2 X 3/8L	7
20	27.0004	.TUBING, WASHER FOR WIPER ARM	1
21	37.0056	.MOTOR, WINDSHIELD WIPER 1 SPD	1
22	47.0301	.KIT, WIPER MOTOR HARDWARE	1

PARTS

ILLUSTRATED DRAWING Upper Door Frame & Latch



PARTS

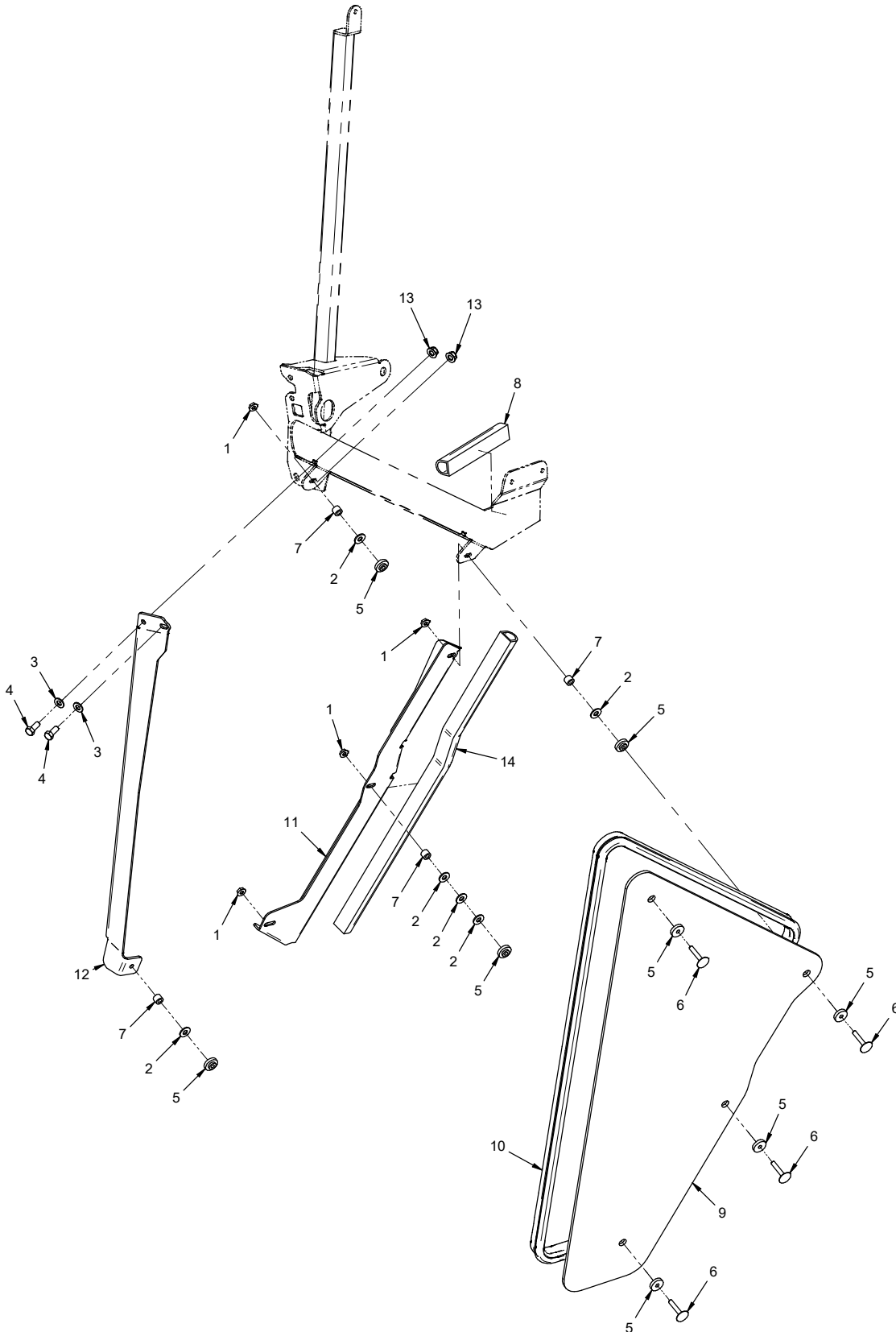
Upper Door Frame & Latch

REF.	PART NO.	DESCRIPTION	QTY.
1	99.SF04	.NUT, SRF 1/4-20 USS	10
2	99.E0035	.NUT, SRF #10-32	1
3	95.05	.WASHER, FLAT 5/16 SAE	2
4	99.SF06	.NUT, SRF 3/8-16 USS	4
5	99.SF05	.NUT, SRF 5/16-18 USS	4
6	99.F0043	.PIN, HINGE 3/8-16 X 1-7/8 SS	2
7	99.A05	.LOCKNUT, STOVER 5/16-18 USS	2
8	99.M0023	.NUT, M12 X 1.0MM	1
9	99.K0115	.BOLT, STEP 1/4-20X1-1/4 BLK	2
10	95.04	.WASHER, FLAT 1/4 SAE	1
11	64.1488	.MOUNT, STRIKER PIN	1
12	97.0506	.BOLT, CARRIAGE 5/16 X 3/4	2
13	47.0225	.STUD, BALL 10MM 5/16-18 THREAD	2
14	47.0283	.STRIKER, DOOR LATCH	1
15	47.0284	.GUARD, STRIKER	1
16	95.08	.WASHER, FLAT 1/2 SAE	3
17	85.B0098	.BUSHING, STEP 1/4 X 7/8 X 5/16H	6
18	44.0291	.WINDOW, DOOR UPPER 3/16	1
19	06.0072-127IN	.TRIM, SEAL DOUBLE BULB 3/16" X 127"	1
20	44.0274	.GASKET, GLASS HINGE MOUNT	2
21	85.B0068	.BUSHING, 3/8 X 1/2 OD X 1/2 LG	2
22	05.0070	.PLUG, 1/2" HOLE, NYLON	2
23	47.0357	.KEY, DOOR HANDLE KW (2 KEYS)	1
24	44.0273	.GASKET, DOOR HANDLE INNER	1
25	99.M0022	.BOLT, M6 X 1.0 X 25MM	1
26	99.K0067	.MACHINE SCREW, #10-32 X 1-1/2	1
27	47.0282	.LATCH, DOOR ASM	1
28	99.K0116	.MACHINE SCREW, 5/16-18 X 1-1/4	2
29	99.SF0405-1	.BOLT, SMF 1/4-20 X 5/8	5
30	64.1493	.BRACKET, DOOR FRAME TOP	1
31	64.1489	.BRACKET, DOOR GLASS MOUNT	1
32	47.0289	.SHOCK, GAS SPRING .59 DIA 20#	1
33	64.1480	.HINGE, GLASS MOUNT	2
34	47.0281	.HANDLE, PUSH BUTTON ASM	1
35	62.1327	.FRAME, DOOR FRONT	1
36	62.1328	.FRAME, DOOR REAR	1
37	99.K0143	.BOLT, STEP 1/4-20 X 1 BLK	3

PARTS

ILLUSTRATED DRAWING

Lower Door



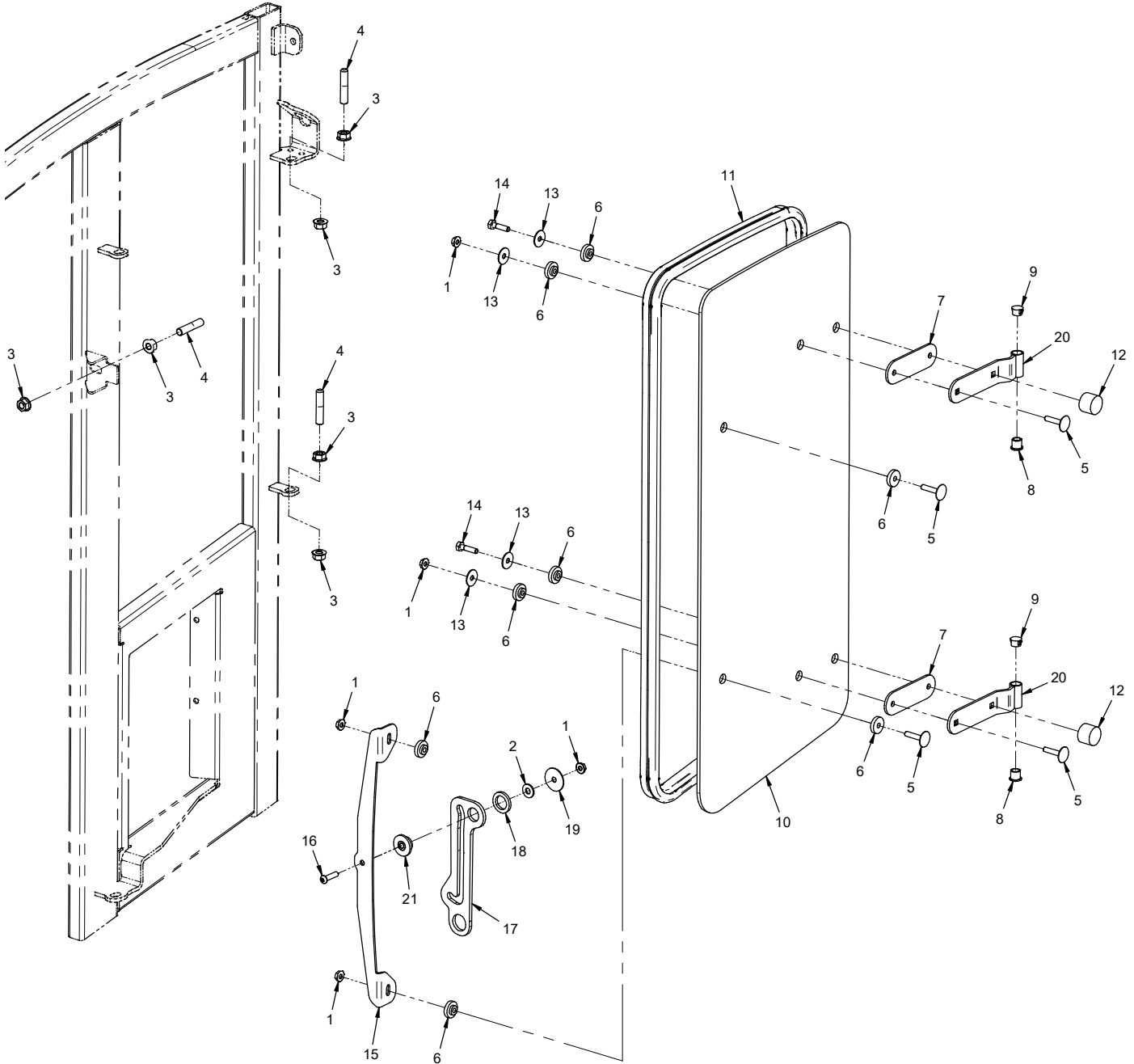
PARTS

Lower Door

REF.	PART NO.	DESCRIPTION	QTY.
1	99.SF04	NUT, SRF 1/4-20 USS	4
2	94.04	WASHER, FLAT 1/4 USS	6
3	95.05	WASHER, FLAT 5/16 SAE	2
4	90.0506	BOLT, 5/16-18 USS X 3/4"	2
5	85.B0098	BUSHING, STEP 1/4 X 7/8 X 5/16H	8
6	99.K0119	BOLT, STEP 1/4-20 X 1-1/2 BLK	4
7	05.0166	SPACER, 1/4 X 1/2 X 3/8L	4
8	06.0064-6IN	WEATHERSTRIP, 1 X1 D-SHAPE X 6"L	1
9	44.0292	WINDOW, DOOR LOWER 3/16	1
10	06.0072-90IN	TRIM, SEAL DOUBLE BULB 3/16" X 90"	1
11	64.1494	BRACKET, WINDOW DOOR LOWER	1
12	64.1472	SUPPORT, DOOR WINDOW LOWER	1
13	99.E0102	NUT, LOCKING FLANGE 5/16-18	2
14	06.0064-23.5IN	WEATHERSTRIP, 1 X1 D-SHAPE X 23.5"L	1

PARTS

ILLUSTRATED DRAWING Left Rear Window



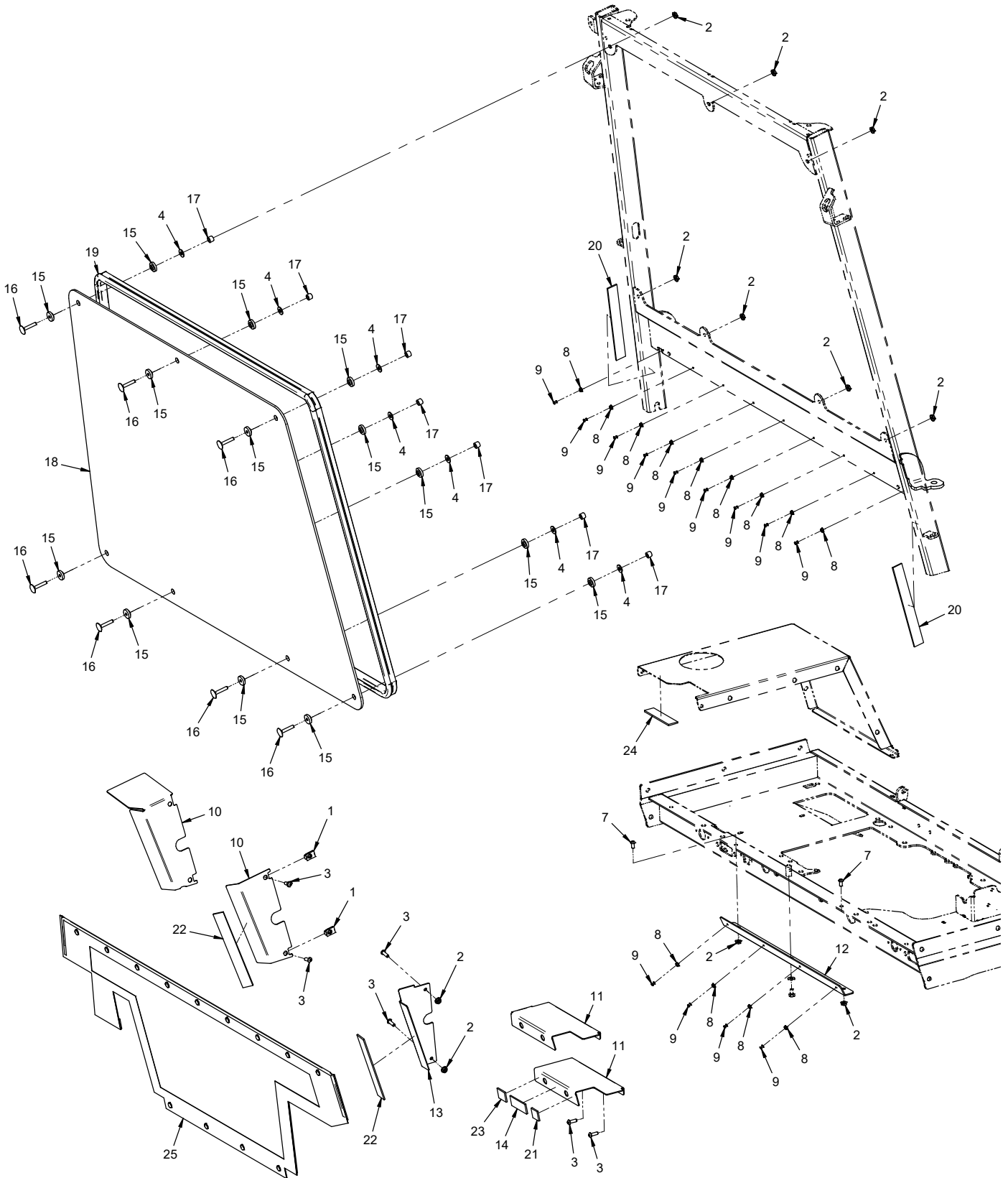
PARTS

Left Rear Window

REF.	PART NO.	DESCRIPTION	QTY.
1	99.SF04	.NUT, SRF 1/4-20 USS	5
2	94.04	.WASHER, FLAT 1/4 USS	1
3	99.SF06	.NUT, SRF 3/8-16 USS	6
4	99.F0043	.PIN, HINGE 3/8-16 X 1-7/8 SS	3
5	99.K0143	.BOLT, STEP 1/4-20 X 1 BLK	4
6	85.B0098	.BUSHING, STEP 1/4 X 7/8 X 5/16H	8
7	44.0274	.GASKET, GLASS HINGE MOUNT	2
8	85.B0068	.BUSHING, 3/8 X 1/2 OD X 1/2 LG	2
9	05.0070	.PLUG, 1/2" HOLE, NYLON	2
10	44.0293	.WINDOW, LEFT REAR 3/16	1
11	06.0072-82IN	.TRIM, SEAL DOUBLE BULB 3/16" X 82"	1
12	05.0125	.BUMPER, NEOPRENE 1" DIA	2
13	99.B0100	.WASHER, FENDER 1/4 X 7/8 OD ZP	4
14	90.0408	.BOLT, 1/4-20 USS X 1"	2
15	64.1952	.BRACKET, REAR WINDOW LATCH	1
16	99.0408	.BOLT, 1/4-20 X 1 BSCS	1
17	40.0403	.ARM, SIDE WINDOW LATCH	1
18	05.0164	.WASHER, RUBBER EPDM	1
19	99.B0116	.WASHER, FENDER 1/4 X 1-1/4	1
20	64.1480	.HINGE, GLASS MOUNT	2
21	05.0165	.GROMMET, FLANGE .28X0.74X0.43T	1

PARTS

ILLUSTRATED DRAWING Rear Window



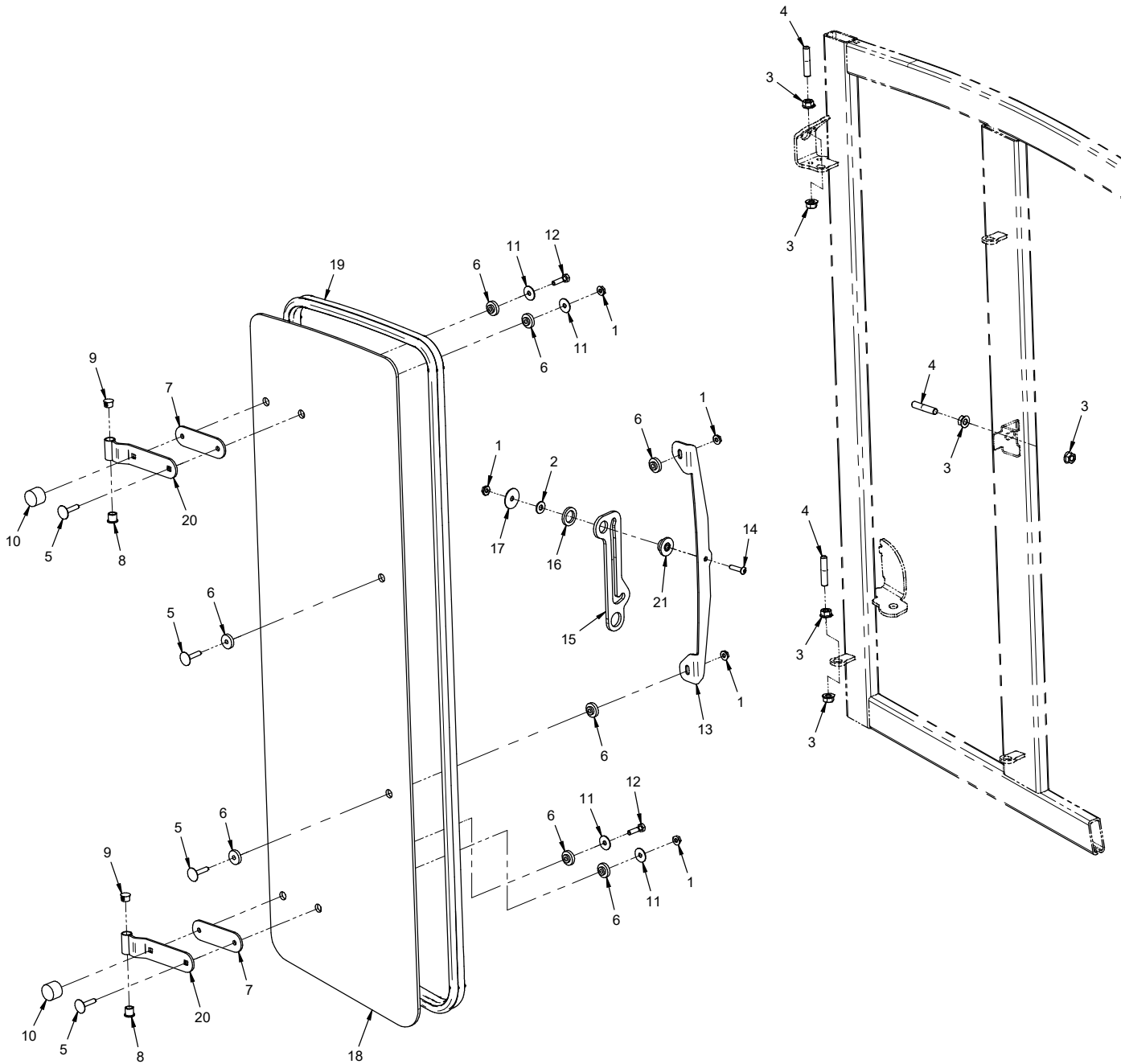
PARTS

Rear Window

REF.	PART NO.	DESCRIPTION	QTY.
1	99.E0046	.NUT, "U" 1/4-20 EXTRUDED	2
2	99.SF04	.NUT, SRF 1/4-20 USS	11
3	99.0406	.BOLT, 1/4-20 X 3/4 BSCS	6
4	94.04	.WASHER, FLAT 1/4 USS	7
7	99.0404	.BOLT, 1/4-20 X 1/2 BSCS	2
8	04.0020	.SNAP, STUD 3/8 X 9/16 SS	13
9	04.0029	.RIVET, POP 1/8" X 1/4" SS	13
10	64.1737	.BRACKET, WINDOW REAR LEFT (4500)	1
10	64.2032	.BRACKET, WINDOW REAR LEFT (4520)	1
11	64.1735	.BRACKET, WINDOW REAR TOP (4500)	1
11	64.2031	.BRACKET, WINDOW REAR TOP (4520)	1
12	64.1734	.MOUNT, WINDOW REAR LOWER	1
13	64.1736	.BRACKET, WINDOW REAR RIGHT	1
14	06.0065-2.5IN	.VELCRO, LOOP 1" BLACK X 2-1/2"	1
15	85.B0098	.BUSHING, STEP 1/4 X 7/8 X 5/16H	14
16	99.K0119	.BOLT, STEP 1/4-20 X 1-1/2 BLK	7
17	05.0166	.SPACER, 1/4 X 1/2 X 3/8L	7
18	44.0307	.WINDOW, REAR 3/16	1
19	06.0072-140IN	.TRIM, SEAL DOUBLE BULB 3/16" X 140"	1
20	06.0065-8IN	.VELCRO, LOOP 1" BLACK X 8"	2
21	06.0065-1IN	.VELCRO, LOOP 1" BLACK X 1"	1
22	06.0065-7.75IN	.VELCRO, LOOP 1" BLACK X 7-3/4"	2
23	06.0065-1.25IN	.VELCRO, LOOP 1" BLACK X 1-1/4"	1
24	06.0065-4IN	.VELCRO, LOOP 1" BLACK X 4"	1
25	44.0324	.WINDOW, LOWER REAR CANVAS	1

PARTS

ILLUSTRATED DRAWING Right Rear Window



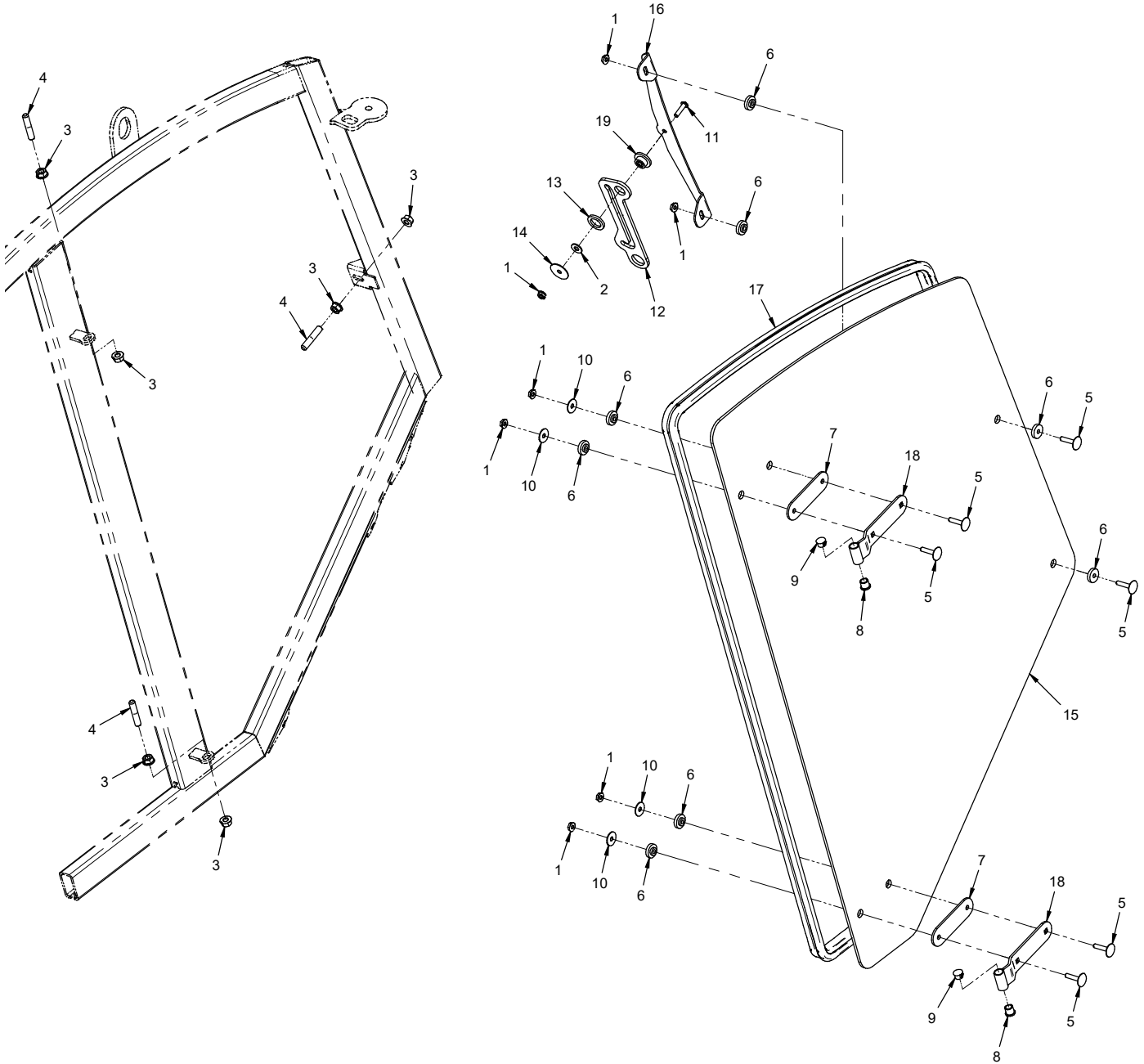
PARTS

Right Rear Window

REF.	PART NO.	DESCRIPTION	QTY.
1	99.SF04	.NUT, SRF 1/4-20 USS	5
2	94.04	.WASHER, FLAT 1/4 USS	1
3	99.SF06	.NUT, SRF 3/8-16 USS	6
4	99.F0043	.PIN, HINGE 3/8-16 X 1-7/8 SS	3
5	99.K0143	.BOLT, STEP 1/4-20 X 1 BLK	4
6	85.B0098	.BUSHING, STEP 1/4 X 7/8 X 5/16H	8
7	44.0274	.GASKET, GLASS HINGE MOUNT	2
8	85.B0068	.BUSHING, 3/8 X 1/2 OD X 1/2 LG	2
9	05.0070	.PLUG, 1/2" HOLE, NYLON	2
10	05.0125	.BUMPER, NEOPRENE 1" DIA	2
11	99.B0100	.WASHER, FENDER 1/4 X 7/8 OD ZP	4
12	90.0408	.BOLT, 1/4-20 USS X 1"	2
13	64.1952	.BRACKET, REAR WINDOW LATCH	1
14	99.0408	.BOLT, 1/4-20 X 1 BSCS	1
15	40.0403	.ARM, SIDE WINDOW LATCH	1
16	05.0164	.WASHER, RUBBER EPDM	1
17	99.B0116	.WASHER, FENDER 1/4 X 1-1/4	1
18	44.0294	.WINDOW, RIGHT REAR 3/16	1
19	06.0072-110IN	.TRIM, SEAL DOUBLE BULB 3/16" X 110"	1
20	64.1480	.HINGE, GLASS MOUNT	2
21	05.0165	.GROMMET, FLANGE .28X0.74X0.43T	1

PARTS

ILLUSTRATED DRAWING Right Front Window / Emergency Exit



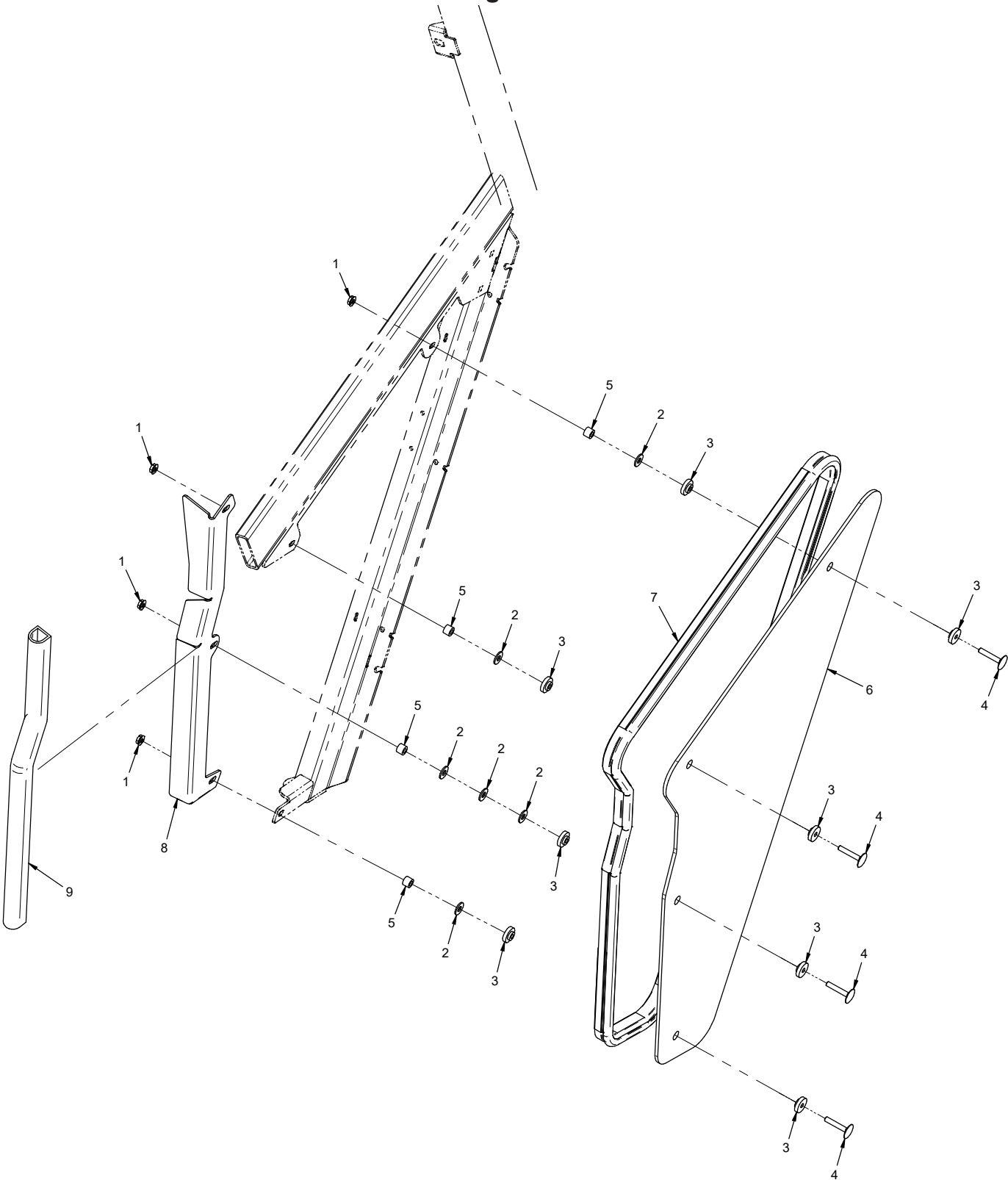
PARTS

Right Front Window / Emergency Exit

REF.	PART NO.	DESCRIPTION	QTY.
1	99.SF04	.NUT, SRF 1/4-20 USS	7
2	94.04	.WASHER, FLAT 1/4 USS	1
3	99.SF06	.NUT, SRF 3/8-16 USS	6
4	99.F0043	.PIN, HINGE 3/8-16 X 1-7/8 SS	3
5	99.K0143	.BOLT, STEP 1/4-20 X 1 BLK	6
6	85.B0098	.BUSHING, STEP 1/4 X 7/8 X 5/16H	8
7	44.0274	.GASKET, GLASS HINGE MOUNT	2
8	85.B0068	.BUSHING, 3/8 X 1/2 OD X 1/2 LG	2
9	05.0070	.PLUG, 1/2" HOLE, NYLON	2
10	99.B0100	.WASHER, FENDER 1/4 X 7/8 OD ZP	4
11	99.0408	.BOLT, 1/4-20 X 1 BSCS	1
12	40.0403	.ARM, SIDE WINDOW LATCH	1
13	05.0164	.WASHER, RUBBER EPDM	1
14	99.B0116	.WASHER, FENDER 1/4 X 1-1/4	1
15	44.0295	.WINDOW, RIGHT FRONT ESC 3/16	1
16	64.1953	.BRACKET, ESCAPE WINDOW LATCH	1
17	06.0072-126IN	.TRIM, SEAL DOUBLE BULB 3/16" X 126"	1
18	64.1480	.HINGE, GLASS MOUNT	2
19	05.0165	.GROMMET, FLANGE .28X0.74X0.43T	1

PARTS

ILLUSTRATED DRAWING Lower Right Window



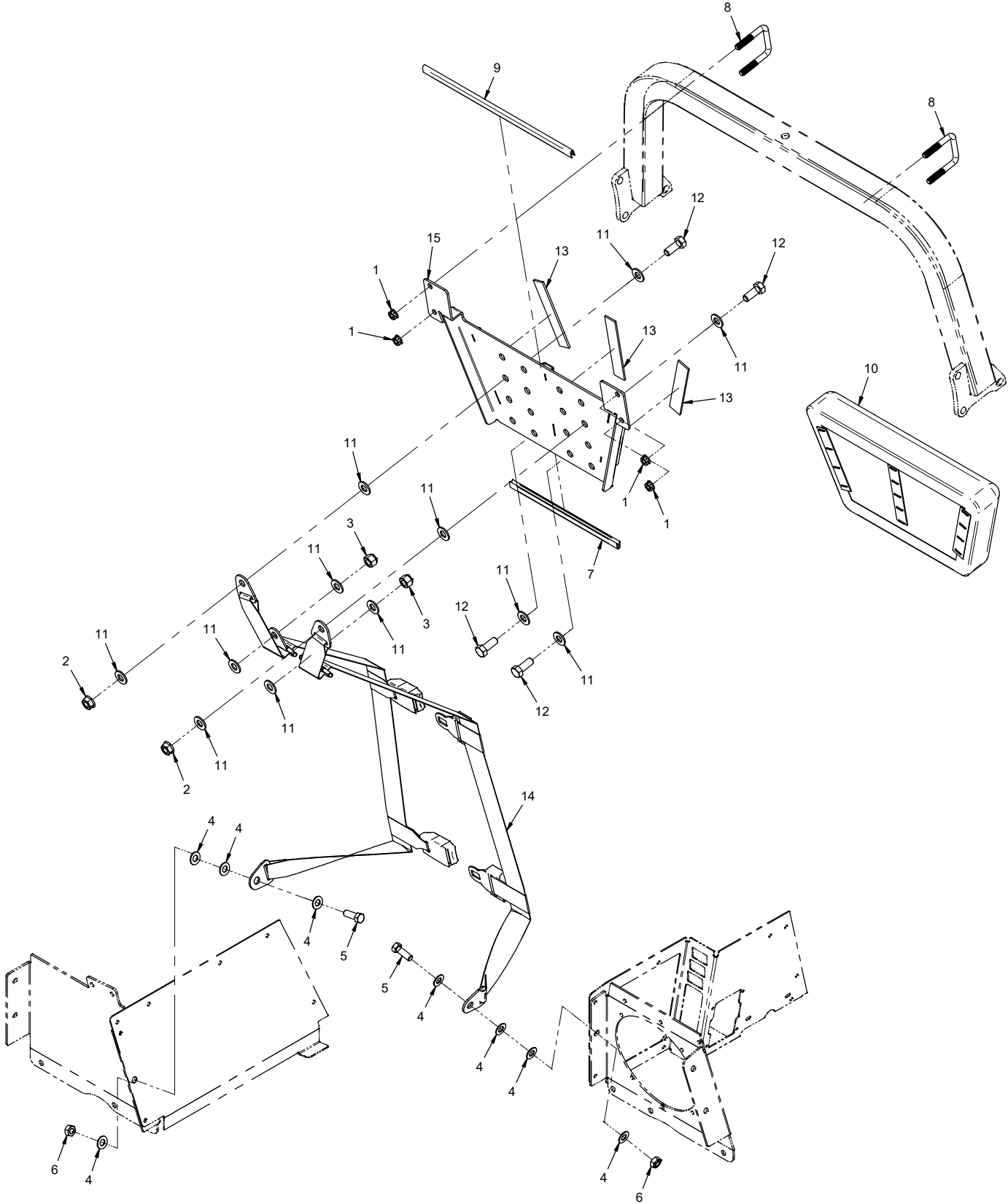
PARTS

Lower Right Window

REF.	PART NO.	DESCRIPTION	QTY.
1	99.SF04	.NUT, SRF 1/4-20 USS	4
2	94.04	.WASHER, FLAT 1/4 USS	6
3	85.B0098	.BUSHING, STEP 1/4 X 7/8 X 5/16H	8
4	99.K0119	.BOLT, STEP 1/4-20 X 1-1/2 BLK	4
5	05.0166	.SPACER, 1/4 X 1/2 X 3/8L	4
6	44.0296	.WINDOW, RIGHT LOWER 3/16	1
7	06.0072-88IN	.TRIM, SEAL DOUBLE BULB 3/16" X 88"	1
8	64.1495	.BRACKET, WINDOW RIGHT LOWER	1
9	06.0064-24IN	.WEATHERSTRIP, 1 X1 D-SHAPE X 24"L	1

PARTS

ILLUSTRATED DRAWING Four Point Seatbelt



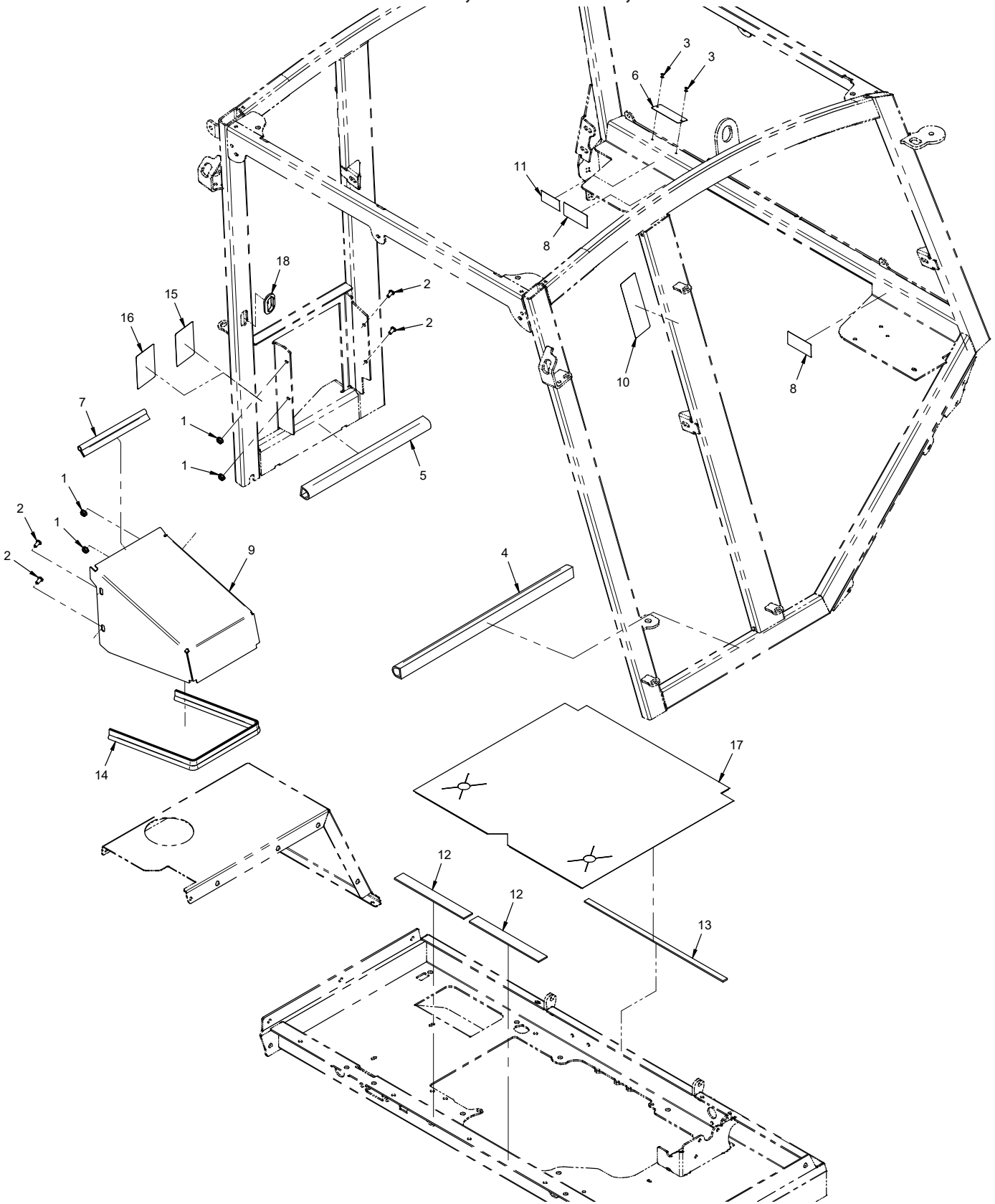
PARTS

Four Point Seatbelt

REF.	PART NO.	DESCRIPTION	QTY.
1	99.E0082	.NUT, LOCKING FLANGE 3/8-16	4
2	99.SF08	.NUT, SRF 1/2-13 USS	2
3	99.A08N	.LOCKNUT, NYLON 1/2-13 USS	2
4	95.07	.WASHER, FLAT 7/16 SAE	8
5	90.0710	.BOLT, 7/16-14 USS X 1-1/4	2
6	99.A07	.LOCKNUT, STOVER 7/16-14 USS	2
7	06.0050-11.88IN	.TRIM, TRIM LOC 1/2 X 3/16 X 11-7/8"	1
8	11.0053	.U-BOLT, 3/8-16 2-1/16" ID SQ	2
9	06.0050-14.88IN	.TRIM, TRIM LOC 1/2 X 3/16 X 14-7/8"	1
10	47.0288	.CUSHION, HEADREST	1
11	95.08	.WASHER, FLAT 1/2 SAE	12
12	90.0810	.BOLT, 1/2-13 USS X 1-1/4	4
13	06.0065-6IN	.VELCRO, LOOP 1" BLACK X 6"	3
14	47.0280	.SEAT BELT, 4 POINT	1
15	64.1490	.MOUNT, SEATBELT UPPER	1

PARTS

ILLUSTRATED DRAWING Fuel Tank Cover, Frame Seals, Decals



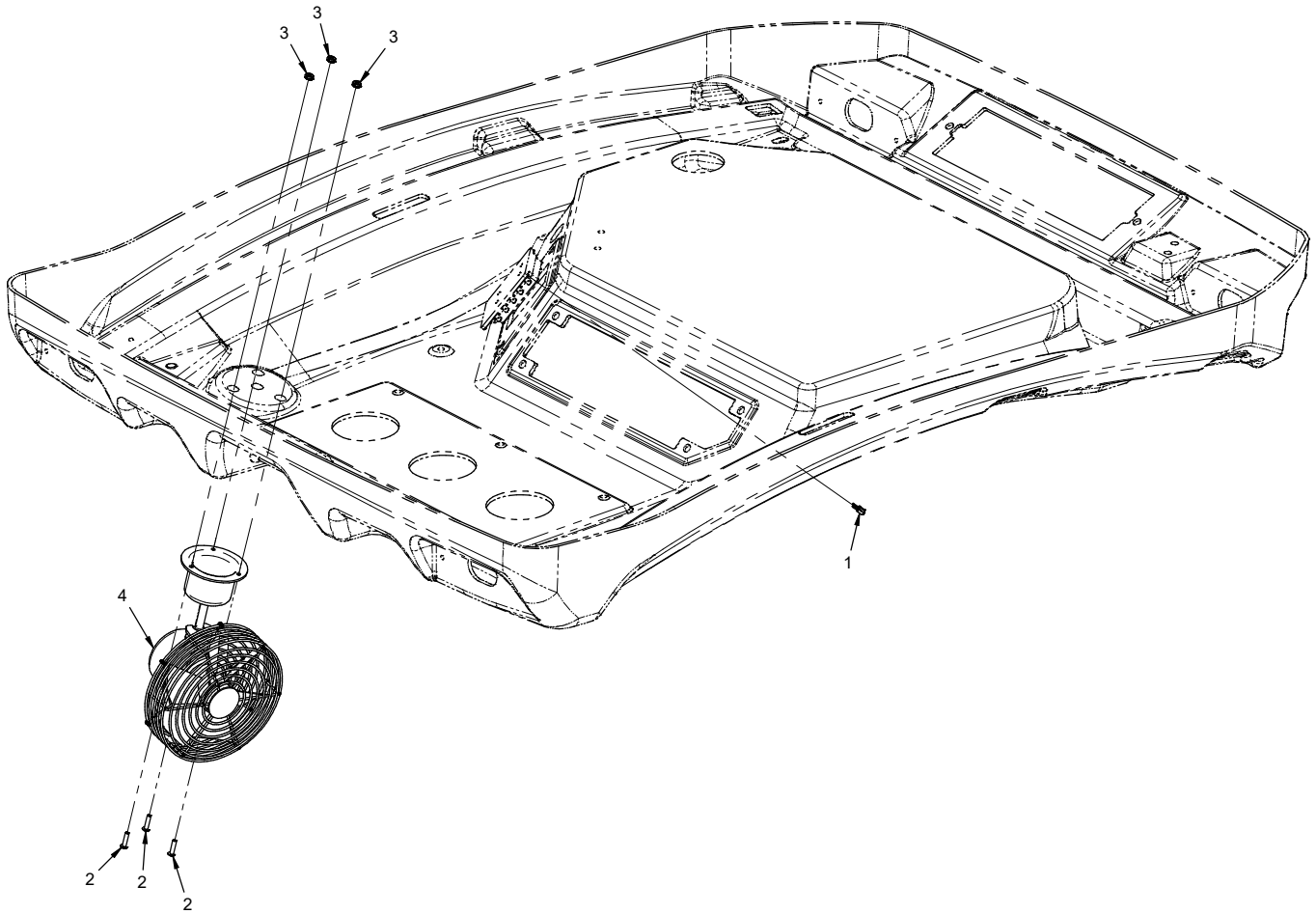
PARTS

Fuel Tank Cover, Frame Seals, Decals

REF.	PART NO.	DESCRIPTION	QTY.
1	99.SF04	NUT, SRF 1/4-20 USS	4
2	99.0404	BOLT, 1/4-20 X 1/2 BSCS	4
3	04.0029	RIVET, POP 1/8" X 1/4" SS	2
4	06.0064-20IN	WEATHERSTRIP, 1 X1 D-SHAPE X 20"	1
5	06.0064-14IN	WEATHERSTRIP, 1 X1 D-SHAPE X 14"	1
6	N/A	PLATE, VENTRAC SERIAL NUMBER	1
7	06.0043-7.5IN	TRIM, 7/16" BULB SEAL TOP 1/16T X 7-1/2"	1
8	00.0218	DECAL, WARNING PINCH POINT (Serial # 01001-04053)	2
8	00.0364	DECAL, WARNING PINCH POINT (Serial # 04054-)	2
9	60.1177	COVER, FUEL TANK KW450	1
10	00.0420	DECAL, WARNING	1
11	00.0100	DECAL, BUILT IN THE USA	1
12	06.0065-8IN	VELCRO, LOOP 1" BLACK X 8"	2
13	06.0071-16IN	VELCRO, LOOP 1/2" BLACK X 16"	1
14	06.0043-21.5IN	TRIM, 7/16" BULB SEAL TOP 1/16T X 21-1/2"	1
15	00.0332	DECAL, GASOLINE ONLY (Serial # 01001-04053)	1
15	00.0457	DECAL, GASOLINE SAFETY (Serial # 04054-)	1
16	00.0333	DECAL, DIESEL ONLY (Serial # 01001-04053)	1
16	00.0637	DECAL, DIESEL SAFETY (Serial # 04054-)	1
17	44.0327	CANVAS, REAR FRAME	1
18	05.0060	GROMMET, 1-1/8 ID, 1-3/4 OD	1

PARTS

ILLUSTRATED DRAWING 70.2006-6 Defrost Fan Kit



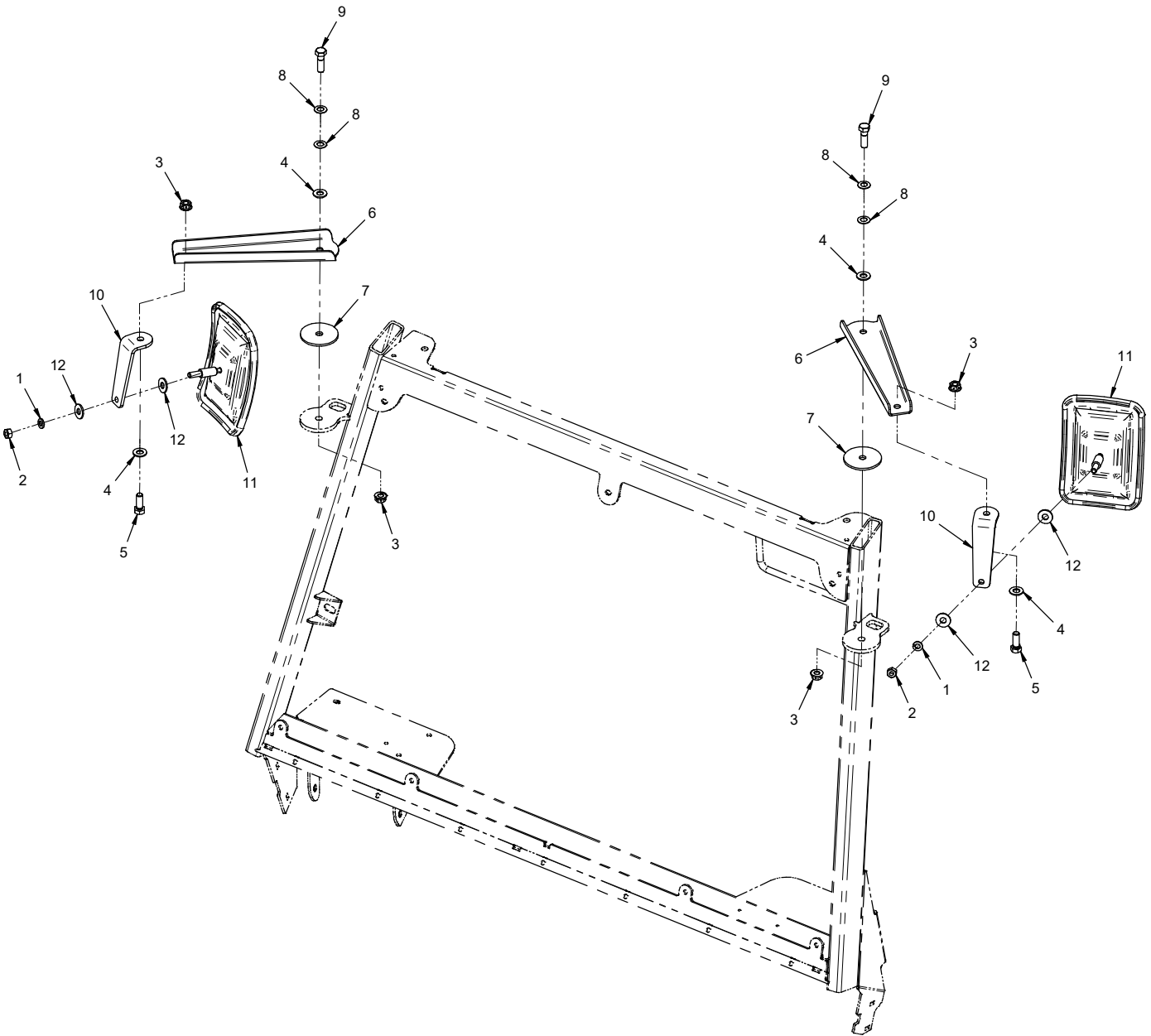
PARTS

70.2006-6 Defrost Fan Kit

REF.	PART NO.	DESCRIPTION	QTY.
1	30.0317	FUSE, 10 AMP ATC BLADE - RED	1
2	99.K0047	MACHINE SCREW, #10-32 X 3/4.	3
3	99.E0049	NUT, WASHER #10-32 (STAR NUT)	3
4	37.0051	FAN, DEFROSTER	1

PARTS

ILLUSTRATED DRAWING 70.2006-4 Mirror Kit



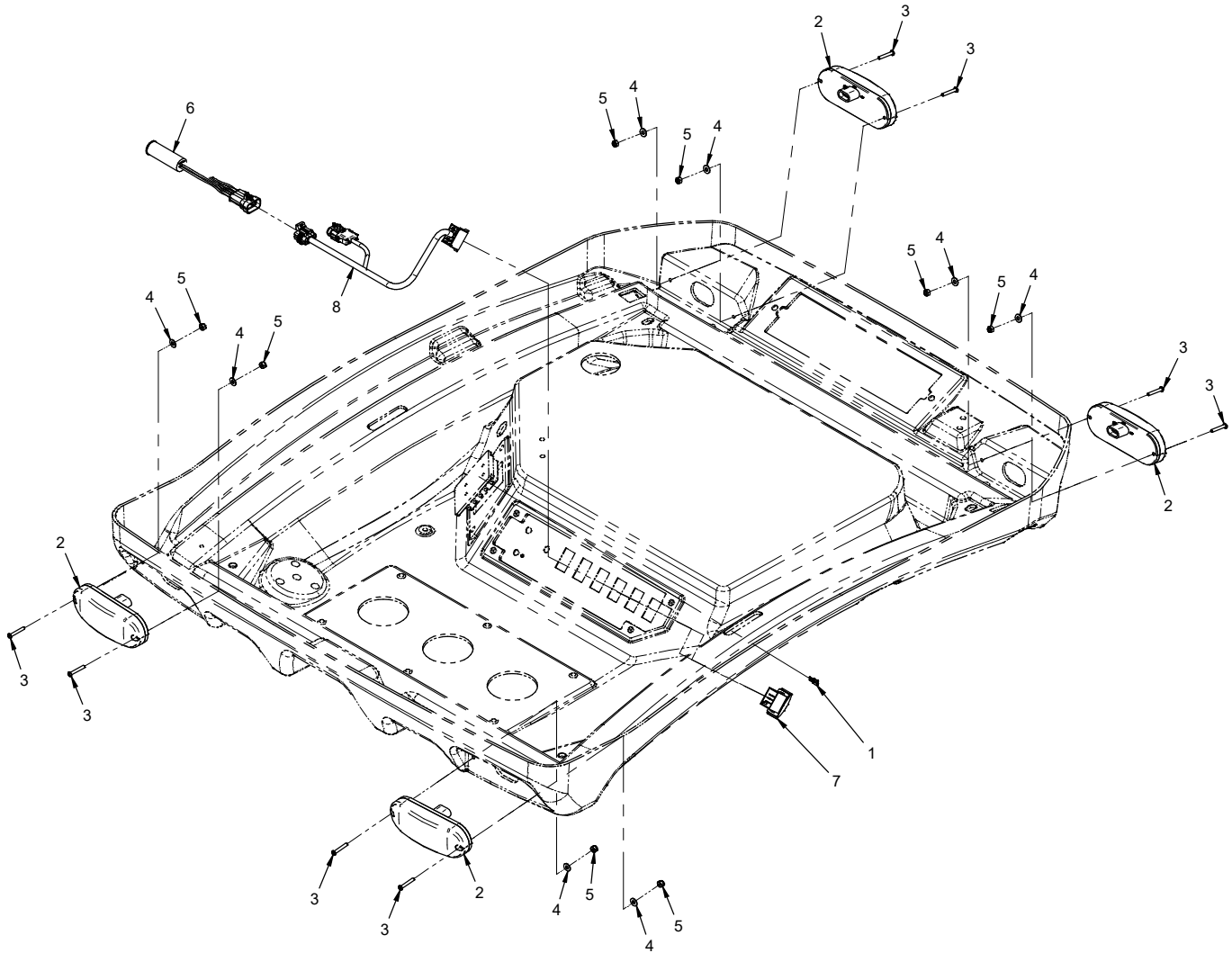
PARTS

70.2006-4 Mirror Kit

REF.	PART NO.	DESCRIPTION	QTY.
1	96.05	.WASHER, LOCK 5/16	2
2	99.M0025	.NUT, M8 X 1.25MM	2
3	99.E0082	.NUT, LOCKING FLANGE 3/8-16	4
4	95.06	.WASHER, FLAT 3/8 SAE	4
5	90.0608	.BOLT, 3/8-16 USS X 1	2
6	64.1496	.BRACKET, MIRROR ARM	2
7	05.0002	.WASHER, FRIC. 2-1/4 X 3/8	2
8	41.0099	.SPRING, DISC 3/8 ID X 3/4 OD	4
9	90.0610	.BOLT, 3/8-16 USS X 1-1/4	2
10	64.1497	.BRACKET, MIRROR MOUNT	2
11	47.0290	.MIRROR, CONVEX 5" X 7"	2
12	94.05	.WASHER, FLAT 5/16 USS	4

PARTS

ILLUSTRATED DRAWING 70.8162 Cab Hazard Lights Kit



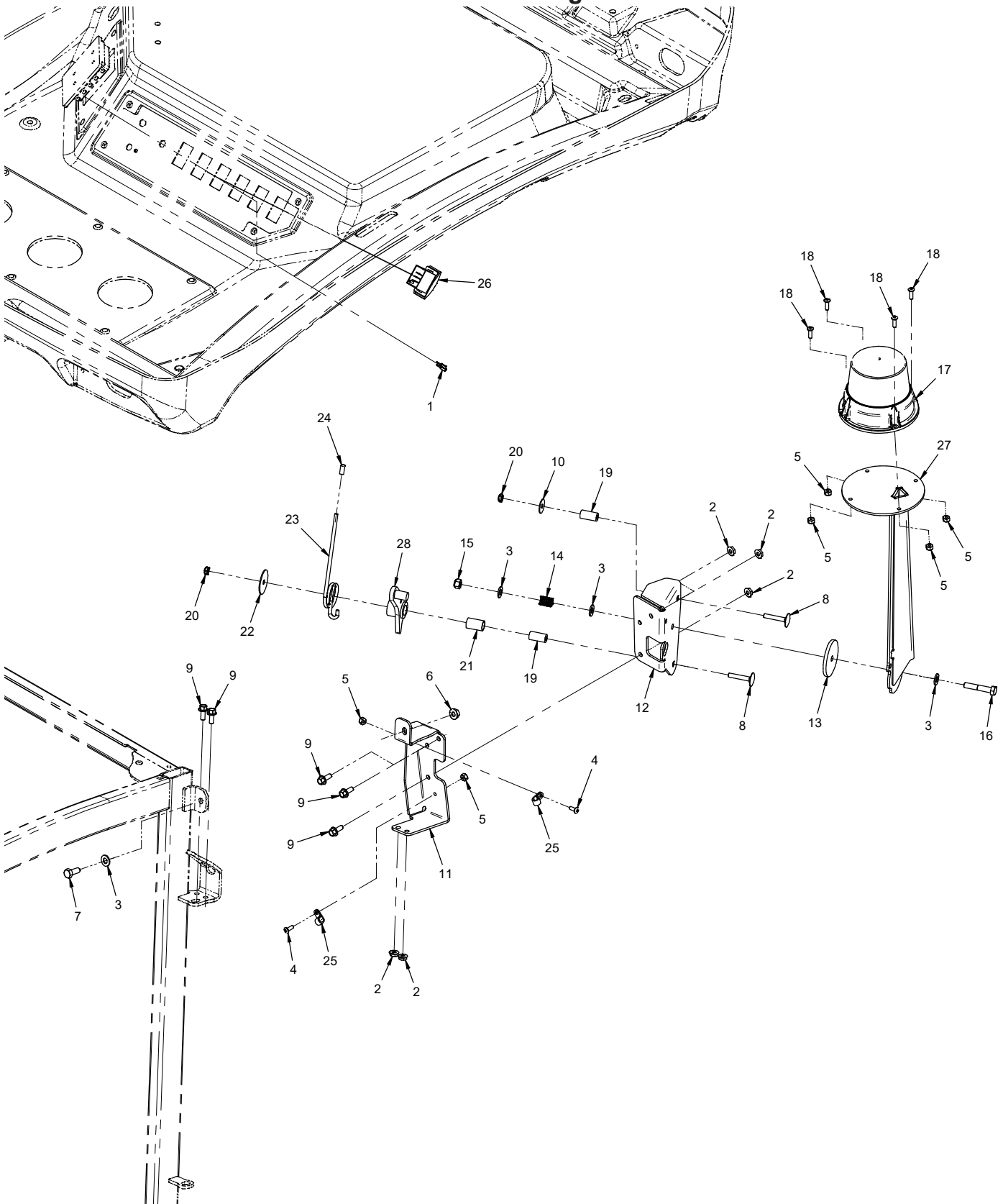
PARTS

70.8162 Cab Hazard Lights Kit

REF.	PART NO.	DESCRIPTION	QTY.
1	30.0187	.FUSE, 5 AMP ATC BLADE - TAN	1
2	33.0070	.LIGHT, SIGNAL AMBER	4
3	99.K0144	.MACHINE SCREW, #10-32 X 1-1/4	8
4	99.B0051	.WASHER, FLAT #10	8
5	99.A1032N	.LOCKNUT, NYLON 10-32 STAINLESS	8
6	35.0127	.MODULE, DIRECTIONAL LIGHT	1
7	31.0053	.SWITCH, ROCKER ON/OFF	1
8	32.0176	.HARNESS, WIRE HAZARD	1

PARTS

ILLUSTRATED DRAWING 70.8161 Strobe Light Kit



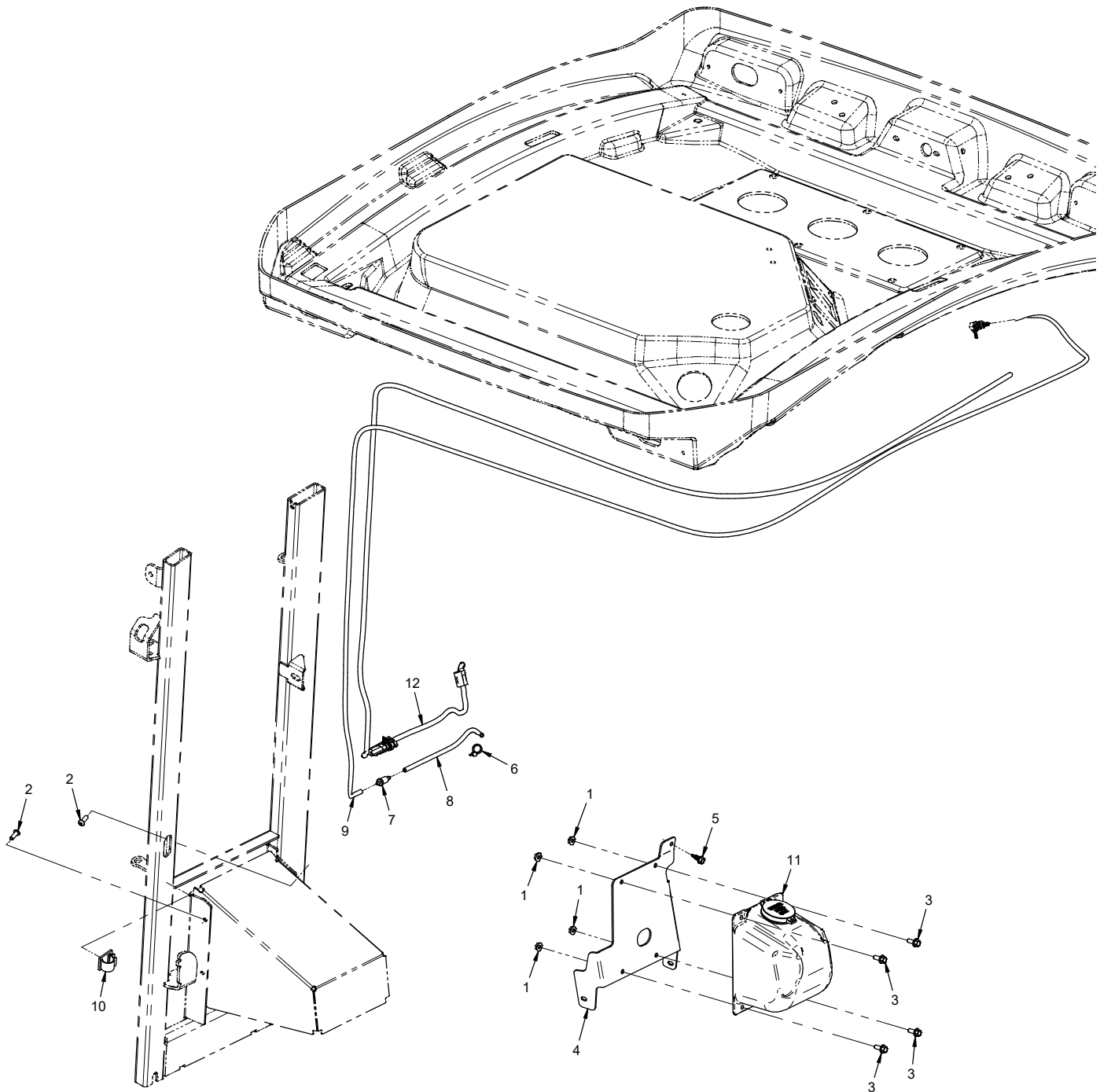
PARTS

70.8161 Strobe Light Kit

REF.	PART NO.	DESCRIPTION	QTY.
1	30.0187	.FUSE, 5 AMP ATC BLADE - TAN	1
2	99.SF04	.NUT, SRF 1/4-20 USS	5
3	95.05	.WASHER, FLAT 5/16 SAE	4
4	99.K0062	.MACHINE SCREW, #10-32 X 1/2	2
5	99.A1032N	.LOCKNUT, NYLON 10-32 STAINLESS	6
6	99.SF05	.NUT, SRF 5/16-18 USS	1
7	90.0506	.BOLT, 5/16-18 USS X 3/4"	1
8	99.K0119	.BOLT, STEP 1/4-20 X 1-1/2 BLK	2
9	99.SF0405-1	.BOLT, SMF 1/4-20 X 5/8	5
10	99.B0100	.WASHER, FENDER 1/4 X 7/8 OD ZP	1
11	64.1949	.BRACKET, STROBE MOUNT KW452	1
12	64.1946	.BRACKET, STROBE PIVOT / LATCH	1
13	05.0167	.WASHER, FRIC. 2.25X0.34X3/16T	1
14	41.0108	.SPRING, COMP. .531 OD X .780 LG.	1
15	99.A05N	.LOCKNUT, NYLON 5/16-18 USS	1
16	90.0514	.BOLT, 5/16-18 USS X 1-3/4"	1
17	33.0073	.LIGHT, STROBE AMBER	1
18	99.K0071	.MACHINE SCREW, #10-32 X 5/8	4
19	64.1948	.BUSHING, SPRING ARM	2
20	99.A04	.LOCKNUT, STOVER 1/4-20 USS	2
21	85.B0062	.BUSHING, 1/2 ID X 5/8 OD X 1	1
22	99.B0115	.WASHER, FENDER 1/4 X 1-1/2	1
23	41.0083-1	.SPRING, TORSION RH 1-3/16X5.18	1
24	06.0083	.CAP, VINYL 3/16" ID X 1/2	1
25	30.0143	.CLAMP, WIRE MT 5/16 NYLON WHT	2
26	31.0053	.SWITCH, ROCKER ON/OFF	1
27	62.1469	.FRAME, STROBE PIVOT ARM	1
28	40.0402	.ARM, SPRING LATCH	1

PARTS

ILLUSTRATED DRAWING 70.8148 Windshield Washer Kit



PARTS

70.8148 Windshield Washer Kit

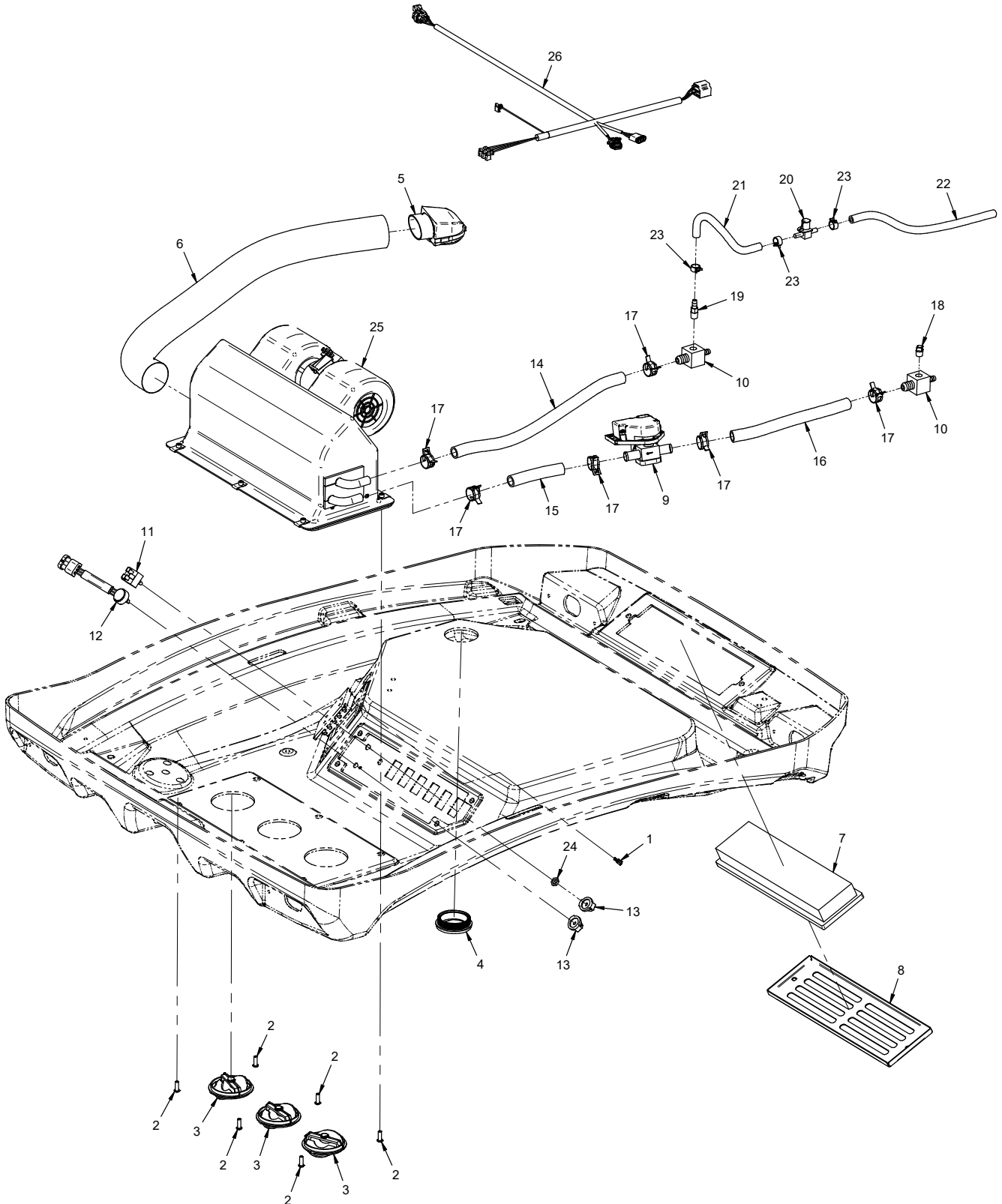
REF.	PART NO.	DESCRIPTION	QTY.
1	99.SF04	.NUT, SRF 1/4-20 USS	4
2	99.0406	.BOLT, 1/4-20 X 3/4 BSCS	2
3	99.SF0405-1	.BOLT, SMF 1/4-20 X 5/8	4
4	64.1954	.MOUNT, WINDSHIELD WASHER TANK	1
5	99.K0141	.SCREW, SELF DRILLING 1/4 X 3/4	1
6	30.0037	.TYTON TIE, #50 .18 X 8 BLACK	4
7	23.0169	.VALVE, CHECK 5/32" INLINE	1
8	27.0003	.TUBING, WINDSHIELD WASHER X 1'	1
9	27.0002	.TUBING, WINDSHIELD WASHER X 12'	1
10	30.0498	.CLAMP, WIRE MT ADH. 3/4" GRAY	1
11	47.0382	.RESERVOIR, WINDSHIELD WASHER	1
12	32.0175	.HARNES, WIRE WINDSHLD WASHER.	1

PARTS

ILLUSTRATED DRAWING

70.8160 Console Fan/Heater Kit

(Cabs with serial # 01287 and higher include the heater as standard equipment)



PARTS

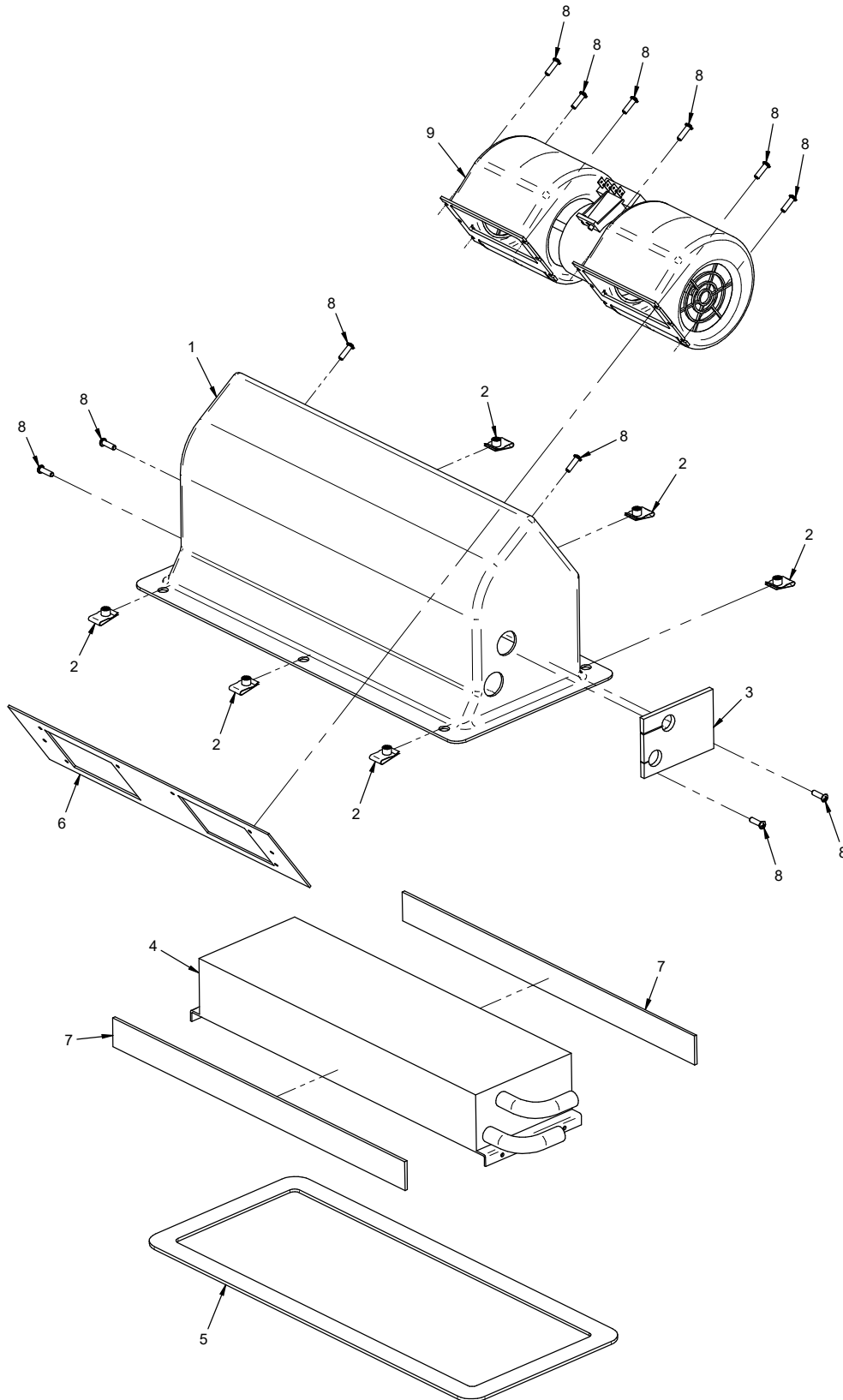
70.8160 Console Fan/Heater Kit

(Cabs with serial # 01287 and higher include the heater as standard equipment)

REF.	PART NO.	DESCRIPTION	QTY.
1	30.0317	.FUSE, 10 AMP ATC BLADE - RED	1
2	99.0406	.BOLT, 1/4-20 X 3/4 BSCS	6
3	47.0380	.VENT, LOUVER 3"	3
4	47.0390	.VENT, LOUVER 2-1/2"	1
5	47.0391	.DUCT, 90 DEG FOR 47.0390	1
6	47.0392	.DUCT, FLEXIBLE 2-1/2"	1
7	47.0383	.FILTER, AIR	1
8	47.0384	.RETAINER, AIR FILTER VENTED	1
9	47.0389	.VALVE, ELECTRONIC TEMP CONTROL	1
10	29.BF0610FP04	.FITTING, TEE 3/8 X 5/8 X 04NPT	2
11	31.0066	.SWITCH, FAN SPEED	1
12	31.0067	.SWITCH, TEMPERATURE	1
13	47.0386	.KNOB, FAN SPEED / TEMPERATURE	2
14	47.0405	.HOSE, HEATER 5/8 X 20" L	1
15	47.0404	.HOSE, HEATER 5/8 X 5" L	1
16	47.0406	.HOSE, HEATER 5/8 X 23" L	1
17	11.0079	.CLAMP, SPRING 5/8" HEATER HOSE	6
18	29.P04	.PIPE, PLUG 1/4" SQ	1
19	29.BF05MP04	.FITTING, 5/16 BARB X 1/4 MP ST	1
20	47.0328	.VALVE, FUEL SHUT OFF 5/16"	1
21	27.F05-6IN	.HOSE, FUEL LINE X 5/16 X 6"	1
22	27.F05-18IN	.HOSE, FUEL LINE X 5/16 X 18"	1
23	11.0048	.CLAMP, HOSE BAND 9/16" OD HOSE	3
24	99.E0121	.NUT, PANEL 7/16-28 UNEF	1
25	N/A	.HEATER, BLOWER ASSEMBLY	1
26	32.0174	.HARNES, WIRE HEATER KIT	1

PARTS

ILLUSTRATED DRAWING Heater Blower Assembly



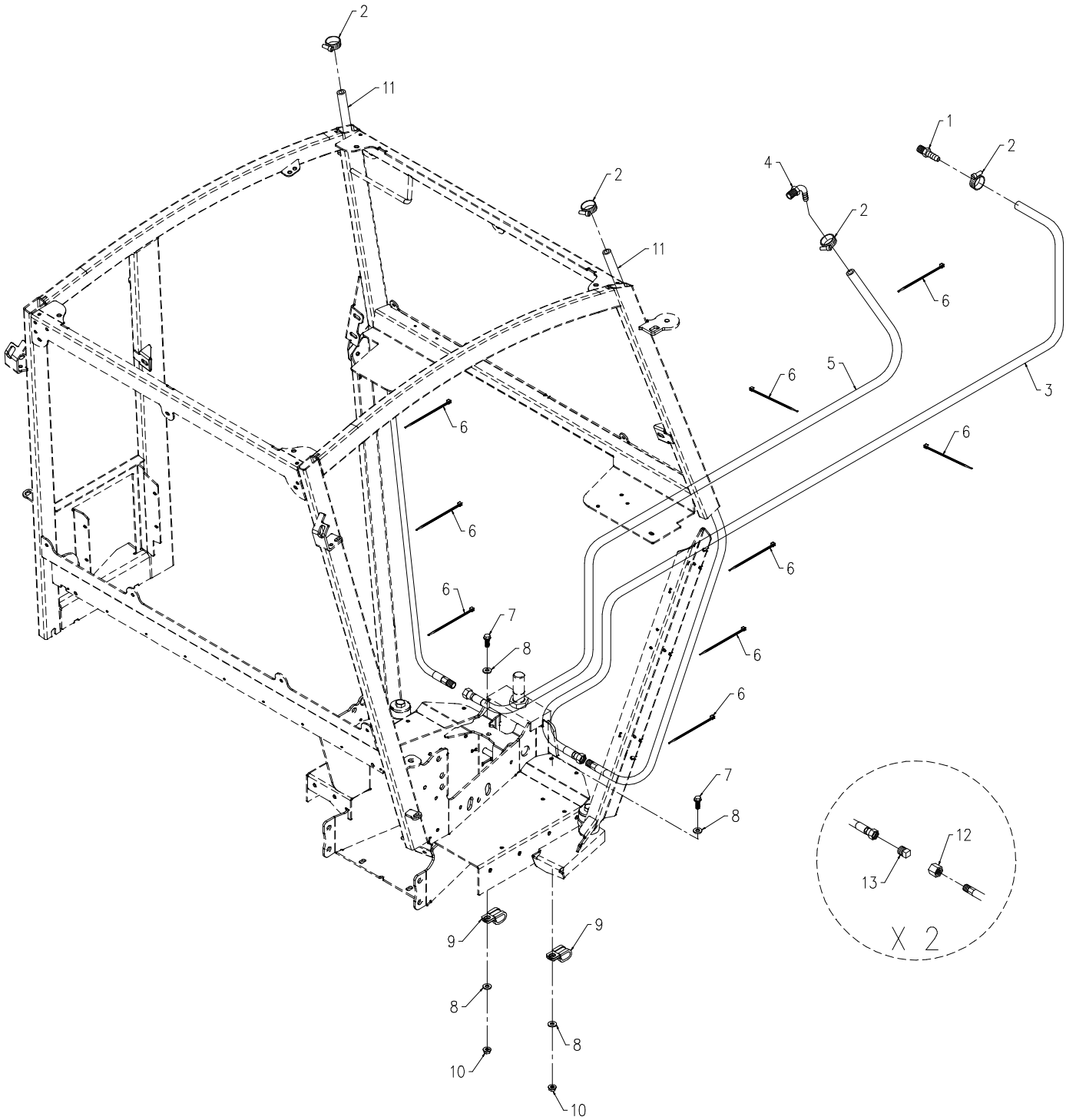
PARTS

Heater Blower Assembly

REF.	PART NO.	DESCRIPTION	QTY.
1	47.0407	.HOUSING, HEATER	1
2	99.E0046	.NUT, "U" 1/4-20 EXTRUDED	6
3	44.0386	.FOAM, COIL SEAL	1
4	47.0387	.CORE, HEATER	1
5	44.0366	.GASKET, BLOWER HOUSING	1
6	47.0408	.PLATE, BLOWER BRACKET	1
7	44.0387	.FOAM, HEATER CORE SEAL	2
8	99.K0147	.SCREW, #8 X 5/8 FOR PLASTIC	12
9	47.0394	.BLOWER, HEATER	1

PARTS

ILLUSTRATED DRAWING 70.8136 Kubota Heater Install Kit 4500Y, 4500Z, 4520Y, and 4520Z



PARTS

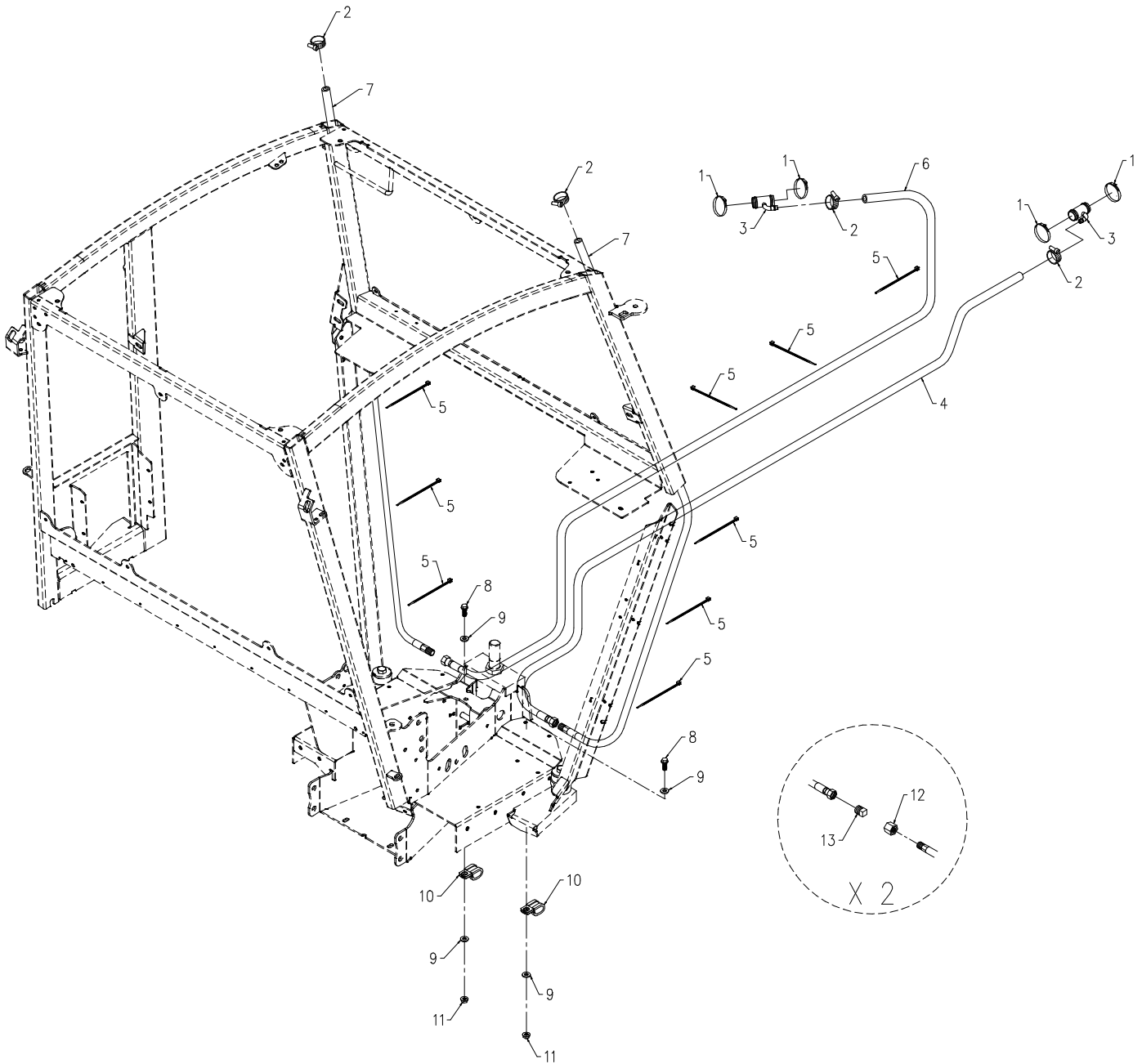
70.8136 Kubota Heater Install Kit 4500Y, 4500Z, 4520Y, and 4520Z

REF.	PART NO.	DESCRIPTION	QTY.
1	29.BF06MBSPT06	.FITTING, 3/8 BRB X 3/8 M BSPT	1
2	11.0032	.CLAMP, HOSE SS 7/16 TO 25/32	4
3	22.0064	.HOSE, 3/8x45.00 HTR SAE J20R3	1
4	29.BF06MP0490	.FITTING, 3/8 BARB X 1/4 MP 90	1
5	22.0065	.HOSE, 3/8x28.50 HTR SAE J20R3	1
6	30.0037	.TYTON TIE, #50 .18 X 8 BLACK	10
7	99.SF0406	.BOLT, SRF 1/4-20 X 3/4	2
8	94.04	.WASHER, FLAT 1/4 USS	4
9	11.0046	.CLAMP, CUSHIONED 1/2" 2-TUBE	2
10	99.SF04	.NUT, SRF 1/4-20 USS	2
11	22.0045	.HOSE, 3/8x94.00 HTR SAE J20R3	2
12	25.304-C-06^	.FITTING, CAP 3/8 #6 JIC	2
13	25.2408-06^	.FITTING, PLUG -6 MJIC	2

^These fittings are used to plug the hoses when the cab is removed from the power unit.

PARTS

ILLUSTRATED DRAWING 70.8137 Kawasaki Heater Install Kit 4500P and 4520P



PARTS

70.8137 Kawasaki Heater Install Kit 4500P and 4520P

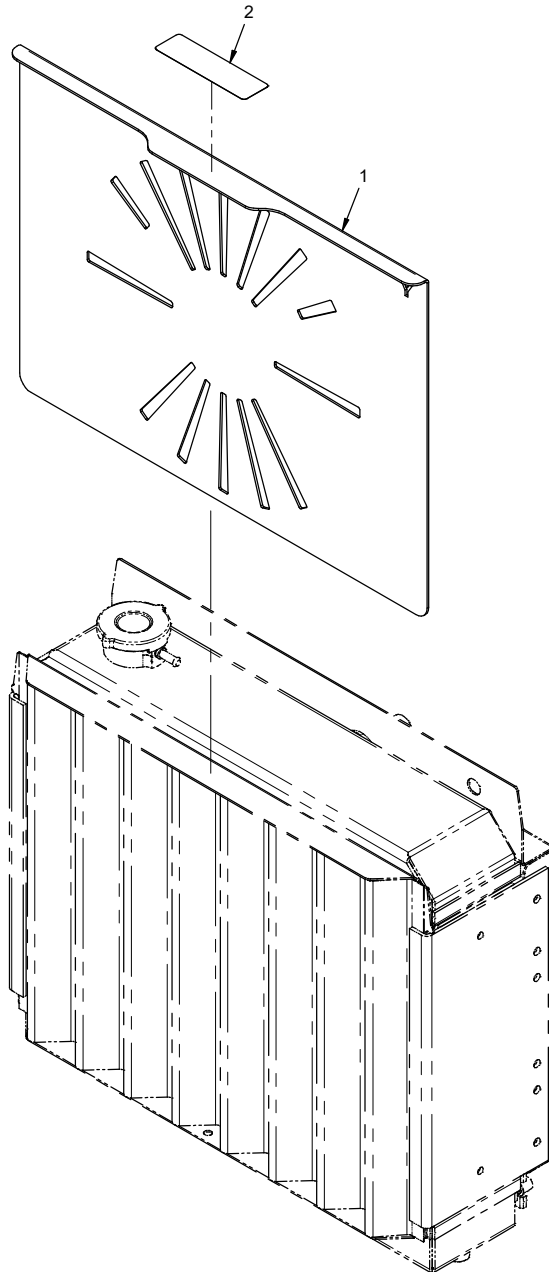
REF.	PART NO.	DESCRIPTION	QTY.
1	11.0052	.CLAMP, HOSE SS 13/16 TO 1-1/2	4
2	11.0032	.CLAMP, HOSE SS 7/16 TO 25/32	4
3	47.0293	.TUBE, KAW. RAD. W/HEATER PORT	2
4	22.0048	.HOSE, 3/8x38.00 HTR SAE J20R3	1
5	30.0037	.TYTON TIE, #50 .18 X 8 BLACK	10
6	22.0046	.HOSE, 3/8x50.00 HTR SAE J20R3	1
7	22.0045	.HOSE, 3/8x94.00 HTR SAE J20R3	2
8	99.SF0406	.BOLT, SRF 1/4-20 X 3/4	2
9	94.04	.WASHER, FLAT 1/4 USS	4
10	11.0046	.CLAMP, CUSHIONED 1/2" 2-TUBE	2
11	99.SF04	.NUT, SRF 1/4-20 USS	2
12	25.304-C-06^	.FITTING, CAP 3/8 #6 JIC	2
13	25.2408-06^	.FITTING, PLUG -6 MJIC	2

^These fittings are used to plug the hoses when the cab is removed from the power unit.

PARTS

ILLUSTRATED DRAWING

70.4146 Kubota Radiator Baffle Kit
4520Y, 4520Z, 4500Y, and 4500Z (Serial # 05311-)



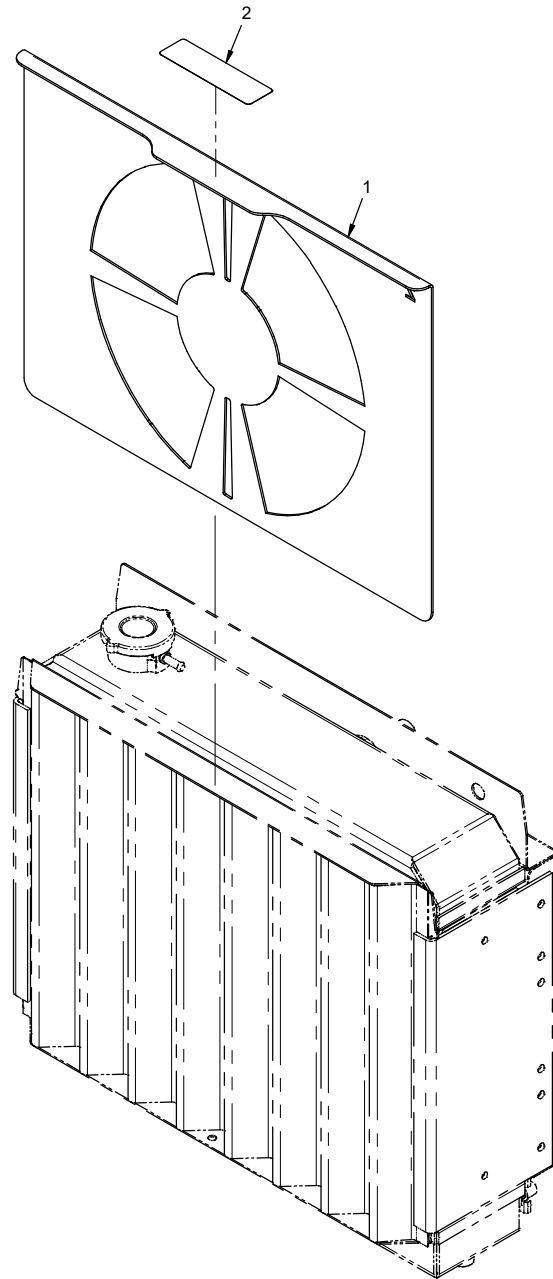
PARTS

**70.4146 Kubota Radiator Baffle Kit
4520Y, 4520Z, 4500Y, and 4500Z (Serial # 05311-)**

REF.	PART NO.	DESCRIPTION	QTY.
1	70.4146	.KIT, RADIATOR BAFFLE 4500Y	1
2	00.0422	.DECAL, CAUTION 4500Y	1

PARTS

ILLUSTRATED DRAWING 70.4147 Kubota Radiator Baffle Kit 4500Z (Serial # 01001-05310)



PARTS

70.4147 Kubota Radiator Baffle Kit 4500Z (Serial # 01001-05310)

REF.	PART NO.	DESCRIPTION	QTY.
1	70.4147	.KIT, RADIATOR BAFFLE 4500Z	1
2	00.0423	.DECAL, CAUTION 4500Z	1