



Operator's Manual

# DG550

Ballpark Renovator





500 Venture Drive  
Orrville, OH 44667  
www.ventrac.com

### To the Owner Contact Information and Product Identification

If you need to contact an authorized Ventrac dealer for information on servicing your product, always provide the product model and serial numbers.

Please fill in the following information for future reference. See the picture(s) below to find the location of the identification numbers. Record them in the spaces provided.

Dealer \_\_\_\_\_ Date of Purchase: \_\_\_\_\_

Dealer Address: \_\_\_\_\_  
\_\_\_\_\_

Dealer Phone Number: \_\_\_\_\_ Dealer Fax Number: \_\_\_\_\_

With your mobile device, you can scan the QR code on the serial number plate to access manuals, warranty, and other product information.



Model # \_\_\_\_\_

Serial # \_\_\_\_\_



Venture Products Inc. reserves the right to make changes in design or specifications without obligation to make like changes on previously manufactured products.

# TABLE OF CONTENTS

---

<b>INTRODUCTION</b>	<b>PAGE 4</b>
Product Description . . . . .	4
Why Do I Need an Operator’s Manual? . . . . .	4
Using Your Manual . . . . .	5
Manual Glossary . . . . .	5
<b>SAFETY</b>	<b>PAGE 6</b>
General Safety Procedures . . . . .	6
Training Required . . . . .	6
Requirements for Personal Protective Equipment (PPE) . . . . .	6
Operation Safety. . . . .	6
Keep Riders Off . . . . .	8
Operating On Slopes . . . . .	8
Truck Or Trailer Transport . . . . .	9
Maintenance . . . . .	9
Fuel Safety . . . . .	10
Hydraulic Safety . . . . .	11
DG550 Safety Procedures. . . . .	12
Safety Decals . . . . .	13
<b>OPERATIONAL CONTROLS</b>	<b>PAGE 14</b>
Renovator Blades . . . . .	14
Scarifier Spring Tines . . . . .	14
Leveling Bar . . . . .	15
<b>GENERAL OPERATION</b>	<b>PAGE 16</b>
Daily Inspection . . . . .	16
Attaching . . . . .	16
Detaching. . . . .	16
Operating Procedures and Tips . . . . .	16
Transport of the Attachment. . . . .	18
<b>SERVICE</b>	<b>PAGE 19</b>
Cleaning and General Maintenance. . . . .	19
Scarifier Tine Replacement . . . . .	19
Renovator Blade Replacement. . . . .	19
Lubrication Locations . . . . .	20
Storage . . . . .	20
Maintenance Schedule . . . . .	21
Maintenance Checklist . . . . .	21
<b>SPECIFICATIONS</b>	<b>PAGE 22</b>
Dimensions. . . . .	22
Features. . . . .	22

# INTRODUCTION



Venture Products Inc. is pleased to provide you with your new Ventrac DG550 ballpark renovator! We hope that Ventrac equipment will provide you with a ONE Tractor Solution.

Please visit our website, or contact your authorized Ventrac dealer for a complete list of items available for your new ballpark renovator.

Scan the QR code or visit <http://ventrac.com/QR/groomer> for an operation overview video of the ballpark groomer and renovator.



Accessories	Item Description	Part Number
	Mid Weight Bar Kit	70.4137

## Product Description

The Ventrac DG550 ballpark renovator is designed solely for the purposes of renovating and maintaining ballpark infields. The DG550 includes features for weed management, edge line shaping, scarifying, and field leveling. When used with the three point hitch mounted Ventrac DR540 ballpark groomer, the Ventrac ballpark system can provide complete care for infield renovation, maintenance, and grooming.

The DG550 ballpark renovator can be used with any Ventrac 4000 series power unit.

## Why Do I Need an Operator's Manual?

This manual has been created to help you gain the important knowledge of what is needed to safely operate and maintain your machine, and to avoid injury and product damage. It is divided into chapters for convenient reference of the appropriate information.

You must read and understand the operator's manual for each piece of Ventrac equipment you own. Reading the operator's manual will help you become familiar with each specific piece of equipment. If this manual becomes damaged or unreadable, it should be replaced immediately. Contact your local Ventrac dealer for a replacement.

When using a Ventrac attachment, be sure to read and follow the safety and operating instructions of both the power unit and the attachment being used to ensure the safest operation possible.

The information in this manual provides the operator with the safest procedures to operate the machine while getting the maximum use out of the unit. Failure to follow the safety precautions listed in this manual may result in personal injury and/or damage to the equipment.

# INTRODUCTION

## Using Your Manual

This manual identifies potential hazards and safety concerns to help you, as well as others, avoid personal injury and/or damage to the equipment.

Safety should always be the first priority when working on or operating equipment. Accidents are more likely to occur when proper operating procedures are not followed or inexperienced operators are involved.

### SYMBOL DEFINITIONS



This symbol identifies potential health and safety hazards. It marks safety precautions. Your safety and the safety of others is involved.

There are three signal words that describe the level of safety concern: Danger, Warning, and Caution.

### SIGNAL WORD DEFINITIONS

#### **DANGER**

Indicates an imminently hazardous situation which, if not avoided, will result in death or serious injury. This signal word is limited to the most extreme cases.

#### **WARNING**

Indicates a potentially hazardous situation which, if not avoided, could result in death or serious injury.

#### **CAUTION**

Indicates a potentially hazardous situation which, if not avoided, may result in minor or moderate injury and/or property damage. It may also be used to alert against unsafe practices.

This manual also uses two words to highlight information. **ATTENTION** calls attention to special mechanical information to prevent equipment damage and/or best practices for equipment service and care.

**NOTE** emphasizes general information that is worthy of special attention.

NOTE: Right-Hand and Left-Hand orientations may be referred to at different places throughout this manual. Right-Hand and Left-Hand is determined as if facing forward from the operator station.

## Manual Glossary

- Power Unit** A Ventrac tractor or other Ventrac engine powered device that may be operated by itself or with an attachment or accessory.
- Attachment** A piece of Ventrac equipment that requires a Power Unit for operation.
- Accessory** A device that attaches to a Power Unit or Attachment to extend its capabilities.
- Machine** Describes any "Attachment" or "Accessory" that is used in conjunction with a power unit.

# SAFETY

---



## General Safety Procedures for Ventrac Power Units, Attachments, & Accessories



### Training Required

- The owner of this machine is solely responsible for properly training the operators.
- The owner/operator is solely responsible for the operation of this machine and for the prevention of accidents or injuries occurring to him/herself, other people, or property.
- Do not allow operation or service by children or untrained personnel. Local regulations may restrict the age of the operator.
- Before operating this machine, read the operator's manual and understand its contents.
- If the operator of the machine cannot understand this manual, then it is the responsibility of this machine's owner to fully explain the material within this manual to the operator.
- Learn and understand the use of all the controls.
- Know how to stop the power unit and the attachments quickly in the event of an emergency.

### Requirements for Personal Protective Equipment (PPE)

- The owner is responsible for ensuring that all the operators use the proper PPE while operating the machine. Whenever you use the machine, use the following PPE:
- Certified eye protection and hearing protection.
- Closed toe, slip resistant footwear.
- Long pants or trousers.
- A dust mask for dusty conditions.
- Additional PPE may be required. Refer to the product safety procedures for any additional requirements.

### Operation Safety

- Secure long hair and loose clothing. Do not wear jewelry.
- Inspect the machine before operation. Repair or replace any damaged, worn, or missing parts. Be sure the guards and shields are in proper working condition and are secured in place. Make any necessary adjustments before operating the machine.
- Some pictures in this manual may show shields or covers opened or removed in order to clearly illustrate the instructions. Under no circumstance should the machine be operated without these devices in place.
- Alterations or modifications to this machine can reduce safety and could cause damage to the machine. Do not alter the safety devices or operate with the shields or covers removed.
- Before each use, verify that all the controls function properly and inspect all the safety devices. Do not operate if the controls or safety devices are not in proper working condition.
- Check the parking brake function before operating. Repair or adjust the parking brake if necessary.
- Observe and follow all of the safety decals.
- All the controls are to be operated from the operator's station only.

# SAFETY

---



## General Safety Procedures for Ventrac Power Units, Attachments, & Accessories



- Always wear a seat belt if the machine has a roll cage/bar installed and in the upright position.
- Ensure the attachment or accessory is locked or fastened securely to the power unit before operating.
- Ensure that all bystanders are clear of the power unit and the attachment before operating. Stop the machine if someone enters your work area.
- Always be alert to what is happening around you, but do not lose focus on the task you are performing. Always look in the direction the machine is moving.
- Look behind and down before backing up to be sure of a clear path.
- If you hit an object, stop and inspect the machine. Make any necessary repairs before operating the machine again.
- Stop operation immediately at any sign of equipment failure. An unusual noise can be a warning of equipment failure or a sign that maintenance is required. Make any necessary repairs before operating the machine again.
- If equipped with a high/low range feature, never shift between high and low range while on a slope. Always move the machine to level ground and engage the parking brake before shifting range.
- Do not leave the machine unattended while it is running.
- Always park the machine on level ground.
- Always shut off the engine when connecting the attachment drive belt to the power unit.
- Never leave the operator's station without lowering the attachment to the ground, engaging the parking brake, shutting off the engine, and removing the ignition key. Make sure all moving parts have come to a complete stop before dismounting.
- Never leave the machine unattended without lowering the attachment to the ground, engaging the parking brake, shutting off the engine, and removing the ignition key.
- Only operate in well-lit conditions.
- Do not operate when there is a risk of lightning.
- Never direct the discharge of any attachment in the direction of people, buildings, animals, vehicles, or other objects of value.
- Never discharge material against a wall or obstruction. The material may ricochet back toward the operator.
- Use extra caution when approaching blind corners, shrubs, trees, or other objects that may obscure your vision.
- Do not run the engine in a building without adequate ventilation.
- Do not touch the engine or the muffler while the engine is running or immediately after stopping the engine. These areas may be hot enough to cause a burn.
- Do not change the engine governor settings or over-speed the engine. Operating the engine at excessive speeds may increase the hazard of personal injury.
- To reduce the hazard of fire, keep the battery compartment, engine, and muffler areas free of grass, leaves, excessive grease, and other flammable materials.

# SAFETY

---



## General Safety Procedures for Ventrac Power Units, Attachments, & Accessories



- Clear the working area of objects that might be hit or thrown from the machine.
- Keep people and pets out of the working area.
- Know the work area well before operation. Do not operate where traction or stability is questionable.
- Reduce speed when you are operating over rough ground.
- Equipment can cause serious injury and/or death when improperly used. Before operating, know and understand the operation and safety of the power unit and the attachment being used.
- Do not operate the machine if you are not in good physical and mental health, if you will be distracted by personal devices, or if you are under the influence of any substance which might impair your decisions, dexterity, or judgment.
- Children are attracted to machine activity. Be aware of children and do not allow them in the work area. Turn off the machine if a child enters the work area.
- Power units, attachments, and accessories are not designed or intended for travel on public roadways. Never operate or travel on public roads or highways.
- Operate with safety lights when operating near roadways.
- Slow down and be careful of traffic when operating near or crossing roadways. Stop before crossing roads or sidewalks. Use care when approaching areas or objects that may obscure vision.

### Keep Riders Off

- Only allow the operator on the power unit. Keep riders off.
- Never allow riders on any attachment or accessory.

### Operating On Slopes

- Slopes can cause loss-of-control and tip-over accidents, which can result in severe injury or death. Be familiar with the emergency parking brake, along with the power unit controls and their functions.
- If the power unit is equipped with a fold down roll bar, it must be locked in the upright position when operating on any slope.
- Use low range (if equipped) when operating on slopes greater than 15 degrees.
- Do not stop or start suddenly when operating on slopes.
- Never shift between high and low range while on a slope. Always move the power unit to level ground and engage the parking brake before shifting range or placing the power unit in neutral.
- Variables such as wet surfaces and loose ground will reduce the degree of safety. Do not drive where the machine could lose traction or tip over.
- Keep alert for hidden hazards in the terrain.
- Stay away from drop-offs, ditches, and embankments.
- Sharp turns should be avoided when operating on slopes.



# SAFETY

---



## General Safety Procedures for Ventrac Power Units, Attachments, & Accessories



- Pulling loads on hills decreases safety. It is the responsibility of the owner/operator to determine loads that can safely be controlled on slopes.
- Transport the machine with the attachment lowered or close to the ground to improve stability.
- While operating on slopes, drive in an up and down direction whenever possible. If turning is necessary while driving across slopes, reduce your speed and turn slowly in the downhill direction.
- Ensure a sufficient supply of fuel for continuous operation. A minimum of one-half tank of fuel is recommended.

### Truck Or Trailer Transport

- Use care when loading or unloading the machine into a truck or trailer.
- Use full width ramps for loading the machine into a truck or trailer.
- The parking brake is not sufficient to lock the machine during transport. Always secure the power unit and/or attachment to the transporting vehicle securely using straps, chains, cables, or ropes. Both the front and rear straps should be directed down and outward from the machine.
- Shut off the fuel supply to the power unit during transport on a truck or trailer.
- If equipped, turn the battery disconnect switch to the Off position to shut off electrical power.

### Maintenance

- Keep the safety decals legible. Remove all grease, dirt, and debris from the safety decals and instructional labels.
- If any decals are faded, illegible, or missing, contact your dealer promptly for replacements.
- When new components are installed, be sure that the current safety decals are affixed to the replacement components.
- If any component requires replacement, use only original Ventrac replacement parts.
- Always turn the battery disconnect to the Off position or disconnect the battery before performing any repairs. Disconnect the negative terminal first and the positive terminal last. Reconnect the positive terminal first and the negative terminal last.
- Keep all bolts, nuts, screws, and other fasteners properly tightened.
- Always lower the attachment to the ground, engage the parking brake, shut off the engine, and remove the ignition key. Make sure all moving parts have come to a complete stop before cleaning, inspecting, adjusting, or repairing.
- If the power unit, attachment, or accessory requires repairs or adjustments not instructed in the operator's manual, the power unit, attachment, or accessory must be taken to an authorized Ventrac dealer for service.
- Never perform maintenance on the power unit and/or attachment if someone is in the operator's station.
- Always use protective glasses when handling the battery.
- Check the fuel lines for tightness and wear on a regular basis. Tighten or repair them as needed.
- To reduce the hazard of fire, keep the battery compartment, engine, and muffler areas free of grass, leaves,

# SAFETY

---



## General Safety Procedures for Ventrac Power Units, Attachments, & Accessories



and excess grease.

- Do not touch the engine, the muffler, or other exhaust components while the engine is running or immediately after stopping the engine. These areas may be hot enough to cause a burn.
- Allow the engine to cool before storing and do not store near an open flame.
- Do not change the engine governor settings or over-speed the engine. Operating engine at excessive speeds may increase the hazard of personal injury.
- Springs may contain stored energy. Use caution when disengaging or removing springs and/or spring loaded components.
- An obstruction or blockage in a drive system or moving/rotating parts may cause a buildup of stored energy. When the obstruction or blockage is removed, the drive system or moving/rotating parts may move suddenly. Do not attempt to remove an obstruction or blockage with your hands. Keep your hands, feet, and clothing away from all power-driven parts.

### Fuel Safety

- To avoid personal injury or property damage, use extreme care in handling gasoline. Gasoline is extremely flammable and the vapors are explosive.
- Do not refuel the machine while smoking or at a location near flames or sparks.
- Always refuel the machine outdoors.
- Do not store the machine or fuel container indoors where the fumes or fuel can reach an open flame, spark, or pilot light.
- Only store fuel in an approved container. Keep out of the reach of children.
- Never fill containers inside a vehicle or on a truck or trailer bed with a plastic liner. Always place the containers on the ground away from your vehicle before filling.
- Remove the machine from the truck or trailer and refuel it on the ground. If this is not possible, refuel the machine using a portable container, rather than from a fuel dispenser nozzle.
- Never remove the fuel cap or add fuel with the engine running. Allow the engine to cool before refueling.
- Never remove the fuel cap while on a slope. Only remove the fuel cap when parked on a level surface.
- Replace the fuel tank cap and the container cap securely.
- Do not overfill the fuel tank. Only fill to the bottom of the fuel neck, do not fill the fuel neck full. Overfilling of the fuel tank could result in engine flooding, fuel leakage from the tank, and/or damage to the emissions control system.
- If fuel is spilled, do not attempt to start the engine. Move the power unit away from the fuel spill and avoid creating any source of ignition until the fuel vapors have dissipated.
- If the fuel tank must be drained, it should be drained outdoors into an approved container.
- Check the fuel lines for tightness and wear on a regular basis. Tighten or repair them as needed.
- The fuel system is equipped with a shut-off valve. Shut off the fuel when transporting the machine to and from the job, when parking the machine indoors, or when servicing the fuel system.

# SAFETY

---



## General Safety Procedures for Ventrac Power Units, Attachments, & Accessories



### Hydraulic Safety

- Make sure the hydraulic connections are tight and all hydraulic hoses and tubes are in good condition. Repair any leaks and replace any damaged or deteriorated hoses or tubes before starting the machine.
- Hydraulic leaks can occur under high pressure. Hydraulic leaks require special care and attention.
- Use a piece of cardboard and a magnifying glass to locate suspected hydraulic leaks.
- Keep your body and hands away from pinhole leaks or nozzles that eject high pressure hydraulic fluid. Hydraulic fluid escaping under high pressure can penetrate the skin causing serious injury, leading to severe complications and/or secondary infections if left untreated. If hydraulic fluid is injected into the skin, seek immediate medical attention no matter how minor the injury appears.
- The hydraulic system may contain stored energy. Before performing maintenance or repairs on the hydraulic system, remove any attachments, engage the parking brake, disengage the weight transfer system (if equipped), shut off the engine, and remove the ignition key. To relieve pressure on the auxiliary hydraulic system, shut off the power unit engine and move the hydraulic control lever left and right before disconnecting the auxiliary hydraulic quick couplers.

# SAFETY

---



## DG550 Safety Procedures



- The ballpark renovator blades are very sharp. Wear gloves and use caution when installing, removing, adjusting, or handling the renovator blades.
- The attachment hydraulic system may contain stored energy. Before performing maintenance or repairs on the hydraulic system, the attachment's auxiliary hydraulic hoses must be disconnected from the power unit. Lower the attachment to the ground, shut off power unit engine, move the secondary SDLA lever left and right to relieve auxiliary hydraulic pressure, and disconnect the auxiliary hydraulic quick couplers.

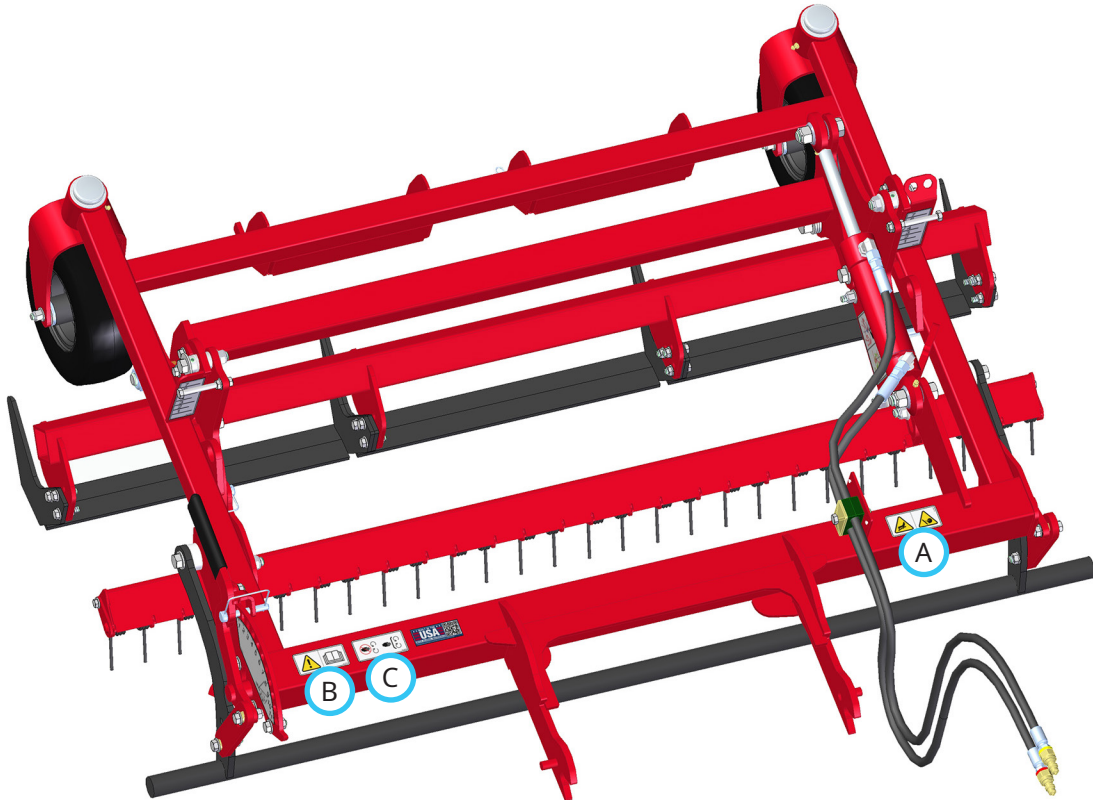
# SAFETY

## Safety Decals

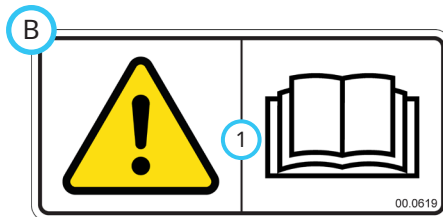
The following safety decals must be maintained on your attachment.

Keep all safety decals legible. Remove all grease, dirt, and debris from safety decals and instructional labels. If any decals are faded, illegible, or missing, contact your dealer promptly for replacements.

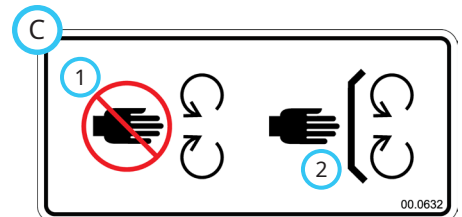
When new components are installed, be sure that current safety decals are affixed to the replacement components.



1. High pressure fluid hazard - keep your body and hands away from suspected hydraulic leaks.
2. Wear eye protection when inspecting the hydraulic system for leaks.



1. Read the operator's manual.

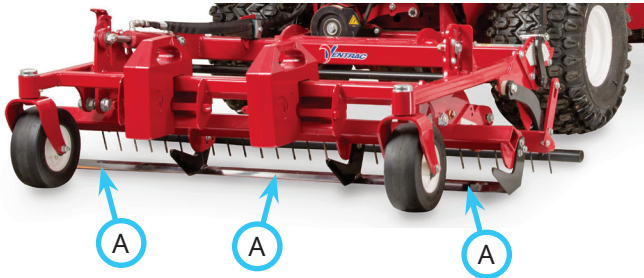


1. Stay away from moving parts.
2. Keep all guards and shields in place.

Decal	Description	Part Number	Quantity
A	High Pressure Fluid Hazard	00.0621	1
B	Read Operator's Manual	00.0619	1
C	Moving Parts Hazard	00.0632	1

# OPERATIONAL CONTROLS

## Renovator Blades



The renovator blades (A) are used to:

- Cut out weeds just below the surface for easy removal with a rake.
- Cut and maintain edge lines around the infield and the warning track.
- Remove high spots and create a level profile under the surface.
- Create a loose surface to provide material for the leveling bars to distribute.
- Remove the grooves left when the scarifier tines or spikes are used on a wet field.

The renovator blade depth is hydraulically controlled using the power unit's secondary SDLA lever\*.

The renovator blades can be mounted in either the upper or lower set of holes. The lower set of holes provides 28.5 mm (1-1/8 inches) of ground clearance (fully raised) and 57 mm (2-1/4 inches) of cutting depth. The upper set of holes provides 44.5 mm (1-3/4 inches) of ground clearance (fully raised) and 41 mm (1-5/8 inches) of cutting depth.

## Scarifier Spring Tines

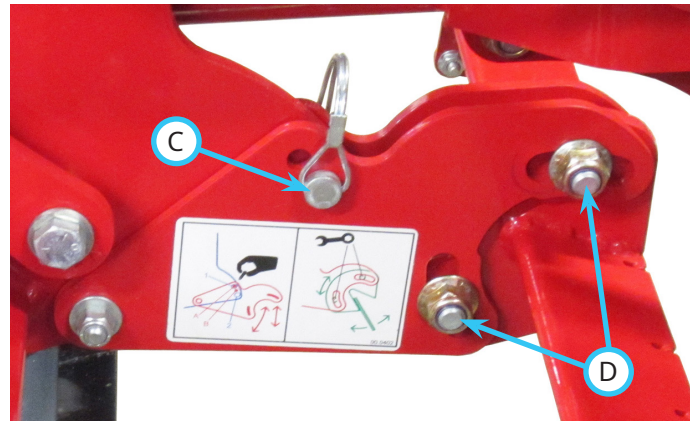


The scarifier spring tines (B) are used to:

- Break up the ground cut by the blades to help provide even material distribution to the leveling bars.
- Loosen and create more material flow to send to the leveling bars.
- Aid in adding surface mix or a drying agent to the field surface.

The scarifier spring tines are tied to the hydraulic adjustment for the renovator blades, but the tines can be adjusted in relation to the renovator blades.

Remove the pins (C) in the left and right scarifier adjustment plates to either rotate the scarifier spring tines to the up position (tines do not contact the soil) or the down position (tines just above the renovator blades to break up material without leaving grooves).



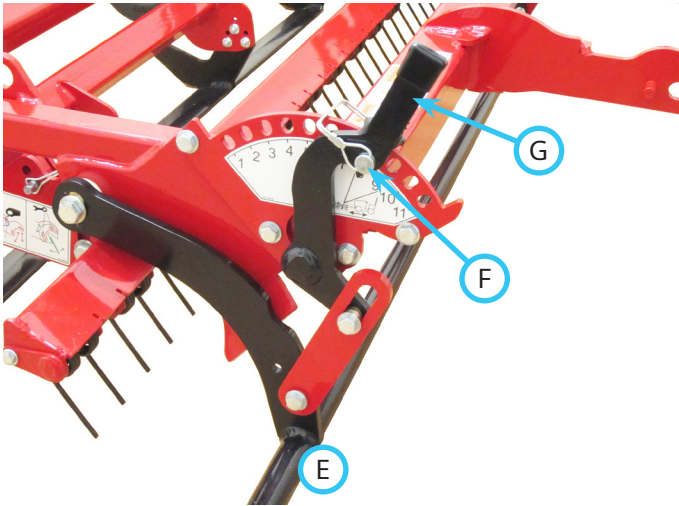
Loosening the bolts (D) that fasten the scarifier tine mount frame to the left and right scarifier adjustment plates allow the tine frame to be rotated to provide either more or less aggressive performance when the spring tines are in the down position.

\*Refer to power unit operator's manual for operation of power unit controls.

## OPERATIONAL CONTROLS

---

### Leveling Bar



The leveling bar (E) is used to carry and distribute material to fill in low areas. The leveling bar can be allowed to float freely or can be set to a fixed height for more aggressive use.

Remove the locking pin (F) from the adjustment lever (G) to allow the leveling bar to float.

To set at a fixed height, move the lever to the desired position and insert the locking pin through the hole in the lever and the slot in the adjustment plate.



# GENERAL OPERATION

## Daily Inspection

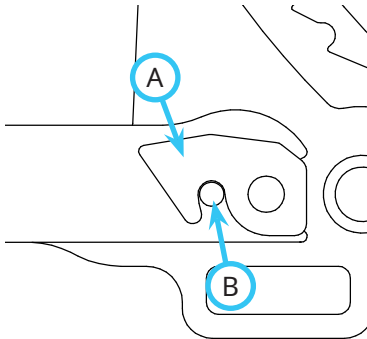
### **⚠ WARNING**

Always engage the parking brake, shut off the power unit engine, remove the ignition key, and ensure that all moving parts have come to a complete stop before inspecting the components, or attempting any repair or adjustment.

1. Park the machine on a level surface, with the engine shut off and all fluids cold.
2. Perform a visual inspection of both the power unit and the attachment. Look for loose or missing hardware, damaged components, or signs of wear.
3. Inspect the hydraulic hoses and the hydraulic fittings to ensure tight, leak free connections.

## Attaching

1. Drive the power unit slowly forward into the hitch arms of the attachment. Align the lift arms of the power unit with the attachment hitch arms by raising or lowering the front hitch and complete the engagement.
2. Once completely engaged, move the front hitch latch lever\* to the locked position. The latch (A) must lock over the attachment's hitch arm pin (B).
3. Engage the parking brake\* and shut off the engine.
4. Wipe the hose ends clean and connect to the power unit's hydraulic quick couplers. If equipped, connect the hoses and the quick couplers so the colored indicators are paired together (red to red, etc.).



## Detaching

1. Park the power unit on a level surface and engage the parking brake.\*
2. Lower the attachment to the ground.
3. Shut off the power unit engine.
4. Lower the leveling bar to position 8 or 9 and secure with the pin.
5. Disconnect the hydraulic quick couplers from the power unit and store the hose ends in the frame holes on the attachment.
6. Disengage the front hitch locking lever.\*
7. Restart the power unit and slowly back away from the attachment. A side to side movement of the steering wheel may aid in disengagement.

## Operating Procedures and Tips

Scan the QR code or visit <http://ventrac.com/QR/groomer> for an operation overview video of the ballpark groomer and renovator.



Before operation, perform the daily inspection and shift the power unit into low range\*.

The renovator should be operated with the power unit's primary SDLA lever\* in the float position.

Disengage the power unit's weight transfer system\* (if equipped) during renovator operation, except when using the renovator blades for edging.

Check for base plugs and/or locating posts, water boxes, etc. under the field surface and mark the positions prior to using the renovator for edging, weed removal, or field leveling.

The following tables contain various field conditions along with general guidelines and tips for renovator and groomer use in each condition. For more detailed information and demonstrations, refer to the ballpark renovator and groomer operational video.

\*Refer to power unit operator's manual for operation of power unit controls.



# GENERAL OPERATION

Procedure / Condition	
Wet Field - Ground is saturated	
DG550 Front Renovator	DR540 Rear Groomer
Engage the scarifier tines if there is enough dry dirt available to incorporate into the wet areas. If the field is saturated, the front renovator should be disengaged.	The roller is engaged with the 3-point hitch in the float position. The spike bar is engaged. The leveling bar is disengaged. Optional brush is disengaged.

Use the spike bar to create more surface area on the field surface to accelerate drying times.

If only low spots contain moisture, the front scarifier tines and the rear spikes will allow the operator to pull out wet material and incorporate dry material from around the wet area.

Allow the field to dry before finishing and preparing for game play.

After the field dries, the surface will likely have a crust and grooves that need to be removed. Set the renovator blades on the front renovator just below the surface to break up the crust and remove the grooves, before preparing the field for use.

To allow the renovator to get closer to the fence when edging or removing weeds from a warning track, remove the pins from the 3-point hitch arm sway bar links, push the rear groomer all the way to one side, and reinstall the pins in the sway bar links. Remove the cut sod and debris after finishing weed removal. Raking away the weeds that have been cut out prior to finishing the field will result in a better finish.

Procedure / Condition	
Heavily Compacted Field - Dry, cracked, & very hard	
DG550 Front Renovator	DR540 Rear Groomer
Scarifier tines are engaged if there are large brittle chunks that need to be broken up.	The roller is engaged with the 3-point hitch in the float position. The spike bar is engaged. The leveling bar is disengaged. Optional brush is disengaged.

If necessary, add weights to the groomer to penetrate compacted ground.

Procedure / Condition	
Weed Management / Edge Line Shaping	
DG550 Front Renovator	DR540 Rear Groomer
Engage the renovator blades. Set the blade depth below the roots for edging and at the middle of the root for weed removal. The leveling bar is disengaged. The scarifier tines are disengaged.	Fully raised.

If necessary, add weights to the renovator to penetrate compacted ground.

Cutting large amounts of sod will tend to pull the unit to the side, making it difficult to maintain a straight line. It is better to make multiple passes, removing smaller portions at a time.

Add weights to the front renovator and engage the power unit's weight transfer (set to position # 2 or apply approximately half the weight transfer) to help maintain a straight line or follow the curve of the outfield grass.

# GENERAL OPERATION

Procedure / Condition	
Uneven Field / Low Spots	
DG550 Front Renovator	DR540 Rear Groomer
<p>The renovator blades are engaged and set approximately 6.5 mm (1/4 inch) deep.</p> <p>The scarifier tines are placed just above the renovator blades to break up material.</p> <p>The leveling bar is engaged and adjusted according to the field conditions.</p>	<p>The roller is engaged with the 3-point hitch in the float position.</p> <p>The spike bar is disengaged.</p> <p>The leveling bar is engaged and adjusted according to the field conditions.</p> <p>Optional brush is disengaged.</p>

Leveling is best accomplished in neutral conditions. If the field is wet, material will not elevate enough for the process to work. If the field is too dry, material will elevate, but will not settle enough to be effective. Working with a field that is neither saturated or dusty will yield the best results.

Add weights to the rear groomer as necessary to control packing and minimize surface ripples.

Level in straight lines making the longest passes possible. Do not make sharp turns with either the front renovator or the rear groomer engaged with the ground.

Use a slow, steady speed when moving large amounts of material.

When targeting a low spot, work the ground around and through it in all directions. Moving ground in all directions and constantly packing it on all sides will provide a longer lasting result than working from one direction only.

Field leveling is a process that will not be completed the first time. The field condition will gradually improve as the leveling process is repeated. If the field is allowed to sit without attention for prolonged periods, the field condition will regress back to much of its previous condition.

Procedure / Condition	
Finish Grooming	
DG550 Front Renovator	DR540 Rear Groomer
Fully raised.	<p>The roller is engaged with the 3-point hitch in the float position.</p> <p>The spike bar is disengaged.</p> <p>The leveling bar is disengaged.</p> <p>The optional brush is engaged if you are not using a drag mat.</p> <p>Drag is engaged. Use the steel drag in moderate moisture conditions and the coco mat drag for dry conditions.</p>

Finish grooming can be done in either high or low range. Do not operate at high speeds when turning in tight circles to prevent unintentional compaction and tire ruts.

Operating in circles with the drag mat will create a nice infield finish, while distributing material evenly. Change the way you finish the field so that you are not always working material the same direction (i.e. if you start at the pitcher's mound and work toward the outside every time, you will work more and more material to the edge and will require leveling more frequently).

## Transport of the Attachment

Transport the attachment with the power unit front hitch and attachment fully raised to reduce wear of the equipment. Travel slowly when transporting over undulating and rough surfaces to maintain control of the power unit and to reduce the shock to the power unit and the attachment.

# SERVICE

## ⚠ WARNING

Always engage the parking brake, shut off the power unit engine, remove the ignition key, and ensure that all moving parts have come to a complete stop before inspecting the components, or attempting any repair or adjustment.

## ATTENTION

If any component requires replacement, use only original Ventrac replacement parts.

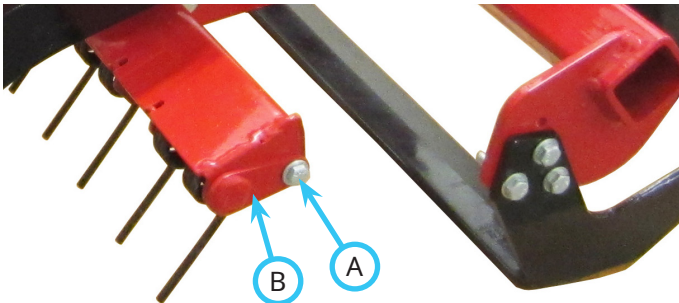
### Cleaning and General Maintenance

For best results, and to maintain the finish of the ballpark renovator, clean or wash the ballpark renovator to remove dust, dirt, and debris. Apply a thin layer of environmentally friendly vegetable or corn oil to the renovator blades to prevent rusting.

### Scarifier Tine Replacement

If a scarifier spring tine requires replacement:

1. Determine whether the spring tine is secured with the left or the right scarifier tine retainer shaft.
2. Remove the nut and bolt (A) securing the retainer shaft (B) to the scarifier tine mount.



3. Slide the shaft out until you reach the scarifier spring tine that needs to be replaced.
4. Remove the old scarifier spring tine and position the new tine in place, matching the orientation of the other scarifier spring tines.
5. Slide the scarifier tine retainer shaft back into the scarifier tine mount, reinstalling the scarifier spring tines as you go.
6. Reinstall the nut and bolt to secure the scarifier tine retainer shaft to the scarifier tine mount and torque to 11 Nm (100 in-lbs).

### Renovator Blade Replacement

## ⚠ CAUTION

The renovator blades are sharp. Wear gloves when working on or near the renovator blades.

If the cutting edge of a renovator blade becomes dull or damaged, it will need to be replaced.

1. Park the renovator and power unit on a level surface and lower the renovator to the ground.
2. Hydraulically raise the renovator blades to their highest position.
3. Engage the parking brake, shut off the power unit engine, and remove the ignition key.
4. Remove the three bolts that fasten each flange of the renovator blade to the blade mount frame.
5. Remove the old renovator blade and position the new renovator blade in place.
6. Reinstall the three bolts through each flange of the renovator blade, the flange of the adjacent renovator blade(s), and the blade mount frame. Secure with the flange nuts and torque to 24 Nm (210 in-lbs).

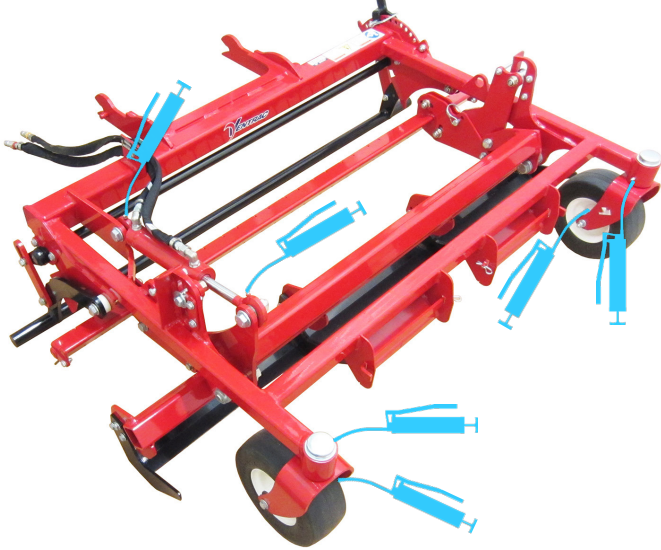
# SERVICE

## Lubrication Locations

Lubrication is required at the following locations using a lithium complex NLGI #2 grease.

Wipe the grease fittings clean before applying grease to the grease fittings.

Refer to the maintenance schedule for service intervals and the amount of grease.



## Storage

### Preparing the Attachment for Storage

1. Clean the attachment to remove accumulated dust, dirt, and debris.
2. Inspect for loose or missing hardware, damaged components, or signs of wear. Repair or replace any damaged or worn components.
3. Inspect the hydraulic hoses and fittings to ensure tight, leak free connections. Repair or replace any damaged or worn components.
4. Inspect the safety decals. Replace any decals that are faded, illegible, or missing.
5. Apply grease to all grease points and wipe off any excess grease.
6. Apply a thin layer of environmentally friendly vegetable or corn oil to the renovator blades to prevent rusting.
7. Inspect the painted components for chips, scratches, or rust. Clean and touch up the surfaces as needed.

### Removing the Attachment from Storage

1. Clean the attachment to remove any accumulated dust or debris.
2. Inspect the attachment as instructed in the Daily Inspection section of this manual.
3. Test the attachment to ensure that all the components are working properly.

# SERVICE

## Maintenance Schedule

	# of locations	# of pumps	As Needed	Daily	At 50 hours	At 100 hours	At 150 hours	At 200 hours	At 250 hours	At 300 hours	At 350 hours	At 400 hours	At 450 hours	At 500 hours	At 550 hours	At 600 hours	At 650 hours	At 700 hours	At 750 hours	At 800 hours	At 850 hours	At 900 hours	At 950 hours	At 1,000 hours	Yearly
Grease and Lubrication: See Lubrication Section																									
Caster Wheel Pivot	2	1			✓	✓	✓	✓	✓	✓	✓	✓	✓	✓	✓	✓	✓	✓	✓	✓	✓	✓	✓	✓	✓
Wheel Axle Bearing	2	^			✓	✓	✓	✓	✓	✓	✓	✓	✓	✓	✓	✓	✓	✓	✓	✓	✓	✓	✓	✓	✓
Cylinder Ends	2	^			✓	✓	✓	✓	✓	✓	✓	✓	✓	✓	✓	✓	✓	✓	✓	✓	✓	✓	✓	✓	✓
Inspection																									
Inspect for Loose, Missing, or Worn Components				✓																					
Inspect for Bent or Broken Scarifier Spring Tines				✓																					
Inspect the Safety Decals				✓																					
^Grease until fresh grease is visible.																									

## Maintenance Checklist

	# of locations	# of pumps	As Needed	Daily	At 50 hours	At 100 hours	At 150 hours	At 200 hours	At 250 hours	At 300 hours	At 350 hours	At 400 hours	At 450 hours	At 500 hours	At 550 hours	At 600 hours	At 650 hours	At 700 hours	At 750 hours	At 800 hours	At 850 hours	At 900 hours	At 950 hours	At 1,000 hours	Yearly
Grease and Lubrication: See Lubrication Section																									
Caster Wheel Pivot	2	1																							
Wheel Axle Bearing	2	^																							
Cylinder Ends	2	^																							
Inspection																									
Inspect for Loose, Missing, or Worn Components																									
Inspect for Bent or Broken Scarifier Spring Tines																									
Inspect the Safety Decals																									
^Grease until fresh grease is visible.																									

# SPECIFICATIONS

---

## Dimensions

Overall Height . . . . .	48 cm (19 inches)
Overall Length . . . . .	117 cm (46 inches)
Overall Width . . . . .	142 cm (56 inches)
Weight . . . . .	116 kg (255 pounds)
Cutting Depth (Maximum). . . . .	57 mm (2-1/4 inches)

## Features

- Three renovator blades for weed removal, cutting and maintaining edge lines, and leveling.
- Twenty-eight scarifier tines for breaking up ground cut by the renovator blades and for adding surface mix or drying agent.
- A leveling bar to carry and distribute material to fill in low areas.
- Hydraulic adjustment of the renovator blade cutting depth.
- Flat free tires.
- Ability to add up to six Ventrac weights to help penetrate compacted surfaces.