



# OWNER/OPERATOR'S MANUAL & PARTS LIST

## SNOW BLOWER

KX522



Revised 10/22/08

09.10047



Orrville, OH

www.ventrac.com

**TO THE OWNER**

**Product Identification**

If you need to contact an Authorized Ventrac Dealer for information on servicing your product, always provide the Product Model and Serial numbers.

Please fill in the following information for future reference. See picture below to find the location of the identification number. Record them in the spaces provided below.

Date of Purchase: Month \_\_\_\_\_ Day \_\_\_\_\_ Year \_\_\_\_\_

Dealer: \_\_\_\_\_

Dealer Address: \_\_\_\_\_  
\_\_\_\_\_

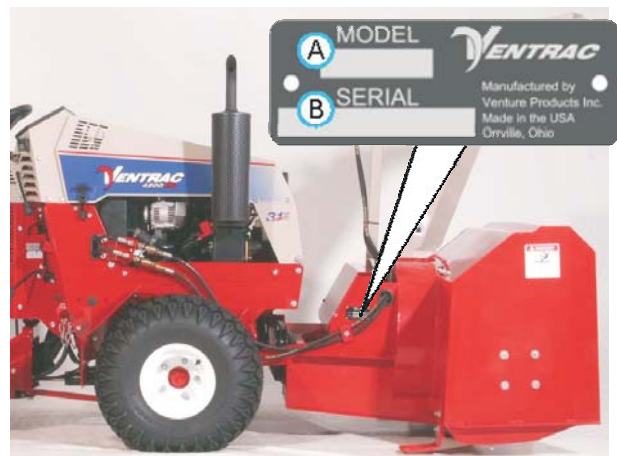
Dealer Phone Number: \_\_\_\_\_

Dealer FAX Number: \_\_\_\_\_

Model # (A): \_\_\_\_\_

Serial # (B): \_\_\_\_\_

Affix Part/Serial Number label here



Venture Products Inc. reserves the right to make changes in design or specifications without obligation to make like changes on previously manufactured products.

# TABLE OF CONTENTS

---

<b>INTRODUCTION</b>	<b>SECTION A</b>
Description & Specifications . . . . .	A-1
<b>SAFETY</b>	<b>SECTION B</b>
Safety Symbols . . . . .	B-1
Decals . . . . .	B-2
General Safety Procedures . . . . .	B-3
Safety Operation & Techniques . . . . .	B-4
<b>OPERATION</b>	<b>SECTION C</b>
Attaching . . . . .	C-1
Detaching . . . . .	C-1
Operating Techniques & Tips . . . . .	C-1
<b>MAINTENANCE/ADJUSTMENTS</b>	<b>SECTION D</b>
Bearing Lubrication . . . . .	D-1
Gearbox Lubrication . . . . .	D-1
Belt Replacement . . . . .	D-1
Chute Adjustment . . . . .	D-2
Skid Shoe Adjustment . . . . .	D-2
Auger Housing Wear Edge Adjustment . . . . .	D-2
<b>PARTS &amp; ILLUSTRATED DRAWINGS</b>	<b>SECTION E</b>
Main Frame & Auger Drive . . . . .	E-1 & 2
Main Drive & Fan Drive . . . . .	E-3 & 4
Chute & Hydraulics . . . . .	E-5 & 6
Shields, Decals, & Cutting Edge . . . . .	E-7 & 8
<b>PARTS/OPTIONS</b>	<b>SECTION F</b>
12 Volt Actuator Deflector Control . . . . .	F-1 & 2
Top Auger . . . . .	F-3 & 4
<b>WARRANTY</b>	

# INTRODUCTION

---

## Product Description KX522 Snow Blower

The Ventrac Model KX522 Snow Blower is a powerful, high capacity, two-stage snow blower. It combines an aggressive sixteen inch auger with a heavy duty, high speed fan to make a powerful and efficient snow removing attachment for the Ventrac 4000 series tractors.

The KX522 Snow Blower features:

a hydraulic motor that rotates the discharge chute 220 degrees.

a reversible, hardened cutting edge.

a shock absorbing belt drive to protect the gearbox.

quick attach mounting to the tractor.

adjustable skid shoes

adjustable auger housing side wear edges.

For areas with heavy snowfall, an optional second auger (Kit # 70.8072) is available. This second auger mounts above the 16" auger for effective removal of deeper snow.

An optional 12 volt actuator (Kit # 70.8025) can be added to control the chute deflector angle from the tractor seat. The 12 volt actuator is designed for use along with one of the following switch and plug kits, based on your tractor model.

If you have a Model 4100 or 4200 tractor, a **KT** 12v Switch & Plug Kit (# 70.4039) is required.

If you have a Model 4000 tractor, an **HT** 12v Switch & Plug Kit (# 70.4046) is required.

## Ventrac KX522 Specifications

Overall Height . . . . .	58-1/2 inches
Overall Length . . . . .	43-3/4 inches
Overall Width . . . . .	52 inches
Weight . . . . .	440 pounds
Auger Opening Width . . . . .	48 inches
Auger Diameter . . . . .	16 inches
Fan Diameter . . . . .	19-1/2 inches

Venture Products, Inc. reserves the right to change these specifications without notice.

# SAFETY

---



## ATTENTION:

This symbol identifies potential health and safety hazards. It marks safety precautions. Your safety and the safety of others is involved.

## SIGNAL WORD DEFINITIONS

### **DANGER**

Indicates an imminently hazardous situation which, if not avoided, will result in death or serious injury. This signal word is limited to the most extreme cases.

### **WARNING**

Indicates a potentially hazardous situation which, if not avoided, could result in death or serious injury.

### **CAUTION**

Indicates a potentially hazardous situation which, if not avoided, may result in minor or moderate injury and/or property damage. It may also be used to alert against unsafe practices.

# SAFETY

The following decals must be maintained on your Ventrac Attachment. If any decals are faded or missing, contact your dealer promptly for replacements.



A



B



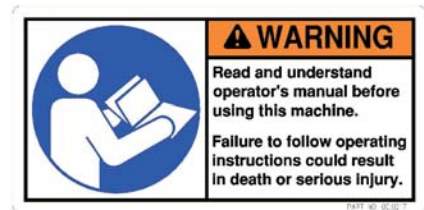
C



D



E



F



G

Decal	Page & Location	Description	Part Number
A	E-7, #5 F-3, #29	Danger - Shield Missing	00.0062
B	E-7, #18	Hazard - Moving Part	00.0101
C	E-7, #17	Thrown Object Hazard	00.0122
D	E-5, #34 (2)	Keep Hands & Feet Away	00.0123
E	E-7, #23 (2) F-3, #27	Danger - Auger Hazard	00.0208
F	E-7,	Warning - Read Owner's Manual	00.0217
G	E-7,	General Safety	00.0220

# SAFETY

---



## General Safety Procedures for Ventrac Tractors, Attachments, & Accessories



Read and understand the operator's manual before operating this equipment.

Observe and follow all safety decals.

DO NOT let children or any untrained person operate the tractor or attachment. Make sure that all operators of this equipment are thoroughly trained in using it safely.

Never allow additional riders on the tractor or attachments.

DO NOT operate tractor or attachments if you are under the influence of alcohol, drugs, or medication that may impair judgment or cause drowsiness, or if you are not feeling well.

Operate all controls from the operator's seat only.

Before operating equipment, make sure all shields are in place and fastened.

Ensure the attachment or accessory is locked or fastened securely to the tractor before operating. See tractor manual for locking procedure.

Ensure that all bystanders are clear of the tractor and attachment before operating. Be especially careful and observant if other people are present. Never assume that bystanders will remain where you last saw them.

Always look in the direction the tractor is moving.

Never direct the discharge of any attachment in the direction of people, animals, buildings, vehicles, or objects of value.

Stop operation immediately at any sign of equipment failure and correct the problem before continuing to operate. An unusual noise can be a warning of equipment failure or a sign that maintenance is required.

Before adjusting, cleaning, lubricating, or changing parts on the tractor or attachment, engage the parking brake, lower the attachment to the ground, stop the engine, and remove the ignition key.

To prevent the risk of uncontrolled equipment movement on tractors equipped with 2 speed axles, always shift the transaxle range with the tractor stationary on level ground and with the parking brake engaged.

If equipment is to be left unattended, engage the parking brake, lower the attachment to the ground, stop the engine, and remove the ignition key.

# SAFETY

---

## KX522 Safety Procedures

### **WARNING**

Before making any repairs or adjustments, engage the parking brake, lower attachment to the ground, shut the engine off, and remove the key.

### **WARNING**

Read and understand the operator's manual before operating this equipment.

The design and power used to move snow must be effective to break up snow and to blow it for relocation. This could make the snow blower a lethal "weapon" when misused. Operators should be extremely careful never to direct the snow blower or its discharge chute toward people or anything of value. Even snow discharged from the machine can be solid enough to cause serious injury. Frozen snow, ice, gravel, and other objects can be thrown at deadly speeds.

Operators should know the area being cleared and make preparations ahead of time. Place guide stakes appropriately, remove stones or markers of any kind that may be covered after a snowfall. Curbs, offsets, steps, manholes, broken pavement, etc. should be noted. Operators are encouraged to map the area(s) to be cleared before the winter season to remind the operator of potential hazards. If an area is to be cleared that is unfamiliar to the operator, travel slowly and use **EXTREME CAUTION**. Inquire of anyone who might know of potential hazards.

The operator should never proceed if visibility is poor. If the tractor is equipped with a cab, the windshield must be kept clean. Wait for blinding snowstorms and squalls to subside, and discharge snow with the wind direction as much as possible. Discharging snow against the wind reduces the blowing distance and generally reduces visibility by creating a snowstorm effect.

Use extra care when you come to shrubs, trees, or other objects that may block your vision.

Shut off the PTO when you are not blowing snow.

Always stop the snow blower and engage the parking brake before dismounting to change the angle of the chute deflector. Never attempt to clean out the snow blower, or adjust, repair, or maintain any part with the tractor running.

Always choose caution and safety over speed. Snow removal can be very important, even urgent, but one careless move can be far more serious.



# OPERATION

---

## Attaching

1. Drive the tractor slowly forward into the hitch arms on the snow blower. Align the lift arms of the tractor with the snow blower hitch arms by raising or lowering the front hitch and complete the engagement.
2. Once completely engaged, close the front hitch locking lever.\*
3. Engage the parking brake\* and shut off engine.
4. Place the attachment belt over the outside groove of the PTO drive pulley on the tractor. Ensure the belt is properly seated in each pulley.
5. Engage the PTO spring tension lever.\*
6. Wipe the quick couplers clean, and connect to the tractor. If equipped, connect the hoses and quick couplers so the red indicators are paired together and the yellow indicators are paired together.
7. Connect the electric plug. (If equipped)
8. Engage the weight transfer system\*. (If equipped)

## Detaching

1. Park the tractor on a level surface and set the parking brake.\*
2. Lower the snow blower to the ground.
3. Shut off tractor engine.
4. Disengage the PTO spring tension lever.\*
5. Remove the attachment belt from the PTO drive pulley of the tractor.
6. Disconnect the hydraulic quick couplers from the tractor. Do not allow hoses and couplers to lay in the dirt and snow.
7. Disconnect the electric plug. (If equipped)
8. Disengage the hitch locking lever.\*
9. Restart tractor and slowly back away from the snow blower.

\* Refer to tractor manual for operation of controls.

## Operating Techniques & Tips

Always shift the tractor transaxle to low range when operating the snow blower.

Always direct the discharge chute toward open areas. Whenever possible, blow snow with the wind direction and not against it. Rotate the chute to the desired direction using the auxiliary control. Adjust the discharge deflector to the desired angle. Refer to chute adjustment on page D-2.

Lower the snow blower to the ground and place the S.D.L.A. lever in the float position by moving it outward to the second position until the detent engages. The lever will stay in this position after engagement. For proper skid shoe height adjustment, refer to page D-2.

With the tractor running at approximately 2000-2500 RPM, engage the PTO. Drive forward slowly, keeping a close watch for potential hazards. Adjust the discharge chute rotation as necessary to keep the discharged snow directed to open areas.

# MAINTENANCE/ADJUSTMENTS

## Lubrication

Grease the auger, jack-shaft, & blower shaft bearings every 25 hours. Do not over grease. Usually, one or two pumps is sufficient. Additional lubrication may be required in extremely harsh or dirty conditions.

Check the gearbox every 100 hours or seasonally. If necessary, add 80-90 weight gear oil. Gearbox should be approximately half full.

## Belt Replacement

	Venture Part #
PTO belt from the 4000 series tractor to the snow blower	B50 81.B050
Auger drive belt (2)	B50 81.B050
Gearbox drive belt	B35 81.B035
Fan drive belt	B55 81.B055
Optional top auger drive belt	B40 81.B040

## Fan Drive Belt Replacement

1. Remove the main drive cover from the snow blower.
2. Release the belt tension springs for the gearbox drive and the fan drive belts.
3. Remove the four bolts (See Figure 1) from the bracket that holds the rear blower shaft bearing.
4. Rotate the bracket as shown in Figure 2.



Figure 1



Figure 2

5. Remove the gearbox drive belt. Remove the old fan drive belt and install a new belt. Reinstall the gearbox drive belt.
6. Rotate the bracket back into place and install the four bolts.
7. Apply the belt tension springs for the gearbox drive and fan drive belts.
8. Reinstall the main drive cover.

# MAINTENANCE/ADJUSTMENTS

---

## Gearbox Drive, Auger Drive, & Top Auger Drive Belt Replacement

1. Remove the belt drive cover.
2. Release the belt tension spring and remove the old belt(s).
3. Install the new belt(s) and apply the belt tension spring.
4. Reinstall the belt drive cover.

## Spring Tension Adjustment

The spring tension is adjustable for all the belts. This is to allow some belt slippage to protect the gearbox and drive components in the event an immovable object stops the auger or fan. At the factory, the spring is installed with a limited amount of tension. If required, the spring tension can be increased.

## Chute Adjustment

The discharge deflector can be hand adjusted to several different settings. Release the chute adjustment link by pulling to the side and move the deflector to the desired angle. Re-engage the link. With an optional electric actuator installed, the discharge deflector can be adjusted with a switch on the dash of the tractor.

## Skid Shoe Adjustment

Skid shoes are provided to keep the cutting edge off the surface to be cleaned, especially when clearing snow on gravel drives and roadways. To adjust the skid shoes, park the tractor and snow blower on a level surface. Raise the blower and set blocks of the desired height under the cutting edge. (See Figure 3) Lower the snow blower until it is resting on the blocks. Loosen the skid shoe mounting bolts and slide the skid shoes until they touch the ground. Re-tighten the mounting bolts. Both the right and the left skid shoes should be set at the same height.



Figure 3

## Auger Housing Wear Edge Adjustment

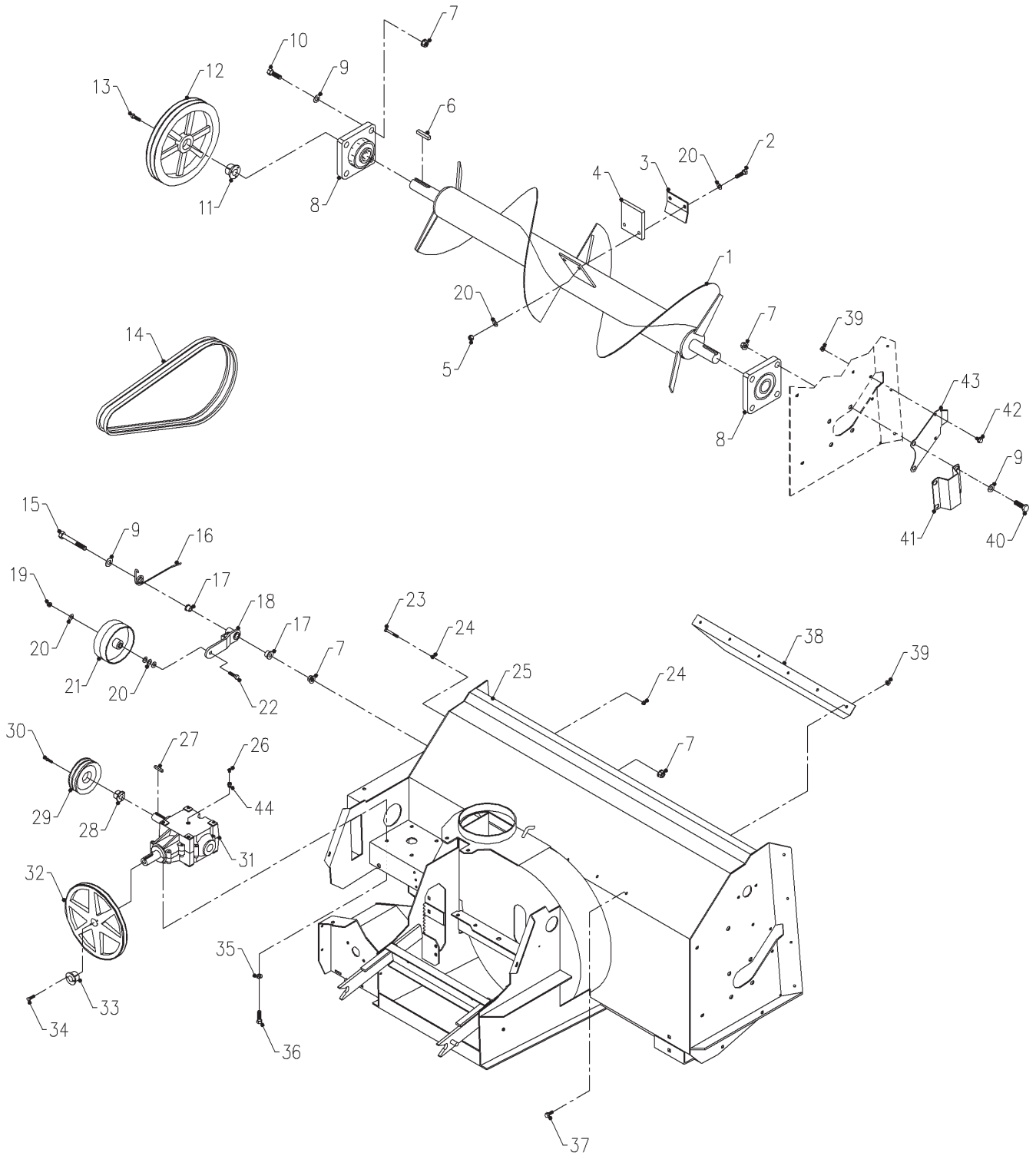
After the skid shoes are adjusted to the correct height, park the tractor and snow blower on a level surface. Lower the snow blower until the skid shoes are resting on the ground. Set the auger housing wear edges approximately 1/4" above the ground.

## Vertical Cutting Edge Adjustment

The vertical cutting edges can be adjusted to provide either a 52" or 54" cutting width. If the shorter flanges (2-7/8 - 3") are bolted to the snow blower, the cutting width is 52". If the longer flanges are bolted to the snow blower, the cutting width is 54". To switch from one cutting width to the other, rotate the cutting edges 180 degrees. Do not switch the cutting edges to opposite sides of the snow blower. The left cutting edge has 15 degrees greater bend than the right.

# PARTS

## ILLUSTRATED DRAWING MAIN FRAME & AUGER DRIVE



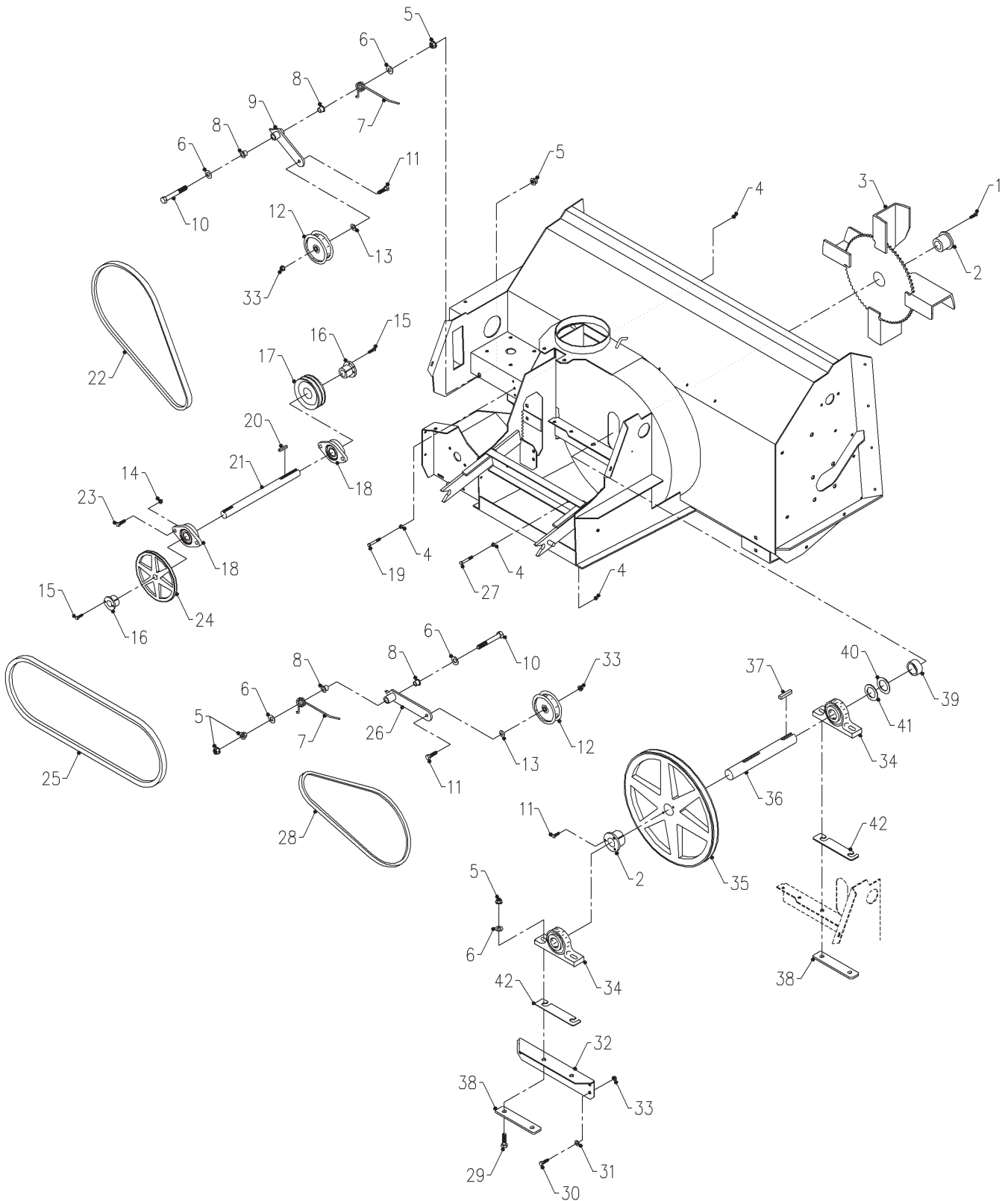
# PARTS

## MAIN FRAME & AUGER DRIVE

REF.	PART NO.	DESCRIPTION	QTY.
1	80.0369	AUGER, ASM KX522.	1
2	90.0612	BOLT, 3/8-16 USS X 1 1/2	4
3	64.1088	PLATE, AUGER PADDLE RETAINER	2
4	44.0181	PADDLE, 1/2" 3 PLY 3/8 X 1/16	2
5	99.A06N	LOCKNUT, NYLON 3/8-16	4
6	85.K0610	KEY, 3/8 X 1 1/4	1
7	99.SF08	NUT, SF 1/2-13 USS	10
8	55.FB22023	BEARING, FLANGE BLOCK 1-7/16"	2
9	95.08	WASHER, FLAT 1/2 SAE	9
10	90.0812	BOLT, 1/2-13 USS X 1 1/2	4
11	83.SK23	BUSHING, 1 7/16" SK	1
12	83.2B110SK	PULLEY, 2 B 11" 2-GROOVE	1
13	90.0516	BOLT, 5/16-18 USS X 2	3
14	81.B050	BELT, B50	2
15	90.0824	BOLT, 1/2-13 USS X 3	1
16	41.0066	SPRING, SINGLE TORSION LH	1
17	85.B0027	BUSHING, 1/2 ID X 5/8 OD X 5/8	2
18	40.0314	IDLER ARM, AUGER DRIVE	1
19	99.SF06	NUT, SF 3/8-16 USS	1
20	95.06	WASHER, FLAT 3/8 SAE	12
21	83.0040	PULLEY, IDLER FLAT 5" PLAIN	1
22	90.0616	BOLT, 3/8-16 USS X 2	1
23	90.0418	BOLT, 1/4-20 USS X 2 1/4	3
24	99.SF04	NUT, SF 1/4-20 USS	6
25	62.1274	FRAME, MAIN KX522	1
26	29.0093	PIPE, BREATHER PLUG 1/4	1
27	85.K0408	KEY, 1/4 X 1	2
28	83.SH16	BUSHING, 1" SH.	1
29	83.2B36SH	PULLEY, 2 B 3.6" 2-GROOVE	1
30	90.0416	BOLT, 1/4-20 USS X 2	3
31	87.0219	GEARBOX, CW/CCW 1" SHAFT 2:1	1
32	83.BK80H	PULLEY, 8" H-BUSH	1
33	83.H16S	BUSHING, 1" SPLIT 1/4" KEY	1
34	90.0406	BOLT, 1/4-20 USS X 3/4	2
35	96.06	WASHER, LOCK 3/8	4
36	90.0608	BOLT, 3/8-16 USS X 1	4
37	99.SF0506	BOLT, SF 5/16-18 USS X 3/4	6
38	60.0873	GUIDE, THROAT	1
39	99.SF05	NUT, SF 5/16-18 USS	8
40	90.0814	BOLT, 1/2-13 USS X 1 3/4	4
41	60.0982	SHIELD, STUB SHAFT	1
42	99.SF0504	BOLT, SF 5/16-18USS X 1/2	2
43	64.1283	BRACKET, AUGER INSTALL ACCESS	1
44	29.B0204G	PIPE, BUSHING 1/8 X 1/4 GALV.	1

# PARTS

## ILLUSTRATED DRAWING MAIN DRIVE & FAN DRIVE



# PARTS

## MAIN DRIVE & FAN DRIVE

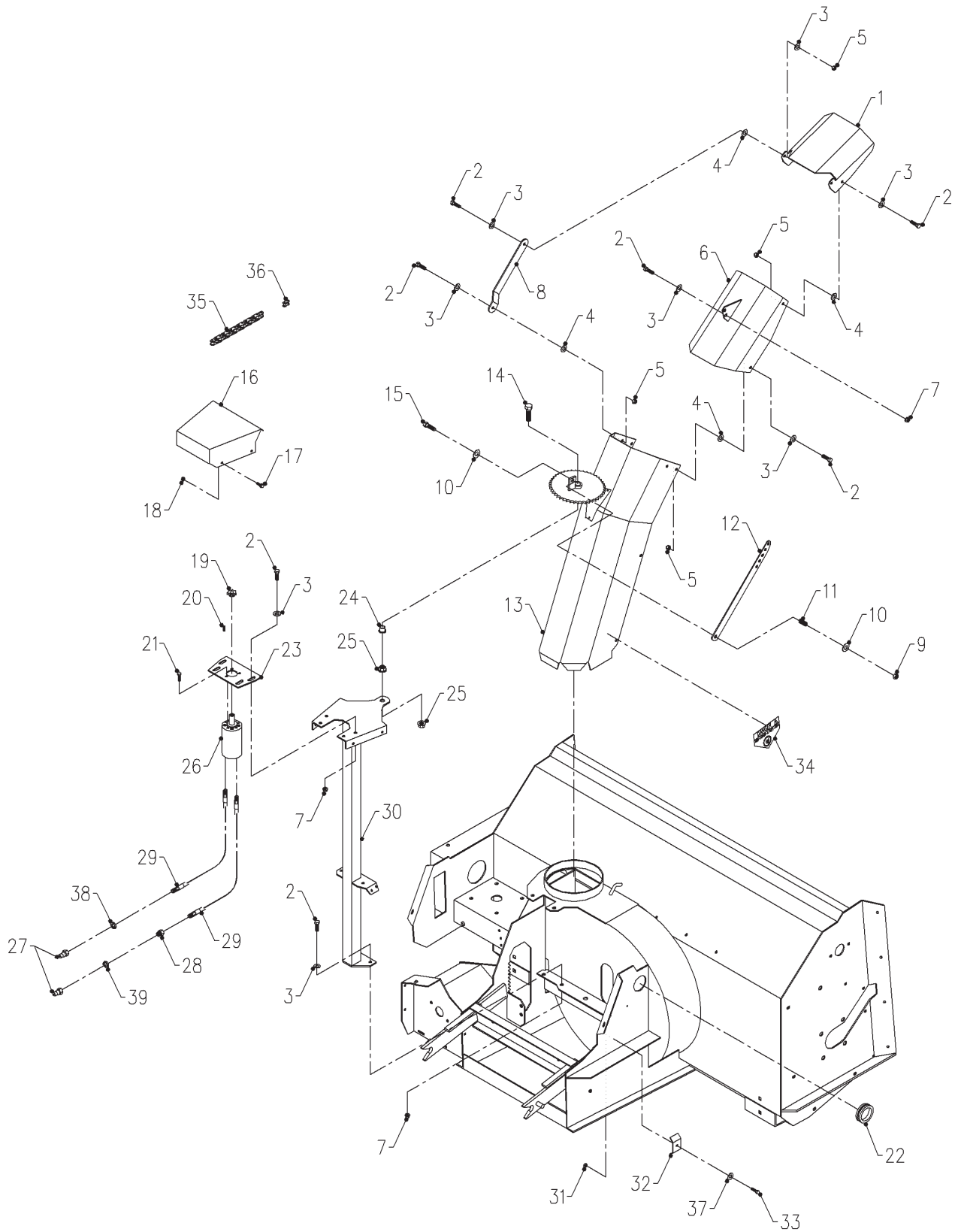
REF.	PART NO.	DESCRIPTION	QTY.
1	90.0610	BOLT, 3/8-16 USS X 1 1/4	3
2	83.Q123	BUSHING, 1 7/16" Q1	2
3	80.0344	BLOWER, SNOWBLOWER	1
4	99.SF04	NUT, SF 1/4-20 USS	8
5	99.SF08	NUT, SF 1/2-13 USS	8
6	95.08	WASHER, FLAT 1/2 SAE	8
7	41.0066	SPRING, SINGLE TORSION LH	2
8	85.B0027	BUSHING, 1/2 ID X 5/8 OD X 5/8	4
9	40.0312	IDLER ARM, GEAR BOX KX	1
10	90.0824	BOLT, 1/2-13 USS X 3	2
11	90.0612	BOLT, 3/8-16 USS X 1 1/2	5
12	83.0037	PULLEY, IDLER FLAT 4" X 3/8	2
13	95.06	WASHER, FLAT 3/8 SAE	2
14	99.SF05	NUT, SF 5/16-18 USS	4
15	90.0406	BOLT, 1/4-20 USS X 3/4	4
16	83.H16S	BUSHING, 1" SPLIT 1/4" KEY	2
17	83.2BK32H	PULLEY, 2BK 3.2" H-BUSH	1
18	55.FB16016-1	BEARING, FLANGE BLOCK 1"	2
19	90.0410	BOLT, 1/4-20 USS X 1 1/4	3
20	85.K0408	KEY, 1/4 X 1	2
21	80.0345	JACKSHAFT, 1" TGP X 13-1/4 KX	1
22	81.B035	BELT, B35	1
23	99.SF0508	BOLT, SF 5/16-18 USS X 1	4
24	83.BK75H	PULLEY, 7.5"	1
25	81.B050	BELT, B50	1
26	40.0313	IDLER ARM, FAN DRIVE KX	1
27	90.0414	BOLT, 1/4-20 USS X 1 3/4	1
28	81.B055	BELT, B55	1
29	90.0816	BOLT, 1/2-13 USS X 2	4
30	90.0606	BOLT, 3/8-16 USS X 3/4	4
31	95.06	WASHER, FLAT 3/8 SAE	4
32	64.1085	SUPPORT, BLOWER BEARING KX	1
33	99.SF06	NUT, SF 3/8-16 USS	6
34	55.PB22023	BEARING, PILLOW BLOCK 1 7/16	2
35	83.TB124	PULLEY	1
36	80.0346	SHAFT, THROWER FAN	1
37	85.K0610	KEY, 3/8 X 1 1/4	2
38	64.1099	PLATE, BEARING REINFORCEMENT	2
39	64.1100	BUSHING, 1-1/2 X 2 X 7/8	1
40	99.B0031	WASHER, MACH 1 1/2 14GA	A/R*
41	99.B0054	WASHER, MACH 1 1/2 10GA	A/R*
42	64.1249	SHIM, BEARING KX/LX	A/R*

\* as required.



# PARTS

## ILLUSTRATED DRAWING CHUTE & HYDRAULICS





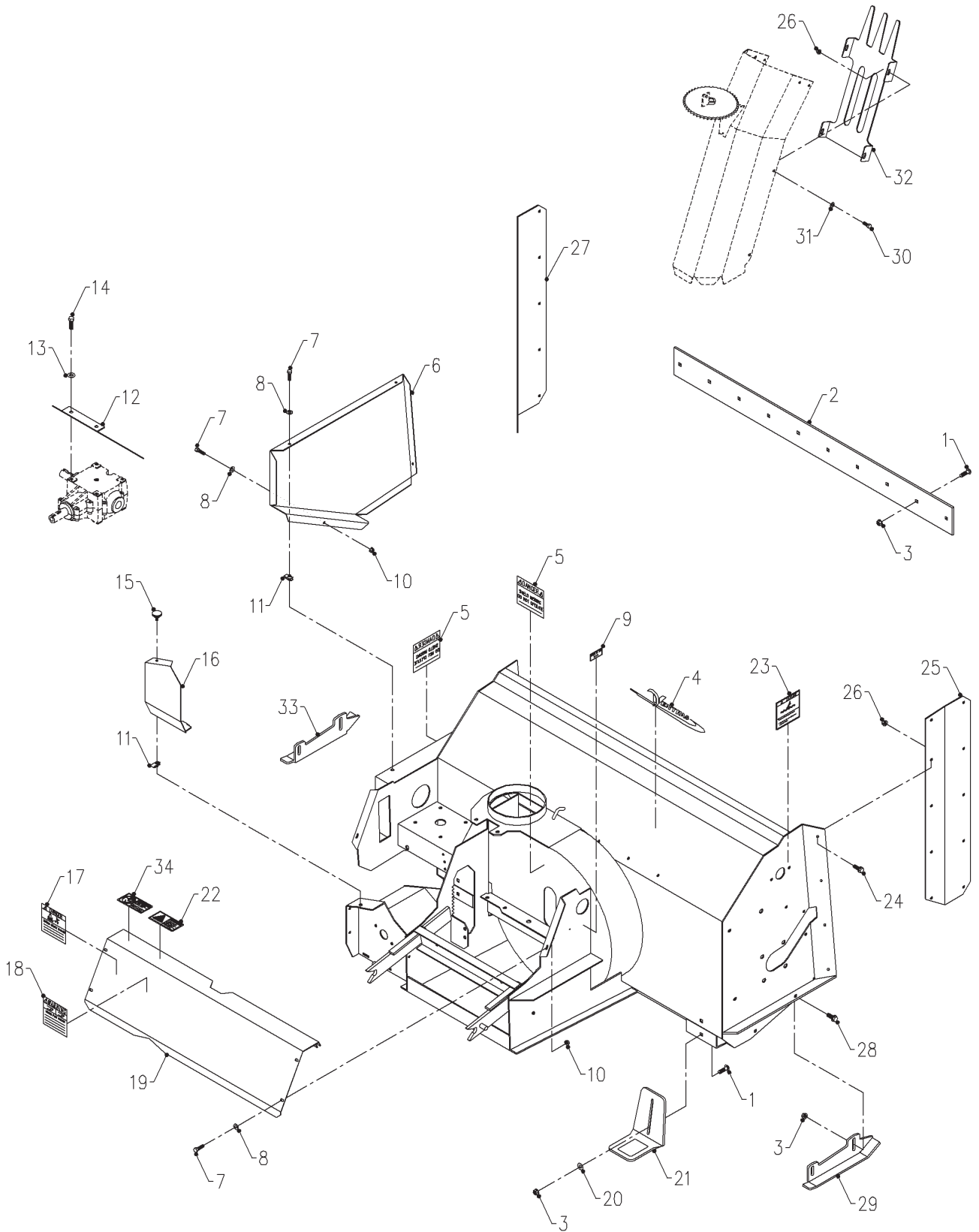
# PARTS

## CHUTE & HYDRAULICS

REF.	PART NO.	DESCRIPTION	QTY.
1	62.0992	CHUTE, FINAL EXT. SNOWBLOWER	1
2	90.0506	BOLT, 5/16-18 USS X 3/4	17
3	95.05	WASHER, FLAT 5/16 SAE	17
4	05.0055	WASHER, NYLON .34 X .74 X .062	8
5	99.A05	LOCKNUT, STOVER 5/16-18 USS	8
6	62.0991	CHUTE, MIDDLE SNOWBLOWER	1
7	99.SF05	NUT, SF 5/16-18 USS	9
8	42.0461	LINK, CHUTE CONTROL	2
9	99.A06	LOCKNUT, STOVER 3/8-16 USS	1
10	95.06	WASHER, FLAT 3/8 SAE	2
11	41.0039	SPRING, COMP. 9/16 OD X 5/8	1
12	42.0462	LINK, CHUTE ADJUSTMENT	1
13	62.0990	CHUTE, MAIN SNOWBLOWER KX520	1
14	90.0816	BOLT, 1/2-13 USS X 2	1
15	90.0612	BOLT, 3/8-16 USS X 1 1/2	1
16	60.0872	SHIELD, ROTATOR CHAIN COVER	1
17	99.SF0404-1	BOLT, SF 1/4-20 X 1/2 W/RUBBER	4
18	99.SF04	NUT, SF 1/4-20 USS	4
19	83.H409	SPROCKET, #40 9-T HRD 5/8 BORE	1
20	85.K0307	KEY, 3/16 X 5/8	1
21	91.0404	BOLT, 1/4-28 SAE X 1/2	3
22	05.0040	GROMMET, 1 1/2ID, 2-3/8OD, 3/32T	1
23	62.1000	MOUNT, MOTOR HYD.	1
24	85.B0027	BUSHING, 1/2 ID X 5/8 OD X 5/8	1
25	99.SF08	NUT, SF 1/2-13 USS	2
26	21.0113	MOTOR, HYD PEERLESS 1.93 CU.IN	1
27	23.0104	COUPLER, HYD. QUICK MALE 1/4	2
28	29.0092	FITTING, .025 ORIFICE 1/4 PIPE	1
29	20.0210	HOSE, ASM C 1/4 X 78"-2750	2
30	62.0993	POST, CHUTE MOUNT	1
31	99.A04	LOCKNUT, STOVER 1/4-20 USS	1
32	64.0673	CLAMP, HYD. HOSE 3/8-1/4	1
33	90.0410	BOLT, 1/4-20 USS X 1 1/4	1
34	00.0123	DECAL, KEEP HAND AND FEET AWAY	2
35	81.0147	CHAIN, ROLLER #40 X 30-7/8 SS	1
36	81.0056-1	LINK, CONN. #40 SS	1
37	95.04	WASHER, FLAT 1/4 SAE	1
38	05.0117	WASHER, .544ID x .817 x.14 YEL	1
39	05.0116	WASHER, .544ID x .817 x.14 RED	1

# PARTS

## ILLUSTRATED DRAWING SHIELDS, DECALS, & CUTTING EDGE



# PARTS

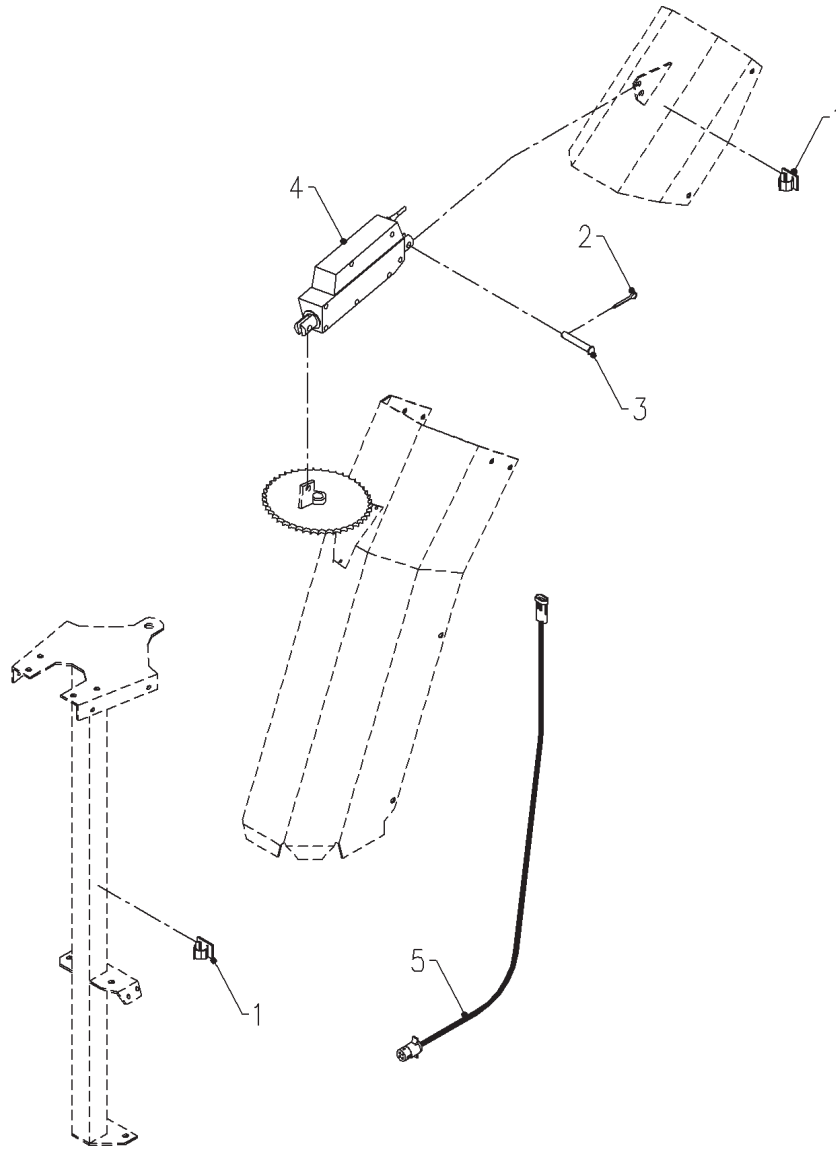
## SHIELDS, DECALS, & CUTTING EDGE

REF.	PART NO.	DESCRIPTION	QTY.
1	97.0608	BOLT, CARRIAGE 3/8 X 1	14
2	78.0054	CUTTING EDGE, 47" THRU HARD	1
3	99.SF06	NUT, SF 3/8-16 USS	18
4	00.0189	DECAL, VENTRAC ORBITAL	1
5	00.0062	DECAL, DANGER SHIELD MISSING	2
6	60.0868	SHIELD, AUGER DRIVE BELT	1
7	90.0406	BOLT, 1/4-20 USS X 3/4	8
8	95.04	WASHER, FLAT 1/4 SAE	8
9	00.0100	DECAL, MADE IN USA	1
10	99.SF04	NUT, SF 1/4-20 USS	5
11	99.E0046	NUT, "U" 1/4-20 EXTRUDED	4
12	60.0870	SHIELD, GEARBOX DRIVE	1
13	95.06	WASHER, FLAT 3/8 SAE	2
14	90.0606	BOLT, 3/8-16 USS X 3/4	2
15	47.0167	KNOB, 1/4-20 X 1-1/4 DIA BLK	1
16	60.0869	COVER, DRIVE PULLEY KX	1
17	00.0122	DECAL, THROWN OBJECT HAZARD	1
18	00.0101	DECAL, HAZARD-MOVING PART	1
19	60.0871	COVER, GEAR BOX/FAN BELT KX	1
20	94.05	WASHER, FLAT 5/16 USS	4
21	64.1087	SHOE, SKID KX/LX	2
22	00.0220	DECAL, GENERAL SAFETY	1
23	00.0208	DECAL, DANGER AUGER HAZARD	2
24	99.SF0506	BOLT, SF 5/16-18 USS X 3/4	8
25	60.0983	CUTTING EDGE, VERTICAL RIGHT	1
26	99.SF05	NUT, SF 5/16-18 USS	12
27	60.0878	CUTTING EDGE, VERTICAL LEFT	1
28	99.SF0606	BOLT, SF 3/8-16 USS X 3/4	4
29	60.0981	WEAR EDGE, AUGER HOUSING KX522	1
30	90.0506	BOLT, 5/16-18 USS X 3/4	4
31	95.05	WASHER, FLAT 5/16 SAE	4
32	60.0885	GUARD, SNOWBLOWER CHUTE	1
33	60.0984	WEAR EDGE, AUGER HOUSING LEFT	1
34	00.0217	DECAL, WARNING READ OWNERS MAN	1

# PARTS/OPTIONS

---

## ILLUSTRATED DRAWING 12 VOLT ACTUATOR DEFLECTOR CONTROL



# PARTS/OPTIONS

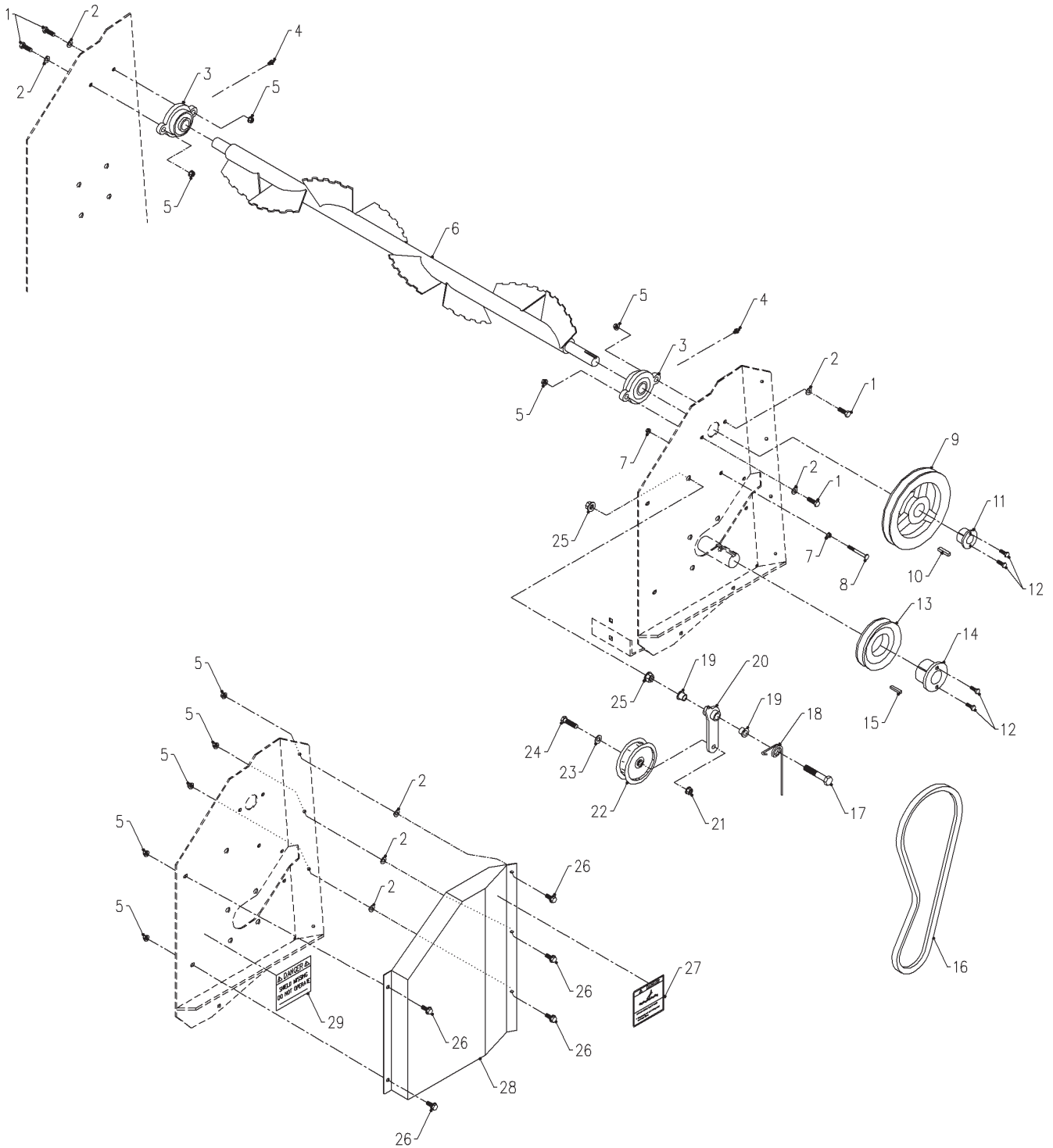
---

## 12 VOLT ACTUATOR DEFLECTOR CONTROL

REF.	PART NO.	DESCRIPTION	QTY.
1	30.0226	CLAMP, WIRE MT ADH. 3/8 GRAY	2
2	02.CP0306	COTTER PIN, 3/32 X 3/4	2
3	03.0610	CLEVIS PIN, 3/8 X 1 1/4 ZP	2
4	70.8025	KIT, 12V ACTUATOR, HB/KX	1
5	32.0074	HARNESS, 12 V ACTUATOR HB/KX	1

# PARTS/OPTIONS

## ILLUSTRATED DRAWING TOP AUGER



# PARTS/OPTIONS

## TOP AUGER

REF.	PART NO.	DESCRIPTION	QTY.
1	90.0508	BOLT, 5/16-18 USS X 1	4
2	95.05	WASHER, FLAT 5/16 SAE	7
3	55.FB16016-1	BEARING, FLANGE BLOCK 1"	2
4	29.GF0001	GREASE FTG, 1/4 SAE ST	2
5	99.SF05	NUT, SF 5/16-18 USS	9
6	80.0370	AUGER, ASM DEEP SNOW	1
7	99.SF04	NUT, SF 1/4-20 USS	2
8	90.0418	BOLT, 1/4-20 USS X 2 1/4	1
9	83.BK70H	PULLEY, 7" H-BUSH	1
10	85.K0408	KEY, 1/4 X 1	1
11	83.H16S	BUSHING, 1" SPLIT 1/4" KEY	1
12	90.0406	BOLT, 1/4-20 USS X 3/4	4
13	83.BK36H	PULLEY, 3.6" H-BUSH	1
14	83.H23	BUSHING, 1 7/16" H	1
15	85.K030410	KEY, 3/16 X 1/4 X 1-1/4	1
16	81.B040	BELT, B40	1
17	90.0822	BOLT, 1/2-13 USS X 2 3/4	1
18	41.0083	SPRING, TORSION RH 1-3/16 IDX7	1
19	85.B0027	BUSHING, 1/2 ID X 5/8 OD X 5/8	2
20	40.0348	IDLER ARM, TOP AUGER DRIVE BLT	1
21	99.SF06	NUT, SF 3/8-16 USS	1
22	83.0037	PULLEY, IDLER FLAT 4" X 3/8	1
23	95.06	WASHER, FLAT 3/8 SAE	1
24	90.0612	BOLT, 3/8-16 USS X 1 1/2	1
25	99.SF08	NUT, SF 1/2-13 USS	2
26	99.SF0506	BOLT, SF 5/16-18 USS X 3/4	5
27	00.0208	DECAL, DANGER AUGER HAZARD	1
28	60.0990	SHIELD, TOP AUGER DRIVE BELT	1
29	00.0062	DECAL, DANGER SHIELD MISSING	1



## LIMITED WARRANTY – VENTRAC TURF EQUIPMENT

*Venture Products, Inc.* (shall be referred to as *V.P.I.*) warrants on the terms and conditions herein, that it will repair, replace, or adjust any part manufactured by *Venture Products Inc.* and found by *Venture Products Inc* to be defective in material and / or workmanship.

Effective September 1<sup>st</sup> 2005, *Ventrac* warranty on Tractors & Attachments (excluding the HG100/HG150 generator) for **Residential use only** is limited to **Three (3) years** from original purchase date. *Ventrac* Tractors & Attachments used **Commercially or for any income producing purpose** is limited to **Two (2) years** from original purchase date. *Ventrac* ET200 turbine blower (turbine only) is limited to **Two (2) years** from original purchase date. *Ventrac* HG100/HG150 generator is limited to **One (1) year** from original purchase date. *Ventrac* Tractors & Attachments used for **Rental** is limited to **180 days** from original purchase date. (**NOTE:** All accessories such as: 3-point hitch, foot pedal, dual wheel kit, etc. will be covered under the above warranty periods as they would apply provided they are installed by an Authorized *Ventrac* Dealer.) This warranty may be transferred and will carry the remainder of the warranty starting from the Original Purchase/Registration date with the dealership and/or *V.P.I.* In the event that product/s originally registered as **(3) year Residential use** are to be transferred to a commercial user the warranty would change to the remainder of **(2) year Commercial use** starting from the Original Purchase/Registration date with the dealership and/or *V.P.I.*

If this warranty covers a consumer product as defined by the Magnusson-Moss warranty act, no warranties, express or implied, (including, but not limited to, the warranty of merchantability or fitness for a particular purpose) shall extend beyond the applicable time period stated in bold face type above.

If this warranty covers a product used commercially or for any income producing purpose, the foregoing warranties are in lieu of all other warranties and no representations, guarantees or warranties, express or implied, (including, but not limited to, a warranty of merchantability or fitness for a particular purpose), are made by *V.P.I.* in connection with the manufacture or sale of its products.

The engine warranty is covered by its respective engine manufacturer. Please refer to the engine manufacturer's warranty statement that is included in the owner's manual.

The *Ventrac* turf equipment, including any defective parts, must be returned to an Authorized *Ventrac* Dealer within the warranty period. The warranty shall extend to the cost to repair or replace (as determined by *V.P.I.*) the defective part. **The expense of pickup and delivery of equipment, service call drive time or any transportation expense incurred for warranty repair is the sole responsibility of the owner and is not covered under warranty by *Ventrac* and/or *V.P.I.*** *V.P.I.*'s responsibility in respect to claims is limited to making the required repairs or replacements, and no claim of breach of warranty shall be cause for cancellation or rescission of the contract of sale of any *Ventrac* equipment. Proof of purchase may be required by the dealer to substantiate any warranty claim. Only warranty work performed and submitted by an Authorized *Ventrac* Dealer may be eligible for warranty credit.

This warranty extends only to *Ventrac* turf equipment operated under normal conditions and properly serviced and maintained. The warranty expressly does **NOT** cover: (a) any defects, damage or deterioration due to normal use, wear and tear, or exposure; (b) normal maintenance services, such as cleaning, lubrication, oil change; (c) replacement of service items, such as oil, lubricants, spark plugs, belts, rubber hoses or other items subject to normal service replacement; (d) damage or defects arising out of, or relating to abuse, misuse, neglect, alteration, negligence or accident; (e) repair or replacement arising from





## LIMITED WARRANTY – VENTRAC TURF EQUIPMENT

operation of, or use of the turf equipment which is not in accordance with operating instructions as specified in the operator's manual or other operational instructions provided by *V.P.I.*; (f) repair or replacement arising as a result of any operation from Ventrac turf equipment that has been altered or modified so as to, in the determination of *V.P.I.*, adversely affect the operation, performance or durability of the equipment or that has altered, modified or affected the turf equipment so as to change the intended use of the product; (g) repair or replacement necessitated by the use of parts, accessories or supplies, including gasoline, oil or lubricants, incompatible with the turf equipment or other than as recommended in the operator's manual or other operational instructions provided by *V.P.I.*; (h) repairs or replacements resulting from parts or accessories which have adversely affected the operation, performance or durability of the turf equipment; or (i) damage or defects due to or arising out of repair of *Ventrac* turf equipment by person or persons other than an authorized *Ventrac* service dealer or the installation of parts other than genuine *Ventrac* parts or *Ventrac* recommended parts.

The sole liability of *V.P.I.* with respect to this warranty shall be repair and replacement as set forth herein. *V.P.I.* shall have no liability for any other cost, loss, or damage. In particular *V.P.I.* shall have no liability or responsibility for: (i) expenses relating to gasoline, oil, lubricants; (ii) loss, cost or expense relating to transportation or delivery of turf equipment from the location of owner or location where used by owner to or from any Authorized *Ventrac* Dealer; (iii) travel time, overtime, after hours time or other extraordinary repair charges or charge relating to repairs or replacements outside of normal business hours at the place of business of an Authorized *Ventrac* Dealer; (iv) rental of like or similar replacement equipment during the period of any warranty repair or replacement work; (v) any telephone or telegram charges; (vi) loss or damage to person or property other than that covered by the terms of this warranty; (vii) any claims for lost revenue, lost profit or additional cost or expense incurred as a result of a claim of breach of warranty; or (viii) attorney's fees.

The remedies of buyer set forth herein are exclusive and are in lieu of all other remedies. The liability of *V.P.I.*, whether in contract, tort, under any warranty, or otherwise, shall not extend beyond its obligation as set forth herein. *V.P.I.* shall not be liable for cost of removal or installation nor shall *V.P.I.* be responsible for any direct, indirect, special or consequential damages of any nature. In no event shall *V.P.I.* be liable for any sum in excess of the price received for the goods for which liability is claimed.

There are no representations or warranties which have been authorized to the buyer of the turf equipment other than set forth in this warranty. Any and all statements or representations made by any seller of this equipment, including those set forth in any sales literature or made orally by any sales representative, are superseded by the terms of this warranty. Any affirmation of fact or promise made by *V.P.I.* or any of its representatives to the buyer which relates to the goods that are the subject to this warranty shall not be regarded as part of the basis of the bargain and shall not be deemed to create any express warranty that such goods shall conform to the affirmation or promise.

No employee, distributor, or representative is authorized to change the foregoing warranties in any way or grant any other warranty on behalf of *V.P.I.*

Some states do not allow limitations on how long an implied warranty lasts or allow the exclusion on limitation of incidental or consequential damages, so the above limitation or exclusion may not apply to you.

This warranty gives you specific legal rights, and you may also have other rights which vary from state to state.

This warranty applies to all *Ventrac* turf equipment sold in the United States and Canada.