



OWNER/OPERATOR'S MANUAL & PARTS LIST

TREE FARM MOWER

Model LQ450

Serial # AA1001-AC1306



Get Attached... Get it DONE!!!



Revised 02/03/20
09.10036 Rev. 01



Orrville, OH
www.ventrac.com

TO THE OWNER

Product Identification

If you need to contact an Authorized Ventrac Dealer for information on servicing your product, always provide the Product Model and Serial numbers.

Please fill in the following information for future reference. See picture below to find the location of the identification number. Record them in the spaces provided below.

Date of Purchase: Month _____ Day _____ Year _____

Dealer: _____

Dealer Address: _____

Dealer Phone Number: _____

Dealer FAX Number: _____

Model # (A): _____

Serial # (B): _____

Affix Part/Serial Number label here

Venture Products Inc. reserves the right to make changes in design or specifications without obligation to make like changes on previously manufactured products.

TABLE OF CONTENTS

INTRODUCTION **Section A**

Description	A-1
Specifications	A-1

SAFETY **Section B**

Safety Symbols	B-1
Decals	B-2
General Safety Procedures	B-3
Safety Operation and Techniques	B-4

OPERATION **Section C**

Attaching	C-1
Detaching	C-1
General Operating Techniques & Tips	C-2

MAINTENANCE **Section D**

Lubrication	D-1
Removal & Reinstallation of Blades	D-1
Mower Tire Pressure	D-1
Storage	D-1
Sharpening Blades	D-1

PARTS & ILLUSTRATED DRAWINGS **Section E**

Main Deck	E-1 & 2
Hitch Frame, Wheel, & Axle Grass Guard	E-3 & 4
Spindles & Pulleys (Serial # AA1001-1140)	E-5 & 6
Spindles & Pulleys (Serial # AB1141-).	E-7 & 8

PARTS/OPTIONS **Section F**

Fenders & Shields for LT3000	F-1 & 2
Fenders & Shields for LE3100/3200	F-3 & 4

WARRANTY

INTRODUCTION

Product Description

The VENTRAC LQ450 Tree Farm Mower is designed to maintain grass and small brush growth on tree farms and nurseries. Two counter rotating blades discharge the cut grass to the rear and into the middle section of the mowing path. Suspended front chains allow tall grass to be cut more effectively and reduce the potential for front discharge cuttings or debris. The mower should never be operating when a person is standing or positioned to the front or to the front sides of the mower.

A single swivel tire is located on the front center frame of the mower. The position greatly reduces tree branch interference. Skid shoes on both sides provide anti-scalping and blade protection. Branch lifters and tractor tire covers reduce branch damage. Three pins provide 3 cutting height options.

In dry and dusty conditions the engine and chassis will need more frequent cleaning as the mower discharge is directed under the tractor. A special shroud over the top of the engine is standard on LT3000 tractors manufactured after serial # HAA1201. Contact factory for shrouds for earlier production LT3000 tractors.

If this mower is purchased to mow on slopes where there is roll-over potential, please purchase the roll cage option and seat belt for the tractor.

Careful, proper and safe operation of this mower will provide efficient, effective, and attractive results.

Ventrac LQ450 Specifications

Overall width	46 inches
Cutting width	45 inches
Cutting height options	2-1/4", 3-1/2", 4-3/4"
Height	16 inches
Length	53 inches
Weight	245 pounds

SAFETY



ATTENTION:

This symbol identifies potential health and safety hazards. It marks safety precautions. Your safety and the safety of others is involved.

SIGNAL WORD DEFINITIONS

DANGER

Indicates an imminently hazardous situation which, if not avoided, will result in death or serious injury. This signal word is limited to the most extreme cases.

WARNING

Indicates a potentially hazardous situation which, if not avoided, could result in death or serious injury.

CAUTION

Indicates a potentially hazardous situation which, if not avoided, may result in minor or moderate injury and/or property damage. It may also be used to alert against unsafe practices.

SAFETY

Decals

The following safety decals must be maintained on your Ventrac LQ450 mower. If any decals are faded or missing, contact your dealer promptly for replacements.



A



B



C



D



E

Decal	Page & Location	Description	Part Number
A	E-1, #4	Danger - Shield Missing	00.0062
B	E-1, #9 (3)	Danger - Keep Hands and Feet Away	00.0123
C	E-1, #18	Danger - Thrown Object Hazard	00.0122
D	E-1, #20	Warning - Moving Part Hazard	00.0101
E	E-1, #25	Warning - Read Owner's Manual	00.0217

SAFETY



General Safety Procedures for Ventrac Tractors, Attachments, & Accessories



Read and understand the operator's manual before operating this equipment.

Observe and follow all safety decals.

DO NOT let children or any untrained person operate the tractor or attachment. Make sure that all operators of this equipment are thoroughly trained in using it safely.

Never allow additional riders on the tractor or attachments.

DO NOT operate tractor or attachments if you are under the influence of alcohol, drugs, medication that may impair judgment or cause drowsiness, or if you are not feeling well.

Operate all controls from the operator's seat only.

Before operating equipment, make sure all shields are in place and fastened.

Ensure the attachment or accessory is locked or fastened securely to the tractor before operating. See tractor manual for locking procedure.

Ensure that all bystanders are clear of the tractor and attachment before operating. Be especially careful and observant if other people are present. Never assume that bystanders will remain where you last saw them.

Always look in the direction the tractor is moving.

Never direct the discharge of any attachment in the direction of people, animals, buildings, vehicles, or objects of value.

Immediately stop at any sign of equipment failure and correct the problem before continuing to operate. An unusual noise can be a warning of equipment failure.

Before adjusting, cleaning, lubricating, or changing parts on the tractor or attachment, engage the parking brake, lower the attachment to the ground, stop the engine, and remove the ignition key.

To prevent the risk of uncontrolled equipment movement on tractors equipped with 2 speed axles, always shift the transaxle range with the tractor stationary on level ground and with the parking brake engaged.

If equipment is to be left unattended, engage the parking brake, lower the attachment to the ground, stop the engine, and remove the ignition key.

SAFETY

LQ450 Safety Procedures

WARNING

Before making any repairs or adjustments, lower attachment to the ground, set parking brake, shut the engine off, and remove the key.

WARNING

Read and understand the operator's manual before operating this equipment.

Before mowing, clear the area of stones, sticks, and other foreign objects that can be thrown by the mower.

Use extra care when mowing around trees, shrubs, and other objects that may block your vision.

Disengage the PTO when you are not mowing.

When mowing on a steep incline, always mow uphill and downhill. Never mow across a steep incline.

OPERATION

Operating Instructions

Attaching:

The mower in its parked position from last usage will have its hitch arms extended for re-engagement. **Note:** It will be easier to attach if the mower is blocked up with appropriate material to keep the back high enough to allow for an easier hook-up.

1. Drive the tractor slowly forward to align the hitch lift arms with the mating arms on the mower. Raise the hitch to align and complete the engagement.
2. Once completely engaged, close the front hitch locking lever.*
3. Engage the parking brake and shut off engine.
4. Place attachment belt over the lower groove of the PTO drive pulley on the hitch. Make certain that the deck belt is properly routed and engaged in each pulley.
5. Engage the PTO spring tension lever on the mower deck.
6. ALWAYS check that the deck belt is properly located in each pulley groove before attempting to operate.
7. Reinstall deck shields.

Detaching:

1. Park the tractor on a level surface and set the parking brake.
2. Lower the mower to the ground.
3. Stop the engine.
4. Disengage the PTO spring tension lever on the mower deck.
5. Remove the attachment belt from the PTO drive pulley on the hitch.
6. Remove the 2 slider rods from the front tractor fenders.
7. Disengage the hitch locking lever.*
8. Restart the tractor and slowly back away from the mower. **NOTE:** It will be easier to re-attach if the mower is blocked up with appropriate material to keep the back high enough to allow for an easier hook-up.

The fenders may remain on the tractor if so desired.

*Refer to tractor manual for operation of controls.

OPERATION

Operating Techniques and Tips:

Be sure to select or confirm that the mower is set to cut the height that you prefer. The cutting height is controlled by three pins; one on the front and two on the back. To change cutting heights, shut off the tractor engine and remove the key from the ignition. Release the tension on the attachment belt by disengaging the PTO spring tension lever. Pull the pin from the front of the deck and manually lift or lower the front of the deck to the preferred cutting height. Repeat the process for the two back pins. Engage the spring tension lever to tighten belt and reinstall shields.

⚠ WARNING

Never adjust cutting height with the PTO engaged

Operator must be sitting on the tractor seat before the PTO can be engaged. Have the engine rpms between 2,000 and 3,000 before engaging the PTO switch. Near full engine rpms (3,250 is recommended for most mowing. If a good cut can be maintained and there is sufficient power, reducing the rpms by 200 or 300 will result in better fuel economy and reduction in wear-and-tear on the equipment.

Travel to and from the area to be mowed should generally be done with the mower raised in transport position by the tractor hydraulics. This saves wear-and-tear on the mower and needless scuffing and rolling over the various surfaces between mowing jobs. Moderate speed should be used in transport in order to maintain control and reduce the shock load from uneven terrain. Disengage the PTO to prevent air turbulence over dusty surfaces and/or when traveling over rough terrain.

When mowing, always place the front hitch lift lever in the float position by moving it forward until the detent engages. The lever will stay in this position after it engages.

Wet or lush grass has some tendency to build up under the deck. Periodic checking, especially if mowing performance seems to be reduced, will let the operator know if the deck should be cleaned.

Blades should be kept in good condition. Sharp blades will increase efficiency and improve the quality of cut.

⚠ WARNING

Be very cautious when mowing slopes. The roll cage option with a seat belt is recommended.

MAINTENANCE

Lubrication:

*Grease zerks are located on top of each spindle. Apply slowly 2-3 pumps of grease per spindle after every 50 hours of operation. Do not over grease. In very dirty, sandy or wet conditions, more frequent greasing may be advisable.

Removal and Reinstallation of Mower Blades for Sharpening or Replacement:

1. Blades installed after serial #AA1032 are bi-directional—sharp on both sides. Since one spindle turns clockwise and one counter clockwise, the blades can simply be exchanged to get a new cutting edge. The second time the blades need to be sharpened, it is advisable to sharpen both sides so that the cycle can be repeated. **NOTE:** The left blade spindle has a standard right hand threaded bolt and needs to be turned counter clockwise to remove blade. The right spindle has a left hand threaded bolt and needs to be turned clockwise to remove.
2. To remove each blade, place a short piece of 2 x 4 wood between the end of the blade and an appropriate structural part of the underside of the deck to prevent rotation. Wearing gloves is recommended.
3. Use a 3/4 inch wrench to loosen the blade bolt and remove the blade to sharpen or replace.
4. When reinstalling a blade, the wood block must be placed on the opposite side to prevent rotation for tightening. Tighten so that blade is firmly held in place. Additional tightening will occur while mowing. This is natural because of the blade rotating.
5. Always install the “winged” bracket between the bolt head and the bottom of the blade. This serves as a support washer as well as reducing the potential for bearing damage from wrapping string or wire.

Mower Tire Pressure:

Mower tire inflation pressure should be a maximum of 20 psi.

Storage:

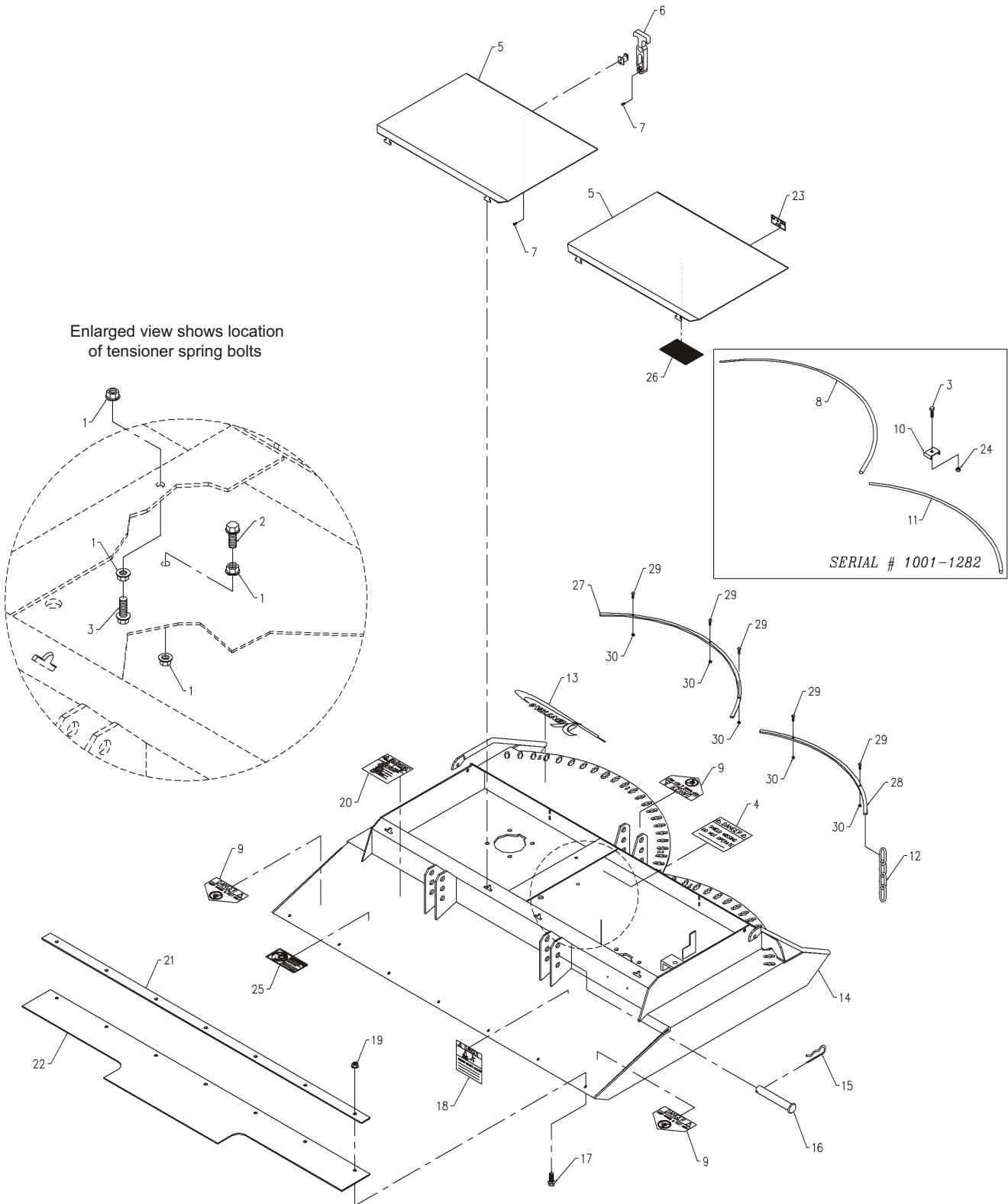
Before the mower is stored, thoroughly clean both the underside of the deck and any accumulated clippings or debris on the top side. If mower is set up on its side for storage, be sure to secure it to prevent an accidental fall.

Sharpening Blades:

It is recommended that blades be sharpened and balanced by a professional. Maintain balance, same bevel, and length of sharpened surface.

PARTS

ILLUSTRATED DRAWING MAIN DECK



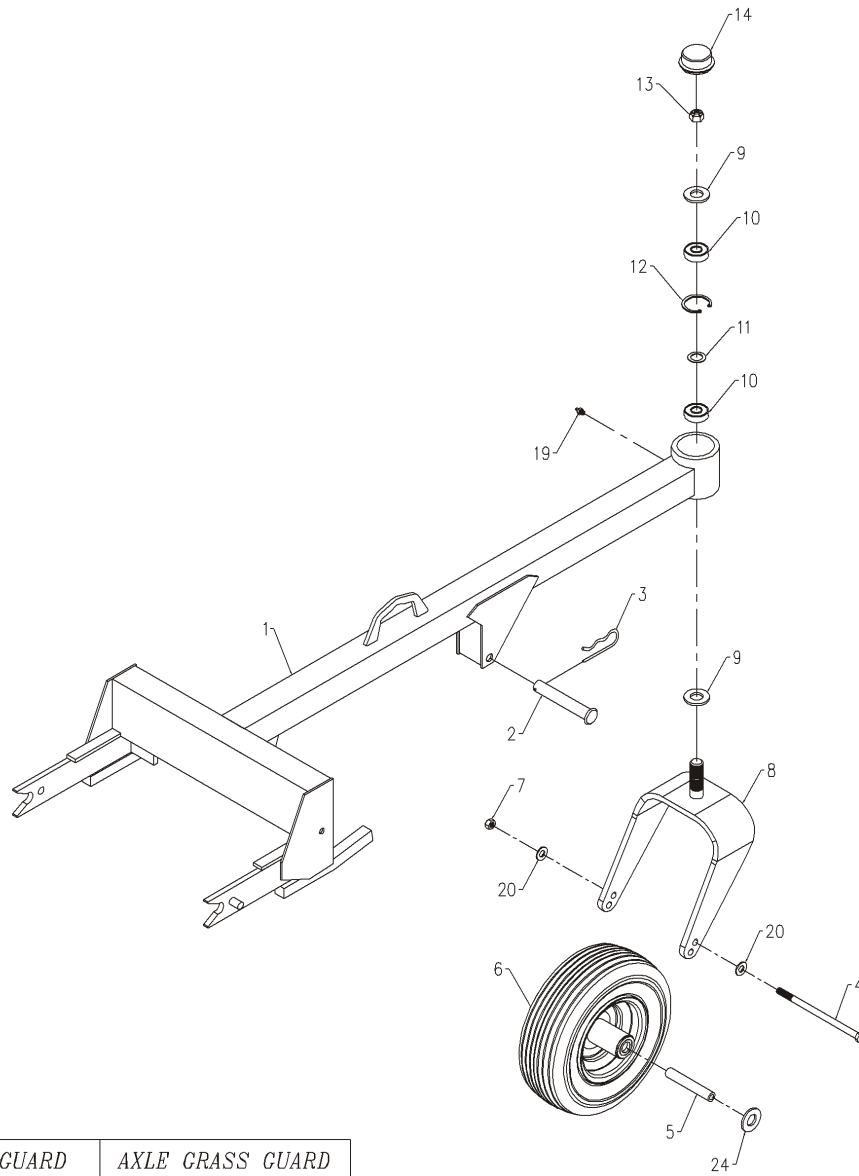
PARTS

MAIN DECK

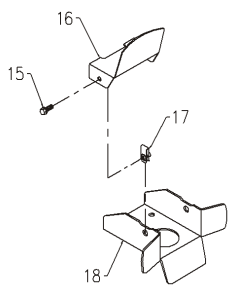
REF.	PART NO.	DESCRIPTION	QTY.
1.	99.SF04	NUT, SF 1/4-20 USS	4
2.	90.0410	BOLT, 1/4-20 USS X 1 1/4	1
3.	90.0408	BOLT, 1/4-20 USS X 1	6
4.	00.0062	DECAL, DANGER SHIELD MISSING	1
5.	60.0761	COVER, TOP DECK	2
6.	47.0127	LATCH, RUBBER DRAW T-HANDLE	2
7.	99.K0072	MACHINE SCREW, 10-24 X 1/2 ZP	6
8.	64.0864	ROD, 3/8" CHAIN RETAINER LEFT (Serial # 1001-1282)	1
9.	00.0123	DECAL, KEEP HAND AND FEET AWAY	3
10.	64.0876	CLAMP, 3/8 CHAIN ROD (Serial # 1001-1282)	5
11.	64.0865	ROD, 3/8" CHAIN RETAINER RIGHT (Serial # 1001-1282)	1
12.	81.0136	CHAIN, 1/4 PLATED X 4 LINKS LG.	39
13.	00.0189	DECAL, VENTRAC ORBITAL	1
14.	62.0864	DECK, MAIN	1
15.	02.HP0416	HAIRPIN, 1/8 X 2	2
16.	03.0816	CLEVIS PIN, 1/2 X 2	2
17.	99.SF0506	BOLT, SF 5/16-18 USS X 3/4	7
18.	00.0122	DECAL, THROWN OBJECT HAZARD	1
19.	99.SF05	NUT, SF 5/16-18 USS	7
20.	00.0101	DECAL, HAZARD-MOVING PART	1
21.	64.0889	CLAMP, REAR BELTING	1
22.	44.0180	FLAP, 1/8 REAR BELTING	1
23.	00.0100	DECAL, MADE IN USA	1
24.	99.A04	LOCKNUT, STOVER 1/4-20 USS	5
25.	00.0217	DECAL, WARNING READ OWNERS MAN	1
26.	00.0236	DECAL, LQ450 BELT ROUTING	1
27.	64.1465	RETAINER, CHAIN LH LQ (Serial # 1283-)	1
28.	64.1464	RETAINER, CHAIN RH LQ (Serial # 1283-)	1
29.	99.K0047	MACHINE SCREW, #10-32 X 3/4	5
30.	99.A1032N	LOCKNUT, NYLON 10-32 STAINLESS	5

PARTS

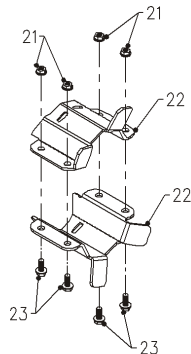
ILLUSTRATED DRAWING HITCH FRAME, WHEEL, & AXLE GRASS GUARD



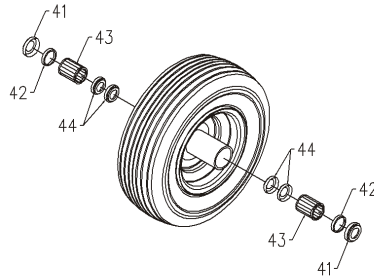
AXLE GRASS GUARD
SERIAL # 1001-1200



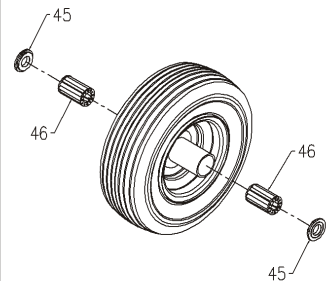
AXLE GRASS GUARD
SERIAL # 1201-



RIM WITH 1-1/8" ID CENTER TUBE



SERIAL # 1201-
AND/OR
RIM WITH 1-3/8" ID CENTER TUBE



PARTS

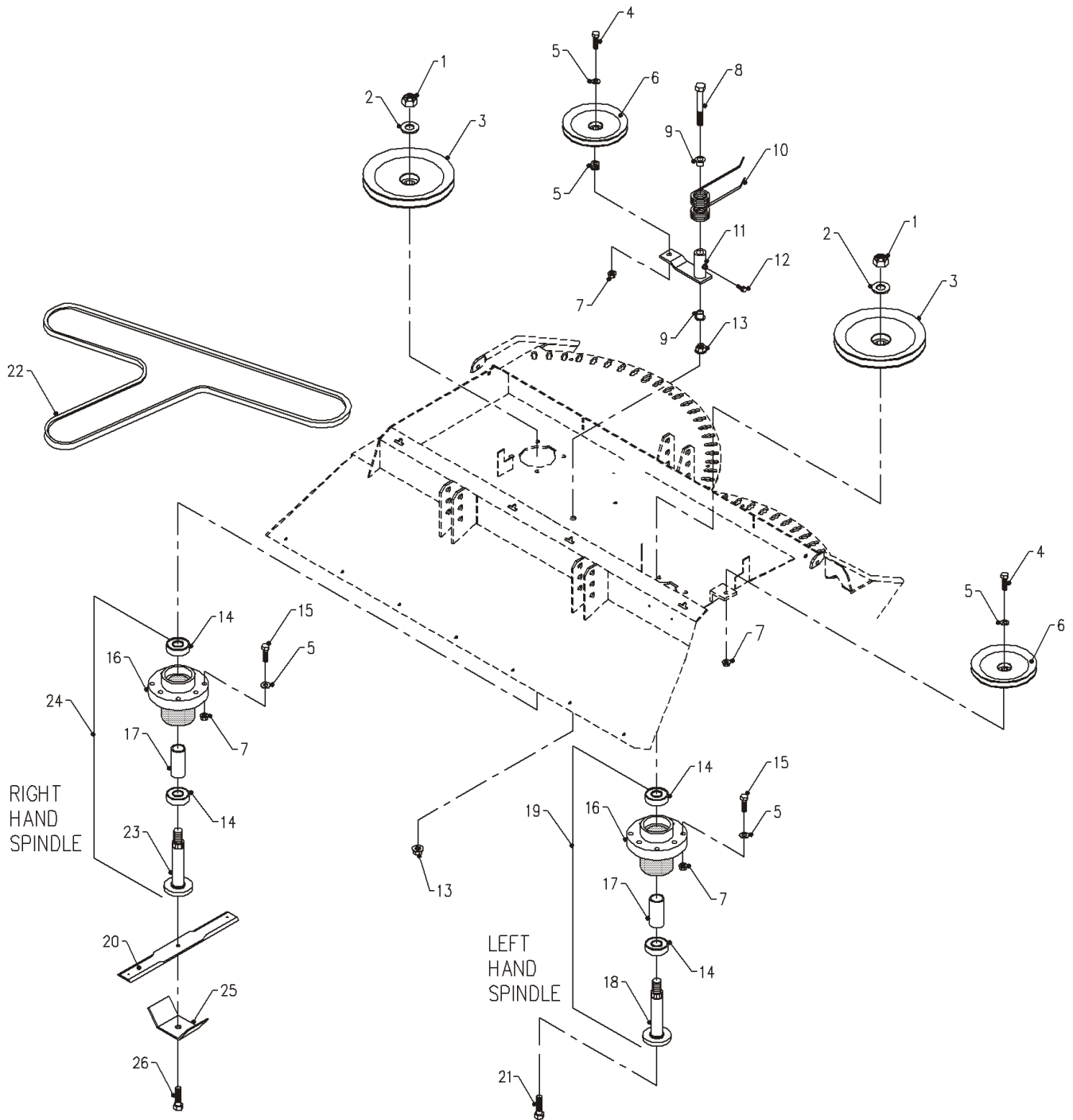
HITCH FRAME, WHEEL, & AXLE GRASS GUARD

REF.	PART NO.	DESCRIPTION	QTY.
1.	62.0865	FRAME, HITCH/CARRIER	1
2.	03.0824	CLEVIS PIN, 1/2 X 3 OAL ZP	1
3.	02.HP0416	HAIRPIN, 1/8 X 2	1
4.	90.0660	BOLT, 3/8-16 USS X 7-1/2	1
5.	50.0050	TUBE, RD 7/16 X 3/4 X 6-1/8L	1
6.	53.0086	WHEEL, ASM 13 X 5 X 6 HM (Serial # 1001-1200)	1
6.	53.0133	WHEEL, ASM 13 X 5 X 6 CASTER (Serial # 1201 -)	1
7.	99.A06C	LOCKNUT, CENTER 3/8-16	1
8.	50.0183	YOKE, CASTER 13", HIGH/LOW	1
9.	99.B0057-2	WASHER, MACH3/4 X1-1/4 10GA ZP	2
10.	55.0023	BEARING, BALL .75 ID X 1.78 OD	2
11.	99.B0052	SHIM, STEEL 3/4 X 1 X .062	1
12.	04.0013	SNAP RING, INT .062 X 1.75	1
13.	99.A12NF	LOCKNUT, STOVER 3/4-16 SAE	1
14.	53.0080	DUST CAP, BEARING MOWER CASTER	1
15.	99.SF0405-1	BOLT, SF 1/4-20 X 5/8 W/RUBBER (Serial # 1001-1200)	8
16.	64.1118	GUARD, AXLE GRASS TOP (Serial # 1001-1200)	4
17.	99.E0046	NUT, "U" 1/4-20 EXTRUDED (Serial # 1001-1200)	8
18.	64.1117	GUARD, AXLE GRASS BOTTOM (Serial # 1001-1200)	4
19.	29.GF0001	GREASE FTG, 1/4 SAE ST	1
20.	95.06	WASHER, FLAT 3/8 SAE	2
21.	99.SF05	NUT, SF 5/16-18 USS (Serial # 1201 -)	16
22.	64.1286	BRACKET, TRACTOR AXLE GUARD (Serial # 1201 -)	8
23.	99.SF0506	BOLT, SF 5/16-18 USS X 3/4 (Serial # 1201 -)	16
24.	95.12	WASHER, FLAT 3/4 SAE (as needed)	1
41.	47.0215	CAP, END REPLACEMENT	2
42.	44.0201	SEAL, FELT REPLACEMENT	2
43.	55.0053	BEARING, ROLLER REPLACEMENT	2
44.	99.G0013	WASHER, ROLLER BEARING	4
45.	55.0066	BEARING, RETAINER 3/4"	2
46.	55.0065	BEARING, 3/4 ROLLER 2-1/4" LG	2

PARTS

ILLUSTRATED DRAWING SPINDLES & PULLEYS

(Serial # AA1001-AA1140)



PARTS

SPINDLES & PULLEYS

(Serial # AA1001-AA1140)

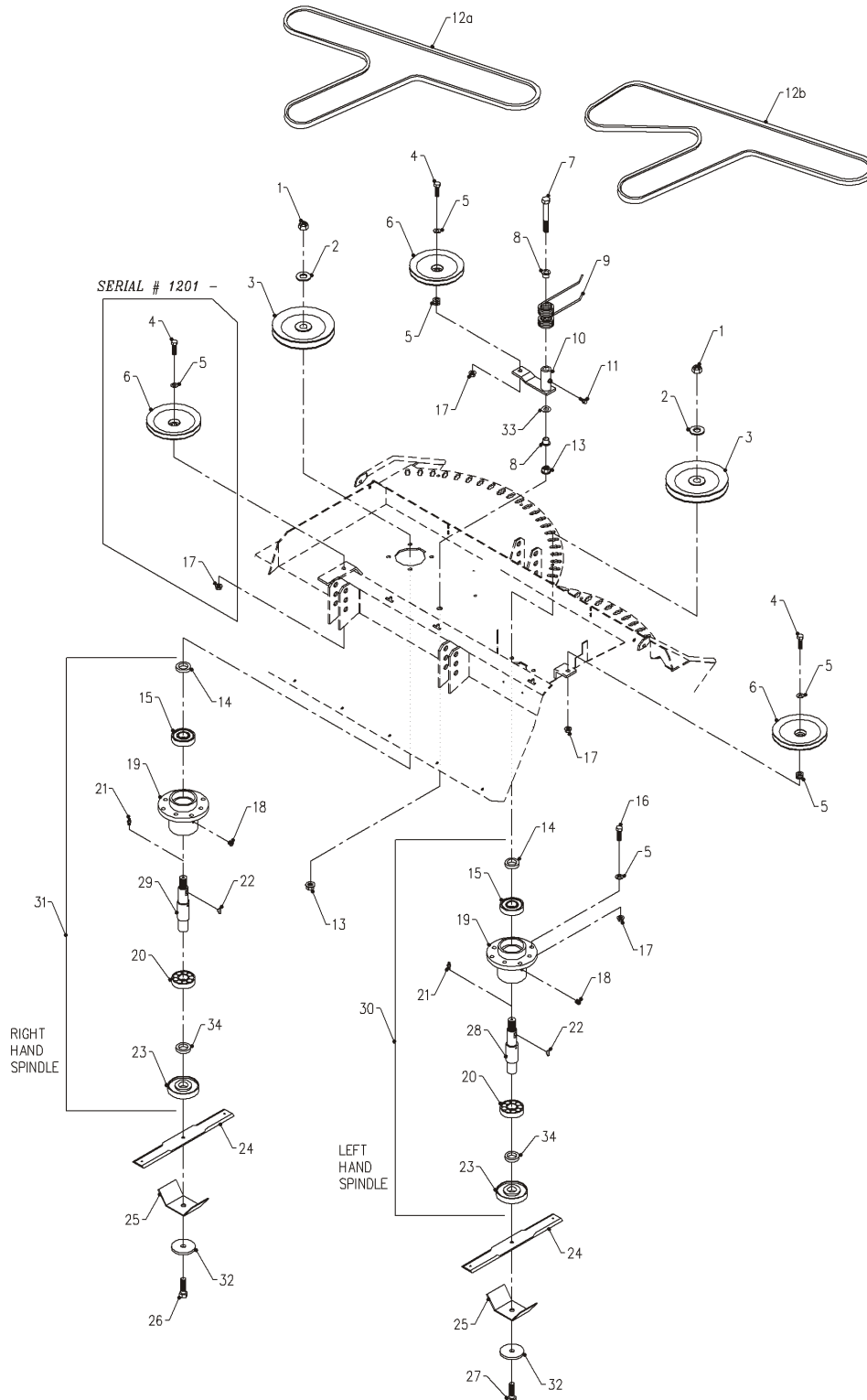
REF.	PART NO.	DESCRIPTION	QTY.
1.	99.A12NF	LOCKNUT, STOVER 3/4-16 SAE	2
2.	95.12.	WASHER, FLAT 3/4 SAE.	2
3.	83.0034	SUB. 70.8040.	2
4.	90.0614	BOLT, 3/8-16 USS X 1 3/4	2
5.	95.06.	WASHER, FLAT 3/8 SAE	13
6.	83.0031	PULLEY, V-IDLER 5 1/4 X 3/8 ID.	2
7.	99.SF06	NUT, SF 3/8-16 USS	10
8.	90.0832	BOLT, 1/2-13 USS X 4	1
9.	85.B0027.	BUSHING, 1/2 ID X 5/8 OD X 5/8	2
10.	41.0065	SPRING, DOUBLE TORSION BLACK	1
11.	40.0281	ARM, BELT IDLER	1
12.	99.SF0404	BOLT, SF 1/4-20 X 1/2	1
13.	99.SF08	NUT, SF 1/2-13 USS	2
14.	55.0035	BEARING, BALL 25MM X 62 MM	4
15.	90.0610	BOLT, 3/8-16 USS X 1 1/4	8
16.	87.0178	SPINDLE HOUSING	2
17.	87.0179	SPACER, BALL BRG/SPINDLE	2
18.	87.0184-1	SHAFT, LEFT HAND THREAD.	1
19.	87.0184	SPINDLE ASSEMBLY - 1/2-20 LH THREAD.	1
20.	79.0048*	BLADE, DOUBLE CUT NO LIFT	2
21.	91.0810L.	BOLT, 1/2-20 SAE X 1 1/4 LH ZP	1
22.	81.AA112	BELT, AA112	1
23.	87.0181	SHAFT, RIGHT HAND THREAD	1
24.	87.0176	SPINDLE ASSEMBLY - 1/2-20 RH THREAD.	1
25.	64.0688	GUARD, SPINDLE/STRING WRAPPER.	2
26.	91.0810	BOLT, 1/2-20 SAE X 1 1/4	1

*The bi-directional blade replaces both the right hand blade (79.0042) and the left hand blade (79.0041) used on models serial # AA1001-AA1032.

PARTS

ILLUSTRATED DRAWING SPINDLES & PULLEYS

(Serial # AB1141 -)



PARTS

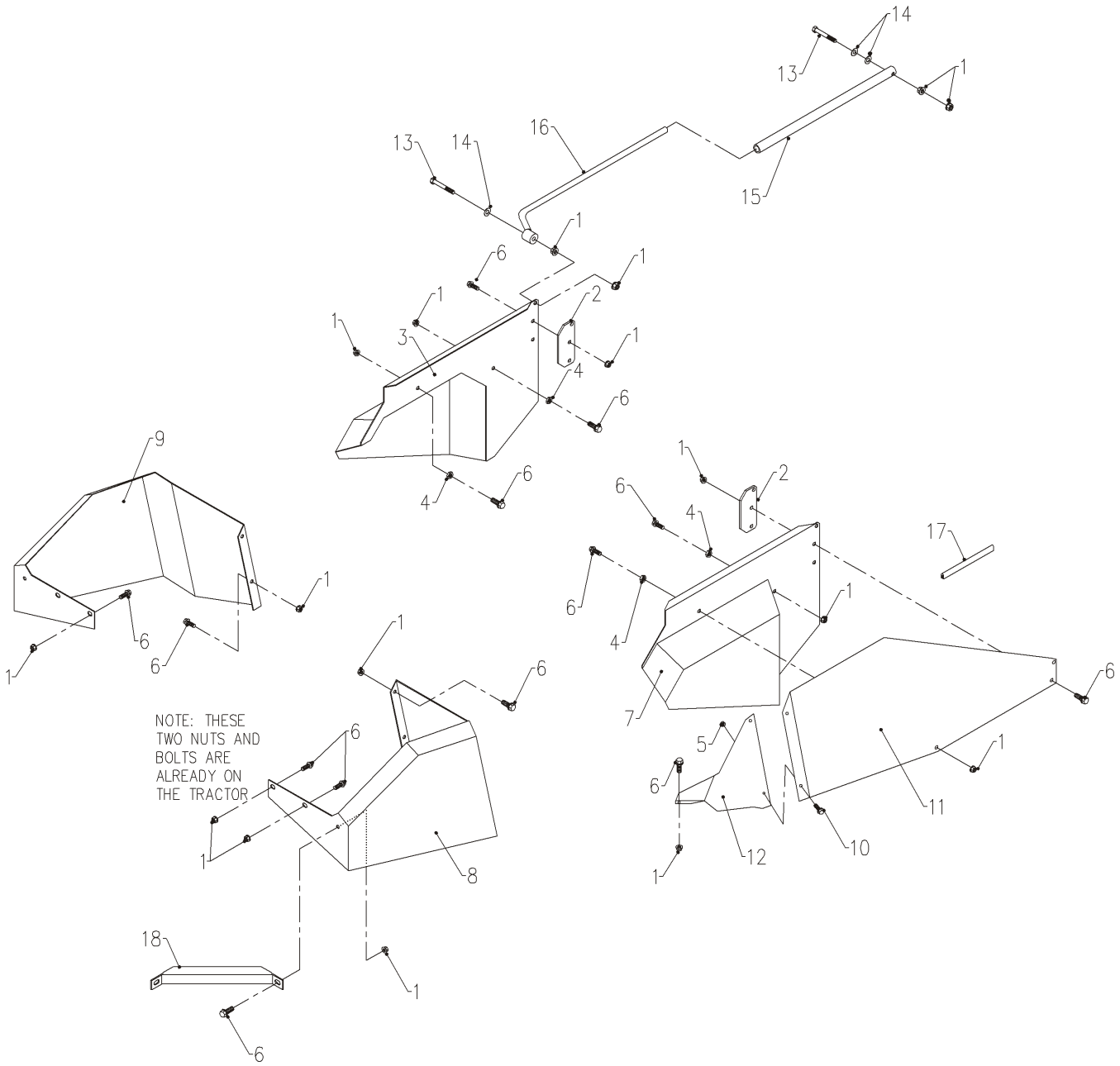
SPINDLES & PULLEYS

(Serial # AB1141 -)

REF.	PART NO.	DESCRIPTION	QTY.
1.	99.A12NF	LOCKNUT, STOVER 3/4-16 SAE	2
2.	99.B0057-2	WASHER, MACH3/4 X1-1/4 10GA ZP	2
3.	83.0051	PULLEY, 6-1/2, 25 MM STR. BORE	2
4.	90.0614	BOLT, 3/8-16 USS X 1 3/4	3
5.	95.06.	WASHER, FLAT 3/8 SAE	17
6.	83.0031	PULLEY, V-IDLER 5 1/4 X 3/8 ID.	3
7.	90.0832	BOLT, 1/2-13 USS X 4	1
8.	85.B0027.	BUSHING, 1/2 ID X 5/8 OD X 5/8	2
9.	41.0065	SPRING, DOUBLE TORSION BLACK	1
10.	40.0281	ARM, BELT IDLER	1
11.	99.SF0404	BOLT, SF 1/4-20 X 1/2	1
12a	81.AA112	BELT, AA112 (Serial # 1141-1200)	1
12b	81.AA128	BELT, AA128 (Serial # 1201 -)	1
13.	99.SF08	NUT, SF 1/2-13 USS	2
14.	85.B0080.	BUSHING, 1-1/2 OD, 1 ID	2
15.	55.0057	BEARING, BALL X2 SIDED SHIELD	2
16.	90.0610	BOLT, 3/8-16 USS X 1 1/4	8
17.	99.SF06	NUT, SF 3/8-16 USS	11
18.	29.GF0017.	RELIEF FITTING	2
19.	87.0222-1	SPINDLE, HOUSING STEEL.	2
20.	55.0035	BEARING, BALL 25MM X 62 MM	2
21.	29.GF0001.	GREASE FTG, 1/4 SAE ST	2
22.	85.W0406	KEY, WOODRUFF 1/4 X 3/4	2
23.	87.0210	SPINDLE, FLANGE SHIELD.	2
24.	79.0048	BLADE, DOUBLE CUT NO LIFT	2
25.	64.0688	GUARD, SPINDLE/STRING WRAPPER.	2
26.	91.0814	BOLT, 1/2-20 SAE X 1 3/4	1
27.	91.0814L.	BOLT, 1/2-20 SAE X 1 3/4 LH ZP	1
28.	87.0208-2	SHAFT, SPINDLE LH THREAD 25MM.	1
29.	87.0209-2	SHAFT, SPINDLE RH THREAD 25MM	1
30.	87.0223	SPINDLE, ASM LH KEY 25MM STEEL	1
31.	87.0222	SPINDLE, ASM RH KEY 25MM STEEL	1
32.	99.B0091.	WASHER, .510 ID X 2-1/2 OD 1/4	2
33.	95.08.	WASHER, FLAT 1/2 SAE.	1
34.	85.B0082.	BUSHING, SPINDLE SHAFT SPACER.	2

PARTS

ILLUSTRATED DRAWING OPTIONAL FENDERS & SHIELDS FOR LT3000



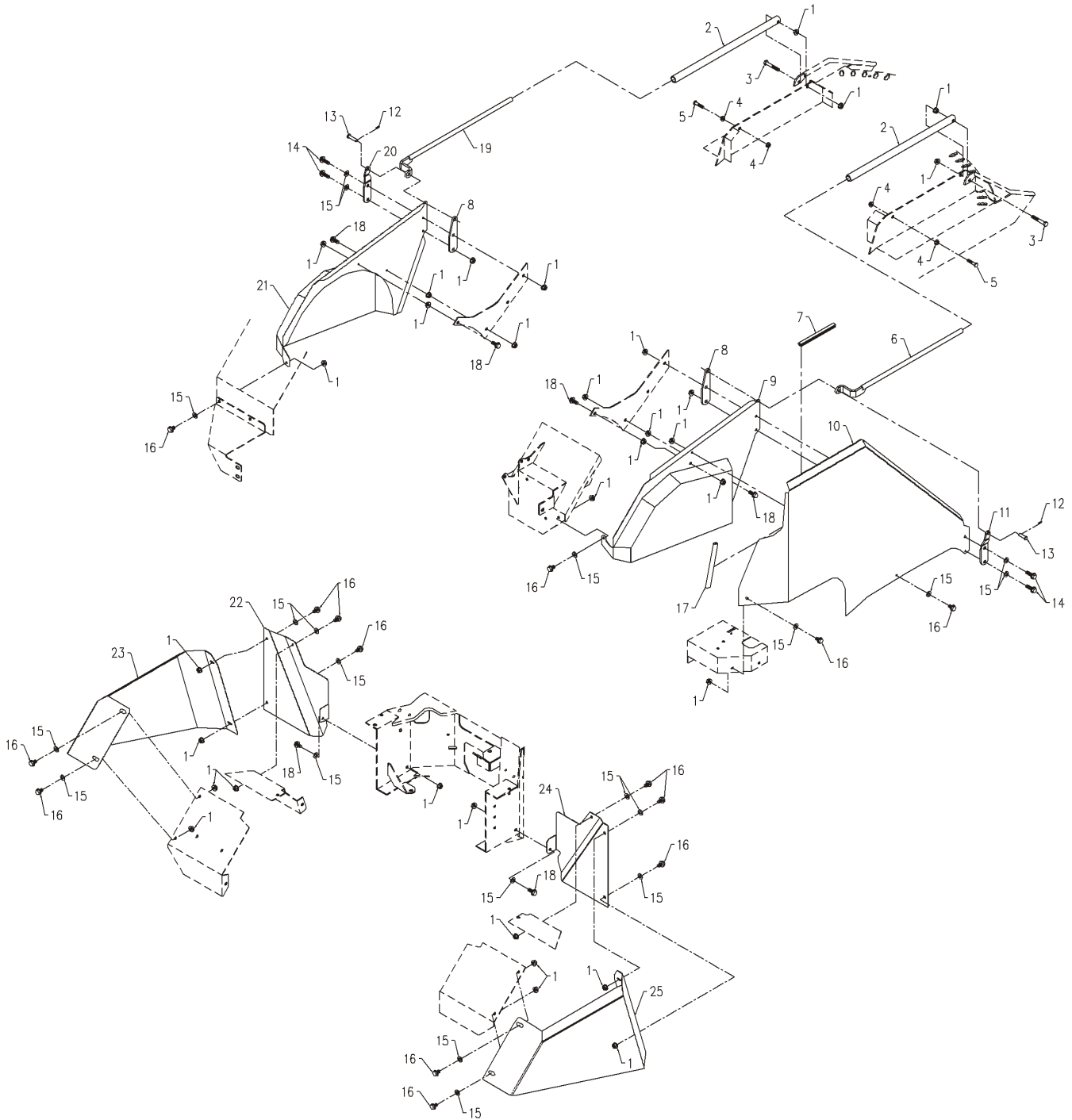
PARTS

OPTIONAL FENDERS & SHIELDS FOR LT3000

REF.	PART NO.	DESCRIPTION	QTY.
1	99.SF05	NUT, SF 5/16-18 USS	25
2	64.0912	STIFFENER, ANCHR OF SLIDER ROD	2
3	60.0763	COVER, FENDER FRONT LFT LQ450	1
4	99.E0060	NUT, JAM 5/16-18 USS	4
5	99.SF04	NUT, SF 1/4-20 USS	2
6	99.SF0506	BOLT, SF 5/16-18 USS X 3/4	20
7	60.0762	COVER, FENDER FRONT RT LQ450	1
8	60.0764	COVER, FENDER REAR RT LQ450	1
9	60.0765	COVER, FENDER REAR LFT LQ450	1
10	99.SF0404	BOLT, SF 1/4-20 X 1/2	2
11	60.0814	PROTECTOR, HAND CONTROL LQ	1
12	60.0802	BRACE, HAND CONTROL PROTECTOR	1
13	90.0516	BOLT, 5/16-18 USS X 2	4
14	95.05	WASHER, FLAT 5/16 SAE	6
15	64.0870	LIMB RAISER, LOWER LQ450	2
16	64.0871	LIMB RAISER, UPPER LQ450	2
17	06.0042-35IN	TRIM, TRIM LOC 1/2 X 1/16 X 35"	1
18	64.1080	BRACE, REAR TIRE SHIELD	2

PARTS

ILLUSTRATED DRAWING OPTIONAL FENDERS & SHIELDS FOR LE3100/3200



PARTS

OPTIONAL FENDERS & SHIELDS FOR LE3100/3200

REF.	PART NO.	DESCRIPTION	QTY.
1	99.SF05	NUT, SF 5/16-18 USS	31
2	64.0870	LIMB RAISER, LOWER LQ450	2
3	90.0516	BOLT, 5/16-18 USS X 2	2
4	99.SF04	NUT, SF 1/4-20 USS	4
5	90.0410	BOLT, 1/4-20 USS X 1 1/4	2
6	64.1337	ROD, RIGHT LIMB PICKUP	1
<hr/>			
7	06.0042-11.75IN	TRIM, TRIM LOC 1/2 X 1/16 X 11-3/4"	1
8	64.1334	PLATE, INSIDE LIMB ROD MT	2
9	60.0999	COVER, TIRE FRONT RIGHT	1
10	60.1005	SHIELD, RIGHT HAND PROTECTOR	1
11	64.1335	PLATE, OUTSIDE LIMB ROD MT RH	1
12	02.HP0313	HAIRPIN, 3/32 X 1-5/8	2
<hr/>			
13	03.0510	CLEVIS PIN, 5/16 X 1-1/4	2
14	99.SF0508	BOLT, SF 5/16-18 USS X 1	4
15	95.05	WASHER, FLAT 5/16 SAE	20
16	99.SF0504	BOLT, SF 5/16-18USS X 1/2	14
17	06.0042-8IN	TRIM, TRIM LOC 1/2 X 1/16 X 8"	1
18	99.SF0506	BOLT, SF 5/16-18 USS X 3/4	6
<hr/>			
19	64.1338	ROD, LEFT LIMB PICKUP	1
20	64.1336	PLATE, OUTSIDE LIMB ROD MT LH	1
21	60.1000	COVER, TIRE FRONT LEFT	1
22	60.1004	COVER, FRONT LH REAR TIRE	1
23	60.1002	COVER, TIRE REAR LEFT	1
24	60.1003	COVER, FRONT RH REAR TIRE	1
<hr/>			
25	60.1001	COVER, TIRE REAR RIGHT	1